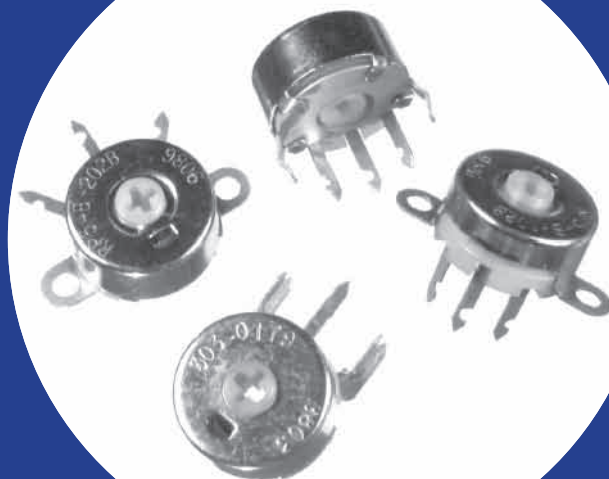


Industrial 19mm Diameter 2 Watt Wirewound Rotary Trimmer

Features

- Fully enclosed construction
- Four mounting styles
- Long rotational life
- Optional grounded or insulated rotor construction
- Incorporated fixed resistor available
- Available with nylon shaft
- RoHS compliant



Electrical and Mechanical Specifications

Resistance Range

1 ohm through 20K ohms (linear taper)

Resistance Tolerance

±20% , ±10% , ±5%

Power Rating, Watts

2 watts @ 55°C derated to no load @ 105°C,
mounted on steel panel
1.5 watts @ 55°C derated to no load @ 105°C,
mounted on bakelite panel

Voltage Rating

Terminals to case (insulated types only)
High pot test, one minute — 900 VAC
Operating maximum — 500 VDC
Across end terminals
Determined by resistance value and wattage rating

Resistance Taper

Standard: Linear taper

Incorporated Fixed Resistor

A fixed resistor can be incorporated in the Series 115
at the end of CW or CCW rotation to a minimum of 15%
of the total resistance value. The rotation is shortened
by an amount proportional to the ratio of the fixed resistor
to the total resistance value.

Rotational Angle

Total Rotation: 270° ± 5°

Rotational Torque

1/2 to 10 in-oz. (36 – 720 gf-cm)

Resistor Adjustment

Standard: Cross slot provided in rotor for screwdriver
adjustment.

Special: Molded nylon, screwdriver-slotted shafts which
are integral with rotor are available in many lengths
in increments of 1/8" (3.2mm) up to a maximum
of 2" (50.8mm) as required.

Mounting Types Available

Printed circuit mounted: Type 115 P
Twist tab mounted: Type 115 T
Snap-in mounted: Type 116 E
Rivet ear mounted: Type 117 R

Terminal Information

Grounded Construction — The grounded construction is
supplied without a center terminal and the contactor is
connected to the case. This construction can be furnished
with one end terminal at either end of the resistance
element or with terminals at both ends of the element.

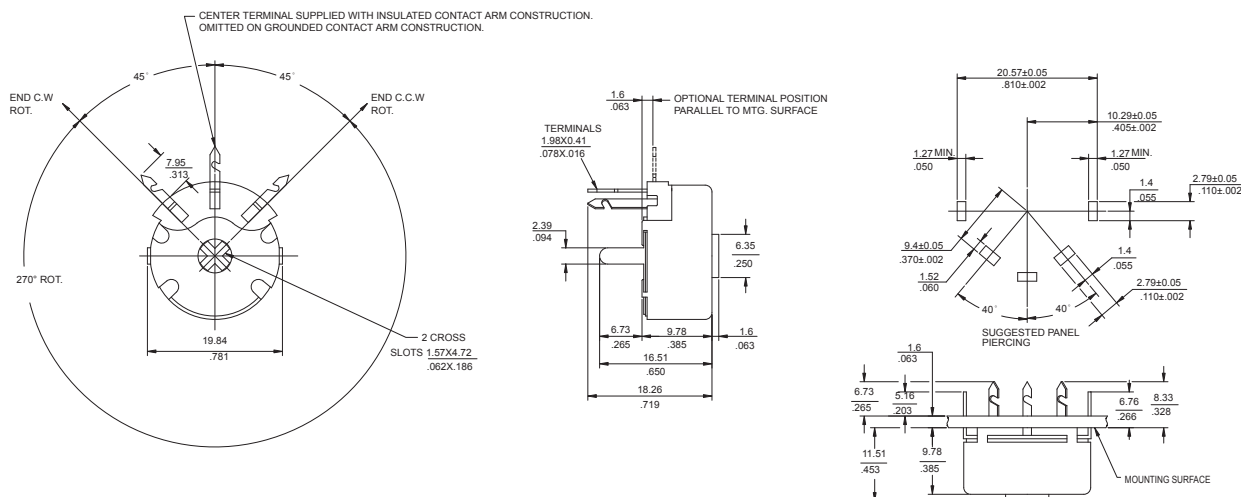
Insulated Construction — The contactor is insulated from the
base and connected to the center terminal on the insulated
construction. This construction can be supplied with the
center terminal and one end terminal at either end of the
resistance element or with the center terminal and terminals
at both ends of the resistance element.

Stop Strength

4 in-lb. (4.6 Kgf-cm)

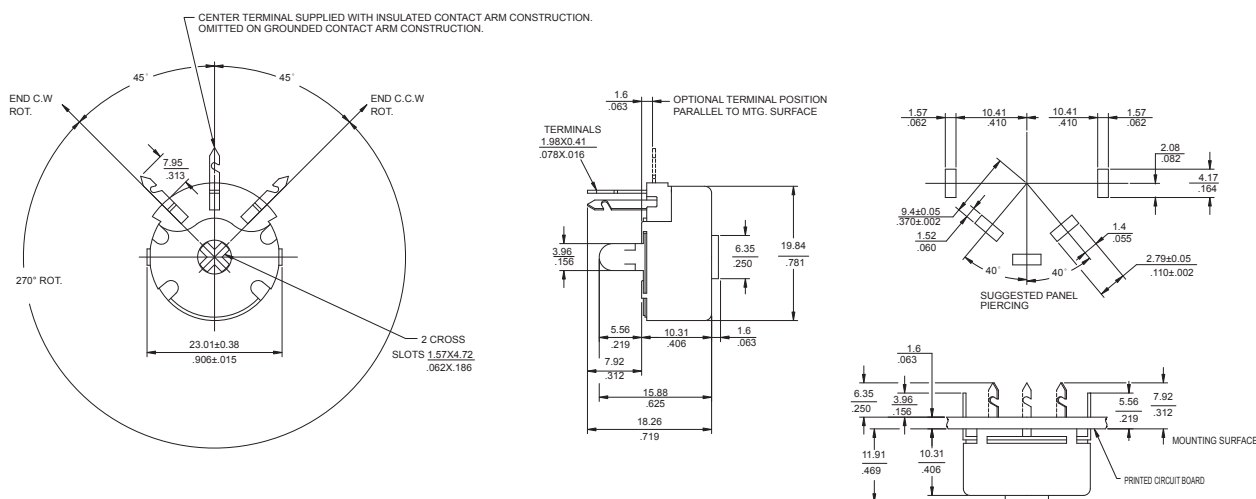
Type 115P, P.C. Mounted

DIMENSION: $\frac{\text{mm}}{\text{inch}}$



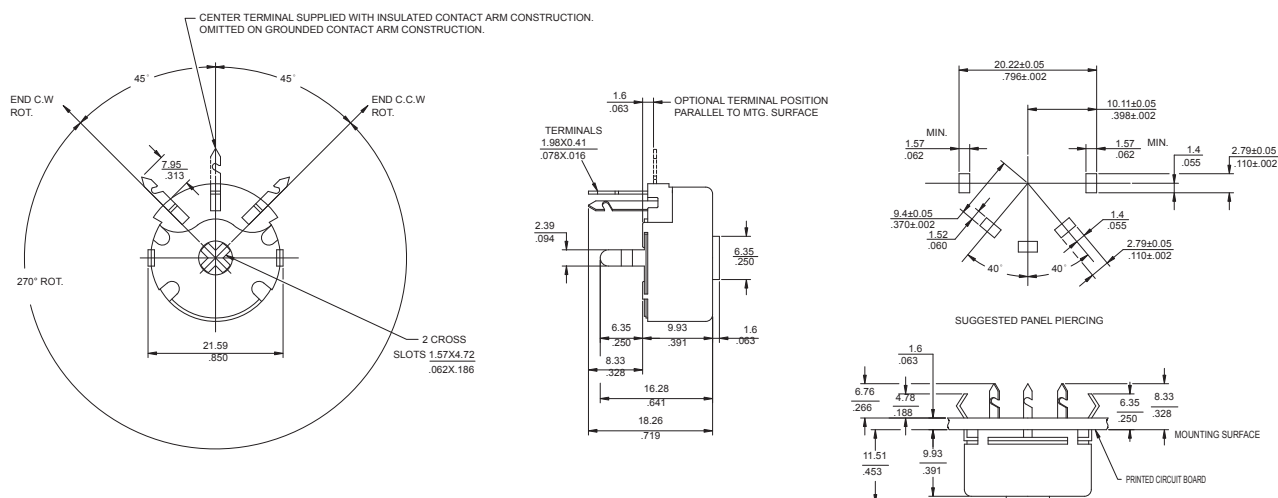
Type 115T, Twist Tab Mounted

DIMENSION: $\frac{\text{mm}}{\text{inch}}$



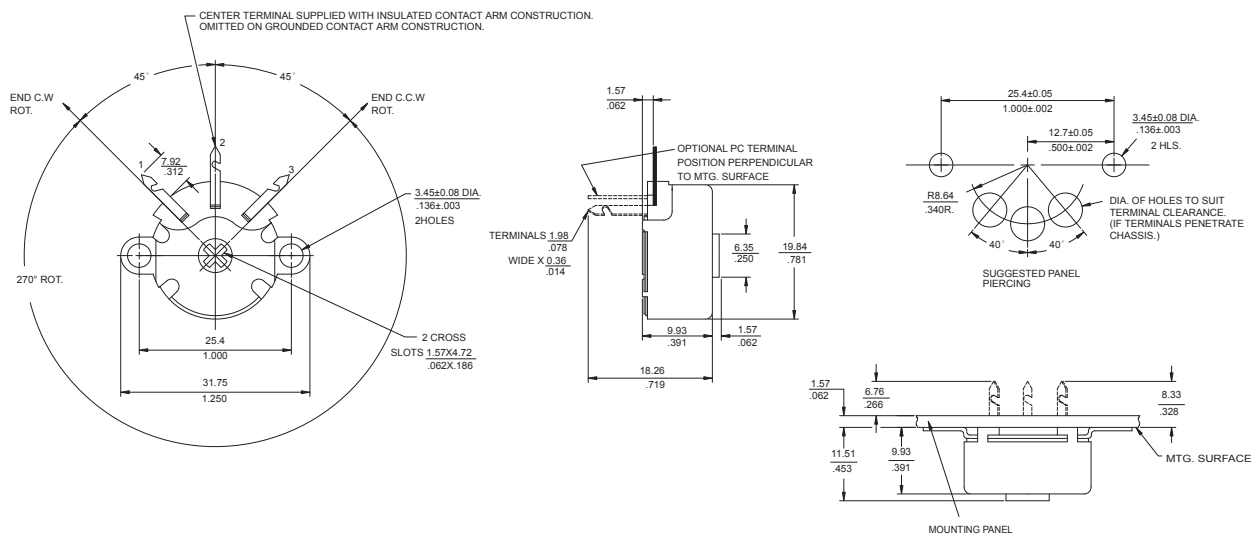
Type 116E, Snap-in Ear Mounted

DIMENSION: $\frac{\text{mm}}{\text{inch}}$



Type 117R, Rivet Ear Mounted

DIMENSION: $\frac{\text{mm}}{\text{inch}}$



Ordering Information

