

DS1631/DS3631/DS1632/DS3632/DS1633/DS3633/ DS1634/DS3634 CMOS Dual Peripheral Drivers

General Description

The DS1631 series of dual peripheral drivers was designed to be a universal set of interface components for CMOS circuits.

Each circuit has CMOS compatible inputs with thresholds that track as a function of V_{CC} (approximately $\frac{1}{2} V_{CC}$). The inputs are PNPs providing the high impedance necessary for interfacing with CMOS.

Outputs have high voltage capability, minimum breakdown voltage is 56V at 250 μA .

The outputs are Darlington connected transistors. This allows high current operation (300 mA max) at low internal V_{CC} current levels since base drive for the output transistor is obtained from the load in proportion to the required loading conditions. This is essential in order to minimize loading on the CMOS logic supply.

Typical $V_{CC} = 5V$ power is 28 mW with both outputs ON. V_{CC} operating range is 4.5V to 15V.

The circuit also features output transistor protection if the V_{CC} supply is lost by forcing the output into the high impedance OFF state with the same breakdown levels as when V_{CC} was applied.

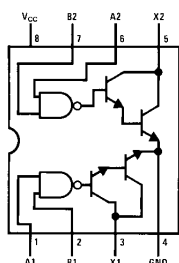
Pin-outs are the same as the respective logic functions found in the following popular series of circuits: DS75451, DS75461. This feature allows direct conversion of present systems to the MM74C CMOS family and DS1631 series circuits with great power savings.

The DS1631 series is also TTL compatible at $V_{CC} = 5V$.

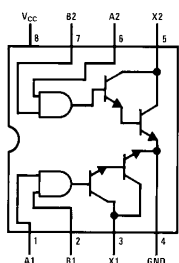
Features

- CMOS compatible inputs
- High impedance inputs
- High output voltage breakdown 56V min
- High output current capability 300 mA max
- Same pin-outs and logic functions as DS75451 and DS75461 series circuits
- Low V_{CC} power dissipation (28 mW both outputs "ON" at 5V)

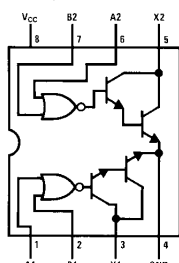
Connection Diagrams (Dual-In-Line and Metal Can Packages)



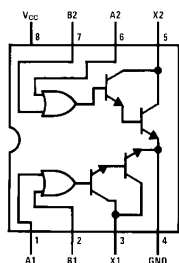
Top View
Order Number DS1631J-8
or DS3631N



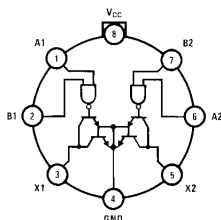
Top View
Order Number DS1632J-8
or DS3632N
See NS Package Number J08A or N08E



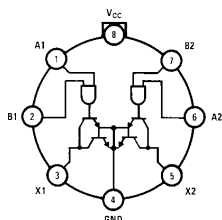
Top View
Order Number DS1633J-8
or DS3633N



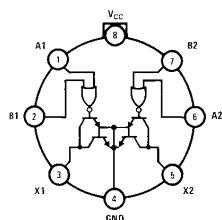
Top View
Order Number DS1634J-8
or DS3634N



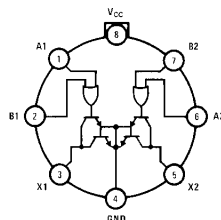
Top View
(Pin 4 is electrically connected to the case.)
Order Number DS1631H



Top View
(Pin 4 is electrically connected to the case.)
Order Number DS1632H



Top View
(Pin 4 is electrically connected to the case.)
Order Number DS1633H



Top View
(Pin 4 is electrically connected to the case.)
Order Number DS1634H

See NS Package Number H08C

DS1631/DS3631/DS1632/DS3632/DS1633/DS3633/DS1634/DS3634
CMOS Dual Peripheral Drivers

Absolute Maximum Ratings (Note 1)

If Military/Aerospace specified devices are required, please contact the National Semiconductor Sales Office/Distributors for availability and specifications.

Supply Voltage	16V
Voltage at Inputs	−0.3V to $V_{CC} + 0.3V$
Output Voltage	56V
Storage Temperature Range	−65°C to +150°C
Maximum Power Dissipation* at 25°C	
Cavity Package	1133 mW
Molded Package	1022 mW
TO-5 Package	787 mW
Lead Temperature (Soldering, 4 sec.)	260°C

*Derate cavity package 7.6 mW/°C above 25°C; derate molded package 8.2 mW/°C above 25°C; derate TO-5 package 5.2 mW/°C above 25°C.

Operating Conditions

	Min	Max	Units
Supply Voltage, V_{CC}			
DS1631/DS1632/ DS1633/DS1634	4.5	15	V
DS3631/DS3632/ DS3633/DS3634	4.75	15	V
Temperature, T_A			
DS1631/DS1632/ DS1633/DS1634	−55	+125	°C
DS3631/DS3632/ DS3633/DS3634	0	+70	°C

Electrical Characteristics (Notes 2 and 3)

Symbol	Parameter	Conditions		Min	Typ	Max	Units	
ALL CIRCUITS								
V _{IH}	Logical “1” Input Voltage	(Figure 1)	V _{CC} = 5V	3.5	2.5		V	
			V _{CC} = 10V	8.0	5		V	
			V _{CC} = 15V	12.5	7.5		V	
V _{IL}	Logical “0” Input Voltage	(Figure 1)	V _{CC} = 5V		2.5	1.5	V	
			V _{CC} = 10V		5.5	2.0	V	
			V _{CC} = 15V		7.5	2.5	V	
I _{IH}	Logical “1” Input Current	V _{CC} = 15V, V _{IN} = 15V, (Figure 2)			0.1	10	μA	
I _{IL}	Logical “0” Input Current	V _{IN} = 0.4V, (Figure 3)	V _{CC} = 5V		−50	−120	μA	
			V _{CC} = 15V		−200	−360	μA	
V _{OH}	Output Breakdown Voltage	V _{CC} = 15V, I _{OH} = 250 μA, (Figure 1)		56	65		V	
V _{OL}	Output Low Voltage	V _{CC} = Min, (Figure 1), DS1631, DS1632, DS1633, DS1634	I _{OL} = 100 mA		0.85	1.1	V	
			I _{OL} = 300 mA		1.1	1.4	V	
		V _{CC} = Min, (Figure 1), DS3631, DS3632, DS3633, DS3634	I _{OL} = 100 mA		0.85	1.0	V	
			I _{OL} = 300 mA		1.1	1.3	V	
DS1631/DS3631								
I _{CC(0)}	Supply Currents	V _{IN} = 0V, (Figure 4)	V _{CC} = 5V	Output Low		7	11	mA
			V _{CC} = 15V					
I _{CC(1)}		(Figure 4)	V _{CC} = 5V, V _{IN} = 5V	Output High		2	3	mA
			V _{CC} = 15V, V _{IN} = 15V					
t _{PD1}	Propagation to “1”	V _{CC} = 5V, T _A = 25°C, C _L = 15 pF, R _L = 50Ω, V _L = 10V, (Figure 5)				500		ns
t _{PD0}	Propagation to “0”	V _{CC} = 5V, T _A = 25°C, C _L = 15 pF, R _L = 50Ω, V _L = 10V, (Figure 5)				750		ns
DS1632/DS3632								
I _{CC(0)}	Supply Currents	(Figure 4)	V _{CC} = 5V, V _{IN} = 5V	Output Low		8	12	mA
			V _{CC} = 15V, V _{IN} = 15V					
I _{CC(1)}		V _{IN} = 0V, (Figure 4)	V _{CC} = 5V	Output High		2.5	3.5	mA
			V _{CC} = 15V					
t _{PD1}	Propagation to “1”	V _{CC} = 5V, T _A = 25°C, C _L = 15 pF, R _L = 50Ω, V _L = 10V, (Figure 5)				500		ns
t _{PD0}	Propagation to “0”	V _{CC} = 5V, T _A = 25°C, C _L = 15 pF, R _L = 50Ω, V _L = 10V, (Figure 5)				750		ns

Electrical Characteristics (Notes 2 and 3) (Continued)

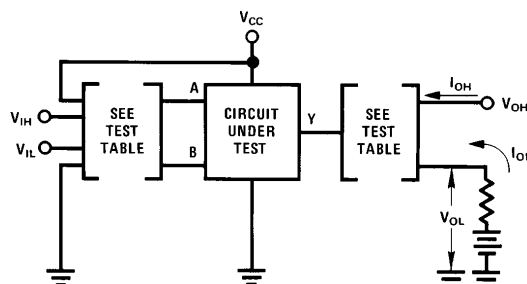
Symbol	Parameter	Conditions			Min	Typ	Max	Units
DS1633/DS3633								
I _{CC(0)}	Supply Currents	V _{IN} = 0V, (Figure 4)	V _{CC} = 5V	Output Low		7.5	12	mA
			V _{CC} = 15V			16	23	
I _{CC(1)}		(Figure 4)	V _{CC} = 5V, V _{IN} = 5V	Output High		2	4	mA
			V _{CC} = 15V, V _{IN} = 15V			7.2	15	
t _{PD1}	Propagation to “1”	V _{CC} = 5V, T _A = 25°C, C _L = 15 pF, R _L = 50Ω, V _L = 10V, (Figure 5)				500		ns
t _{PD0}	Propagation to “0”	V _{CC} = 5V, T _A = 25°C, C _L = 15 pF, R _L = 50Ω, V _L = 10V, (Figure 5)				750		ns
DS1634/DS3634								
I _{CC(0)}	Supply Currents	(Figure 4)	V _{CC} = 5V, V _{IN} = 5V	Output Low		7.5	12	mA
			V _{CC} = 15V, V _{IN} = 15V			18	23	
I _{CC(1)}		V _{IN} = 0V, (Figure 4)	V _{CC} = 5V	Output High		3	5	mA
			V _{CC} = 15V			11	18	
t _{PD1}	Propagation to “1”	V _{CC} = 5V, T _A = 25°C, C _L = 15 pF, R _L = 50Ω, V _L = 10V, (Figure 5)				500		ns
t _{PD0}	Propagation to “0”	V _{CC} = 5V, T _A = 25°C, C _L = 15 pF, R _L = 50Ω, V _L = 10V, (Figure 5)				750		ns

Note 1: "Absolute Maximum Ratings" are those values beyond which the safety of the device cannot be guaranteed. Except for "Operating Temperature Range" they are not meant to imply that the devices should be operated at these limits. The table of "Electrical Characteristics" provides conditions for actual device operation.

Note 2: Unless otherwise specified min/max limits apply across the $-55^\circ C$ to $+125^\circ C$ temperature range for the DS1631, DS1632, DS1633 and DS1634 and across the $0^\circ C$ to $+70^\circ C$ range for the DS3631, DS3632, DS3633 and DS3634. All typical values are for $T_A = 25^\circ C$.

Note 3: All currents into device pins shown as positive, out of device pins as negative, all voltages referenced to ground unless otherwise noted. All values shown as max or min on absolute value basis.

Test Circuits

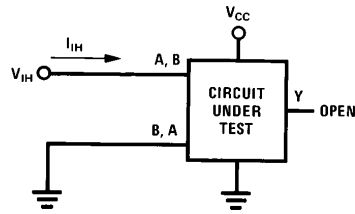


Circuit	Input Under Test	Other Input	Output	
			Apply	Measure
DS3631	V_{IH}	V_{IH}	I_{OH}	V_{OH}
	V_{IL}	V_{CC}	I_{OL}	V_{OL}
DS3632	V_{IH}	V_{IH}	I_{OL}	V_{OL}
	V_{IL}	V_{CC}	I_{OH}	V_{OH}
DS3633	V_{IH}	GND	I_{OH}	V_{OH}
	V_{IL}	V_{IL}	I_{OL}	V_{OL}
DS3634	V_{IH}	GND	I_{OL}	V_{OL}
	V_{IL}	V_{IL}	I_{OH}	V_{OH}

Note: Each input is tested separately.

FIGURE 1. V_{IH} , V_{IL} , V_{OH} , V_{OL}

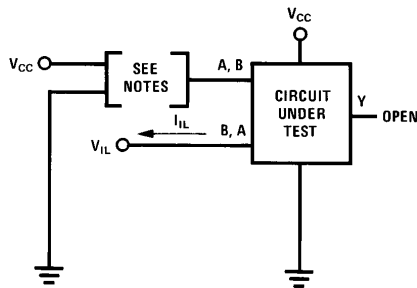
Test Circuits (Continued)



Each input is tested separately.

TL/F/5816-10

FIGURE 2. I_{IH}

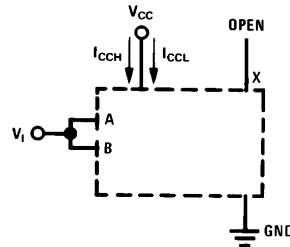


TL/F/5816-11

Note A: Each input is tested separately.

Note B: When testing DS1633 and DS1634 input not under test is grounded. For all other circuits it is at V_{CC} .

FIGURE 3. I_{IL}

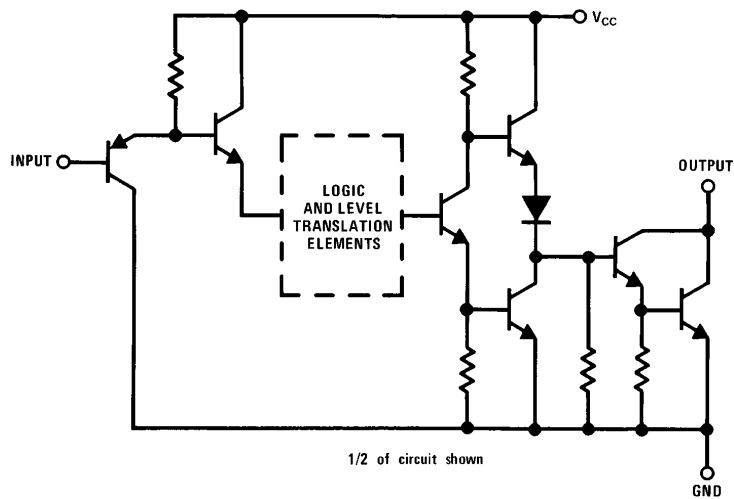


TL/F/5816-12

Both gates are tested simultaneously.

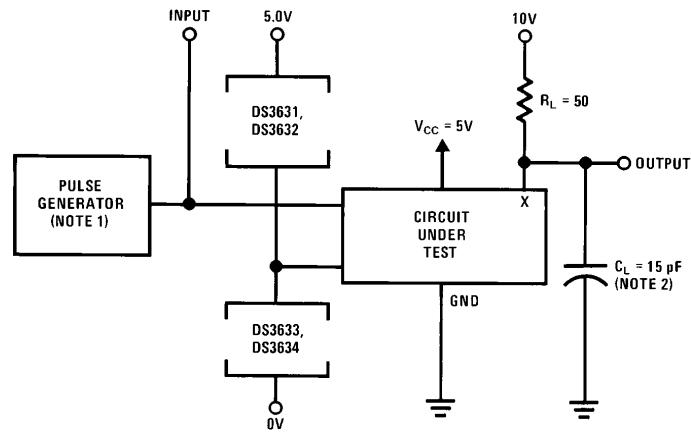
FIGURE 4. I_{CC} for AND and NAND Circuits

Schematic Diagram (Equivalent Circuit)

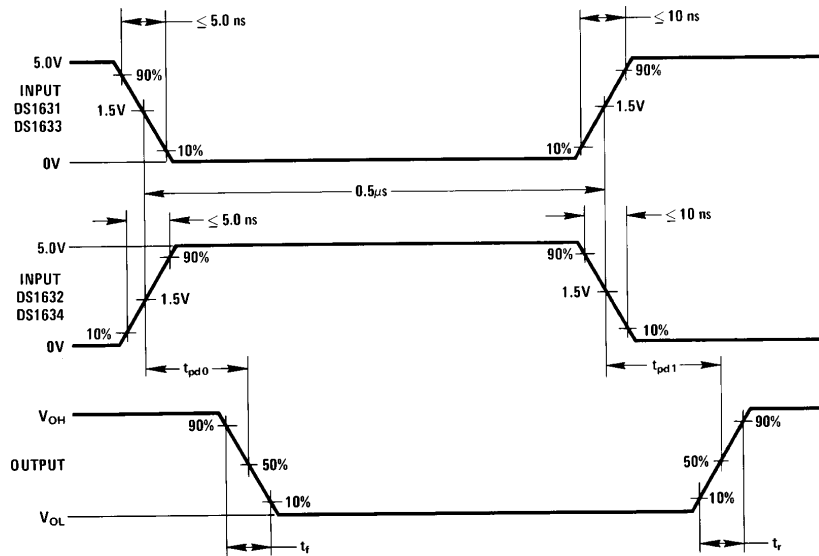


TL/F/5816-15

Switching Time Waveforms



TL/F/5816-13



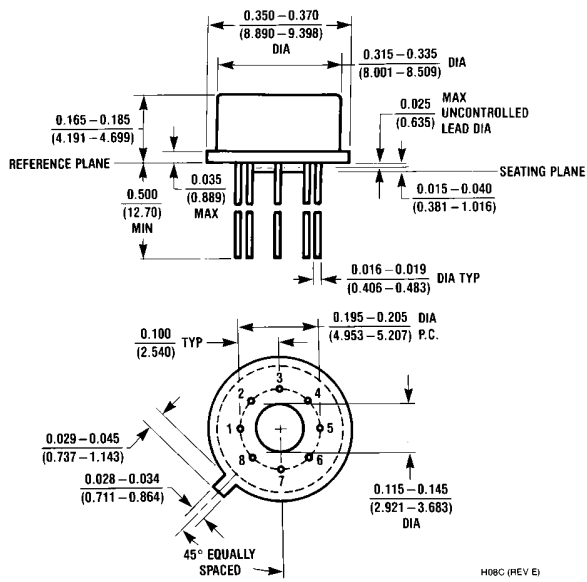
TL/F/5816-14

Note 1: The pulse generator has the following characteristics: PRR = 500 kHz, $Z_{OUT} \approx 50\Omega$

Note 2: C_L includes probe and jig capacitance

FIGURE 5. Switching Times

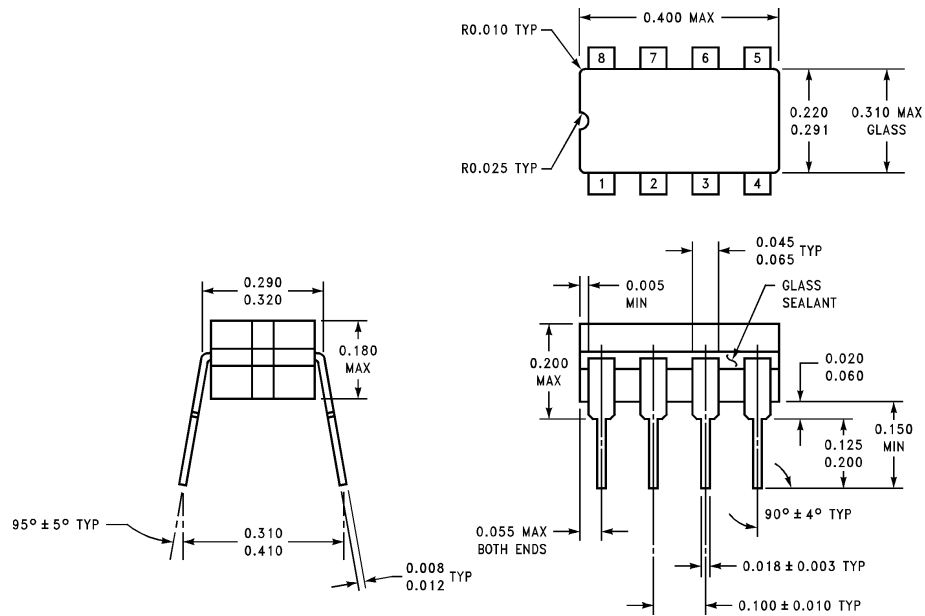
Physical Dimensions inches (millimeters)



H08C (REV E)

Metal Can Package (H)
Order Number DS1631H, DS1632H, DS1633H or DS1634H
NS Package Number H08C

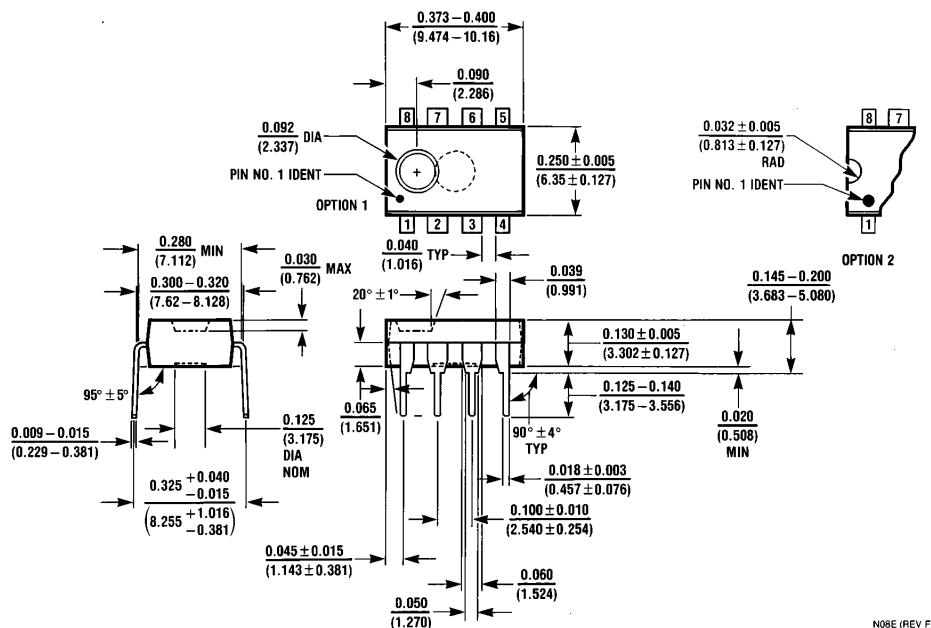
Physical Dimensions inches (millimeters) (Continued)



Ceramic Dual-In-Line Package (J)
Order Number DS1631J-8, DS1632J-8, DS1633J-8 or DS1634J-8
NS Package Number J08A

J08A (REV K)

Physical Dimensions inches (millimeters) (Continued)



Molded Dual-In-Line Package (N)
Order Number DS3631N, DS3632N,
DS3633N and DS3634N
NS Package Number N08E

N08E (REV F)

LIFE SUPPORT POLICY

NATIONAL'S PRODUCTS ARE NOT AUTHORIZED FOR USE AS CRITICAL COMPONENTS IN LIFE SUPPORT DEVICES OR SYSTEMS WITHOUT THE EXPRESS WRITTEN APPROVAL OF THE PRESIDENT OF NATIONAL SEMICONDUCTOR CORPORATION. As used herein:

1. Life support devices or systems are devices or systems which, (a) are intended for surgical implant into the body, or (b) support or sustain life, and whose failure to perform, when properly used in accordance with instructions for use provided in the labeling, can be reasonably expected to result in a significant injury to the user.
2. A critical component is any component of a life support device or system whose failure to perform can be reasonably expected to cause the failure of the life support device or system, or to affect its safety or effectiveness.



National Semiconductor Corporation
1111 West Bardin Road
Arlington, TX 76017
Tel: 1(800) 272-9959
Fax: 1(800) 737-7018

National Semiconductor Europe
Fax: (+49) 0-180-530 85 86
Email: onjwge@tevm2.nsc.com
Deutsch Tel: (+49) 0-180-530 85 85
English Tel: (+49) 0-180-532 78 32
Français Tel: (+49) 0-180-532 93 58
Italiano Tel: (+49) 0-180-534 16 80

National Semiconductor Hong Kong Ltd.
19th Floor, Straight Block,
Ocean Centre, 5 Canton Rd.
Tsimshatsui, Kowloon
Hong Kong
Tel: (852) 2737-1600
Fax: (852) 2736-9960

National Semiconductor Japan Ltd.
Tel: 81-043-299-2309
Fax: 81-043-299-2408

National does not assume any responsibility for use of any circuitry described, no circuit patent licenses are implied and National reserves the right at any time without notice to change said circuitry and specifications.