

SURFACE MOUNT SWITCHING DIODE

This device is an extremely fast switching diode housed in the ultra-small SOD-523 package. Ideal for applications where board space is at a

FEATURES

- Extremely fast reverse recovery time to reduce switching losses
- Very low capacitance for reduced insertion losses
- Reverse voltage rating of 80V
- Also available in lead-free plating (100% matte tin finish)

APPLICATIONS

- Mobile phones and accessories
- Hand-held computers
- High Speed Switching Applications



Marking Code: 14

MAXIMUM RATINGS $T_J = 25^{\circ}\text{C}$ Unless otherwise noted

Rating	Symbol	Value	Units
Peak Reverse Voltage	V_{RM}	90	V
Continuous Reverse Voltage	V_R	80	V
Continuous Forward Current	I_F	225	mA
Non-repetitive Peak Forward Current, $t = 1\text{sec}$, Square Wave	I_{FSM}	500	mA
Total Power Dissipation (Note 1)	P_{tot}	200	mW
Operating Junction Temperature Range	T_J	-55 to +150	$^{\circ}\text{C}$
Storage Temperature Range	T_{stg}	-55 to +150	$^{\circ}\text{C}$

Note 1. FR-5 Board 1.0 x 0.75 x 0.062 in.

THERMAL CHARACTERISTICS

Characteristic	Symbol	Value	Units
Thermal Resistance, Junction to Ambient	R_{thja}	625	$^{\circ}\text{C/W}$

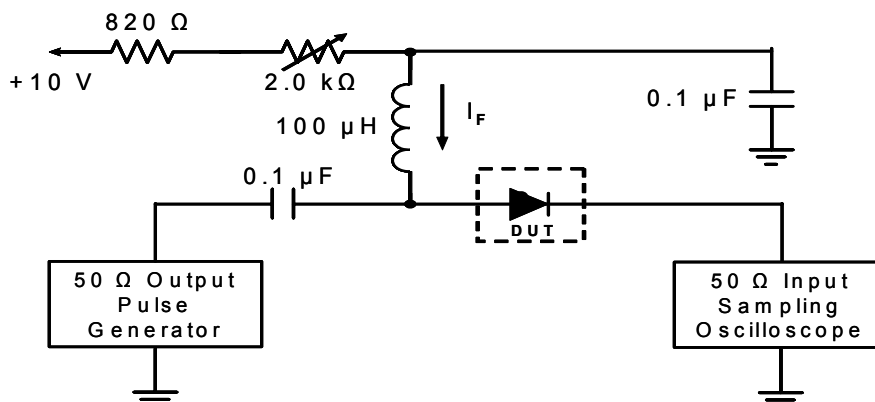


ELECTRICAL CHARACTERISTICS

T_j = 25°C Unless otherwise noted

Parameter	Symbol	Conditions	Min	Typ	Max	Units
Forward Voltage (Note 2)	V _F	I _F = 100mA	-	-	1.2	V
Reverse Leakage Current	I _R	V _R = 80V	-	-	0.1	uA
Junction Capacitance	C _D	0.5Vdc Bias, f = 1 MHz	-	0.7	2.0	pF
Reverse Recovery Time (See Figure 1)	t _{rr}	I _F = 10mA, I _R = 10mA R _L = 100 Ohms; measured at I _{Rrec} = 1mA	-	-	4.0	ns

Note 2. Short duration pulse test to avoid self-heating effect

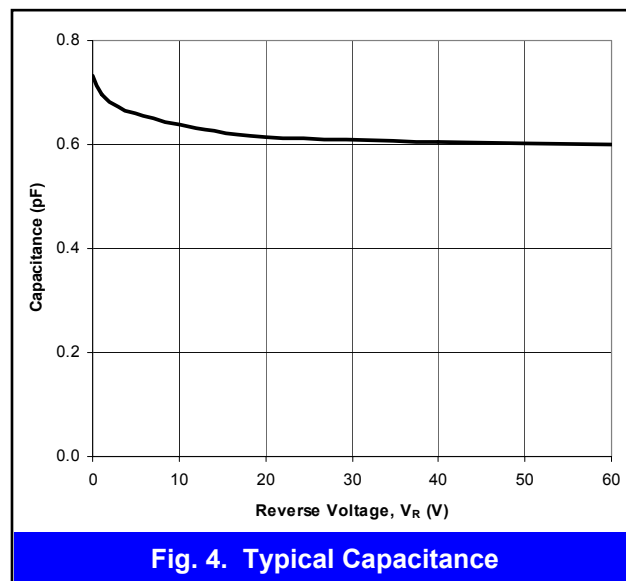
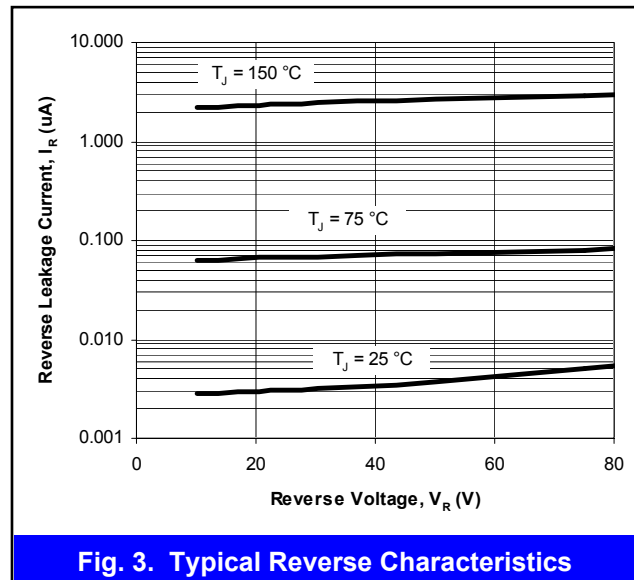
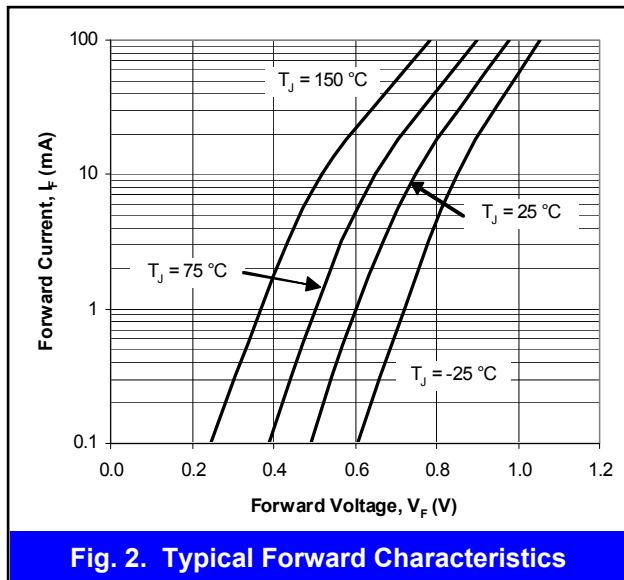


- Notes: 1. A 2.0kΩ variable resistor adjusted for a forward current (I_F) to 10mA
2. Input pulse is adjusted to I_{R(peak)} is equal to 10mA

Figure 1. REVERSE RECOVERY TIME EQUIVALENT TEST CIRCUIT

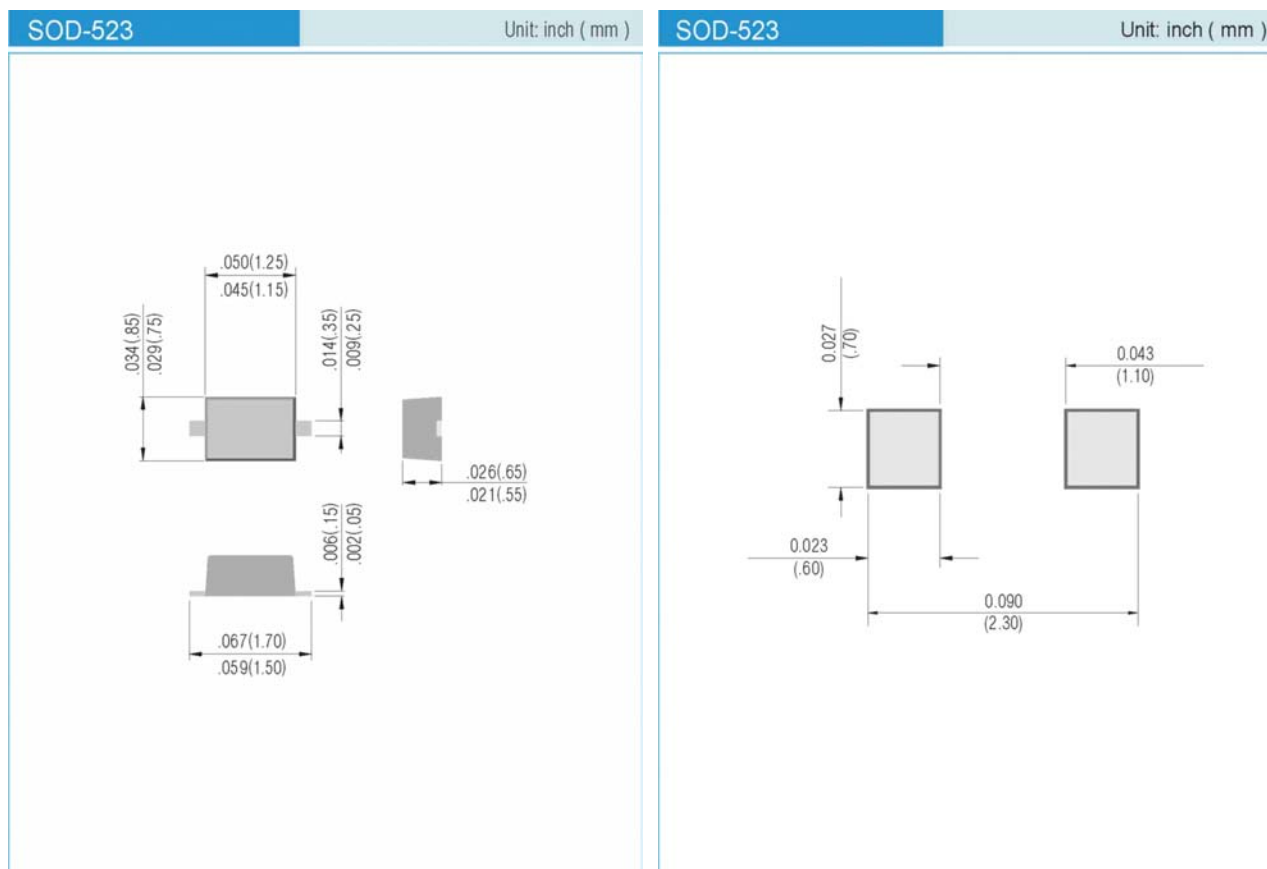


TYPICAL CHARACTERISTIC CURVES





PACKAGE LAYOUT AND SUGGESTED PAD DIMENSIONS



ORDERING INFORMATION

1SS400 T/R7 - 7" reel, 3K units per reel

1SS400 T/R13 - 13" reel, 10K units per reel

Copyright PanJit International, Inc 2005

The information presented in this document is believed to be accurate and reliable. The specifications and information herein are subject to change without notice. Pan Jit makes no warranty, representation or guarantee regarding the suitability of its products for any particular purpose. Pan Jit products are not authorized for use in life support devices or systems. Pan Jit does not convey any license under its patent rights or rights of others.