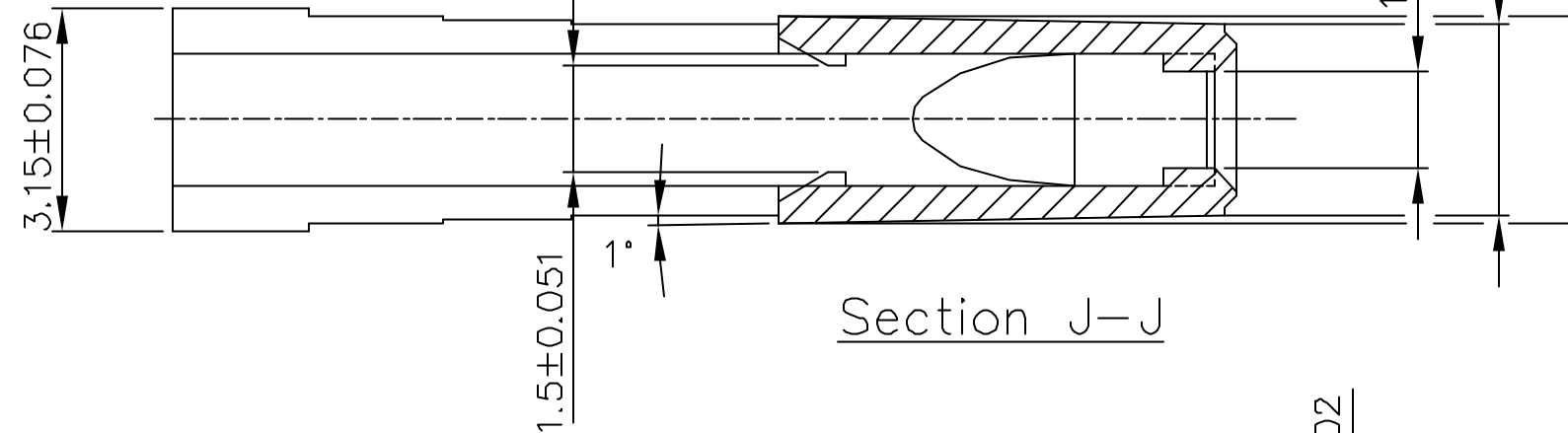
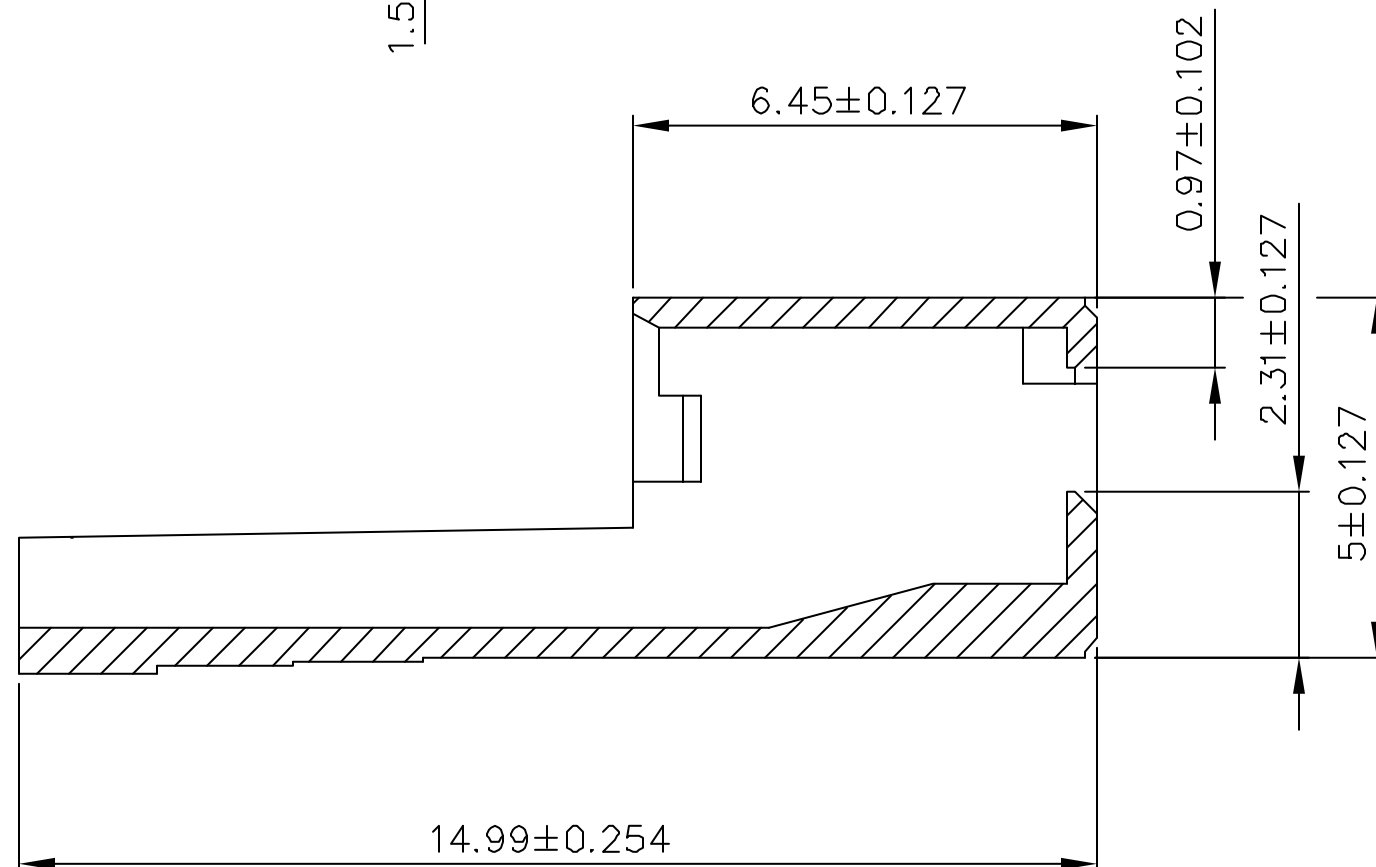
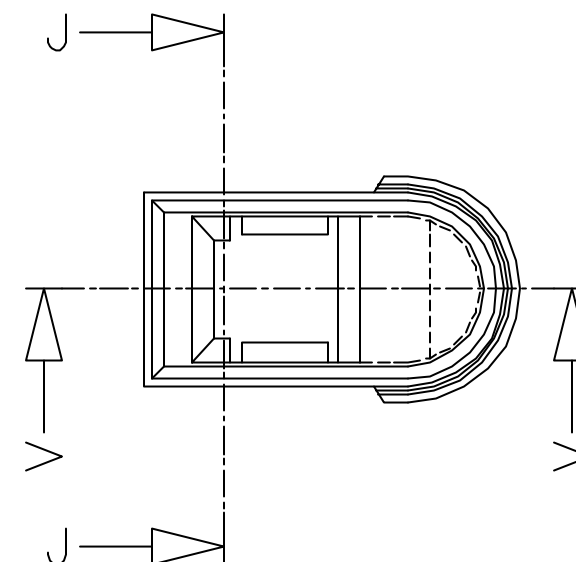


Product number  
65076-001(LF)

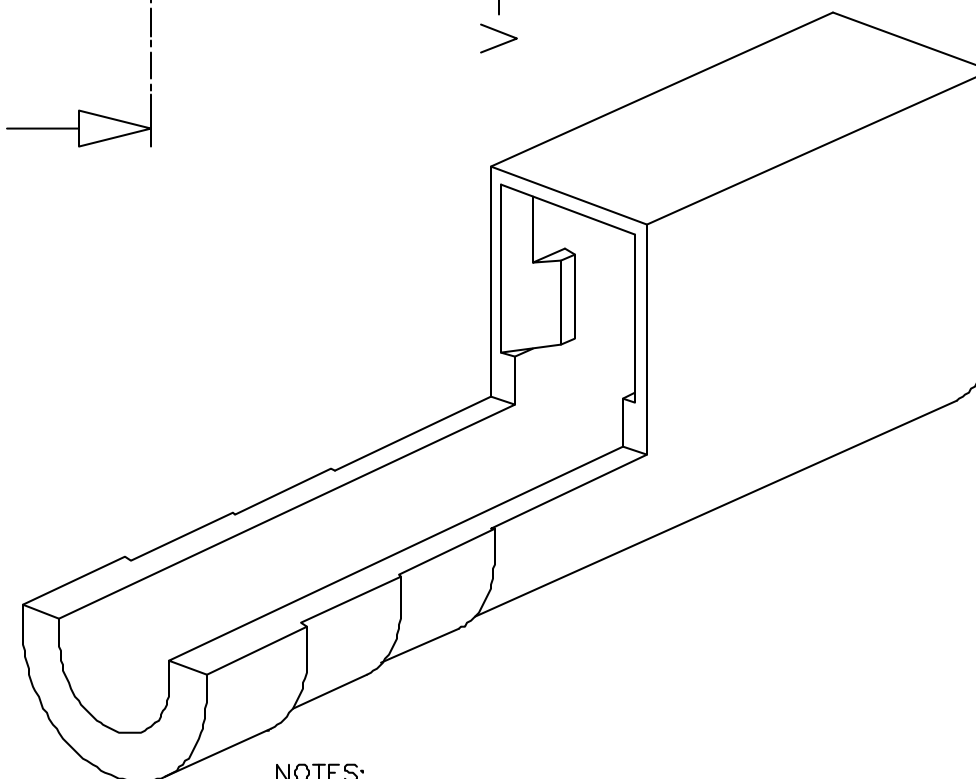
WHEN NEEDED, SUFFIX LETTER "LF"  
INDICATES THE PRODUCT IS RoHS  
COMPLIANT, SEE NOTES



Section J-J



Section V-V



NOTES:

MATERIAL : POLYPHENYLENE OXYDE, COLOUR : BLACK.  
RoHS COMPATIBLE PRODUCT SPECIFICATIONS

a - LABELING:

- MEETS PACKAGING SPECS AS PER GS-14-920

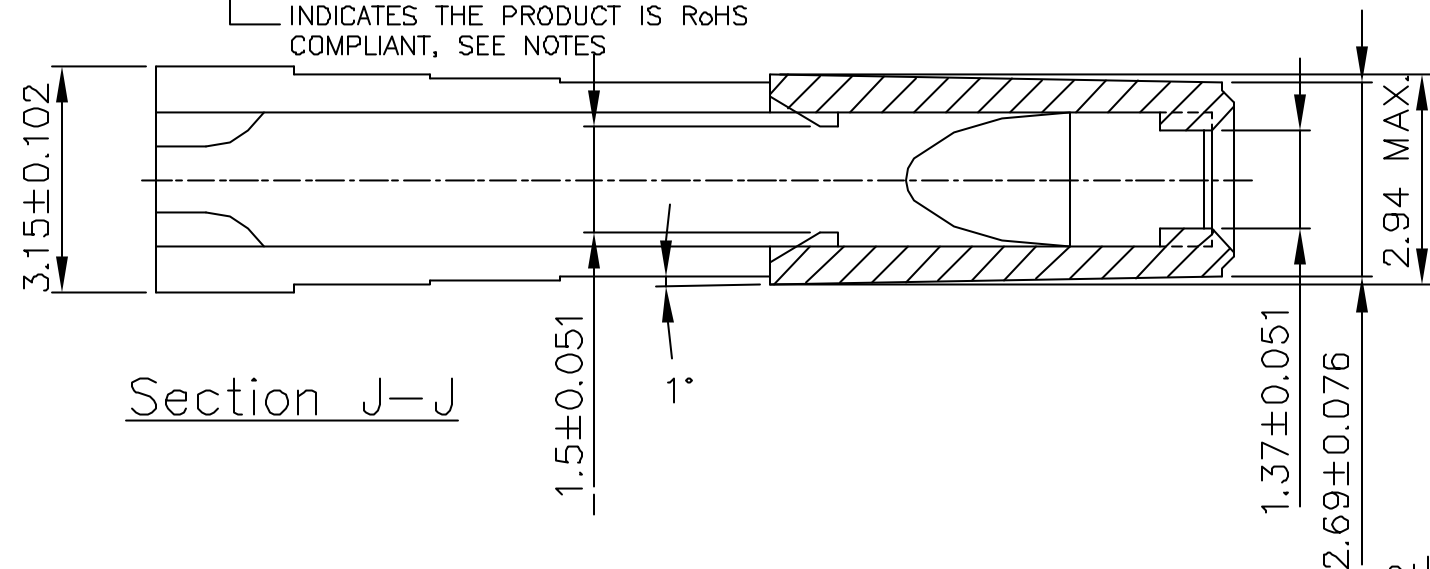
b - LEGAL STATEMENT: SEE GS-22-008

THE PRODUCT IS NOT INTENDED TO BE EXPOSED TO A  
MANUFACTURING SOLDER PROCESS.

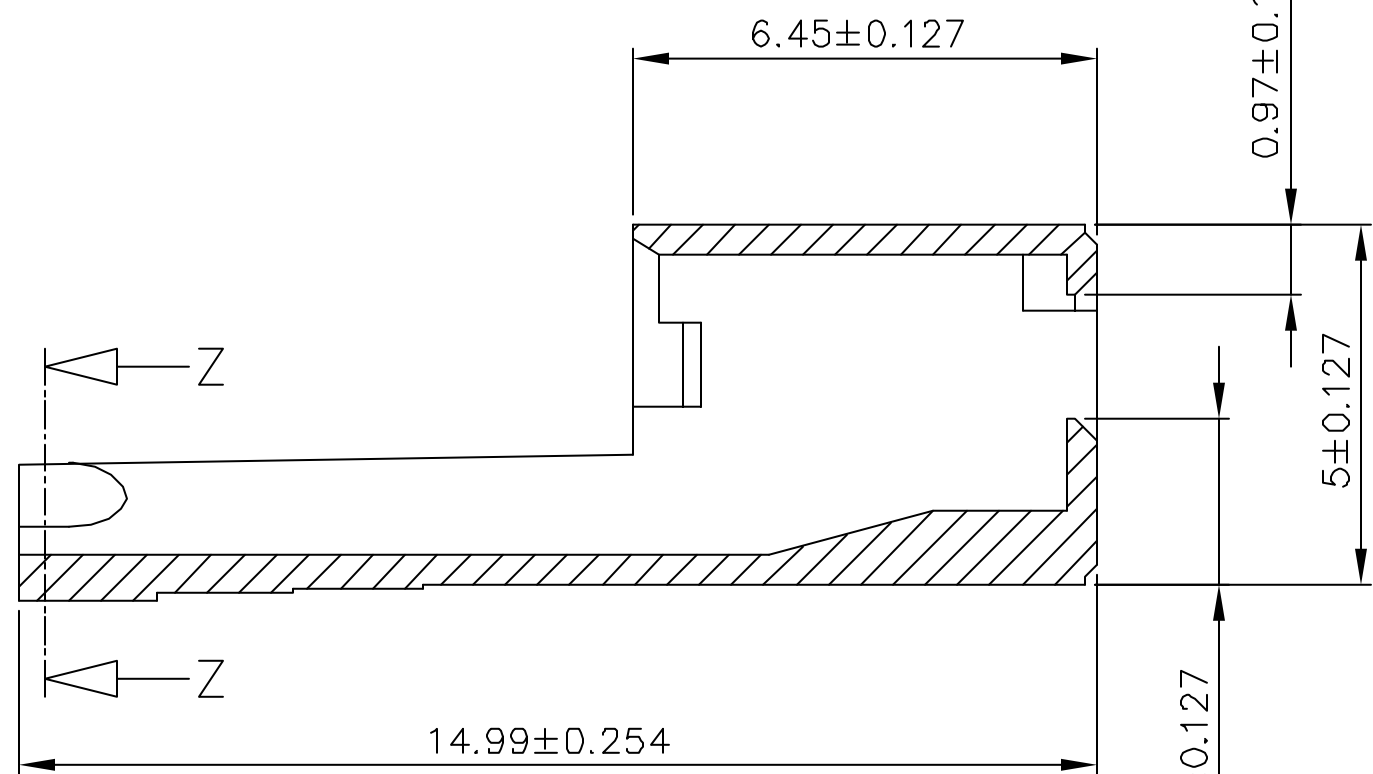
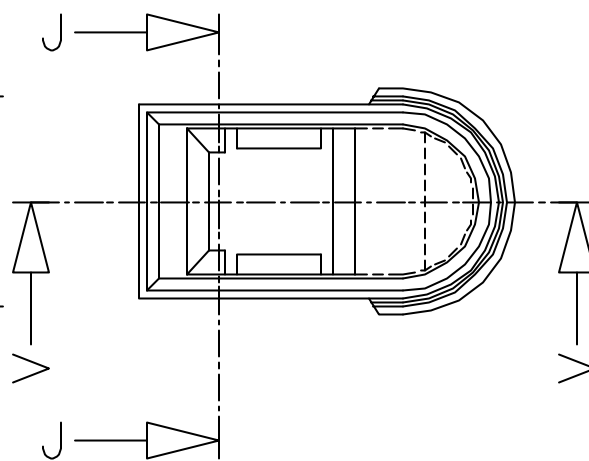
mat'l. code SEE NOTE 1.				surface ISO 1302 ✓	tolerance ISO 406 ISO 101	projection 101	product family			
ltr	ecn no	dr	date	tolerances unless otherwise specified		mm	title JUMBO P.V. HOUSING			
D	H30301	JvZ	930420	angles	linear					
E	F00405	VIB	000515			scale 10:1	dwg no 65076			
F	05-0235	DLE	05.08.24							
G	05-0286	DLE	05.11.07	dr	J.v.Zelst	930420	sheet 1 of 3			
H	06-0218	DLE	06.07.11	engr						
				chr	M.Loman	930420	size A3			
				appd						
sheet index	revision sheet	H 1	H 2	E 3			type Product Customer Drawing			

Product number  
65076-002LF

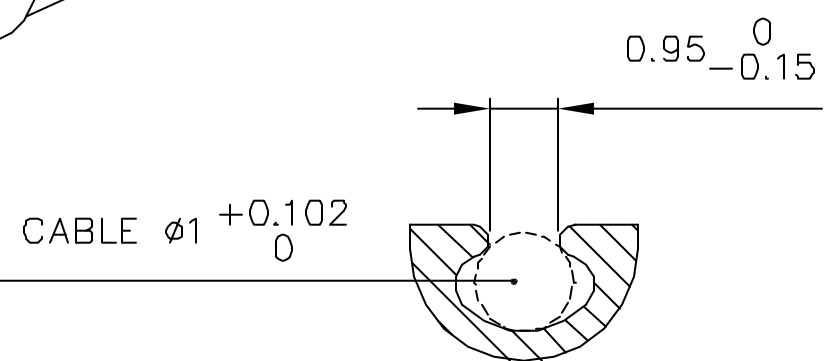
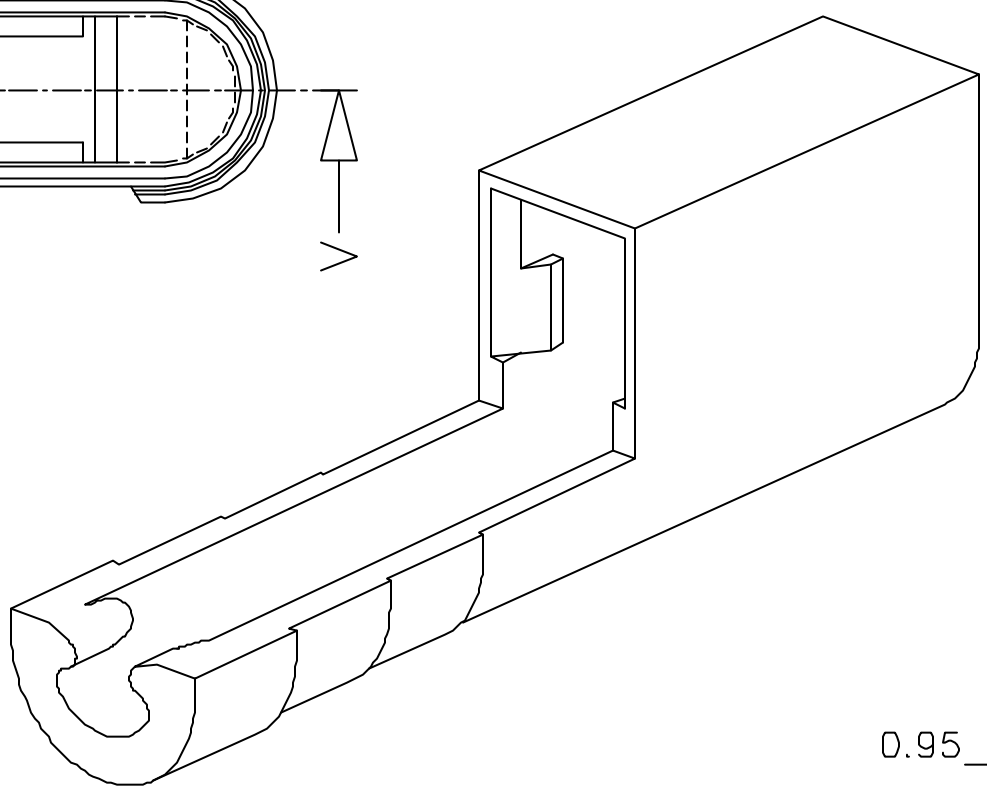
WHEN NEEDED, SUFFIX LETTER "LF"  
INDICATES THE PRODUCT IS RoHS  
COMPLIANT, SEE NOTES



Section J-J



Section V-V



Section Z-Z

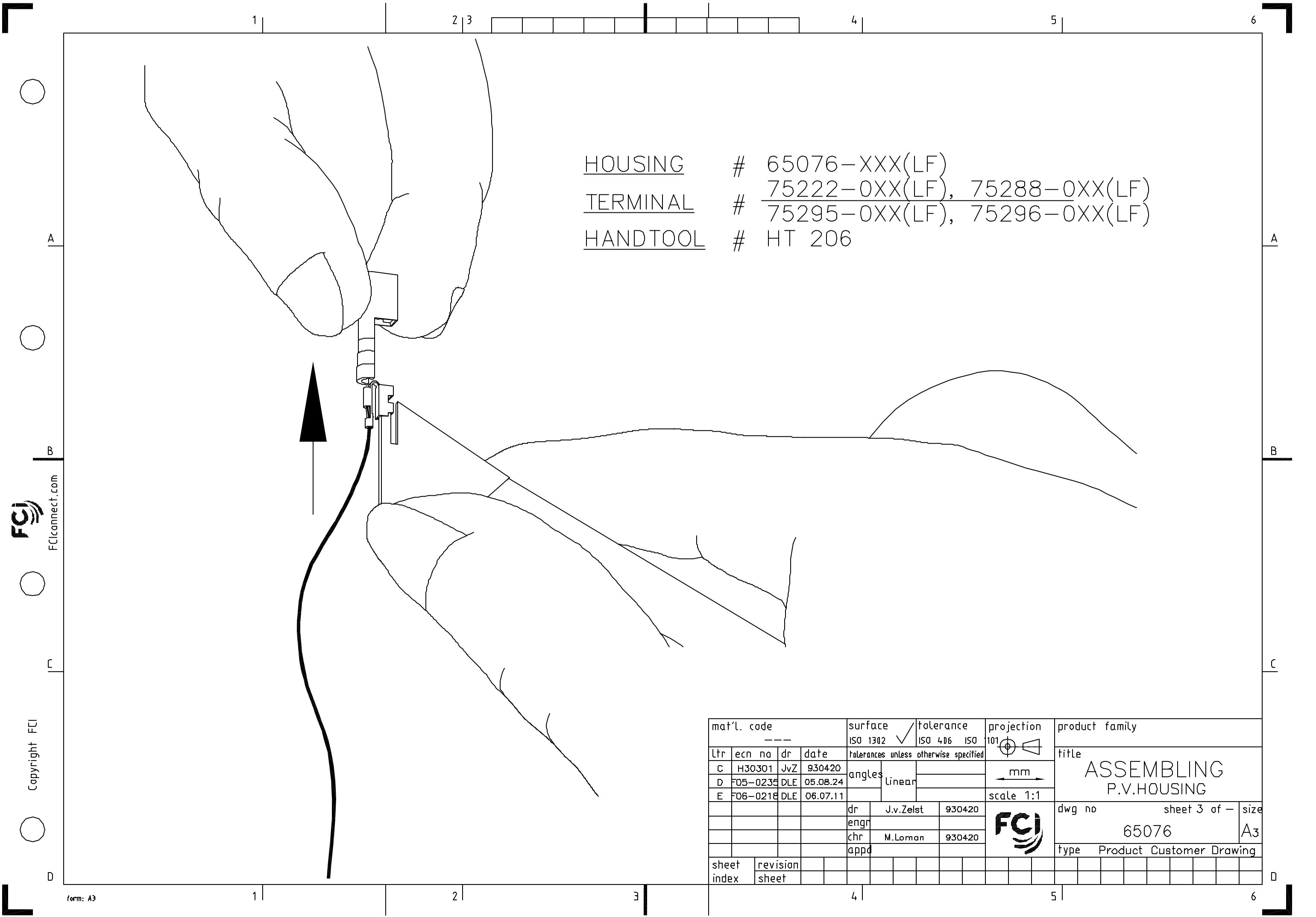
NOTES:

MATERIAL : POLYPHENYLENE OXYDE, COLOUR : BLACK.  
RoHS COMPATIBLE PRODUCT SPECIFICATIONS

- a - LABELING:
  - MEETS PACKAGING SPECS AS PER GS-14-920
- b - LEGAL STATEMENT: SEE GS-22-008

THE PRODUCT IS NOT INTENDED TO BE EXPOSED TO A  
MANUFACTURING SOLDER PROCESS.




mat'l. code SEE NOTE 1.				surface ISO 1302 ✓	tolerance ISO 406 ISO 101	projection 101	product family			
Ltr	ecn na	dr	date	tolerances unless otherwise specified		mm	title JUMBO P.V. HOUSING			
E	H30301	JvZ	930420	angles	linear					
F	F05-0235	DLE	05.08.24			scale 10:1	dwg na 65076			
G	F05-0286	DLE	05.11.07							
H	F06-0218	DLE	06.07.11	dr	J.v.Zelst	930420	sheet 2 of - size A3			
				engr	M.Loman	930420				
				chr			type Product Customer Drawing			
				appd						
sheet index	revision sheet									



HOUSING # 65076-XXX(LF)  
TERMINAL # 75222-0XX(LF), 75288-0XX(LF)  
HANDTOOL # 75295-0XX(LF), 75296-0XX(LF)  
# HT 206



Copyright FCI

mat'l. code ---				surface ISO 1302 ✓		tolerance ISO 406 ISO		projection 101 		product family											
ltr	ecn no	dr	date	tolerances unless otherwise specified								title  ASSEMBLING P.V.HOUSING									
C	H30301	JvZ	930420	angles	linear																
D	F05-0235	DLE	05.08.24																		
E	F06-0218	DLE	06.07.11																		
				dr	J.v.Zelst		930420				dwg no				sheet 3 of -				size		
				engr							65076				A3						
				chr	M.Loman		930420														
				appd																	
sheet index		revision sheet																			

# Mouser Electronics

Authorized Distributor

Click to View Pricing, Inventory, Delivery & Lifecycle Information:

FCI:

[65076-001LF](#) [65076-002LF](#)