


## OPERATING CHARACTERISTICS <sup>4</sup>

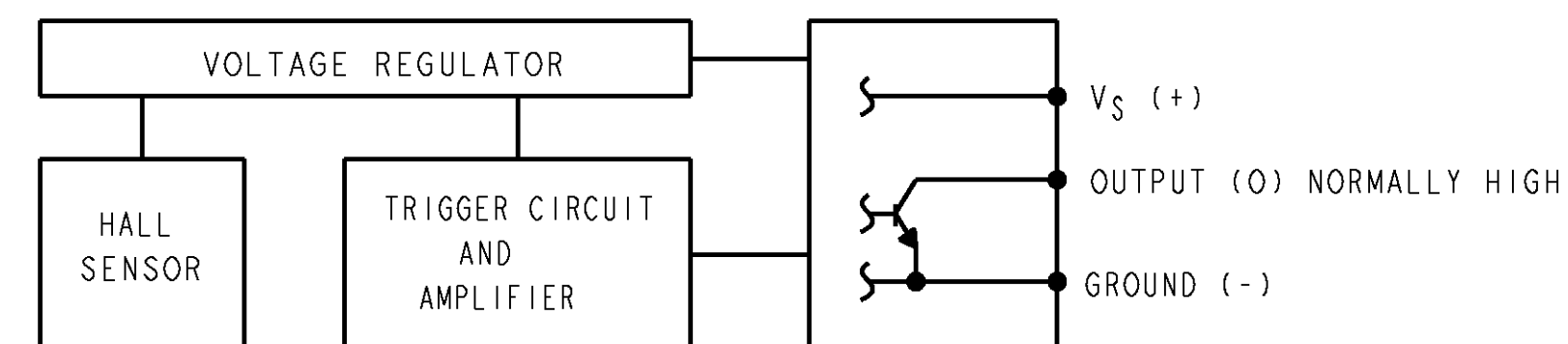
GAUSS	
OPERATE MAX	250
RELEASE MIN	-250
DIFF MIN	40

ABSOLUTE MAXIMUM RATINGS

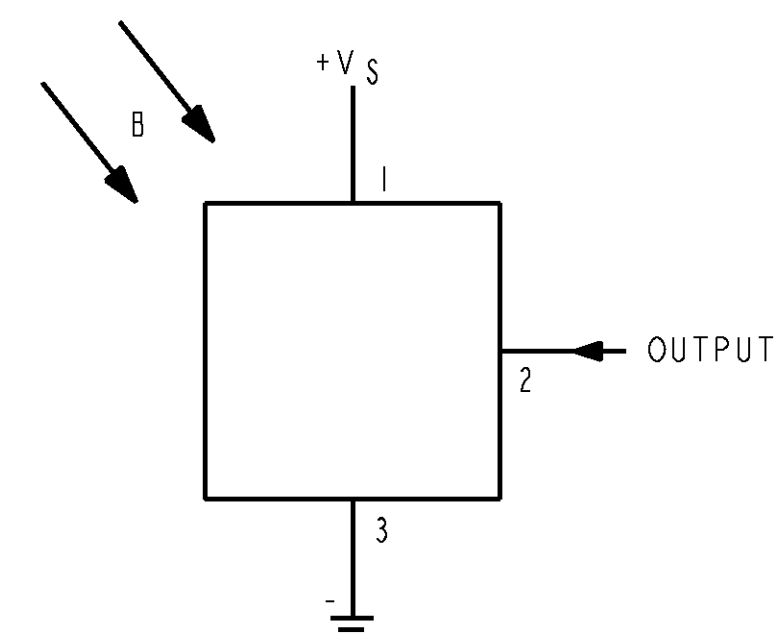
SUPPLY VOLTAGE ( $V_S$ ) 	-28 VDC TO +28 VDC
VOLTAGE EXTERNALLY APPLIED TO OUTPUT	+28 VOLTS DC MAX WITH SWITCH IN "OFF" CONDITION ONLY -0.5 VOLTS DC MIN WITH SWITCH IN "OFF" OR "ON" CONDITION
OUTPUT CURRENT	40 mA
TEMPERATURE OPERATE AND STORAGE	-40° C TO 150° C
MAGNETIC FLUX	NO LIMIT, THE CIRCUIT CANNOT BE DAMAGED BY MAGNETIC OVERDRIVE

## ELECTRICAL CHARACTERISTICS

	MIN	TYP	MAX	REMARKS
SUPPLY CURRENT		11 mA	15.50 mA	PLUS LOAD CURRENT $V_S = 4.5$ TO 24 VDC $\triangle_6$ $\triangle_{10}$
OUTPUT VOLTAGE (OPERATED) $\triangle_4$		0.15 VOLTS	0.4 VOLTS	SINKING 20mA
OUTPUT LEAKAGE CURRENT (RELEASED) $\triangle_4$			20 $\mu$ A	LEAKAGE INTO SWITCH OUTPUT
OUTPUT SWITCHING TIME (SINKING 8 mA)				
RISE TIME $\triangle_4$		0.2 $\mu$ SEC	1.5 $\mu$ SEC	10 - 90%
FALL TIME		0.1 $\mu$ SEC	0.5 $\mu$ SEC	90 - 10%



BLOCK DIAGRAM SHOWING CURRENT SINKING OUTPUTS



SWITCH SYMBOL

## NOTES

- ① FLUX ENTERING THE SOUTH POLE OF THE MAGNET WILL OPERATE THE SENSOR WHEN MAGNET IS POSITIONED AS SHOWN IN FIGURE 1. THIS ASSUMES THE CONVENTION THAT THE DIRECTION OF THE EXTERNAL FLUX OF A MAGNET IS FROM THE NORTH TO SOUTH POLE OF THE MAGNET
- ② CAN BE STACKED ON .375 INCH CENTERS
- ③ CATALOG LISTING AND DATE CODE ARE LOCATED ON THE SIDE OF THE DEVICE
- ④ AT SUPPLY VOLTAGE OF 4.5 TO 24 VOLTS AND FULL TEMPERATURE RANGE
- ⑤ SENSITIVE AREA IS LOCATED WITHIN .025 OF THIS POINT AND .065 BEHIND THIS POINT
- ⑥  $V_S$  IS THE UNREGULATED SUPPLY VOLTAGE
- ⑦ SENSITIVE AREA MARKED BY CROSSED LINES
- ⑧ MICRO SWITCH LOGO LOCATED IN THIS AREA
- ⑨ TERMINAL ACCEPTS .110 X .020 FASTON CONNECTOR
- ⑩ AT  $24 \pm 2^\circ\text{C}$

THIS DRAWING COVERS A PROPRIETARY ITEM AND IS THE PROPERTY OF MICRO SWITCH, A DIVISION OF HONEYWELL. THIS DRAWING IS NOT TO BE COPIED OR USED WITHOUT THE APPROVAL OF MICRO SWITCH.

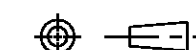
**MICRO SWITCH**  
a Honeywell Division

**MAGNETICALLY  
OPERATED  
HALL SWITCH**

CATALOG LISTING

**417SR10**

THIRD ANGLE PROJECTION



SCALE 3 : 1

DO NOT SCALE PRINT

UNLESS OTHERWISE SPECIFIED  
TOLERANCES ARE

ONE PLACE      (.0)       $\pm .030$

TWO PLACES ( . 00 ) ± 0.15

TWO PLACES	(.00)	1.015
THREE PLACES	(.000)	1.005

THREE PLACES (.000) ± .003  
ANGLES ± .001

ANGL
WEIGHT

ANSI Y14.5M-1982 APPLIES

FED MEG CODE 81838