

TABLE 1		
CARD SLOT THICKNESS	"A"	"G"
-02	.072 [1.83]	.0265[.673]

TABLE 3					
EDGE MOUNT OPTION	"B"	"C"	"D"	"E"	"F"
-EM1	.016 [.41]	.027 [.69]	.185 [4.70]	.05 [1.3]	.126 [3.20]
-EM2	.054 [1.37]	.058 [1.47]	.195 [4.95]	.04 [1.0]	.108 [2.74]

MEC1-1XX-XX-XX-D-EMX-XX

NO OF POSITIONS

-05, -08, -20, -30,  
-40, -50, -60 & -70  
(PER ROW)

CARD SLOT THICKNESS

-02: .062 THICK CARD  
(USE MEC1-XX-S-D-EMX-X)  
(SEE TABLE 1)

PLATING

-F: FLASH GOLD  
(USE C-150-07-F-P)  
-L: LIGHT SELECTIVE GOLD  
(USE C-150-07-L-P)  
-S: SELECTIVE GOLD  
(USE C-150-07-S-P)  
-FM: FLASH GOLD SELECTIVE, MATTE TIN TAIL  
(USE C-150-07-F-P)  
-LM: LIGHT SELECTIVE GOLD, MATTE TIN TAIL  
(USE C-150-07-L-P)  
-SM: SELECTIVE GOLD, MATTE TIN TAIL  
(USE C-150-07-S-P)

OPTIONS

-NP: NO POLARIZED POSITION  
(USE MEC1-XX-X-D-EMX-N)  
(ONLY AVAILABLE ON -05,  
-08, -20 & -30 POSITIONS)  
-TR: (SEE PAGE 2 -TR PACKAGE  
VIEW, NOT AVAILABLE FOR  
-60 OR -70 POS.)  
-BLANK: BODY IS POLARIZED

EDGE MOUNT OPTION

-EM1: .031 THICK PCB  
-EM2: .062 THICK PCB  
(SEE TABLE 3)

ROW SPECIFICATION

-D: DOUBLE  
(USE MEC1-XX-X-D-EMX-X)

\* NOT ENGINEERING APPROVED

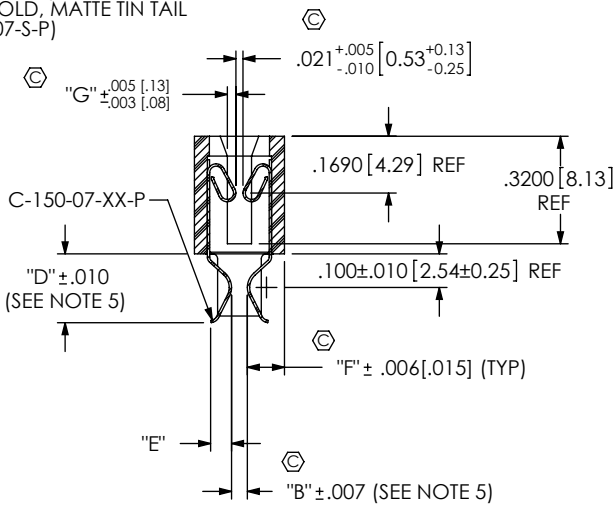
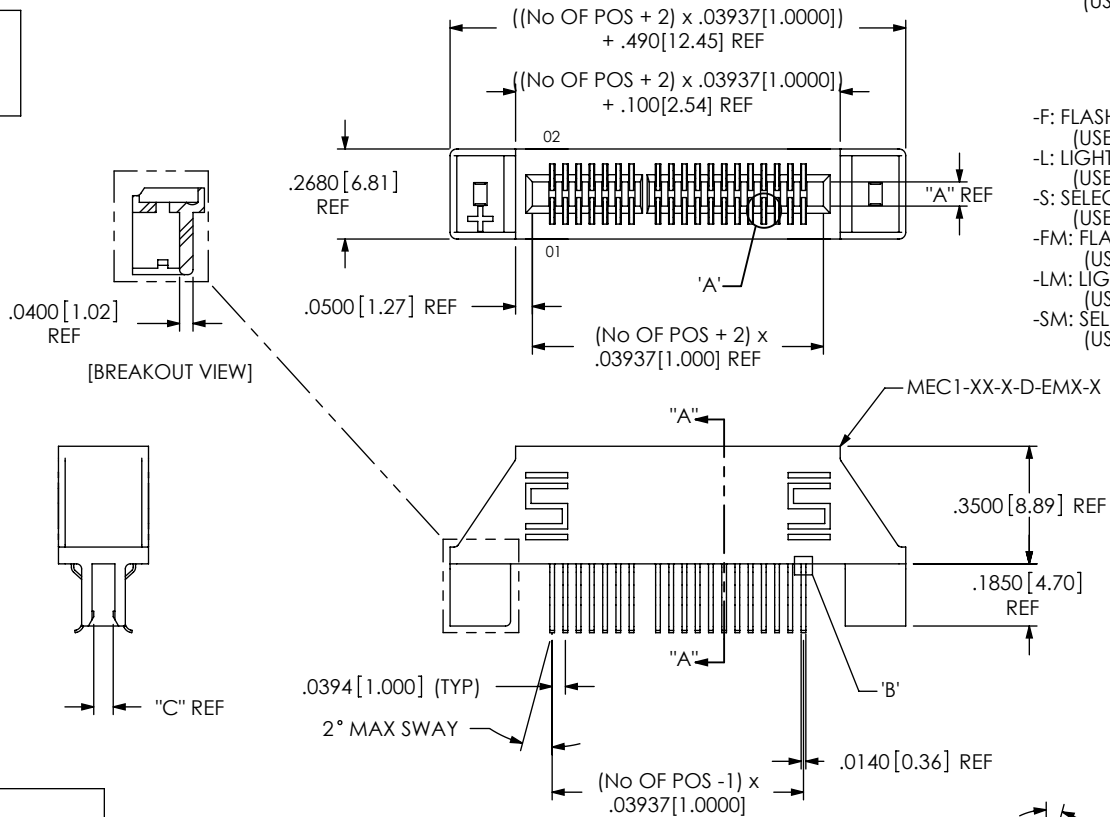


TABLE 2	
POSITIONS	POLARIZATION RIB POSITIONS
-05	03 & 04
-08	05 & 06
-20	15 & 16
-30	21 & 22
-40	31 & 32
-50	41 & 42
-60	31 & 32, 63 & 64
-70	53 & 54, 115 & 116

NOTES:

1. REPRESENTS A CRITICAL DIMENSION.
2. BURR ALLOWANCE: .0015[.038] MAX.
3. MINIMUM PUSHOUT FORCE: .5 LB.
4. DELETED.
5. .020[.51] MAX VARIATION ON ONE PART.
6. .0040[.102] MAX ALLOWABLE BURR ON TAILS.
7. DELETED.
8. .0050[.127] MAX BARB PROTRUSION BELOW BODY.
9. PART TO BE TRAY PACKAGED USING TRAY-XX-01.

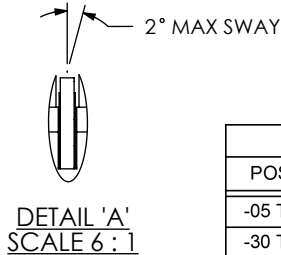
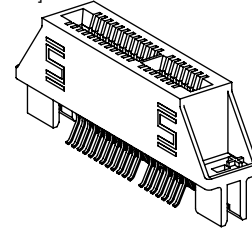


TABLE 4	
POSITIONS	MAX BOW (T/B)
-05 THRU -20	.0025[.064]
-30 THRU -50	.0040[.102]
-60 THRU -70	.0055[.140]



UNLESS OTHERWISE SPECIFIED,  
DIMENSIONS ARE IN INCHES.  
TOLERANCES ARE:  
DECIMALS ANGLES  
.XX: ±.01 [.3] 2°  
.XXX: ±.005 [.13]  
.XXXX: ±.0020 [.051]

PROPRIETARY NOTE

THIS DOCUMENT CONTAINS INFORMATION  
CONFIDENTIAL AND PROPRIETARY TO  
SAMTEC, INC. AND SHALL NOT BE REPRODUCED  
OR TRANSFERRED TO OTHER DOCUMENTS OR  
DISCLOSED TO OTHERS OR USED FOR ANY  
PURPOSE OTHER THAN THAT WHICH IT WAS  
OBTAINED WITHOUT THE EXPRESSED WRITTEN  
CONSENT OF SAMTEC, INC.

**samtec**

520 PARK EAST BLVD, NEW ALBANY, IN 47150  
PHONE: 812-944-6733 FAX: 812-948-5047  
e-Mail: info@SAMTEC.com code: 55322

MATERIAL: DO NOT SCALE DRAWING SHEET SCALE: 1:75:1

INSULATOR: LCP, COLOR: BLACK  
CONTACT: PHOS BRONZE

DESCRIPTION:

1mm MINI-EDGE, EDGE MOUNT ASSEMBLY

DWG. NO.

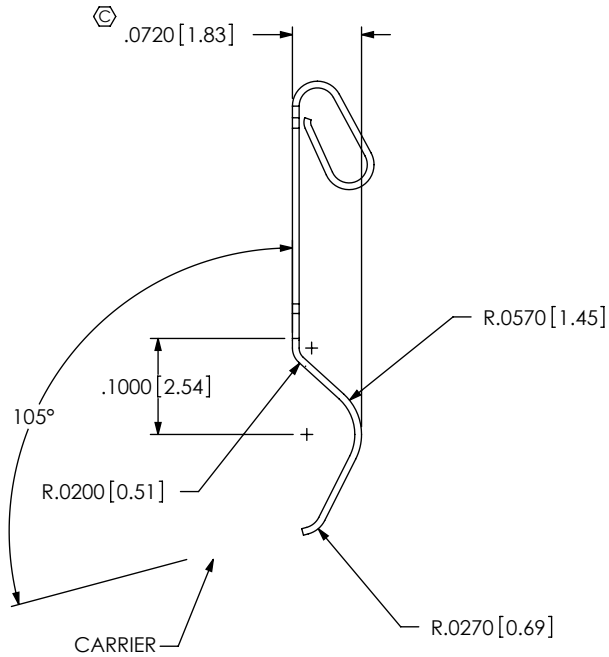
MEC1-1XX-XX-XX-D-EMX-XX

BY: KEVIN B

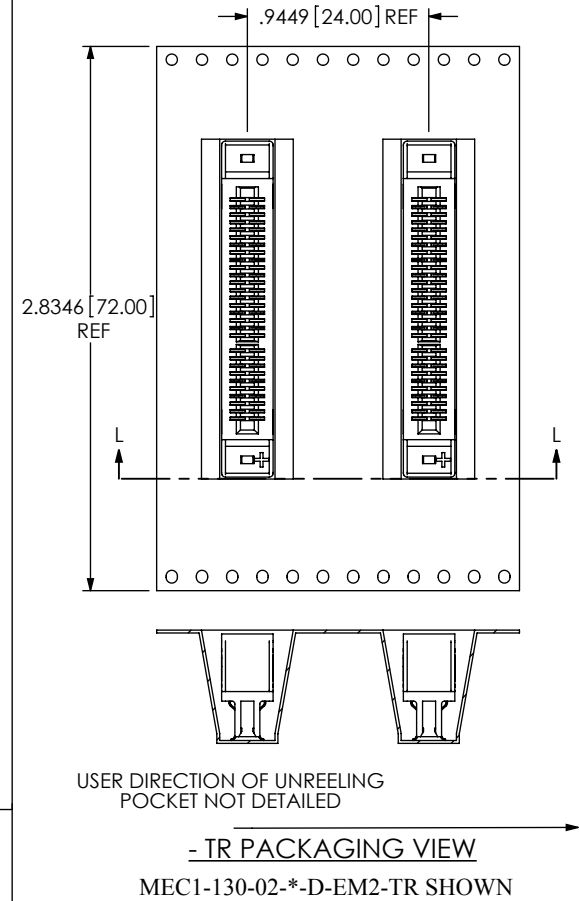
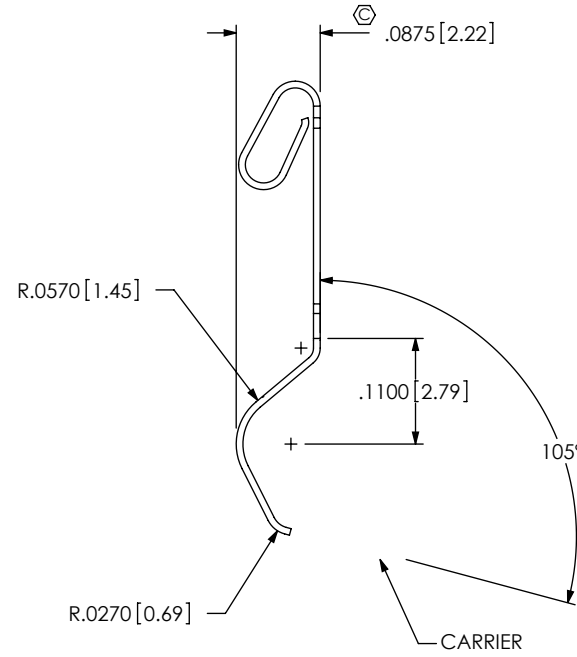
5/19/2000

SHEET 1 OF 3

[-EM2]



[-EM1]



PACKAGING VIEW

[PARTS TO HAVE POSITION #1 LOADED  
IN SAME DIRECTION FOR ALL PARTS]

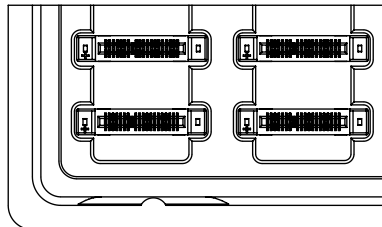
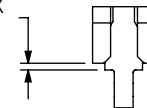


TABLE 6		PARTS PER TRAY
POSITIONS	USE TRAY	
-05	TRAY-MEC1001-PR-05-AP-T-B	66
-08	TRAY-MEC1002-PR-08-AP-T-B	66
-20	TRAY-MEC1003-PR-20-AP-T-B	55
-30	TRAY-MEC1004-PR-30-AP-T-B	11
-40	TRAY-MEC1005-PR-40-AP-T-B	33
-50	TRAY-MEC1006-PR-50-AP-T-B	33
-60	TRAY-MEC1007-PR-60-AP-T-B	22
-70	TRAY-MEC1008-PR-70-AP-T-B	22

.0050 [0.13] MAX  
(SEE NOTE 8)



DETAIL 'B'  
SCALE 7 : 1

PROPRIETARY NOTE

THIS DOCUMENT CONTAINS INFORMATION  
CONFIDENTIAL AND PROPRIETARY TO  
SAMTEC, INC. AND SHALL NOT BE REPRODUCED  
OR TRANSFERRED TO OTHER DOCUMENTS OR  
DISCLOSED TO OTHERS OR USED FOR ANY  
PURPOSE OTHER THAN THAT WHICH IT WAS  
OBTAINED WITHOUT THE EXPRESSED WRITTEN  
CONSENT OF SAMTEC, INC.

DO NOT SCALE DRAWING

SHEET SCALE: 1.75:1

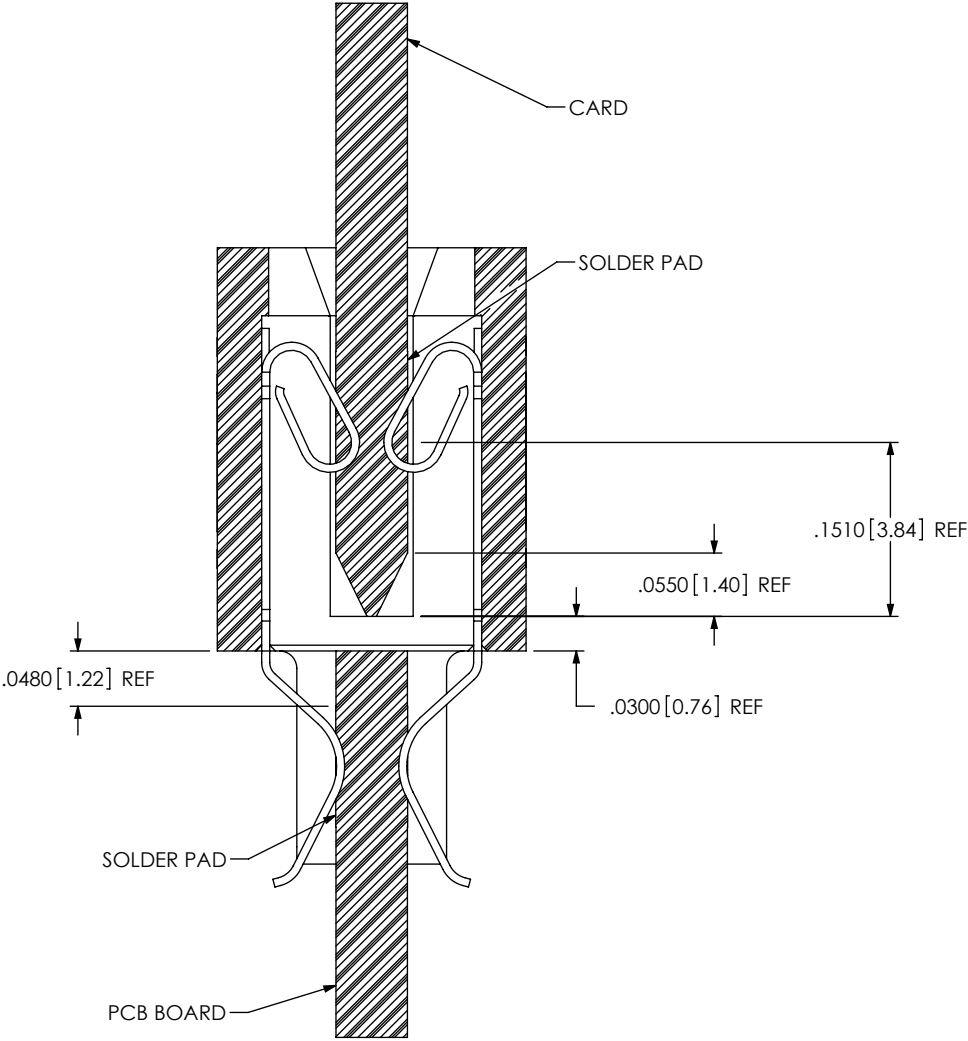
**samtec**

520 PARK EAST BLVD, NEW ALBANY, IN 47150  
PHONE: 812-944-6733 FAX: 812-948-5047  
e-Mail: info@SAMTEC.com code: 55322

DESCRIPTION:  
1mm MINI-EDGE, EDGE MOUNT ASSEMBLY

DWG. NO.  
**MEC1-1XX-XX-XX-D-EMX-XX**

BY: KEVIN B 5/19/2000 SHEET 2 OF 3



APPLICATION VIEW

PROPRIETARY NOTE

THIS DOCUMENT CONTAINS INFORMATION  
CONFIDENTIAL AND PROPRIETARY TO  
SAMTEC, INC. AND SHALL NOT BE REPRODUCED  
OR TRANSFERRED TO OTHER DOCUMENTS OR  
DISCLOSED TO OTHERS OR USED FOR ANY  
PURPOSE OTHER THAN THAT WHICH IT WAS  
OBTAINED WITHOUT THE EXPRESSED WRITTEN  
CONSENT OF SAMTEC, INC.

DO NOT SCALE DRAWING

SHEET SCALE: 1.75:1



520 PARK EAST BLVD, NEW ALBANY, IN 47150  
PHONE: 812-944-6733 FAX: 812-948-5047  
e-Mail: info@SAMTEC.com code: 55322

DESCRIPTION:  
1mm MINI-EDGE, EDGE MOUNT ASSEMBLY

DWG. NO.  
MEC1-1XX-XX-XX-D-EMX-XX

BY: KEVIN B 5/19/2000 SHEET 3 OF 3