

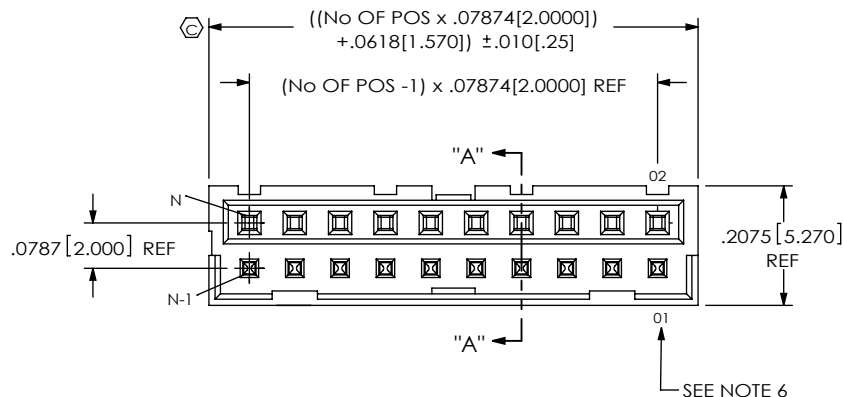
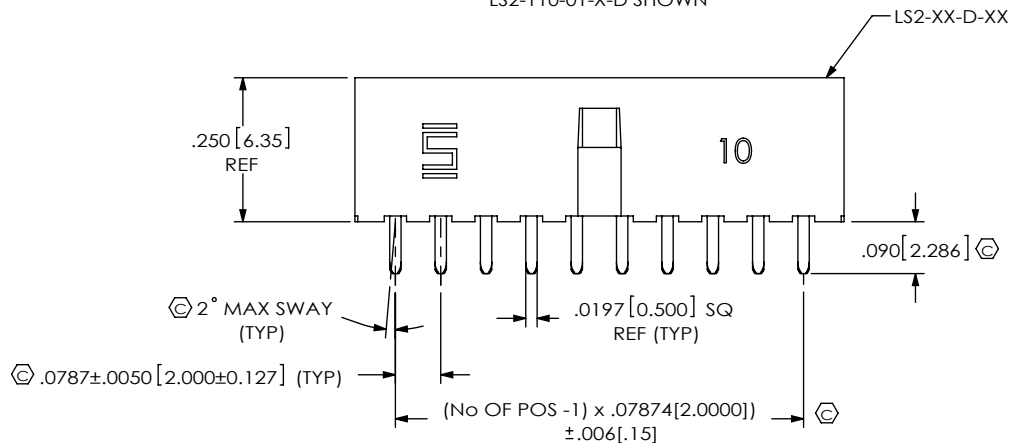
DO NOT
SCALE FROM
THIS PRINTFIG 1
LS2-110-01-X-D SHOWN

TABLE 2

STYLE	OPTION	TERMINAL	CONTACT
-01	---	T-1S13-20-XXX-2	C-79-01-XXX
	-RA1	T-1S13-03-XXX-2	C-79-12-XXX
	-RA2	T-1S13-10-XXX-2	C-79-12-XXX
-02	---	T-1S13-13-XXX-2	C-79-12-XXX

NOTES:

1. \odot REPRESENTS A CRITICAL DIMENSION.
2. BURR ALLOWANCE: .003[.08] MAX.
3. MAXIMUM CUT FLASH: .015[.38].
4. MINIMUM PUSHOUT FORCE: TERMINALS: 2 LBS., CONTACTS: .5 LBS.
5. MAXIMUM ALLOWABLE BOW: .002 INCH/INCH AFTER ASSEMBLY.
6. SEE APPLICATION VIEWS (SHEET 3) FOR POSITION 01 LOCATION.
7. ALL PIN TO PIN DIMENSIONS TO BE MEASURED FROM TIP TO TIP.
8. DIMENSION TO BE MEASURED AT BEND.
9. SHEAR TAILS TO DIMENSION SHOWN.

LS2-1XX-XX-XX-D-XXX-X

No OF POSITIONS

-05, -10, -15, -20,
-25, -30
(PER ROW)

LEAD STYLE

-01: THROUGH HOLE
-02: SURFACE MOUNT
(SEE FIG 2)

PLATING SPECIFICATION

-F: FLASH SELECTIVE GOLD
(USE T-1S13-XX-F-2 & C-79-XX-F)
-FM: FLASH SELECTIVE GOLD
MATTE TIN REMAINDER
(USE T-1S13-XX-F-2 & C-79-XX-F)
-L: LIGHT SELECTIVE GOLD
(USE T-1S13-XX-L-2 & C-79-XX-L)
-LM: LIGHT SELECTIVE GOLD
MATTE TIN REMAINDER
(USE T-1S13-XX-L-2 & C-79-XX-L)
-S: SELECTIVE GOLD
(USE T-1S13-XX-S-2 & C-79-XX-S)
-SM: SELECTIVE GOLD
MATTE TIN REMAINDER
(USE T-1S13-XX-S-2 & C-79-XX-S)
-G: GOLD
(USE T-1S13-XX-G-2 & C-79-XX-G)
-H: HEAVY GOLD
(USE T-1S13-XX-H-2 & C-79-XX-H)

OPTION

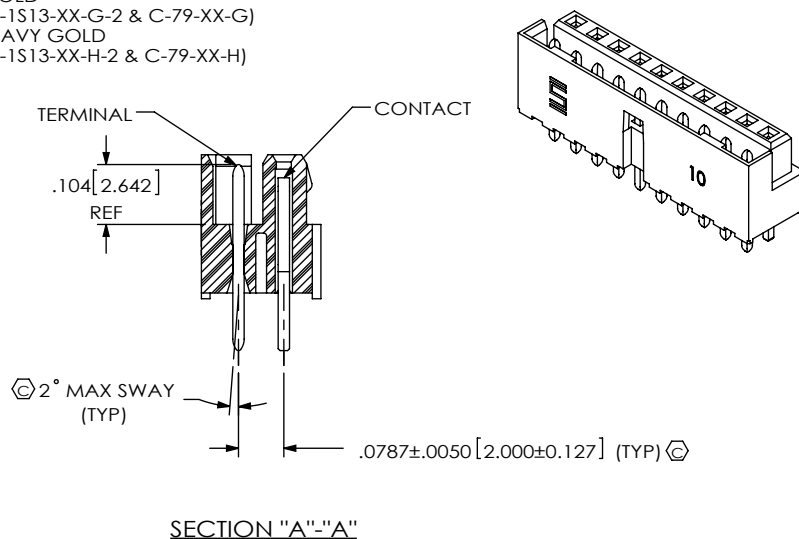
-K: POLYIMIDE FILM PAD
(USE K-DOT-.246-.375-.005, SEE FIG 5)
[LEAD STYLE -02 ONLY]
-A: ALIGNMENT PIN
(USE LS2-XX-D-XX-A, SEE FIG 6)
[LEAD STYLE -02 ONLY]
-TR: TAPE & REEL

TAIL OPTION

-RA1: RIGHT ANGLE-
SHROUD DOWN (SEE FIG 3)
-RA2: RIGHT ANGLE-
SHROUD UP (SEE FIG 4)
[AVAILABLE ONLY ON LEAD STYLE -01]

ROW SPECIFICATION

-D: DOUBLE (USE LS2-XX-D-XX)



SECTION "A"-"A"

UNLESS OTHERWISE SPECIFIED,
DIMENSIONS ARE IN INCHES.

TOLERANCES ARE:

DECIMALS ANGLES
.XX: ±.01 [.3] 2°
.XXX: ±.005 [.13]
.XXXX: ±.0020 [.051]

* PROPRIETARY NOTE *

THIS DOCUMENT CONTAINS CONFIDENTIAL AND
PROPRIETARY INFORMATION AND ALL DESIGN,
MANUFACTURING, REPRODUCTION, USE, PATENT RIGHTS
AND SALES RIGHTS ARE EXPRESSLY RESERVED BY SAMTEC,
INC. THIS DOCUMENT SHALL NOT BE DISCLOSED, IN WHOLE
OR PART, TO ANY UNAUTHORIZED PERSON OR ENTITY NOR
REPRODUCED, TRANSFERRED OR INCORPORATED IN ANY
OTHER PROJECT IN ANY MANNER WITHOUT THE EXPRESS
WRITTEN CONSENT OF SAMTEC, INC.

MATERIAL: DO NOT SCALE DRAWING
INSULATOR: LCP, COLOR: BLACK
SOCKET: PHOS BRONZE
TERMINAL: PHOS BRONZE

SHEET SCALE: 3:1

samtec

520 PARK EAST BLVD, NEW ALBANY, IN 47150
PHONE: 812-944-6733 FAX: 812-948-5047
e-Mail: info@SAMTEC.com code: 55322

DESCRIPTION:

2mm TERMINAL/SOCKET COMBO

DWG. NO.

LS2-1XX-XX-XX-D-XXX-X

BY: DEAN P

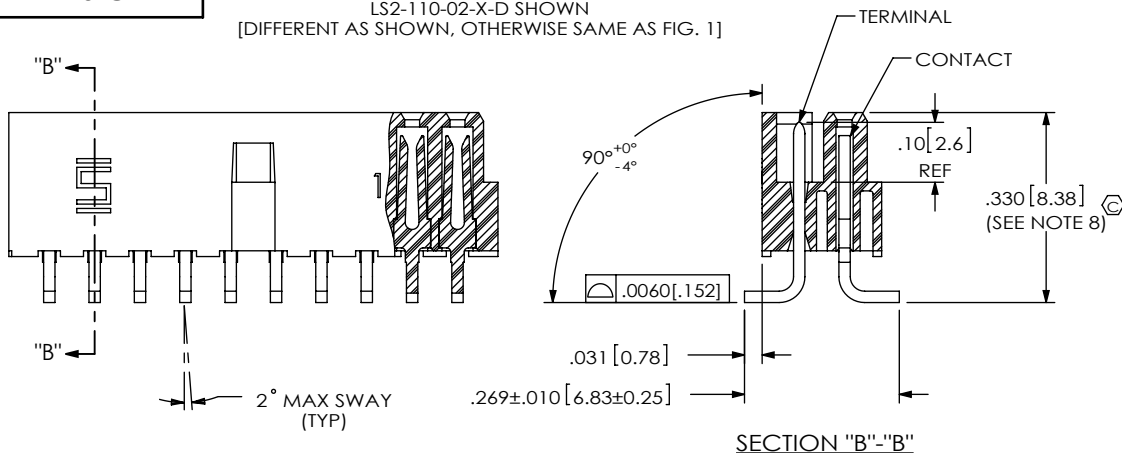
4/24/2002

SHEET 1 OF 4

REVISION V

FIG 2

LS2-110-02-X-D SHOWN
[DIFFERENT AS SHOWN, OTHERWISE SAME AS FIG. 1]



STYLE -02-D IN-PROCESS VIEWS

IN-PROCESS 1

IN-PROCESS 2

IN-PROCESS 3

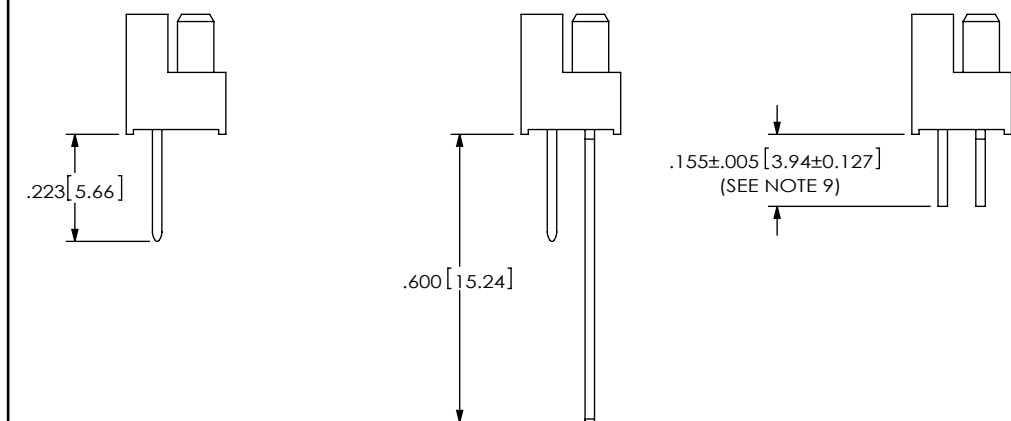
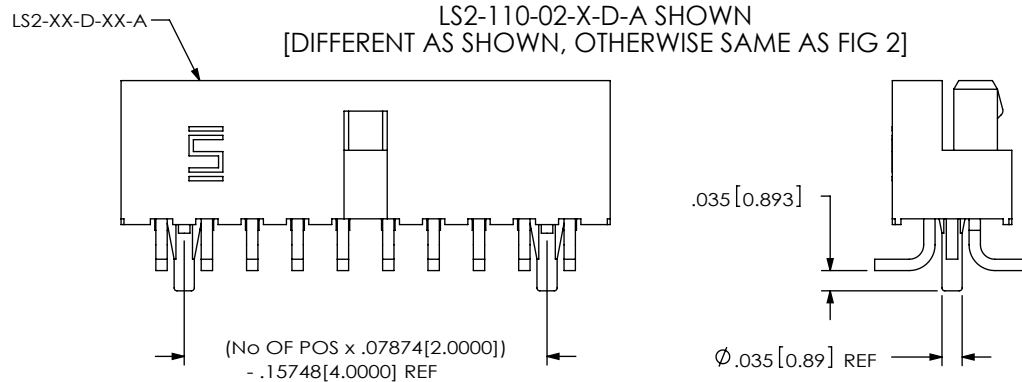


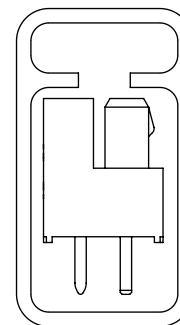
FIG 6

-A: ALIGNMENT PIN OPTION
LS2-110-02-X-D-A SHOWN
[DIFFERENT AS SHOWN, OTHERWISE SAME AS FIG 2]



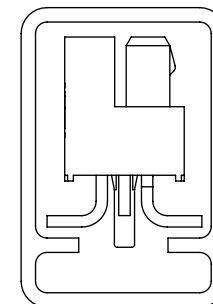
PACKAGING VIEWS

STYLE -01



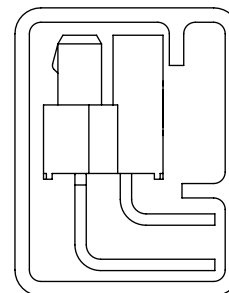
TUBE: PT-1-24-04-09
PLUG: TP-07

STYLE -02



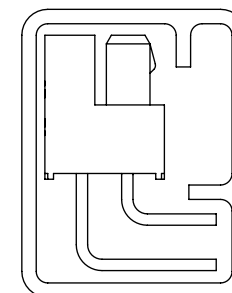
TUBE: PT-1-24-01-123
PLUG: TP-03

STYLE -01-RA1



TUBE: PT-1-24-01-124
PLUG: TP-07

STYLE -01-RA2



TUBE: PT-1-24-01-124
PLUG: TP-07

PROPRIETARY NOTE
THIS DOCUMENT CONTAINS CONFIDENTIAL AND PROPRIETARY INFORMATION AND ALL DESIGN, MANUFACTURING, REPRODUCTION, USE, PATENT RIGHTS AND SALES RIGHTS ARE EXPRESSLY RESERVED BY SAMTEC, INC. THIS DOCUMENT SHALL NOT BE DISCLOSED, IN WHOLE OR PART, TO ANY UNAUTHORIZED PERSON OR ENTITY NOR REPRODUCED, TRANSFERRED OR INCORPORATED IN ANY OTHER PROJECT IN ANY MANNER WITHOUT THE EXPRESS WRITTEN CONSENT OF SAMTEC, INC.

DO NOT SCALE DRAWING

SHEET SCALE: 3:1

samtec

520 PARK EAST BLVD, NEW ALBANY, IN 47150
PHONE: 812-944-6733 FAX: 812-948-5047
e-Mail: info@SAMTEC.com code: 55322

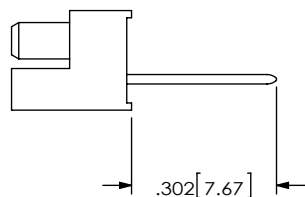
DESCRIPTION: 2mm TERMINAL/SOCKET COMBO

DWG. NO. LS2-1XX-XX-XX-D-XXX-X

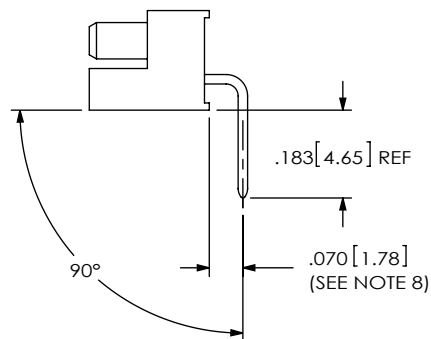
BY: DEAN P 4/24/2002 SHEET 2 OF 4

REVISION V

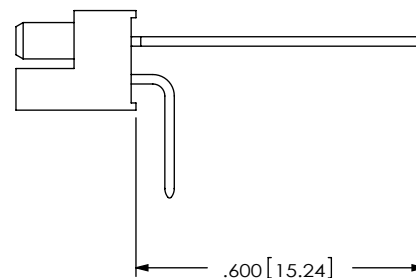
IN-PROCESS 1



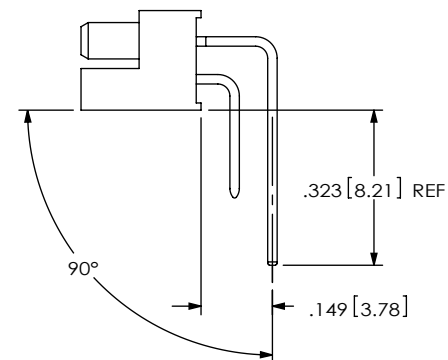
IN-PROCESS 2



IN-PROCESS 3



IN-PROCESS 4



STYLE -01-RA1 IN-PROCESS VIEWS

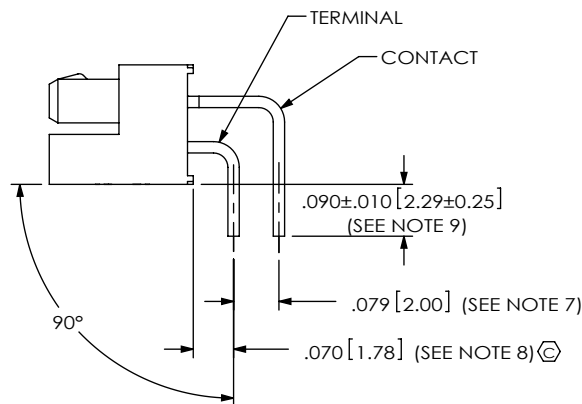
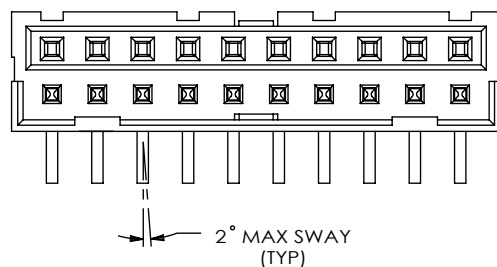
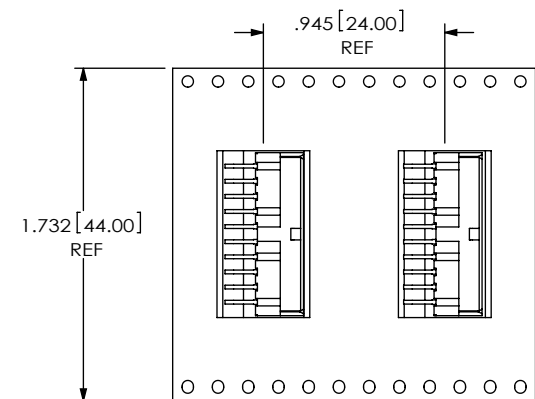
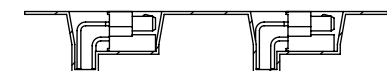


FIG 3
LS2-110-01-X-D-RA1 SHOWN
[DIFFERENT AS SHOWN, OTHERWISE SAME AS FIG 1]
* AVAILABLE ONLY ON LEAD STYLE -01 *



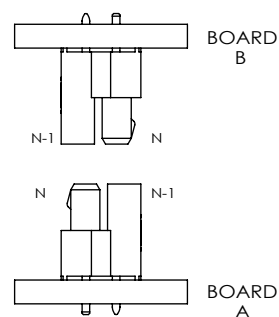
USER DIRECTION OF UN-REELING
POCKET NOT DETAILED



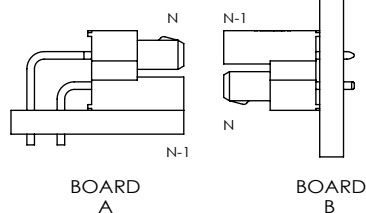
STYLE-01-RA1 PACKAGING VIEW

PARTS MUST BE ORIENTED PER THE DESIGN
OF THE POCKET AND POCKET TOOL.
POCKETS DESIGNED AFTER REVISION Q MUST
ORIENT PARTS PER THIS VIEW.

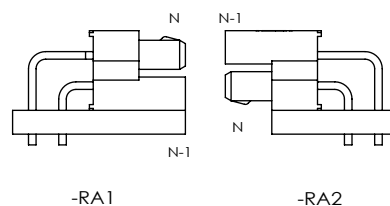
APPLICATION VIEWS



PARALLEL
BOARD-TO-BOARD



PERPENDICULAR
BOARD-TO-BOARD



IN-LINE PARALLEL
BOARD-TO-BOARD

PROPRIETARY NOTE
THIS DOCUMENT CONTAINS CONFIDENTIAL AND
PROPRIETARY INFORMATION AND ALL DESIGN,
MANUFACTURING, REPRODUCTION, USE, PATENT RIGHTS
AND SALES RIGHTS ARE EXPRESSLY RESERVED BY SAMTEC,
INC. THIS DOCUMENT SHALL NOT BE DISCLOSED, IN WHOLE
OR PART, TO ANY UNAUTHORIZED PERSON OR ENTITY NOR
REPRODUCED, TRANSFERRED OR INCORPORATED IN ANY
OTHER PROJECT IN ANY MANNER WITHOUT THE EXPRESS
WRITTEN CONSENT OF SAMTEC, INC.

DO NOT SCALE DRAWING

SHEET SCALE: 3:1

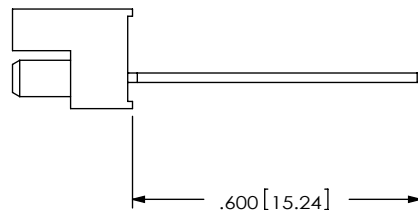
samtec

520 PARK EAST BLVD, NEW ALBANY, IN 47150
PHONE: 812-944-6733 FAX: 812-948-5047
e-Mail: info@SAMTEC.com code: 55322

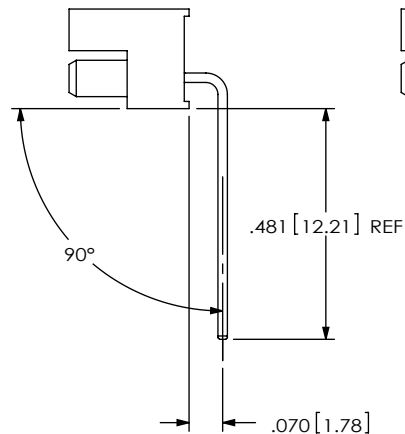
DESCRIPTION:
2mm TERMINAL/SOCKET COMBO
DWG. NO.
LS2-1XX-XX-XX-D-XXX-X

BY: DEAN P 4/24/2002 SHEET 3 OF 4

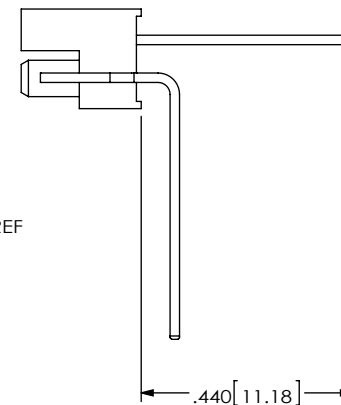
IN-PROCESS 1



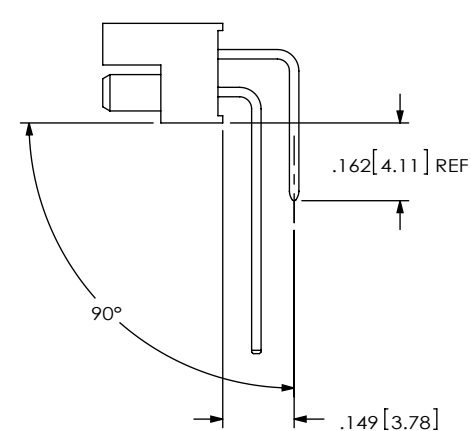
IN-PROCESS 2



IN-PROCESS 3



IN-PROCESS 4



STYLE -01-RA2 IN-PROCESS VIEWS

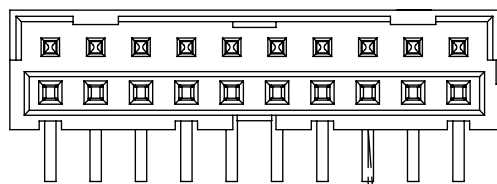


FIG 4

LS2-110-01-X-D-RA2 SHOWN
[DIFFERENT AS SHOWN, OTHERWISE SAME AS FIG 1]

* AVAILABLE ONLY ON LEAD STYLE -01 *

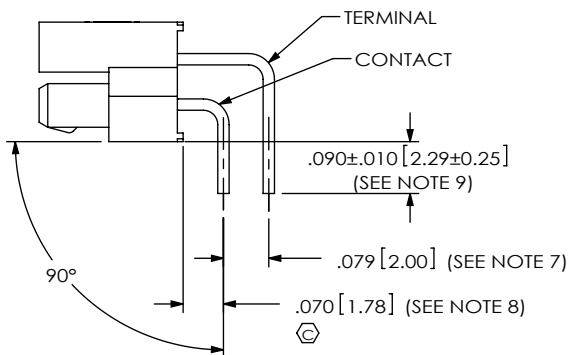
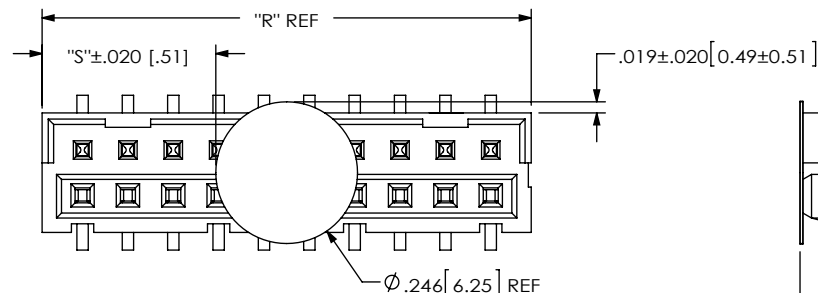


FIG 5

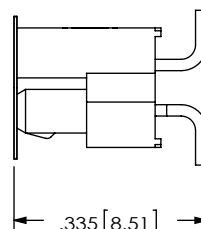
-K: POLYIMIDE FILM PAD OPTION



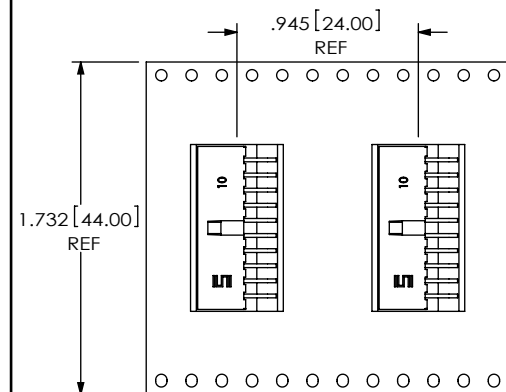
NOTE:

"R" = (No OF POS x .07874 [2.0000]) + .06181 [1.570]

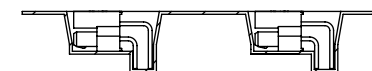
"S" = ("R" - .2460 [6.248]) / 2



C:\EnterpriseVault\DWG\MISC\MKTG\LS2-1XX-XX-XX-D-XXX-X-MKT.SLDDRW



USER DIRECTION OF UN-REELING
POCKET NOT DETAILED



STYLE-01-RA2 PACKAGING VIEW
PARTS MUST BE ORIENTED PER THE DESIGN
OF THE POCKET AND POCKET TOOL.
POCKETS DESIGNED AFTER REVISION Q MUST
ORIENT PARTS PER THIS VIEW.

PROPRIETARY NOTE
THIS DOCUMENT CONTAINS CONFIDENTIAL AND
PROPRIETARY INFORMATION AND ALL DESIGN,
MANUFACTURING, REPRODUCTION, USE, PATENT RIGHTS
AND SALES RIGHTS ARE EXPRESSLY RESERVED BY SAMTEC,
INC. THIS DOCUMENT SHALL NOT BE DISCLOSED, IN WHOLE
OR PART, TO ANY UNAUTHORIZED PERSON OR ENTITY NOR
REPRODUCED, TRANSFERRED OR INCORPORATED IN ANY
OTHER PROJECT IN ANY MANNER WITHOUT THE EXPRESS
WRITTEN CONSENT OF SAMTEC, INC.

DO NOT SCALE DRAWING

SHEET SCALE: 3:1

samtec

520 PARK EAST BLVD, NEW ALBANY, IN 47150
PHONE: 812-944-6733 FAX: 812-948-5047
e-Mail: info@SAMTEC.com code: 55322

DESCRIPTION:

2mm TERMINAL/SOCKET COMBO

DWG. NO.

LS2-1XX-XX-XX-D-XXX-X

BY: DEAN P

4/24/2002

SHEET 4 OF 4