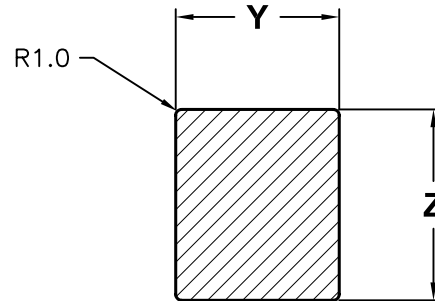
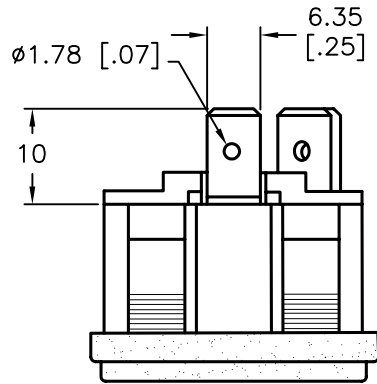


# REVISIONS

DOC. NO. SPC-F005 \* Effective: 7/8/02 \* DCP No: 1398

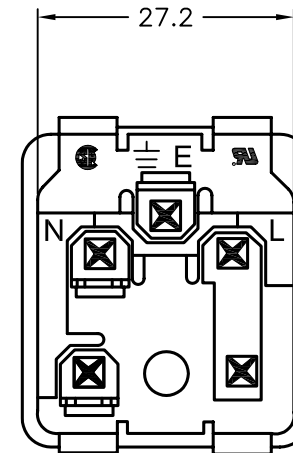
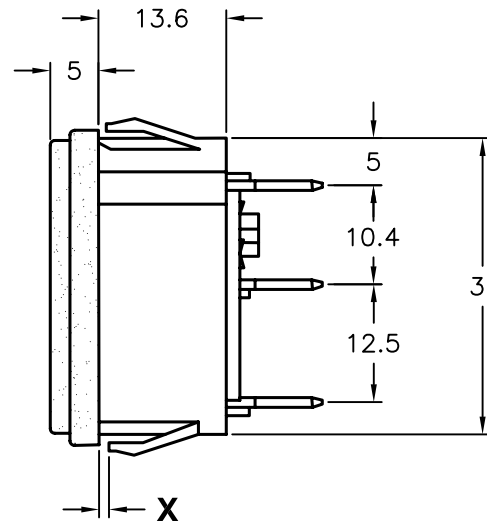
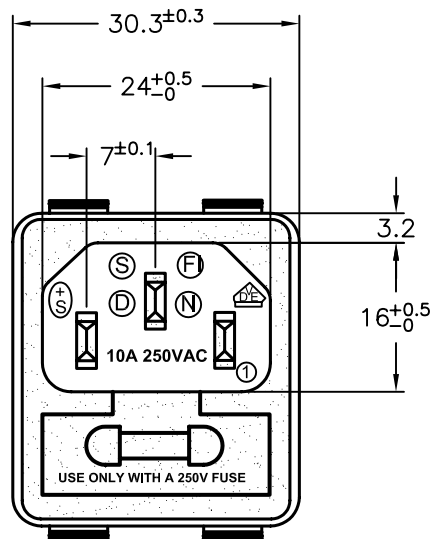
DCP #	REV	DESCRIPTION	DRAWN	DATE	CHECKD	DATE	APPRVD	DATE
162	A	RELEASED	JWM	1/27/98	JC	2/4/98	BB	2/6/98
1780	B	Rohs Added	DCM	10/16/05	JWM	10/24/05	JWM	10/24/05



Rating: 10A250VAC  
Approved: UL CSA, NEMKO VDE DEMKO, SEMKO, FIMKO, SEV  
Insulation Resistance: 100M @ 500VDC Min.  
Dielectric Strength: 2000VAC/1milliamp 1 minute

NOTE: Dual fuseholder, One Active, One Spare  
Fuses not included - Recommended Size: 5 x 20mm

X Panel Thickness	Y (+0.2 / -0)	Z (+0.5 / -0)
0.8 ~ 1.25mm	27.3	31.4
1.25 ~ 2.0mm	27.3	31.6



DISCLAIMER:  
ALL STATEMENTS AND TECHNICAL INFORMATION CONTAINED HEREIN ARE BASED UPON INFORMATION AND/OR TESTS WE BELIEVE TO BE ACCURATE AND RELIABLE. SINCE CONDITIONS OF USE ARE BEYOND OUR CONTROL, THE USER SHALL DETERMINE THE SUITABILITY OF THE PRODUCT FOR THE INTENDED USE AND ASSUME ALL RISK AND LIABILITY WHATSOEVER IN CONNECTION THEREWITH.

TOLERANCES:  
UNLESS OTHERWISE SPECIFIED, DIMENSIONS ARE FOR REFERENCE PURPOSES ONLY.

DRAWN BY:	DATE:
Jeff McVicker	1/27/98
CHECKED BY:	DATE:
JOHN COLE	2/4/98
APPROVED BY:	DATE:
Brett Braatz	2/6/98

DRAWING TITLE: Power Inlet w/Fuseholder, IEC320-C14			
SIZE A	DWG. NO. 2152	ELECTRONIC FILE 92N4155.dwg	REV B
SCALE: NTS		U.O.M.: Millimeters [Inches]	SHEET: 1 OF 1