

TABLE 1	
PART NUMBER	"B"
SCRUS-17-X-XX-XX-AMS-AM	30[1.18]
SCRUS-17-X-XX-XX-BMS-BM	30[1.18]
SCRUS-17-X-XX-XX-AMS-BC	15[.59]
SCRUS-17-X-XX-XX-BMS-BC	15[.59]
SCRUS-17-X-XX-XX-BMS-AM	30[1.18]
SCRUS-17-X-XX-XX-AMS-BM	30[1.18]
SCRUS-17-X-XX-XX-BMS-MB	23.5[.925]
SCRUS-17-X-XX-XX-AMS-MB	23.5[.925]

DO NOT  
SCALE FROM  
THIS PRINT

DESIGNED & DIMENSIONED  
IN MILLIMETERS[INCHES]

**THIS PRODUCT MANUFACTURED  
WITH LEAD-FREE PROCESSING**

SCRUS-17-X-XX.XX-XXX-XX

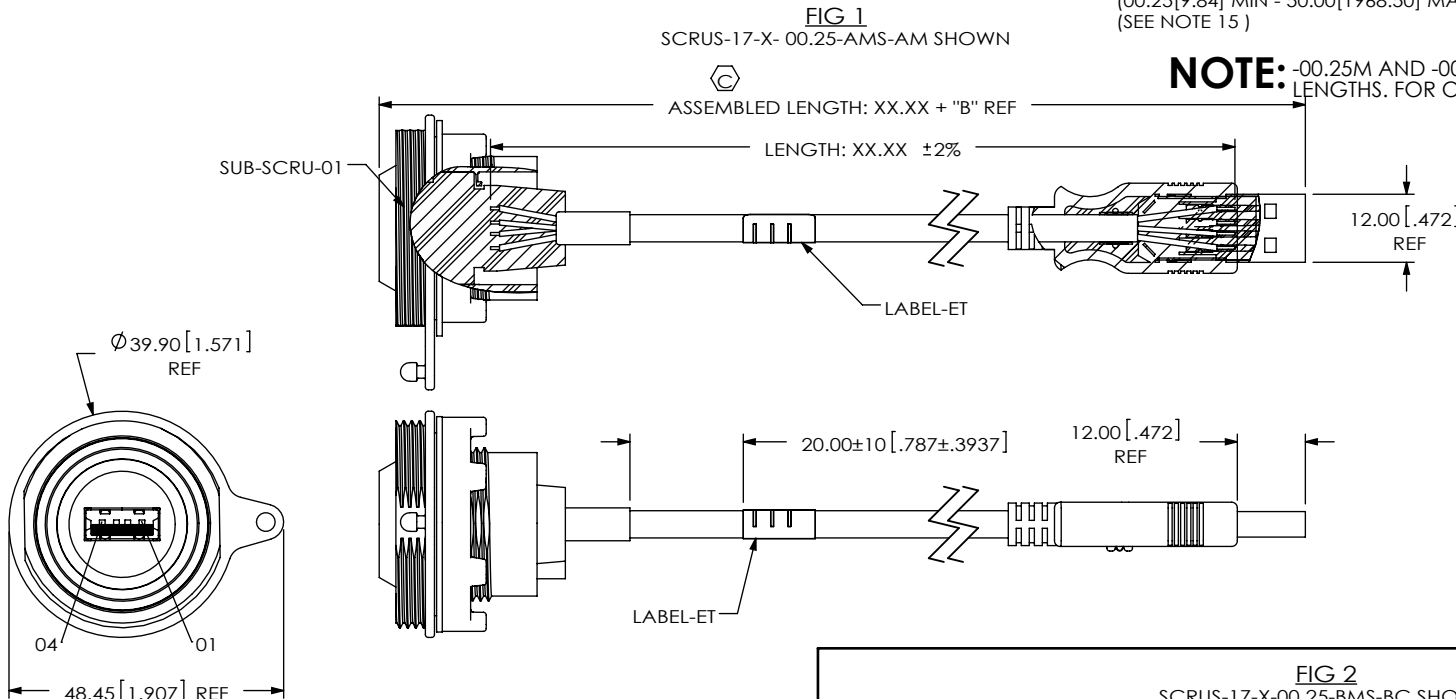
**PLATING**  
-G: .000030" GOLD ON  
CONTACT AREAS, NICKEL  
ON SHELLS

**LENGTH**  
-XX.XX LENGTH IN METERS  
(00.25[9.84] MIN - 50.00[1968.50] MAX)  
(SEE NOTE 15)

**END OPTION 2**  
-AM: USB A TYPE PLUG,  
UNSEALED  
-BM: USB B TYPE PLUG,  
UNSEALED  
-BC: BLUNT CUT  
-MB: MINI USB B TYPE PLUG,  
UNSEALED

**END OPTION 1**  
-AMS: USB A TYPE JACK,  
SEALED  
-BMS: USB B TYPE JACK,  
SEALED

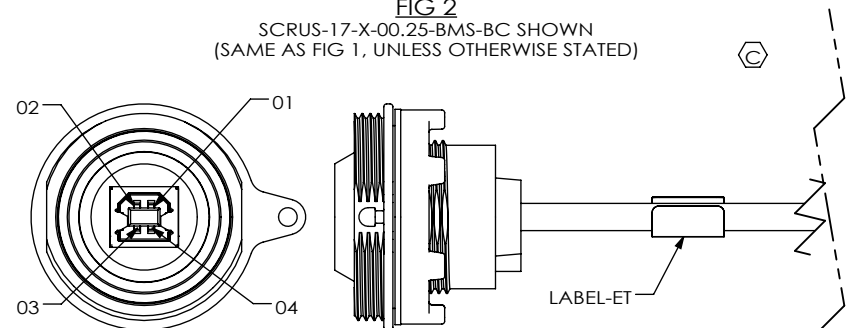
**NOTE:** -00.25M AND -00.50M ARE CATALOG STANDARD  
LENGTHS. FOR OTHER LENGTHS CONTACT SAMTEC.



NOTES:

1. REPRESENTS A CRITICAL DIMENSION.
2. ASSEMBLY TO BE 100% TESTED FOR OPENS AND SHORTS, HI-POT TEST AT 200V BEFORE PREMOLD IN-PROCESS AND ON FINISHED ASSEMBLY. AFTER FINAL ELECTRICAL TEST, LABEL EACH ASSEMBLY WITH 1 LABEL-ET.
3. NOTE DELETED.
4. USB LOGO TO BE RAISED 0.25[.010].
5. PANEL THICKNESS: 0.76[.030] - 5.2[.205].
6. THE SUB-SCRU-01 END OF CABLE ASSEMBLY TO BE COVERED WITH ANTISTATIC BUBBLE BAG ASSBLT 4 x 5.5.
7. TORQUE SPECIFICATION FOR NUT ON SUB-SCRU-01 IS 12 IN-LB.
8. NOTE DELETED.
9. ALL IDENTIFICATION MARKS MUST NOT STAND GREATER THAN 0.051[.002] OFF THE SURFACE OF THE PART.
10. MOLD TO BE INSERTED TO ACCEPT DIFFERENT CABLE DIAMETERS.
11. ALL EJECTOR PIN AND GATE LOCATIONS MUST BE APPROVED BY SAMTEC PRODUCT ENGINEERING.
12. ANY ADDITIONAL VOIDING AND/OR MODIFICATIONS TO VOIDING MUST BE APPROVED BY SAMTEC PRODUCT ENGINEERING.
13. THIS IS A COMPONENT OF USBP-A-01-G-B-01 (CALLED OUT ON THE BOM), BUT LABELED INDIVIDUALLY FOR ASSEMBLY PURPOSES.
14. THIS IS A COMPONENT OF USBP-B-01-G-B-01 (CALLED OUT ON THE BOM), BUT LABELED INDIVIDUALLY FOR ASSEMBLY PURPOSES.
15. LENGTHS GREATER THAN 01.00M ARE NOT SUPPORTED BY USB 2.0 TEST DATA.
16. NOTE DELETED.

**FIG 2**  
SCRUS-17-X-00.25-BMS-BC SHOWN  
(SAME AS FIG 1, UNLESS OTHERWISE STATED)



UNLESS OTHERWISE SPECIFIED,  
DIMENSIONS ARE IN MILLIMETERS.  
TOLERANCES ARE:  
DECIMALS ANGLES  
X.X: ±0.35 [.013]  
X.XX: ±0.25 [.010]  
X.XXX: ±0.15 [.006]

**PROPRIETARY NOTE**

THIS DOCUMENT CONTAINS CONFIDENTIAL AND  
PROPRIETARY INFORMATION AND ALL DESIGN,  
MANUFACTURING, REPRODUCTION, USE, PATENT RIGHTS  
AND SALES RIGHTS ARE EXPRESSLY RESERVED BY SAMTEC,  
INC. THIS DOCUMENT SHALL NOT BE DISCLOSED, IN WHOLE  
OR PART, TO ANY UNAUTHORIZED PERSON OR ENTITY NOR  
REPRODUCED, TRANSFERRED OR INCORPORATED IN ANY  
OTHER PROJECT IN ANY MANNER WITHOUT THE EXPRESS  
WRITTEN CONSENT OF SAMTEC, INC.

**samtec**

520 PARK EAST BLVD, NEW ALBANY, IN 47150  
PHONE: 812-944-6733 FAX: 812-948-5047  
e-Mail: info@SAMTEC.com code 55322

**MATERIAL:**

INSULATOR: GLASS FILLED THERMOPLASTIC  
CONTACTS: COPPER ALLOY  
SHIELDS: CR5  
CABLE NUT: PA66  
SEALED PREMOLD: TPE(RF 640A), SHOT WEIGHT: 10.66g [.024lb]  
SEALED OVERMOLD: PA66 GF13 FR(70G13L); MAX REGRIND: 10%, SHOT WEIGHT: 12.70g [.028lb]  
NON-SEALED OVERMOLD: PVC; MAX REGRIND: 30%, SHOT WEIGHT: 9.07g [.020lb]

DO NOT SCALE DRAWING

SHEET SCALE: 3:4

MAX FLASH ALLOWED: 0.05[.002]  
MAX GATE VESTIGE: 0.05[.002]

**DESCRIPTION:**

PANEL MOUNT SEALED USB CABLE

DWG. NO.

SCRUS-17-X-XX.XX-XXX-XX

BY: LENNY K

09-01-2010

SHEET 1 OF 15

FIG 3  
SCRUS-17-X-00.25-BMS-BM SHOWN  
(SAME AS FIG 1, UNLESS OTHERWISE STATED)

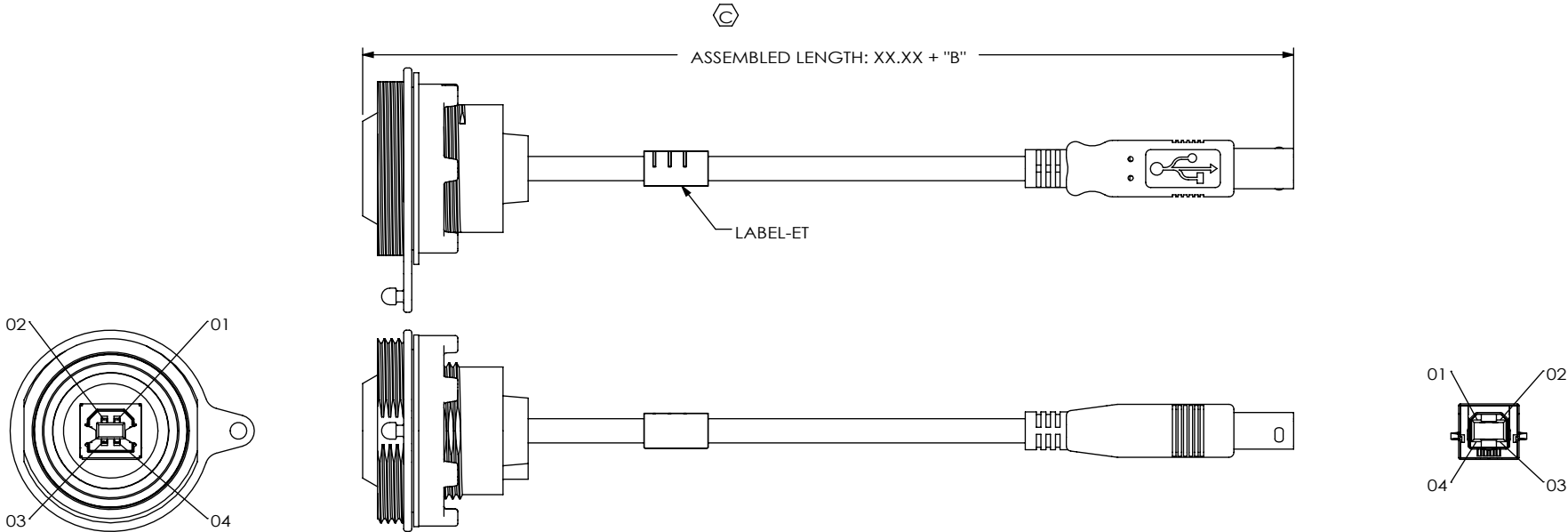


FIG 4  
SCRUS-17-X-00.25-AMS-BC SHOWN  
(SAME AS FIG 1, UNLESS OTHERWISE STATED)

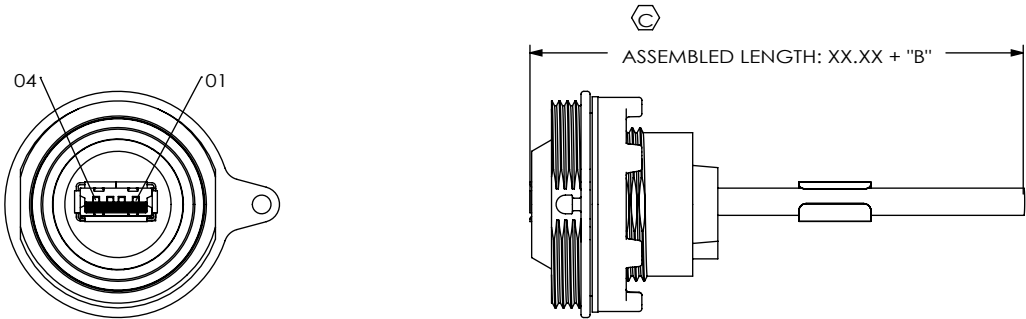


TABLE 2: PIN-OUT						
J1 End		Wire Color	J2 End			
-AMS	-BMS		-AM	-BM	-BC	-MB
01	01	RED	01	01	01	01
02	02	WHITE	02	02	02	02
03	03	GREEN	03	03	03	03
n/a	n/a	NOT CONNECTED	n/a	n/a	n/a	04
04	04	BLACK	04	04	04	05
USB Shield	USB Shield	DRAIN/CABLE SHIELD	USB Shield	USB Shield	USB Shield	USB Shield

F:\DWG\MISC\MKTG\SCRUS-17-X-XX.XX-XXX-XX-MKT.SLDDRW

**PROPRIETARY NOTE**

THIS DOCUMENT CONTAINS CONFIDENTIAL AND PROPRIETARY INFORMATION AND ALL DESIGN, MANUFACTURING, REPRODUCTION, USE, PATENT RIGHTS AND SALES RIGHTS ARE EXPRESSLY RESERVED BY SAMTEC, INC. THIS DOCUMENT SHALL NOT BE DISCLOSED, IN WHOLE OR PART, TO ANY UNAUTHORIZED PERSON OR ENTITY NOR REPRODUCED, TRANSFERRED OR INCORPORATED IN ANY OTHER PROJECT IN ANY MANNER WITHOUT THE EXPRESS WRITTEN CONSENT OF SAMTEC, INC.

DO NOT SCALE DRAWING

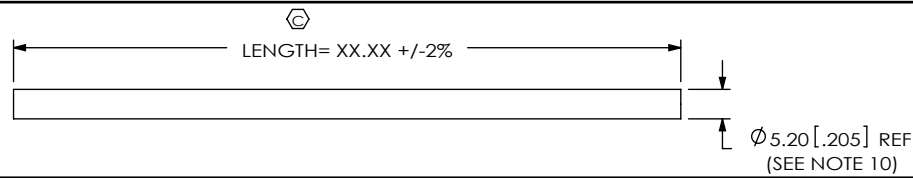
SHEET SCALE: 1:2

520 PARK EAST BLVD, NEW ALBANY, IN 47150  
PHONE: 812-944-6733 FAX: 812-948-5047  
e-Mail info@SAMTEC.com code 55322

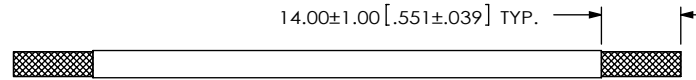
DESCRIPTION:  
PANEL MOUNT SEALED USB CABLE

DWG. NO.  
**SCRUS-17-X-XX.XX-XXX-XX**

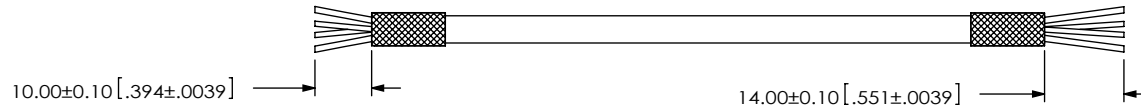
BY: LENNY K 09-01-2010 SHEET 2 OF 15



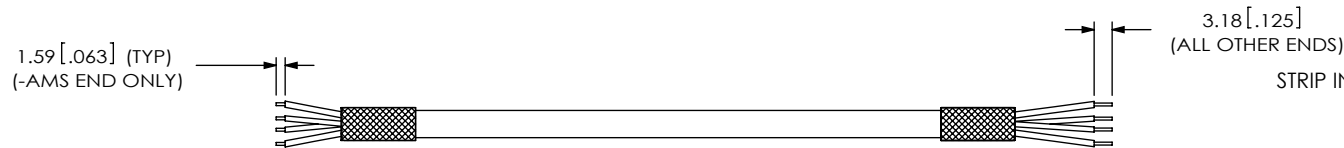
-AMS-AM: END OPTION  
IN-PROCESS 1  
UCA-03-01  
CUT CABLES TO LENGTH



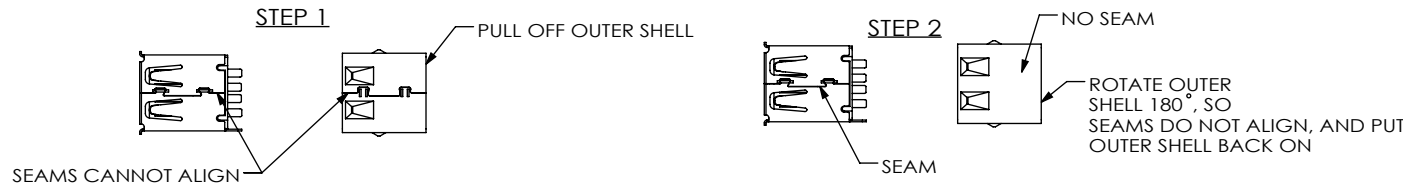
-AMS-AM: END OPTION  
IN-PROCESS 2  
UCA-03-01  
STRIP OUTER JACKET TO DIMENSION SHOWN



-AMS-AM: END OPTION  
IN-PROCESS 3  
FOLD BACK SHIELD & TRIM WIRES TO LENGTH

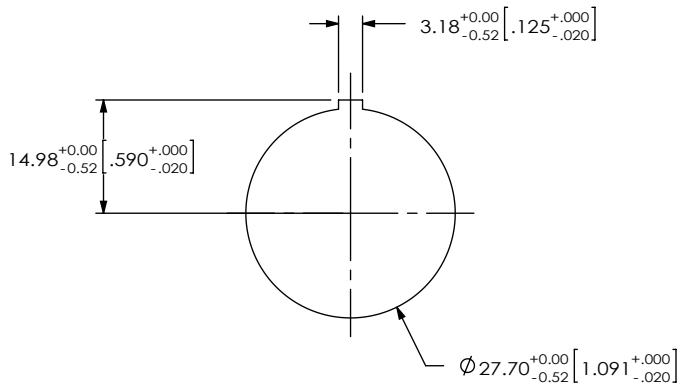


-AMS-AM: END OPTION  
IN-PROCESS 4  
STRIP INDIVIDUAL CABLES TO DIMENSION SHOWN

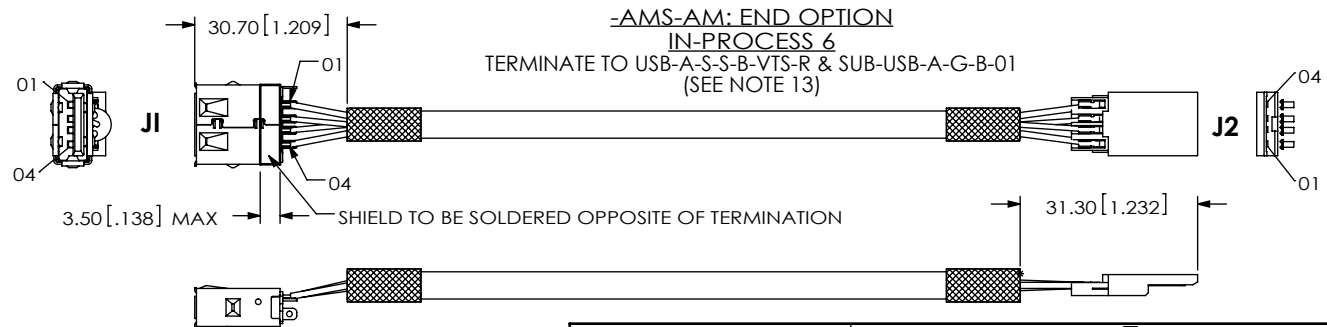


STEP 3  
-AMS-AM: END OPTION  
IN-PROCESS 5  
MODIFY USB-A-S-S-B-VTS-R

RECOMMENDED PANEL HOLE  
(SEE NOTE 5)



F:\DWG\MISC\MKTG\SCRUS-17-X-XX-XX-XXX-XX-MKT.SLDDRW



-AMS-AM: END OPTION  
IN-PROCESS 6  
TERMINATE TO USB-A-S-S-B-VTS-R & SUB-USB-A-G-B-01  
(SEE NOTE 13)

PROPRIETARY NOTE  
THIS DOCUMENT CONTAINS CONFIDENTIAL AND PROPRIETARY INFORMATION AND ALL DESIGN, MANUFACTURING, REPRODUCTION, USE, PATENT RIGHTS AND SALES RIGHTS ARE EXPRESSLY RESERVED BY SAMTEC, INC. THIS DOCUMENT SHALL NOT BE DISCLOSED, IN WHOLE OR PART, TO ANY UNAUTHORIZED PERSON OR ENTITY NOR REPRODUCED, TRANSFERRED OR INCORPORATED IN ANY OTHER PROJECT IN ANY MANNER WITHOUT THE EXPRESS WRITTEN CONSENT OF SAMTEC, INC.

DO NOT SCALE DRAWING

SHEET SCALE: 0.75:1

**samtec**

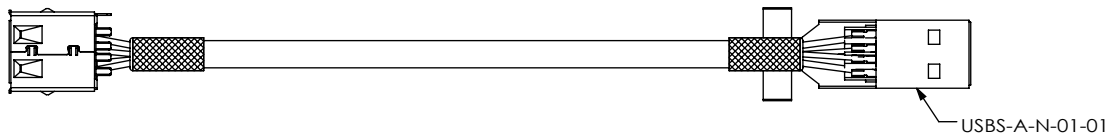
520 PARK EAST BLVD, NEW ALBANY, IN 47150  
PHONE: 812-944-6733 FAX: 812-948-5047  
e-Mail: info@SAMTEC.com code 55322

DESCRIPTION:  
PANEL MOUNT SEALED USB CABLE

DWG. NO.  
SCRUS-17-X-XX-XX-XXX-XX

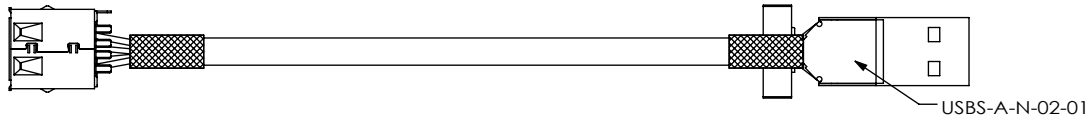
BY: LENNY K 09-01-2010 SHEET 3 OF 15

-AMS-AM: END OPTION  
IN-PROCESS 7  
ADD USB-A-N-01-01 (SEE NOTE 13)



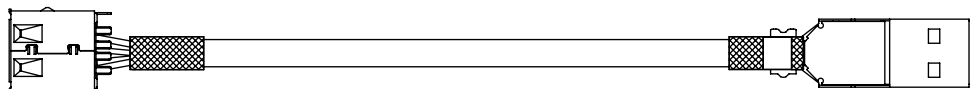
USBS-A-N-01-01

-AMS-AM: END OPTION  
IN-PROCESS 8  
ADD USB-A-N-02-01 (SEE NOTE 13)

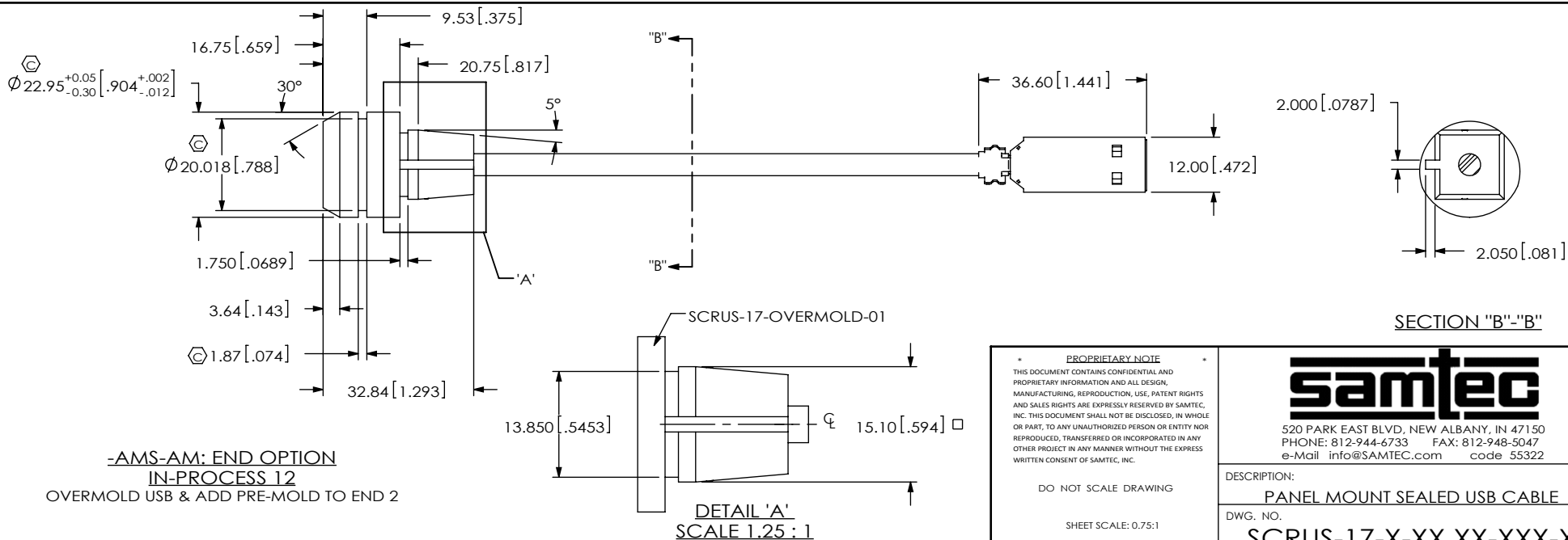
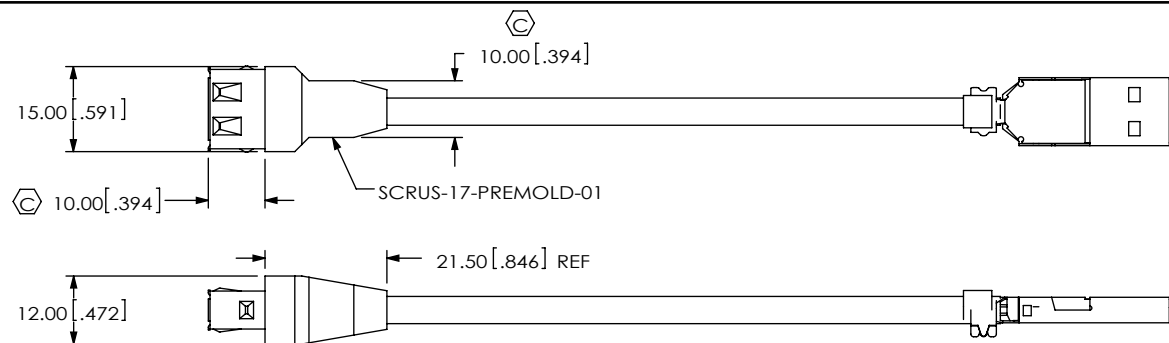


USBS-A-N-02-01

-AMS-AM: END OPTION  
IN-PROCESS 9 & 10  
CRIMP SHELLS OVERBAND  
TRIM SHIELD TAB ON USB-A-S-B-VTS-R



-AMS-AM: END OPTION  
IN-PROCESS 11  
PREMOLD



SECTION "B"-"B"

-AMS-AM: END OPTION  
IN-PROCESS 12  
OVERMOLD USB & ADD PRE-MOLD TO END 2

DETAIL 'A'  
SCALE 1.25 : 1

**PROPRIETARY NOTE**  
THIS DOCUMENT CONTAINS CONFIDENTIAL AND PROPRIETARY INFORMATION AND ALL DESIGN, MANUFACTURING, REPRODUCTION, USE, PATENT RIGHTS AND SALES RIGHTS ARE EXPRESSLY RESERVED BY SAMTEC, INC. THIS DOCUMENT SHALL NOT BE DISCLOSED, IN WHOLE OR PART, TO ANY UNAUTHORIZED PERSON OR ENTITY NOR REPRODUCED, TRANSFERRED OR INCORPORATED IN ANY OTHER PROJECT IN ANY MANNER WITHOUT THE EXPRESS WRITTEN CONSENT OF SAMTEC, INC.

DO NOT SCALE DRAWING

SHEET SCALE: 0.75:1

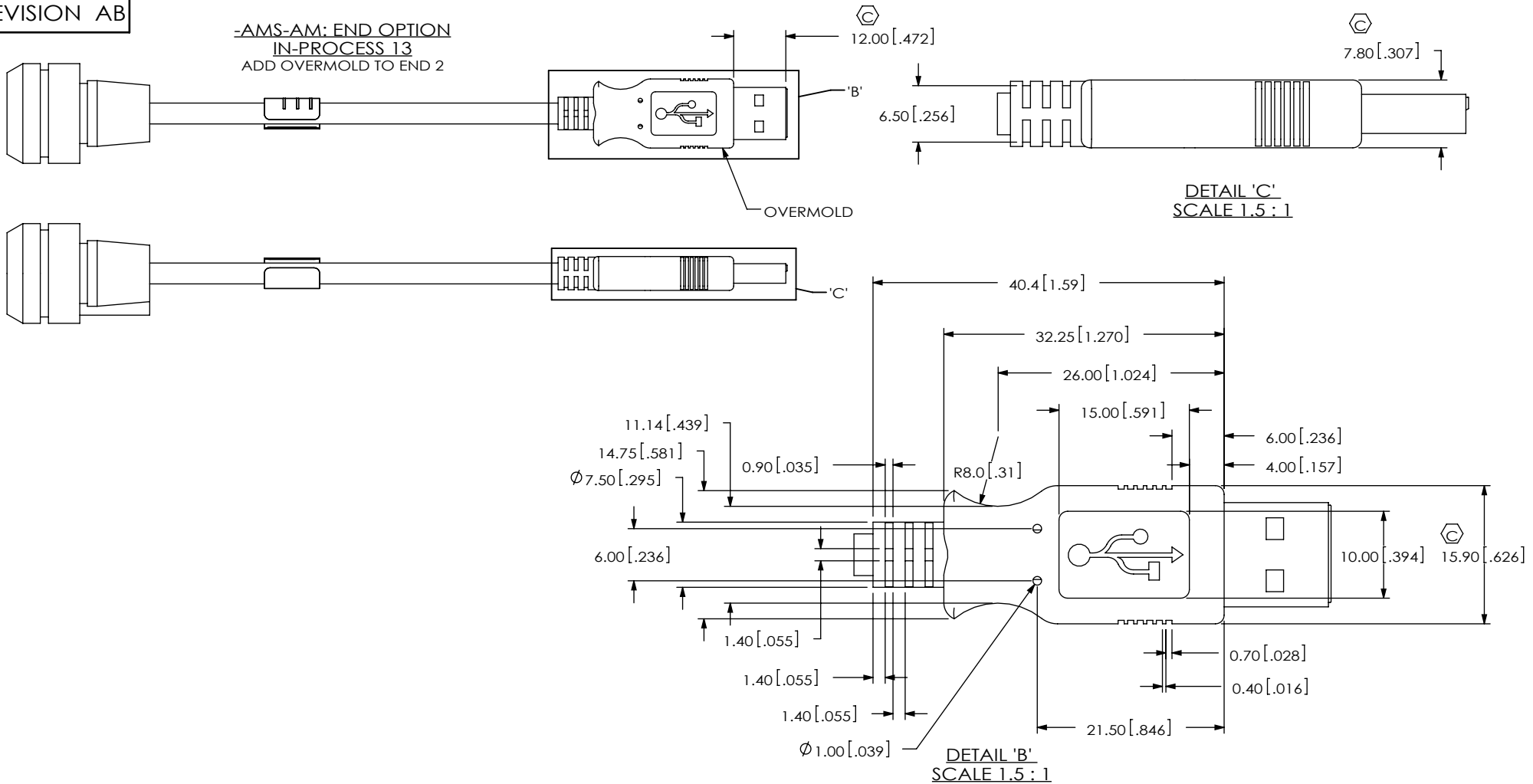
**samtec**

520 PARK EAST BLVD, NEW ALBANY, IN 47150  
PHONE: 812-944-6733 FAX: 812-948-5047  
e-Mail info@SAMTEC.com code 55322

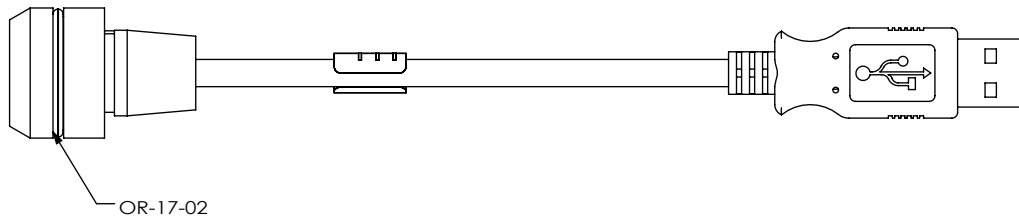
DESCRIPTION:  
PANEL MOUNT SEALED USB CABLE

DWG. NO.  
SCRUS-17-X-XX.XX-XXX-XX

BY: LENNY K 09-01-2010 SHEET 4 OF 15



-AMS-AM: END OPTION  
N-PROCESS 14  
ADD OR-17-02



\* **PROPRIETARY NOTE**  
THIS DOCUMENT CONTAINS CONFIDENTIAL AND  
PROPRIETARY INFORMATION AND ALL DESIGN,  
MANUFACTURING, REPRODUCTION, USE, PATENT RIGHTS  
AND SALES RIGHTS ARE EXPRESSLY RESERVED BY SAMTEC  
INC. THIS DOCUMENT SHALL NOT BE DISCLOSED, IN WHOLLE  
OR PART, TO ANY UNAUTHORIZED PERSON OR ENTITY NOR  
REPRODUCED, TRANSFERRED OR INCORPORATED IN ANY  
OTHER PROJECT IN ANY MANNER WITHOUT THE EXPRESS  
WRITTEN CONSENT OF SAMTEC, INC.

DO NOT SCALE DRAWING

SHEET SCALE: 0.75:1

**samtec**

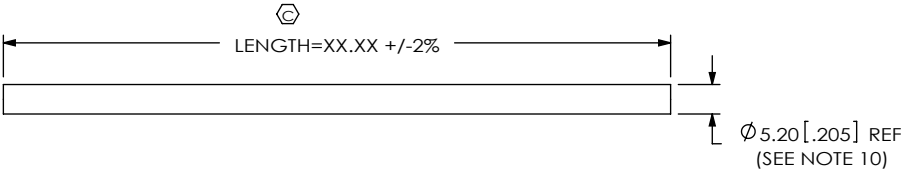
520 PARK EAST BLVD, NEW ALBANY, IN 47150  
PHONE: 812-944-6733 FAX: 812-948-5047  
e-Mail [info@SAMTEC.com](mailto:info@SAMTEC.com) code 55322

DESCRIPTION:  
PANEL MOUNT SEALED USB CABLE

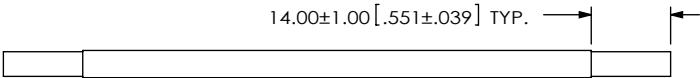
DWG. NO. **SCRUS-17-X-XX.XX-XXX-XX**

BY: LENNY K	09-01-2010	SHEET 5 OF 15
-------------	------------	---------------

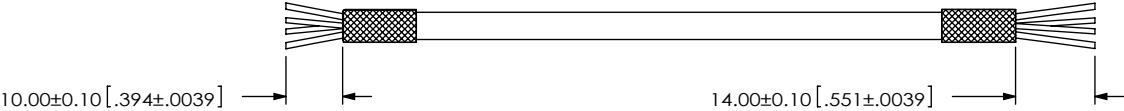
-BMS-BM: END OPTION  
IN-PROCESS 1  
UCA-03-01  
CUT CABLES TO LENGTH



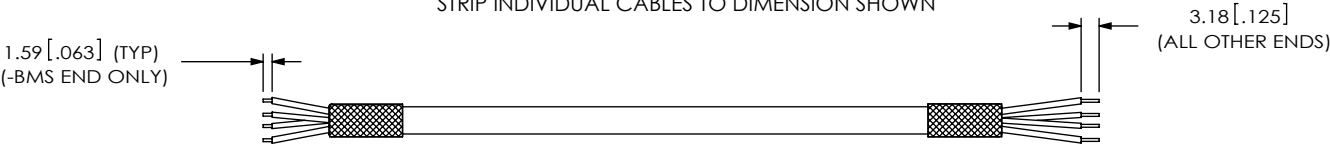
-BMS-BM: END OPTION  
IN-PROCESS 2  
UCA-03-01  
STRIP OUTER JACKET TO DIMENSION SHOWN



-BMS-BM: END OPTION  
IN-PROCESS 3  
FOLD BACK SHIELD & TRIM WIRES TO LENGTH



-BMS-BM: END OPTION  
IN-PROCESS 4  
STRIP INDIVIDUAL CABLES TO DIMENSION SHOWN



PROPRIETARY NOTE  
THIS DOCUMENT CONTAINS CONFIDENTIAL AND PROPRIETARY INFORMATION AND ALL DESIGN, MANUFACTURING, REPRODUCTION, USE, PATENT RIGHTS AND SALES RIGHTS ARE EXPRESSLY RESERVED BY SAMTEC, INC. THIS DOCUMENT SHALL NOT BE DISCLOSED, IN WHOLE OR PART, TO ANY UNAUTHORIZED PERSON OR ENTITY NOR REPRODUCED, TRANSFERRED OR INCORPORATED IN ANY OTHER PROJECT IN ANY MANNER WITHOUT THE EXPRESS WRITTEN CONSENT OF SAMTEC, INC.

DO NOT SCALE DRAWING

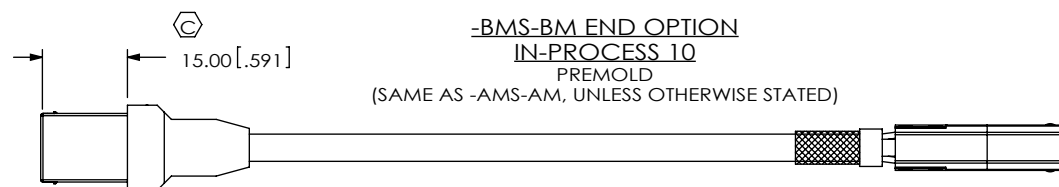
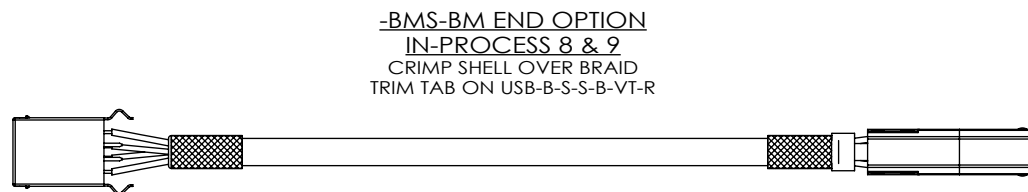
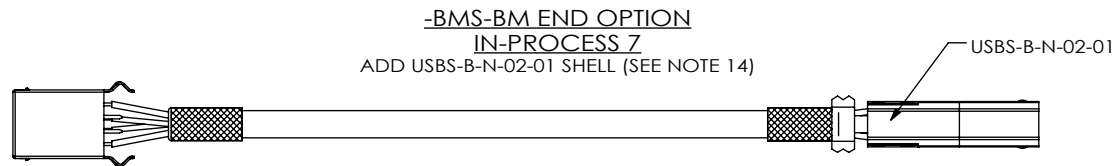
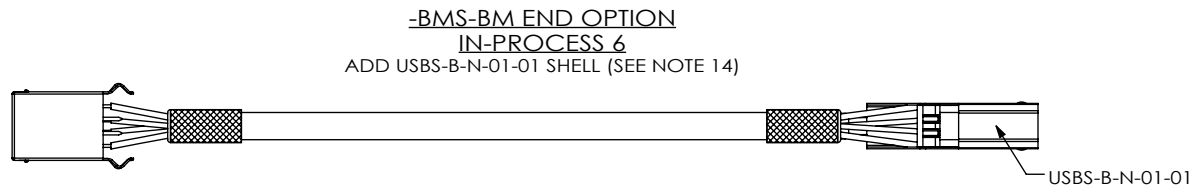
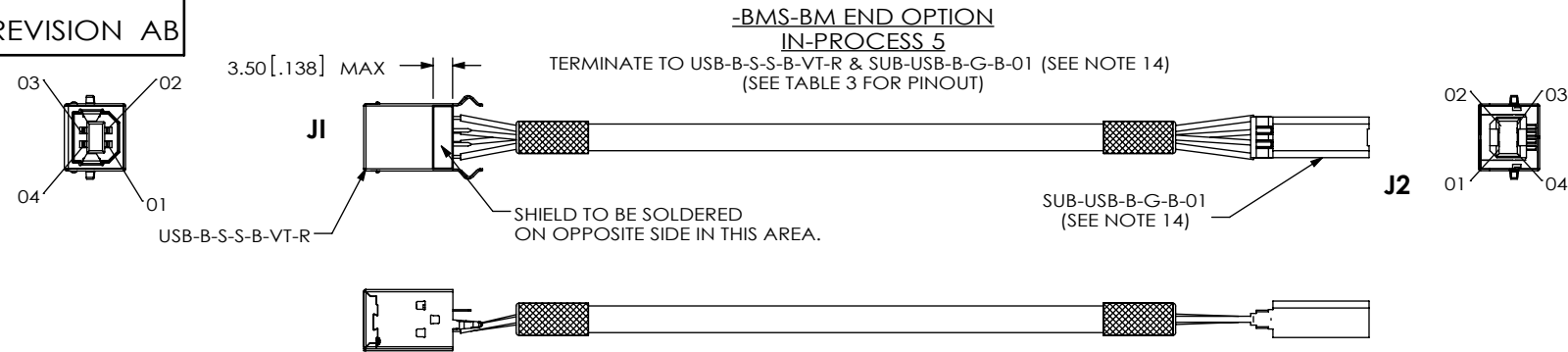
SHEET SCALE: 0.75:1



520 PARK EAST BLVD, NEW ALBANY, IN 47150  
PHONE: 812-944-6733 FAX: 812-948-5047  
e-Mail info@SAMTEC.com code 55322

DESCRIPTION:  
PANEL MOUNT SEALED USB CABLE  
DWG. NO.  
SCRUS-17-X-XX.XX-XXX-XX

BY: LENNY K 09-01-2010 SHEET 6 OF 15



\* PROPRIETARY NOTE \*

THIS DOCUMENT CONTAINS CONFIDENTIAL AND PROPRIETARY INFORMATION AND ALL DESIGN, MANUFACTURING, REPRODUCTION, USE, PATENT RIGHTS AND SALES RIGHTS ARE EXPRESSLY RESERVED BY SAMTEC, INC. THIS DOCUMENT SHALL NOT BE DISCLOSED, IN WHOLE OR PART, TO ANY UNAUTHORIZED PERSON OR ENTITY NOR REPRODUCED, TRANSFERRED OR INCORPORATED IN ANY OTHER PROJECT IN ANY MANNER WITHOUT THE EXPRESS WRITTEN CONSENT OF SAMTEC, INC.

DO NOT SCALE DRAWING

SHEET SCALE: 1:2



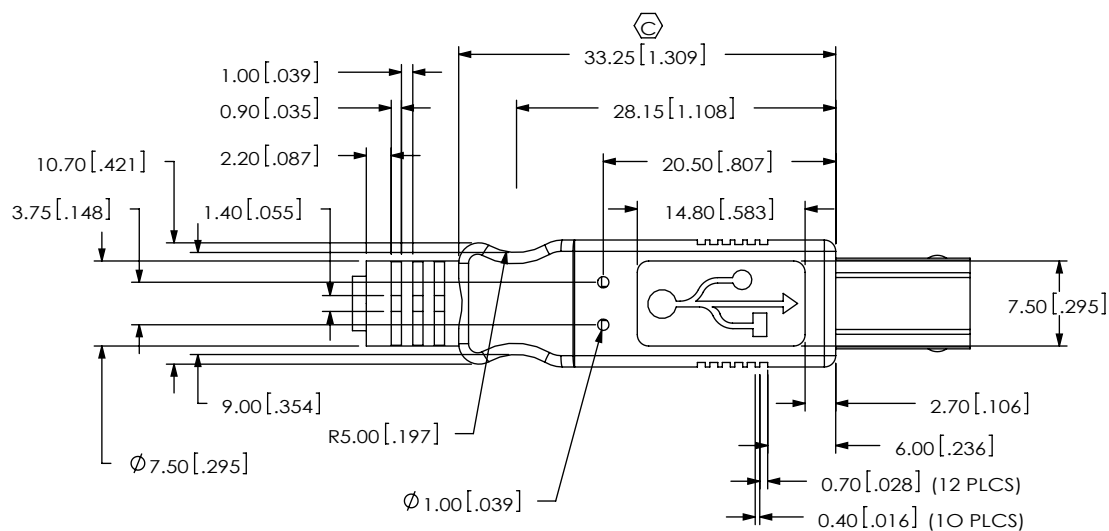
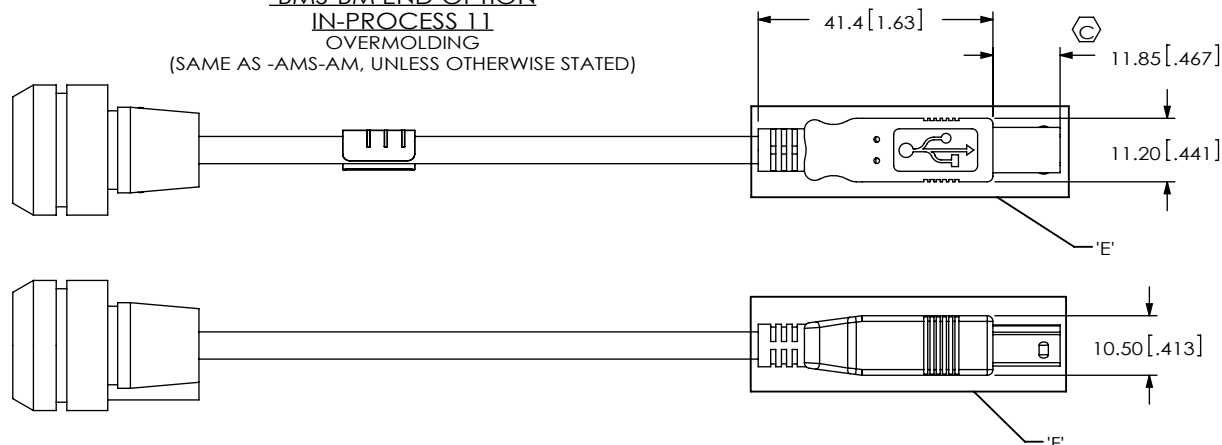
520 PARK EAST BLVD, NEW ALBANY, IN 47150  
PHONE: 812-944-6733 FAX: 812-948-5047  
e-Mail info@SAMTEC.com code 55322

DESCRIPTION:  
PANEL MOUNT SEALED USB CABLE

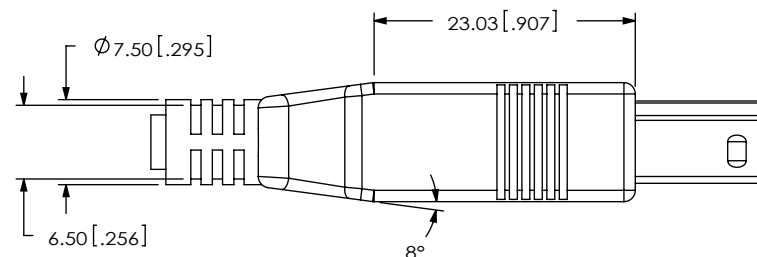
DWG. NO.  
SCRUS-17-X-XX.XX-XXX-XX

BY: LENNY K 09-01-2010 SHEET 7 OF 15

-BMS-BM END OPTION  
IN-PROCESS 11  
 OVERMOLDING  
 (SAME AS -AMS-AM, UNLESS OTHERWISE STATED)

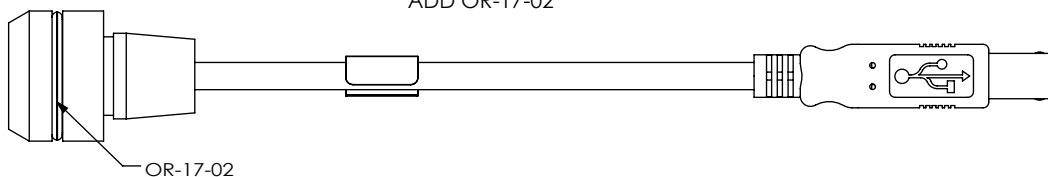


DETAIL 'E'  
SCALE 1.5 : 1



DETAIL 'F'  
SCALE 1.5 : 1

-BMS-BM END OPTION  
IN-PROCESS 12  
 ADD OR-17-02



**PROPRIETARY NOTE**  
 \* THIS DOCUMENT CONTAINS CONFIDENTIAL AND PROPRIETARY INFORMATION AND ALL DESIGN, MANUFACTURING, REPRODUCTION, USE, PATENT RIGHTS AND SALES RIGHTS ARE EXPRESSLY RESERVED BY SAMTEC, INC. THIS DOCUMENT SHALL NOT BE DISCLOSED, IN WHOLE OR PART, TO ANY UNAUTHORIZED PERSON OR ENTITY NOR REPRODUCED, TRANSFERRED OR INCORPORATED IN ANY OTHER PROJECT IN ANY MANNER WITHOUT THE EXPRESS WRITTEN CONSENT OF SAMTEC, INC.

DO NOT SCALE DRAWING

SHEET SCALE: 1:2

**samtec**

520 PARK EAST BLVD, NEW ALBANY, IN 47150  
 PHONE: 812-944-6733 FAX: 812-948-5047  
 e-Mail: info@SAMTEC.com code 55322

DESCRIPTION: PANEL MOUNT SEALED USB CABLE

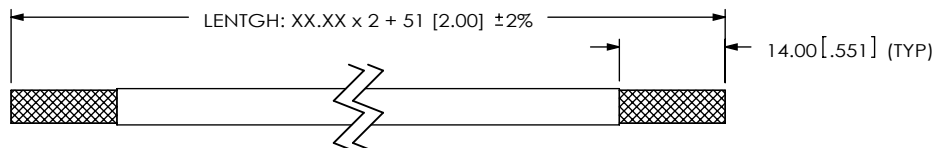
DWG. NO. **SCRUS-17-X-XX.XX-XXX-XX**

BY: LENNY K 09-01-2010 SHEET 8 OF 15



REVISION AB

-BMS-BC: END OPTION  
IN-PROCESS 1  
CUT CABLES TO LENGTH & STRIP OUTER  
JACKET TO DIMENSION SHOWN



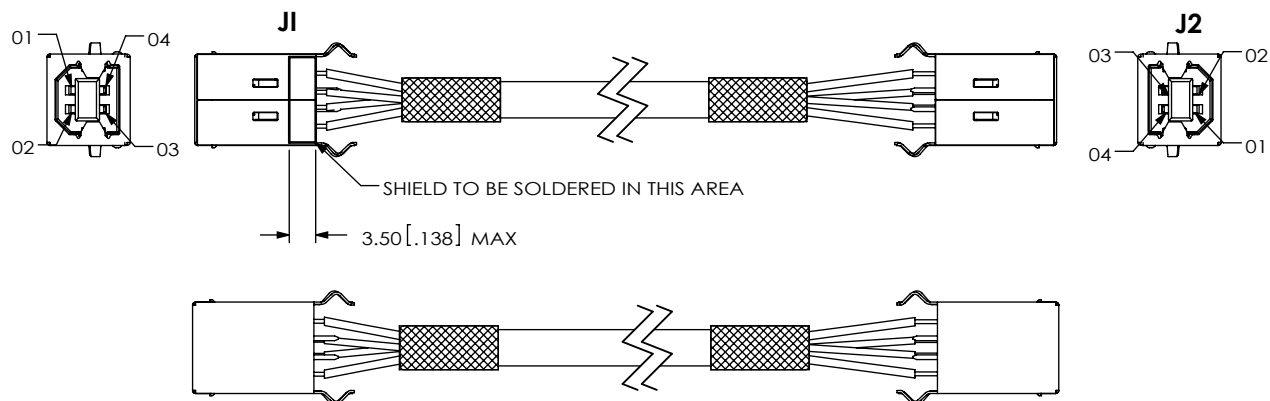
-BMS-BC: END OPTION  
IN-PROCESS 2  
FOLD BACK SHIELD & TRIM WIRES TO  
DIMENSION SHOWN



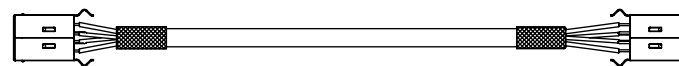
-BMS-BC: END OPTION  
IN-PROCESS 3  
STRIP INDIVIDUAL WIRES TO DIMENSION SHOWN



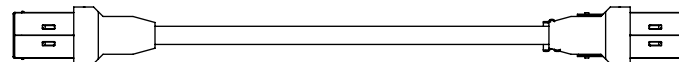
-BMS-BC: END OPTION  
IN-PROCESS 4  
TERMINATE TO USB-B-X-X-VTS-X  
(SEE NOTE 14) (SEE TABLE 2 FOR PIN OUT)



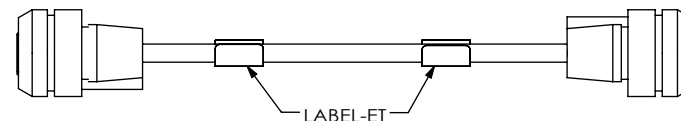
-BMS-BC: END OPTION  
IN-PROCESS 5  
CLIP TABS ON USB-B-S-X-X-VT-X



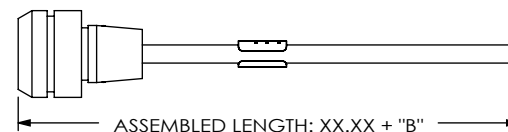
-BMS-BC: END OPTION  
IN-PROCESS 6  
ADD PREMOLD



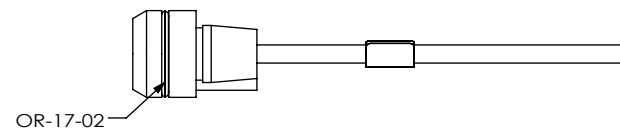
-BMS-BC: END OPTION  
IN-PROCESS 7  
ADD OVERMOLD



BMS-BC: END OPTION  
IN-PROCESS 8  
CUT IN HALF AND TRIM TO LENGTH



BMS-BC: END OPTION  
IN-PROCESS 9  
ADD O-RING



**PROPRIETARY NOTE**  
THIS DOCUMENT CONTAINS CONFIDENTIAL AND  
PROPRIETARY INFORMATION AND ALL DESIGN,  
MANUFACTURING, REPRODUCTION, USE, PATENT RIGHTS  
AND SALES RIGHTS ARE EXPRESSLY RESERVED BY SAMTEC,  
INC. THIS DOCUMENT SHALL NOT BE DISCLOSED, IN WHOLE  
OR PART, TO ANY UNAUTHORIZED PERSON OR ENTITY NOR  
REPRODUCED, TRANSFERRED OR INCORPORATED IN ANY  
OTHER PROJECT IN ANY MANNER WITHOUT THE EXPRESS  
WRITTEN CONSENT OF SAMTEC, INC.

DO NOT SCALE DRAWING

SHEET SCALE: 1:1

**samtec**

520 PARK EAST BLVD, NEW ALBANY, IN 47150  
PHONE: 812-944-6733 FAX: 812-948-5047  
e-Mail info@SAMTEC.com code 55322

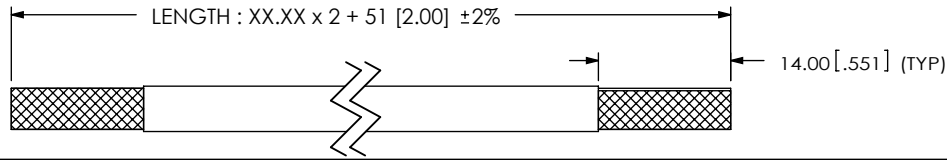
DESCRIPTION:  
PANEL MOUNT SEALED USB CABLE

DWG. NO.  
**SCRUS-17-X-XX.XX-XXX-XX**

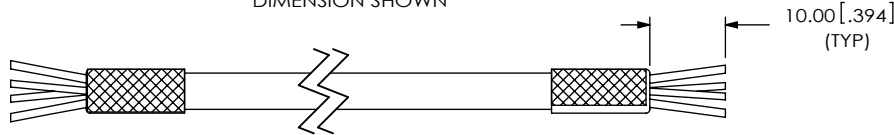
BY: LENNY K 09-01-2010 SHEET 9 OF 15

REVISION AB

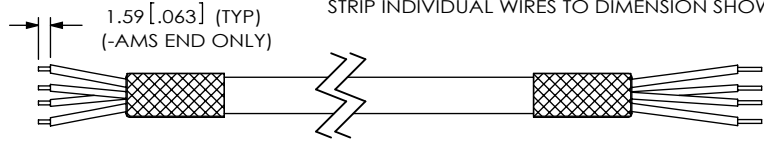
-AMS-BC: END OPTION  
IN-PROCESS 1  
CUT CABLES TO LENGTH & STRIP OUTER  
JACKET TO DIMENSION SHOWN



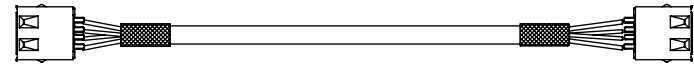
-AMS-BC: END OPTION  
IN-PROCESS 2  
FOLD BACK SHIELD & TRIM WIRES TO  
DIMENSION SHOWN



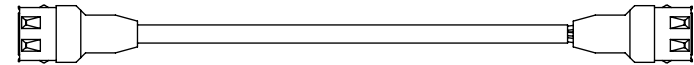
-AMS-BC: END OPTION  
IN-PROCESS 3  
STRIP INDIVIDUAL WIRES TO DIMENSION SHOWN



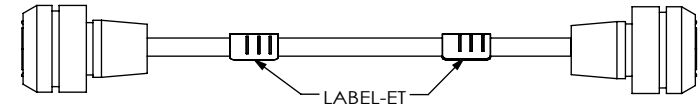
AMS-BC: END OPTION  
IN-PROCESS 6  
CLIP TABS ON USB-A-S-S-B-VTS-R



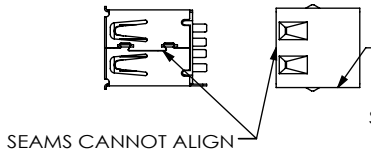
AMS-BC: END OPTION  
IN-PROCESS 7  
ADD PREMOLD



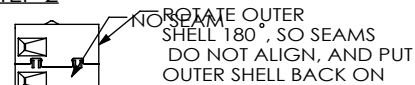
AMS-BC: END OPTION  
IN-PROCESS 8  
ADD OVERMOLD



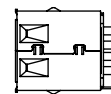
STEP 1



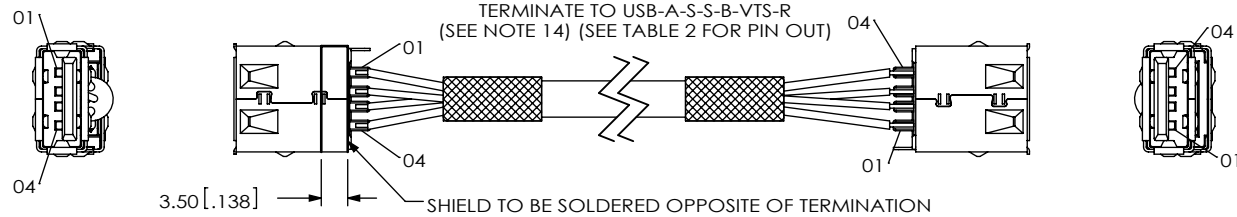
STEP 2



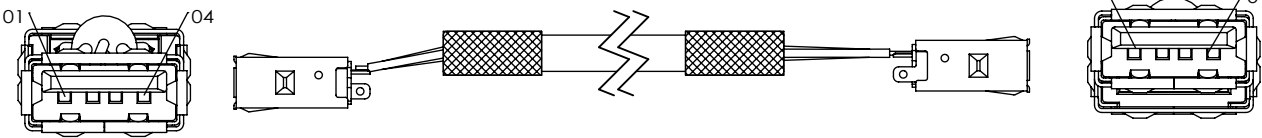
STEP 3



-AMS-BC: END OPTION  
IN-PROCESS 4  
MODIFY USB-A-S-S-B-VTS-R



-AMS-BC: END OPTION  
IN-PROCESS 5  
TERMINATE TO USB-A-S-S-B-VTS-R  
(SEE NOTE 14) (SEE TABLE 2 FOR PIN OUT)

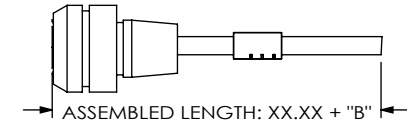


SCALE 1.5:1  
FOR CLARITY

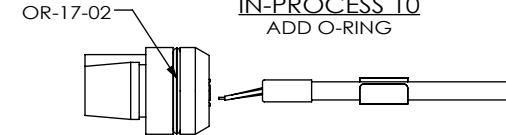
SCALE 1.5:1  
FOR CLARITY

F:\DWG\MISC\MKTG\SCRUS-17-X-XX.XX-XXX-XX-MKT.SLDDRW

AMS-BC: END OPTION  
IN-PROCESS 9  
CUT IN HALF AND TRIM TO LENGTH



AMS-BC: END OPTION  
IN-PROCESS 10  
ADD O-RING



**PROPRIETARY NOTE**  
THIS DOCUMENT CONTAINS CONFIDENTIAL AND  
PROPRIETARY INFORMATION AND ALL DESIGN,  
MANUFACTURING, REPRODUCTION, USE, PATENT RIGHTS  
AND SALES RIGHTS ARE EXPRESSLY RESERVED BY SAMTEC,  
INC. THIS DOCUMENT SHALL NOT BE DISCLOSED, IN WHOLE  
OR PART, TO ANY UNAUTHORIZED PERSON OR ENTITY NOR  
REPRODUCED, TRANSFERRED OR INCORPORATED IN ANY  
OTHER PROJECT IN ANY MANNER WITHOUT THE EXPRESS  
WRITTEN CONSENT OF SAMTEC, INC.

DO NOT SCALE DRAWING

SHEET SCALE: 1:1.33333

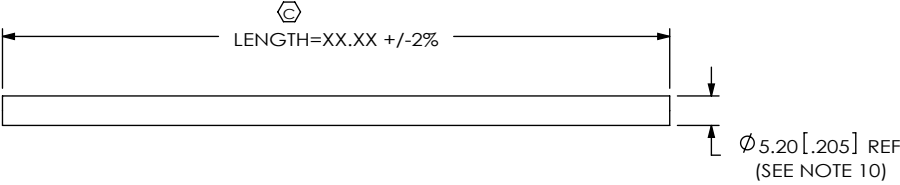
**samtec**

520 PARK EAST BLVD, NEW ALBANY, IN 47150  
PHONE: 812-944-6733 FAX: 812-948-5047  
e-Mail: info@SAMTEC.com code 55322

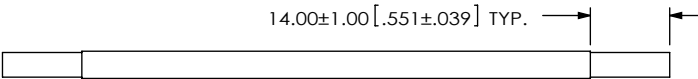
DESCRIPTION:  
PANEL MOUNT SEALED USB CABLE

DWG. NO.  
**SCRUS-17-X-XX.XX-XXX-XX**

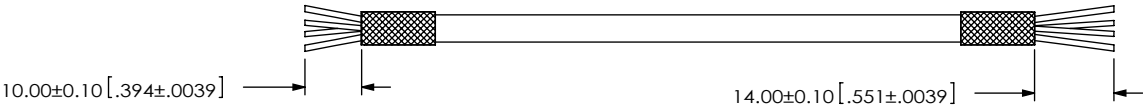
BY: LENNY K 09-01-2010 SHEET 10 OF 15



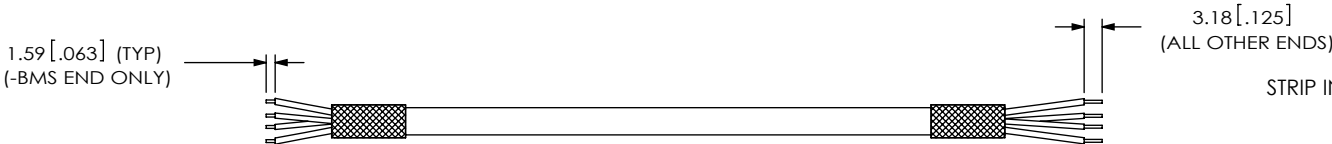
-BMS-AM: END OPTION  
IN-PROCESS 1  
UCA-03-01  
CUT CABLES TO LENGTH



-BMS-AM: END OPTION  
IN-PROCESS 2  
UCA-03-01  
STRIP OUTER JACKET TO DIMENSION SHOWN

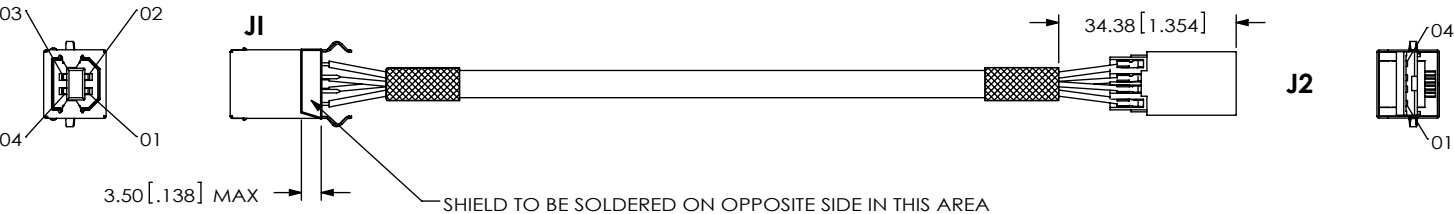


-BMS-AM: END OPTION  
IN-PROCESS 3  
FOLD BACK SHIELD & TRIM WIRES TO LENGTH

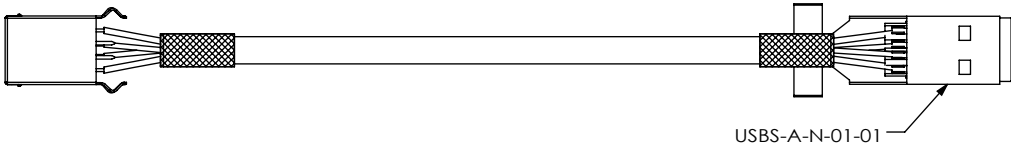


-BMS-AM: END OPTION  
IN-PROCESS 4  
STRIP INDIVIDUAL CABLES TO DIMENSION SHOWN

-BMS-AM: END OPTION  
IN-PROCESS 5  
TERMINATE TO USB-B-S-S-B-VT-R & SUB-USB-A-G-B-01



-BMS-AM: END OPTION  
IN-PROCESS 6  
ADD USB-A-N-01-01 (SEE NOTE 13)



**PROPRIETARY NOTE**  
THIS DOCUMENT CONTAINS CONFIDENTIAL AND PROPRIETARY INFORMATION AND ALL DESIGN, MANUFACTURING, REPRODUCTION, USE, PATENT RIGHTS AND SALES RIGHTS ARE EXPRESSLY RESERVED BY SAMTEC, INC. THIS DOCUMENT SHALL NOT BE DISCLOSED, IN WHOLE OR PART, TO ANY UNAUTHORIZED PERSON OR ENTITY NOR REPRODUCED, TRANSFERRED OR INCORPORATED IN ANY OTHER PROJECT IN ANY MANNER WITHOUT THE EXPRESS WRITTEN CONSENT OF SAMTEC, INC.

DO NOT SCALE DRAWING

SHEET SCALE: 0.75:1



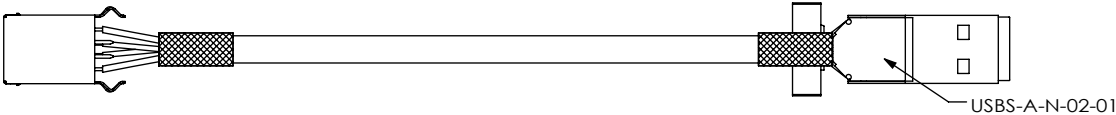
520 PARK EAST BLVD, NEW ALBANY, IN 47150  
PHONE: 812-944-6733 FAX: 812-948-5047  
e-Mail: info@SAMTEC.com code 55322

DESCRIPTION:  
PANEL MOUNT SEALED USB CABLE

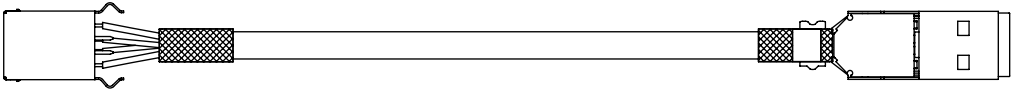
DWG. NO.  
SCRUS-17-X-XX.XX-XXX-XX

BY: LENNY K 09-01-2010 SHEET 11 OF 15

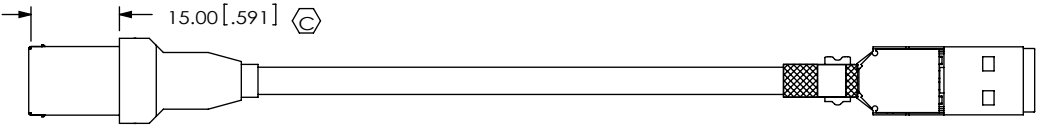
-BMS-AM: END OPTION  
IN-PROCESS 7  
ADD USBS-A-N-02-01 (SEE NOTE 13)



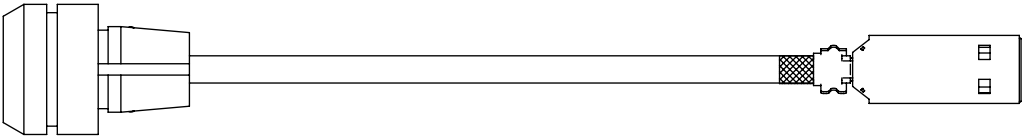
-BMS-AM: END OPTION  
IN-PROCESS 8 & 9  
CRIMP SHELLS OVERBAND  
TRIM SHIELD TAB ON USB-B-S-S-B-VT-R



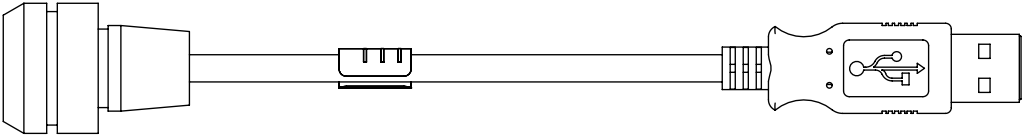
-BMS-AM: END OPTION  
IN-PROCESS 10  
PREMOLD  
(SAME AS -AMS-AM, UNLESS OTHERWISE NOTED)



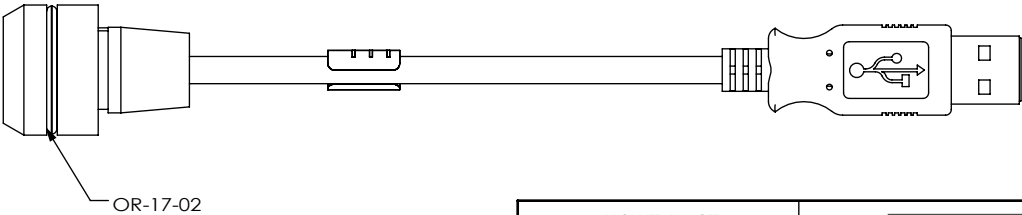
-BMS-AM: END OPTION  
IN-PROCESS 11  
OVERMOLD USB  
(SAME AS -AMS-AM, UNLESS OTHERWISE NOTED)



-BMS-AM: END OPTION  
IN-PROCESS 12  
ADD OVERMOLD TO END 2  
(SAME AS -AMS-AM, UNLESS OTHERWISE NOTED)



-BMS-AM: END OPTION  
IN-PROCESS 13  
ADD OR-17-02



\* PROPRIETARY NOTE \*

THIS DOCUMENT CONTAINS CONFIDENTIAL AND PROPRIETARY INFORMATION AND ALL DESIGN, MANUFACTURING, REPRODUCTION, USE, PATENT RIGHTS AND SALES RIGHTS ARE EXPRESSLY RESERVED BY SAMTEC, INC. THIS DOCUMENT SHALL NOT BE DISCLOSED, IN WHOLE OR PART, TO ANY UNAUTHORIZED PERSON OR ENTITY NOR REPRODUCED, TRANSFERRED OR INCORPORATED IN ANY OTHER PROJECT IN ANY MANNER WITHOUT THE EXPRESS WRITTEN CONSENT OF SAMTEC, INC.

DO NOT SCALE DRAWING

SHEET SCALE: 0.75:1

**samtec**

520 PARK EAST BLVD, NEW ALBANY, IN 47150  
PHONE: 812-944-6733 FAX: 812-948-5047  
e-Mail info@SAMTEC.com code 55322

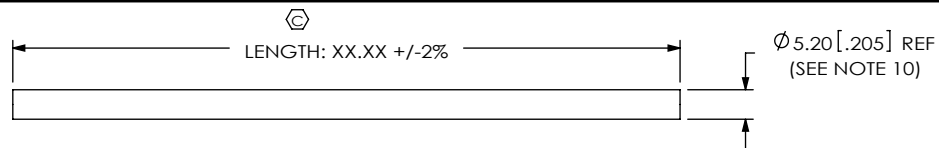
DESCRIPTION:  
PANEL MOUNT SEALED USB CABLE

DWG. NO.  
SCRUS-17-X-XX.XX-XXX-XX

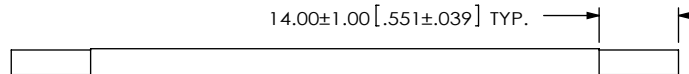
BY: LENNY K 09-01-2010 SHEET 12 OF 15

REVISION AB

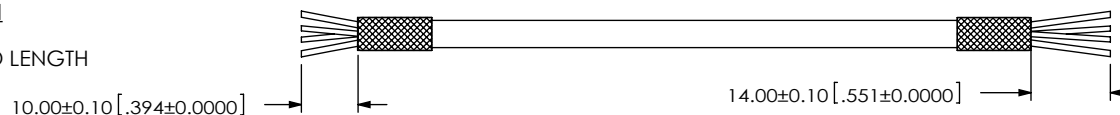
-AMS-BM: END OPTION  
IN-PROCESS 1  
UCA-03-01  
CUT CABLES TO LENGTH



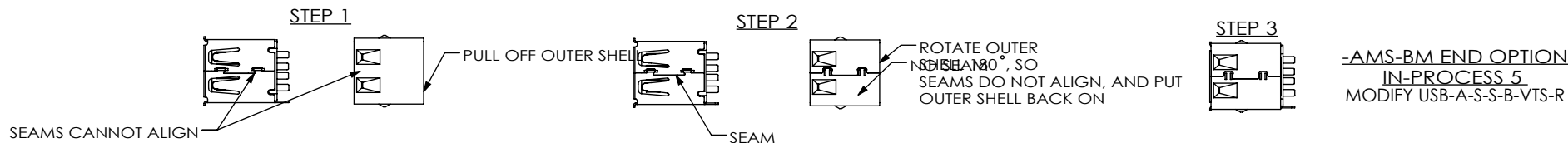
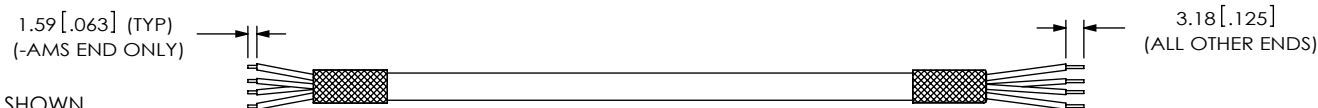
-AMS-BM: END OPTION  
IN-PROCESS 2  
UCA-03-01  
STRIP OUTER JACKET TO DIMENSION SHOWN



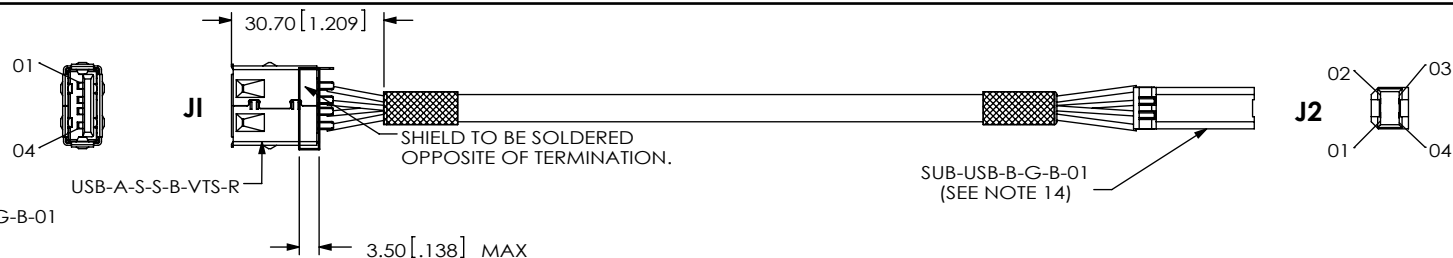
-AMS-BM: END OPTION  
IN-PROCESS 3  
FOLD BACK SHIELD & TRIM WIRES TO LENGTH



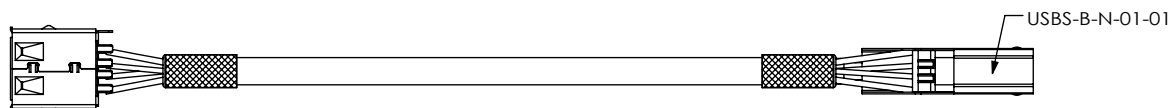
-AMS-BM: END OPTION  
IN-PROCESS 4  
STRIP INDIVIDUAL CABLES TO DIMENSION SHOWN



-AMS-BM END OPTION  
IN-PROCESS 6  
TERMINATE TO USB-A-S-S-B-VTS-R & SUB-USB-B-G-B-01  
(SEE NOTE 14)  
(SEE TABLE 3 FOR PINOUT)



-AMS-BM END OPTION  
IN-PROCESS 7  
ADD USBS-B-N-01-01 SHELL (SEE NOTE 14)



**PROPRIETARY NOTE**  
THIS DOCUMENT CONTAINS CONFIDENTIAL AND PROPRIETARY INFORMATION AND ALL DESIGN, MANUFACTURING, REPRODUCTION, USE, PATENT RIGHTS AND SALES RIGHTS ARE EXPRESSLY RESERVED BY SAMTEC, INC. THIS DOCUMENT SHALL NOT BE DISCLOSED, IN WHOLE OR PART, TO ANY UNAUTHORIZED PERSON OR ENTITY NOR REPRODUCED, TRANSFERRED OR INCORPORATED IN ANY OTHER PROJECT IN ANY MANNER WITHOUT THE EXPRESS WRITTEN CONSENT OF SAMTEC, INC.

DO NOT SCALE DRAWING

SHEET SCALE: 0.75:1

**samtec**

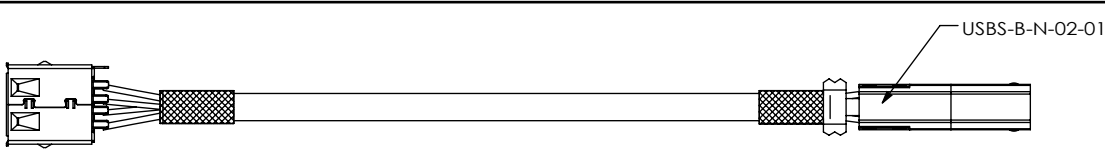
520 PARK EAST BLVD, NEW ALBANY, IN 47150  
PHONE: 812-944-6733 FAX: 812-948-5047  
e-Mail: info@SAMTEC.com code 55322

DESCRIPTION:  
PANEL MOUNT SEALED USB CABLE

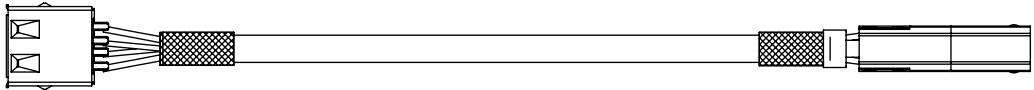
DWG. NO.  
**SCRUS-17-X-XX.XX-XXX-XX**

BY: LENNY K 09-01-2010 SHEET 13 OF 15

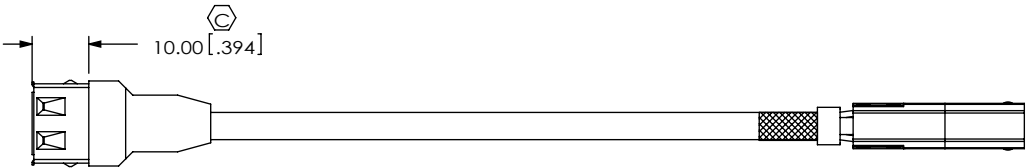
-AMS-BM END OPTION  
IN-PROCESS 8  
ADD USBS-B-N-02-01 SHELL (SEE NOTE 14)



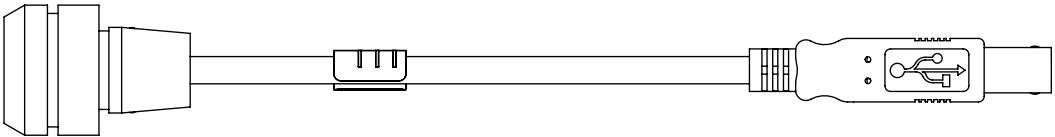
-AMS-BM END OPTION  
IN-PROCESS 9 & 10  
CRIMP SHELL OVER BRAID  
TRIM TAB ON USB-A-S-S-B-VTS-R



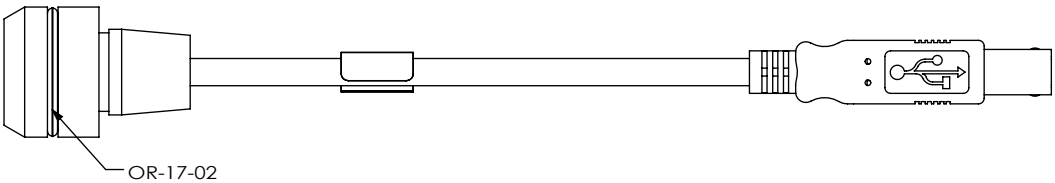
-AMS-BM END OPTION  
IN-PROCESS 11  
PREMOLD  
(SAME AS -BMS-BM, UNLESS OTHERWISE STATED)



-AMS-BM END OPTION  
IN-PROCESS 12  
OVERMOLDING  
(SAME AS -BMS-BM, UNLESS OTHERWISE STATED)



-AMS-BM END OPTION  
IN-PROCESS 13  
ADD OR-17-02



\* PROPRIETARY NOTE \*

THIS DOCUMENT CONTAINS CONFIDENTIAL AND PROPRIETARY INFORMATION AND ALL DESIGN, MANUFACTURING, REPRODUCTION, USE, PATENT RIGHTS AND SALES RIGHTS ARE EXPRESSLY RESERVED BY SAMTEC, INC. THIS DOCUMENT SHALL NOT BE DISCLOSED, IN WHOLE OR PART, TO ANY UNAUTHORIZED PERSON OR ENTITY NOR REPRODUCED, TRANSFERRED OR INCORPORATED IN ANY OTHER PROJECT IN ANY MANNER WITHOUT THE EXPRESS WRITTEN CONSENT OF SAMTEC, INC.

DO NOT SCALE DRAWING

SHEET SCALE: 1:2

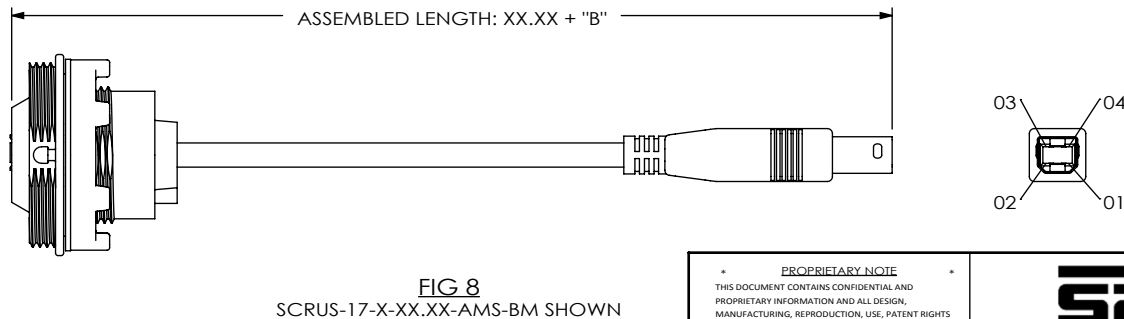
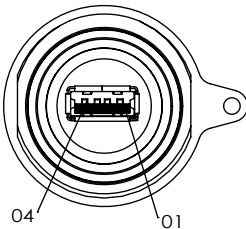
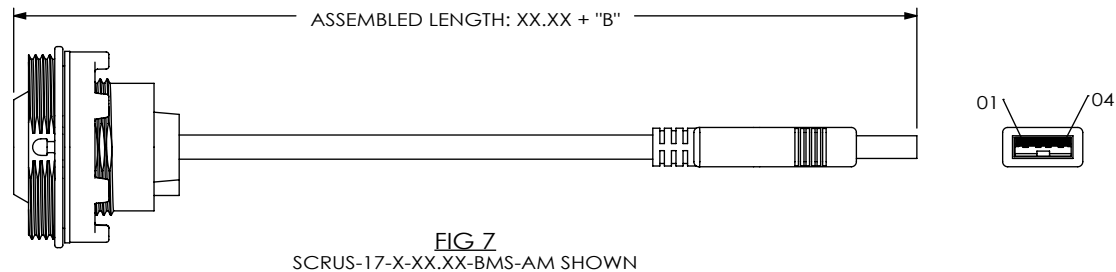
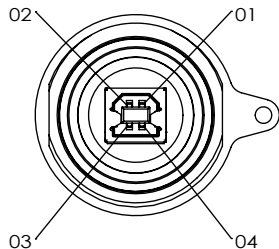
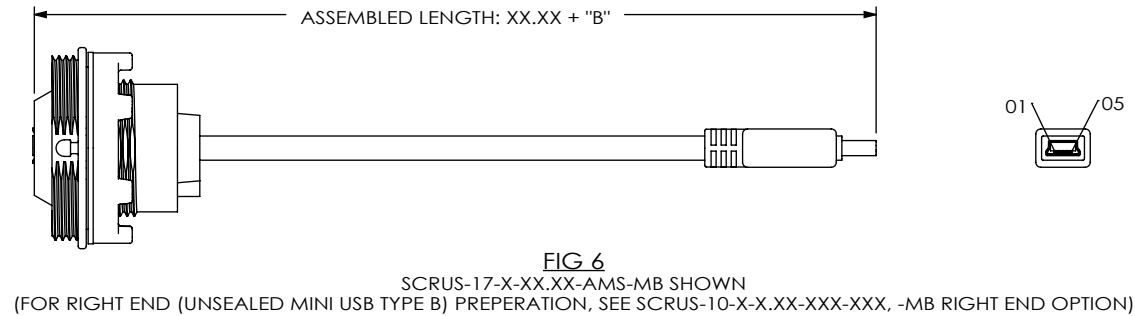
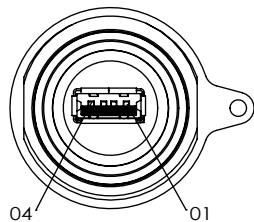
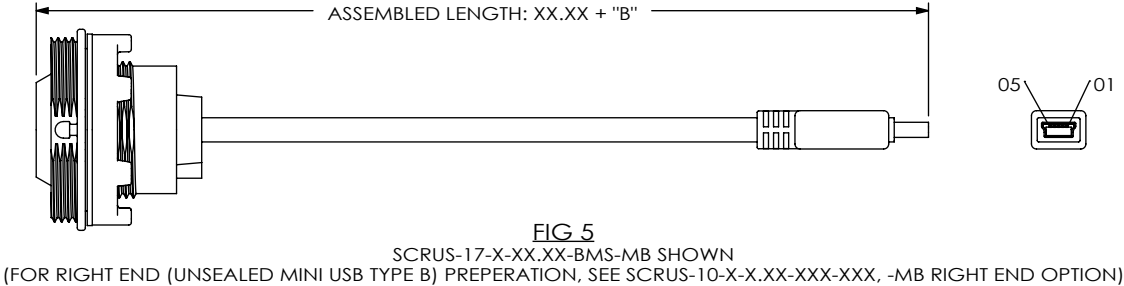
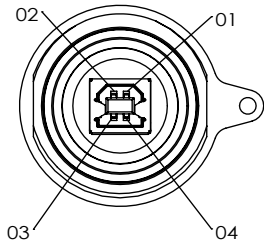


520 PARK EAST BLVD, NEW ALBANY, IN 47150  
PHONE: 812-944-6733 FAX: 812-948-5047  
e-Mail info@SAMTEC.com code 55322

DESCRIPTION:  
PANEL MOUNT SEALED USB CABLE

DWG. NO.  
SCRUS-17-X-XX.XX-XXX-XX

BY: LENNY K 09-01-2010 SHEET 14 OF 15



\* PROPRIETARY NOTE \*

THIS DOCUMENT CONTAINS CONFIDENTIAL AND PROPRIETARY INFORMATION AND ALL DESIGN, MANUFACTURING, REPRODUCTION, USE, PATENT RIGHTS AND SALES RIGHTS ARE EXPRESSLY RESERVED BY SAMTEC, INC. THIS DOCUMENT SHALL NOT BE DISCLOSED, IN WHOLE OR PART, TO ANY UNAUTHORIZED PERSON OR ENTITY NOR REPRODUCED, TRANSFERRED OR INCORPORATED IN ANY OTHER PROJECT IN ANY MANNER WITHOUT THE EXPRESS WRITTEN CONSENT OF SAMTEC, INC.

DO NOT SCALE DRAWING

SHEET SCALE: 1:1



520 PARK EAST BLVD, NEW ALBANY, IN 47150  
PHONE: 812-944-6733 FAX: 812-948-5047  
e-Mail info@SAMTEC.com code 55322

DESCRIPTION: PANEL MOUNT SEALED USB CABLE

DWG. NO. SCRUS-17-X-XX.XX-XXX-XX

BY: LENNY K 09-01-2010 SHEET 15 OF 15