

Kraftform Kompakt 60 ballhead

New in Autumn 2012

950 SPKL/9 Multicolour



**Mini-Check TORX® HF
with holding function**



Kraftform Micro/12



Kraftform Micro

Now in rugged pouch for the belt.



Kraftform Micro is the ideal screwdriving partner for electronics or precision engineering applications.

The highly precise Wera manufacturing quality is indispensable whenever minimum dimensions are concerned. The three-zone concept reduces fastening time and distinctly lowers the cost for each screw connection.






Kraftform Micro-Set/12 SB 1 Screwdriver set for electronic applications



Application: Slotted and Phillips screws, TORX® socket screws, and Hexagon socket screws

Content: 12-piece set, in a belt pouch



		
Code		
05073675001	2035 Micro 1 x 0.23x1.5x40; 1 x 0.30x1.8x60; 1 x 0.40x2.0x60; 1 x 0.40x2.5x80; 1 x 0.50x3.0x80	1
	2050 PH Micro 1 x PH 00x60; 1 x PH 0x60	
	2054 Micro 1 x 0.9x40; 1 x 1.5x60; 1 x 2.0x60	
	2067 TORX® HF 1 x TX 5x40; 1 x TX 6x40	

Kraftform Micro

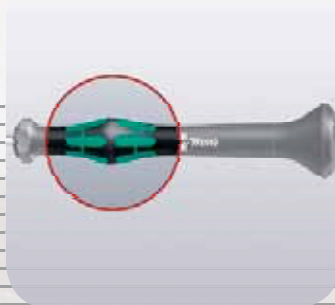
Now in rugged pouch for the belt.



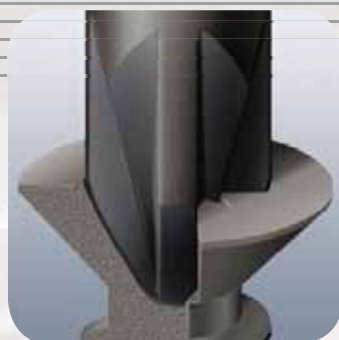
The fixed head and the fast-turning zone just below the head allow **rapid twisting**. This makes time-consuming grip adjustments, as required with other conventional precision screwdrivers, unnecessary.



The power zone has integrated soft zones near the blade tip to ensure **high torque transfer for loosening or tightening screws** without losing contact with the screw.



The precision zone directly above the blade gives the user a better feel **for the right rotation angle during fine adjustment work**.



The Wera Black Point tip, as well as a refined hardening process, ensure **long service life** and **enhanced corrosion protection**.



Multi-component screwdriver handle for **ergonomic working**.



Indispensable for many users, including electronics technicians, opticians, precision engineers, jewellers, EDP hardware fitters and model-makers.

L-key Set Multicolour

With convenient colour-coded tubing.

NEW



L-keys in SPKL quality Multicolour

9-piece set

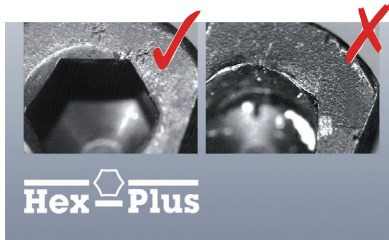
Highest quality: Round material with profiled Hex-Plus design, also with the ballpoint version. The Hex-Plus profile extends the service life of hexagon socket screws. BlackLaser surface treatment for high corrosion protection.

The rubber sleeve provides a pleasant grip, particularly in applications at low temperatures. The colour-coded tubing makes it easy to find the right tool.



Hex-Plus

Hexagon screws can endure a problem because the contact surfaces delivering the power from the conventional tool, is transferred to the screw via very small surface areas. The consequence: the screw can become damaged (rounding out). Hex-Plus tools have a greater contact surface that prevents this from happening! Good to know: Hex-Plus tools fit into every standard hexagon socket screw!





950 SPKL/9 SM N Multicolour L-key set, metric, BlackLaser

Hex-Plus



9-piece set in a two-component clip

		
Code		
05073593001	950 SPKL Multicolour	5
	1 x 1.5x90; 1 x 2.0x101; 1 x 2.5x112; 1 x 3.0x123; 1 x 4.0x137; 1 x 5.0x154; 1 x 6.0x172; 1 x 8.0x195; 1 x 10.0x224	

Kraftform Kompakt 60 KK

Now with bits with ballpoint profile.

NEW



- 17 pieces
- Ideal for confined spaces
 - Ballpoint for hexagon socket screws and TORX®
 - Suitable for manual and power tool applications
 - Rapidaptor for rapid bit change
 - Practical belt pouch included



89 mm



Kraftform Kompakt

Many professionals work with their tools at both a fixed location, such as a workshop, and at external sites away from their base. Frequently it is only out on site that a decision is made as to whether use a manual or power tool for a particular job.

The unique Kraftform Kompakt tool kits equip the user for both types of operation with just a single set, and as the kits come in rugged pouches with belt loops, they are easily carried wherever needed.



Kraftform Kompakt 60 KK

Hex-Plus



Pouch with 89 mm bits
 17-piece set
 1 Kraftform bitholding screwdriver 816 R with Rapidaptor quick-release chuck

Code		
05059294001	816 R	1 x 1/4"x119
	842/4	1 x 3.0x89; 1 x 4.0x89; 1 x 5.0x89; 1 x 6.0x89
	851/4 Z PH	1 x PH 1x89; 1 x PH 2x89; 1 x PH 3x89
	855/4 Z PZ	1 x PZ 1x89; 1 x PZ 2x89; 1 x PZ 3x89
	867/4 KK	1 x TX 10x89; 1 x TX 15x89; 1 x TX 20x89; 1 x TX 25x89; 1 x TX 30x89; 1 x TX 40x89

1