

Switchcraft®

[Previous Page](#) | [Return to Index](#) | [Next Page](#)



DIN RECEPTACLES

- 1. RECEPTACLE with Closed Circuit Switch**
- 2. RECEPTACLE for Chassis or Panel Mounting For shielded and extended barrel plugs**

[click here to download a schematic drawing](#)

(you will need to have Adobe Acrobat installed on your system to do this)



RECEPTACLE with Closed Circuit Switch

Type 59GB3F - typical Unique 3 contact receptacle includes a 1-B (closed circuit) switch which is mounted to drawn metal shell. Switch is actuated by the shell of the mating plug. Receptacle also provide complete shielding through the ground contact. Flared solder terminals.

ORDERING INFORMATION

| Part Number | Description | Contact Arrangement |
|-------------|---|---------------------|
| ⌘59GB3F | 3 contacts at 180° plus closed-circuit switch | B |

RECEPTACLE for Chassis or Panel Mounting For shielded and extended barrel plugs

Type 57GB5F - typical - Flared solder terminals Drawn metal recessed shell with mounting flange and ground contact. Available flared solder terminals. Part Number 58GB3F features two extra blanks in insert for proper mating (5 pins at 180°) plug where applications may require greater connector flexibility. Flared solder terminals standard.

ORDERING INFORMATION

| Part Number | Descriptions | Contact Arrangement |
|-------------|--------------------|---------------------|
| ⌘57GB3F | 3 contacts at 180° | B |
| 57GB5F | 5 contacts at 180° | F |
| 60GB4F | 4 contacts at 210° | D |
| 61GB5F | 5 contacts at 240° | E |
| 61GB6F | 6 contacts at 240° | G |
| 62GB7F | 7 contacts at 270° | H |
| 62GB8F | 8 contacts at 270° | N |
| ⌘70GB8F | 8 contacts at 262° | P |

⌘ Available on special order only; contact Switchcraft for price and delivery.

[Previous Page](#) | [Return to Index](#) | [Next Page](#)

To search a category please click on the corresponding icon:

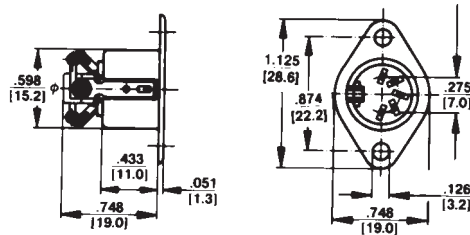
DIN RECEPTACLES

RECEPTACLE with Closed Circuit Switch



Type 59GB5F - typical

Unique 3 and 5 contact receptacles include a 1-B (closed circuit) switch which is mounted to drawn metal shell. Switch is actuated by the shell of the mating plug. Receptacles also provide complete shielding through the ground contact. Flared solder terminals.

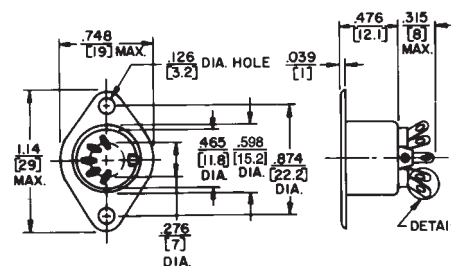


RECEPTACLE for Chassis or Panel Mounting For shielded and extended barrel plugs



Type 57GB5F - typical - Flared solder terminals

Drawn metal recessed shell with mounting flange and ground contact. Available flared solder terminals. Part Number 58GB3F features two extra blanks in insert for proper mating (5 pins at 180°) plug where applications may require greater connector flexibility. Flared solder terminals standard.



DIMENSIONS ARE FOR REFERENCE ONLY $\frac{\text{Inch}}{(\text{mm})}$

NOTE: Contact your Switchcraft Representative for price and delivery.