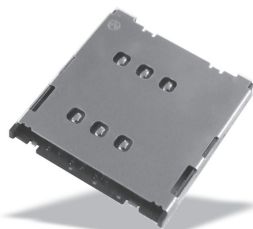




Specifications

Insulation Resistance:	500MΩ min. at 500V DC
Withstanding Voltage:	250V ACrms for 1 minute
Contact Resistance:	100mΩ max. at 10mA / 20mV max.
Current Rating:	0.5A
Voltage Rating:	5.0V AC rms
Operating Temp. Range:	-25°C to +85°C
Mating Cycles:	5,000 insertions



Part Number (Details)

FMS006 - 5100-0

Series No.

Design No.

Materials and Finish

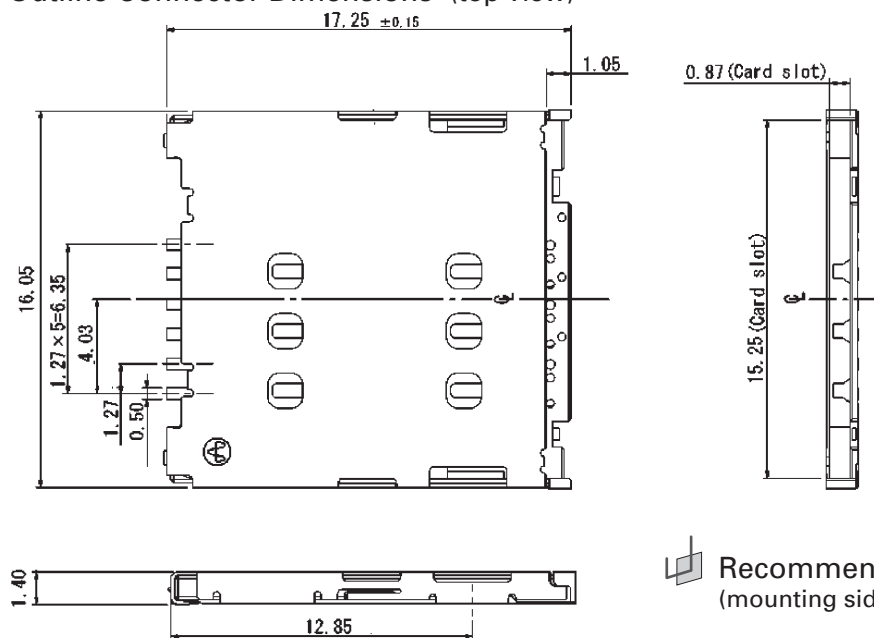
Insulator:	Heat Resistant Plastic
Contact:	Copper Alloy, Ni-Au
Reinforce metal:	SUS
Metal Cover:	SUS, Plating Gold over Nickel

Features

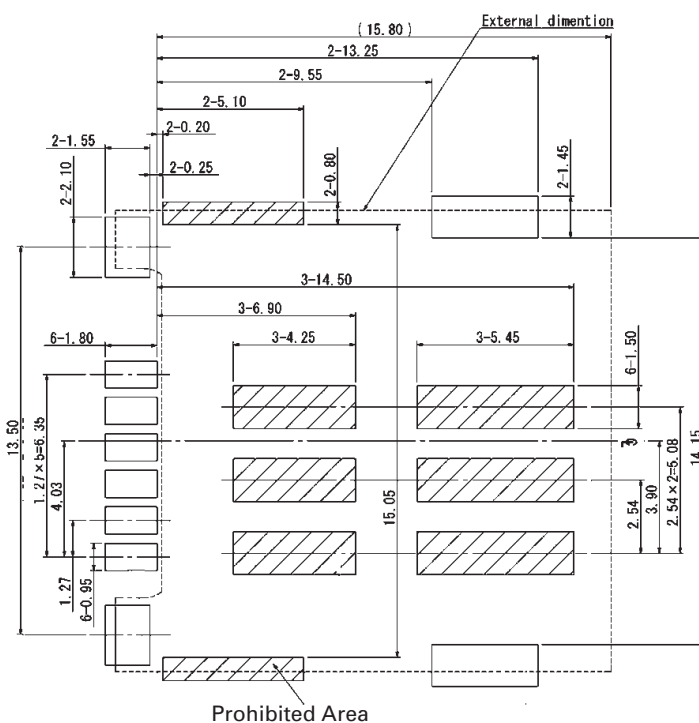
- Manual type
- Super low profile design ht. = 1.40mm
- Top mount
- Static discontinuity prevention
- Tape and Reel (1,300 pcs./reel)



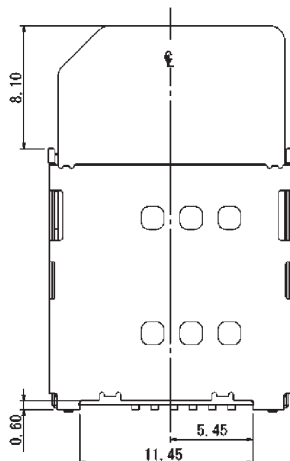
Outline Connector Dimensions (top view)



Recommended PCB Layout (mounting side)



Card Insertion



Mouser Electronics

Authorized Distributor

Click to View Pricing, Inventory, Delivery & Lifecycle Information:

[Yamaichi Electronics:](#)

[FMS006-5100-0](#)