



**Ordering number** FA11110  
**Description** FA11110\_LOST-D

Family	Leila	FWHM	25 degrees
Type	Assembly	Efficiency	89
LED	Ostar Lighting+	cd/Im	-
Color	Black	Gerber File	Available
Diameter	21.6 mm		
Height	13.2 mm		
Style	Round		
Optic Material	PMMA		
Holder Material	PC		
Fastening	Tape		
Status	Ready		



**Ordering number** FA11112  
**Description** FA11112\_LOST-M

Family	Leila	FWHM	30 degrees
Type	Assembly	Efficiency	88
LED	Ostar Lighting+	cd/Im	-
Color	Black	Gerber File	Available
Diameter	21.6 mm		
Height	13.2 mm		
Style	Round		
Optic Material	PMMA		
Holder Material	PC		
Fastening	Tape		
Status	Ready		



**Ordering number** FA11113  
**Description** FA11113\_LOST-W

Family	Leila	FWHM	degrees
Type	Assembly	Efficiency	-
LED	Ostar Lighting+	cd/Im	-
Color	Black	Gerber File	Available
Diameter	21.6 mm		
Height	13.2 mm		
Style	Round		
Optic Material	PMMA		
Holder Material	PC		
Fastening	Tape		
Status	Ready		



**Ordering number** FA11114  
**Description** FA11114\_LOST-O-90

Family	Leila	FWHM	36+24 degrees
Type	Assembly	Efficiency	85
LED	Ostar Lighting+	cd/Im	-
Color	Black	Gerber File	Available
Diameter	21.6 mm		
Height	13.2 mm		
Style	Round		
Optic Material	PMMA		
Holder Material	PC		
Fastening	Tape		
Status	Ready		

## Leila LOST series



**Ordering number** FA11115  
**Description** FA11115\_LOST-REC

Family	Leila	FWHM	36+29 degrees
Type	Assembly	Efficiency	81
LED	Ostar Lighting+	cd/lm	-
Color	Black	Gerber File	Available
Diameter	21.6 mm		
Height	13.2 mm		
Style	Round		
Optic Material	PMMA		
Holder Material	PC		
Fastening	Tape		
Status	Ready		



**Ordering number** FA11463  
**Description** FA11463\_LOST-M2

Family	Leila	FWHM	degrees
Type	Assembly	Efficiency	-
LED	Ostar Lighting+	cd/lm	-
Color	Black	Gerber File	Available
Diameter	21.6 mm		
Height	13.2 mm		
Style	Round		
Optic Material	PMMA		
Holder Material	PC		
Fastening	Tape		
Status	Ready		



## Leila LOST series

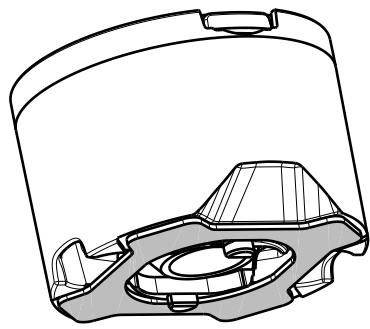
Specially designed for Ostar Lighting+ series of LEDs.

Fastening to heat sink with a PU foam adhesive tape of automotive grade.

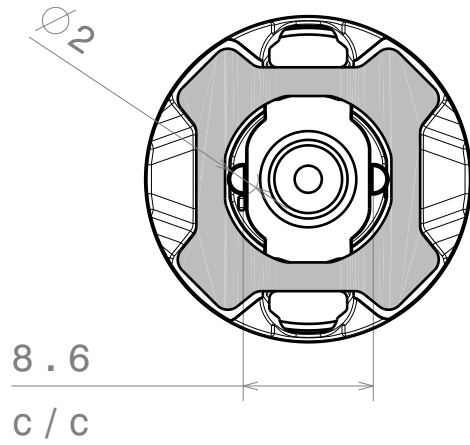
Please find fastening details by clicking link below:

[http://ledil.fi/sites/default/files/Documents/Technical/Installation/20110406\\_DataSheet\\_TAPE.pdf](http://ledil.fi/sites/default/files/Documents/Technical/Installation/20110406_DataSheet_TAPE.pdf)

We advise customer to ensure the suitability and sufficiency of the bond in the end product. For example, mechanical stress, vibration and holes on the surface of the circuit board weaken the strength of the tape.



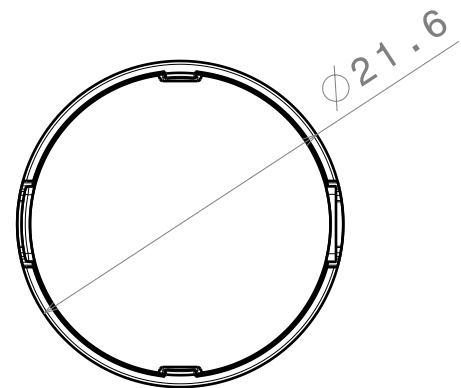
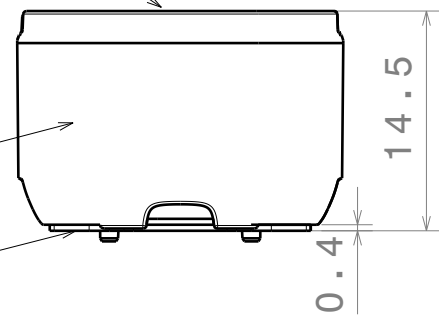
Isometric view



Lens

Holder

tape



Top view

Materials:  
Lens: PMMA  
Holder: PC white  
Tape: PU FOAM

This drawing is our property.  
It can't be reproduced  
or communicated without  
our written agreement.



L  
T  
F  
F

e  
e  
l  
i  
n

d  
h

## DRAWING TITLE

Datasheet LR2-ES series assy

DRAWN BY

m

DATE

28.12.2010

CHECKED BY

h

h

DATE

28.12.2010

DESIGNED BY

pl

DATE

27.08.2010

SIZE

A4

DRAWING NUMBER

-

REV

1

SCALE

1:1

WEIGHT (g)

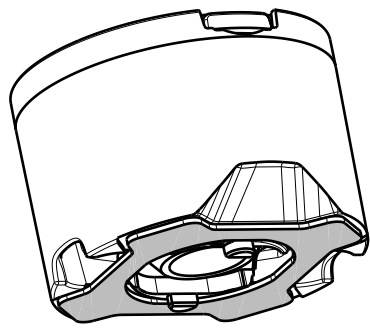
SHEET

1/1

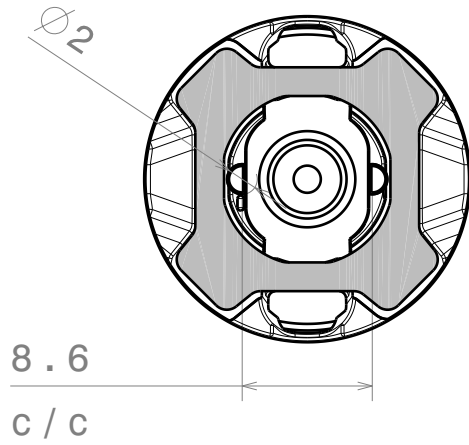
D

A





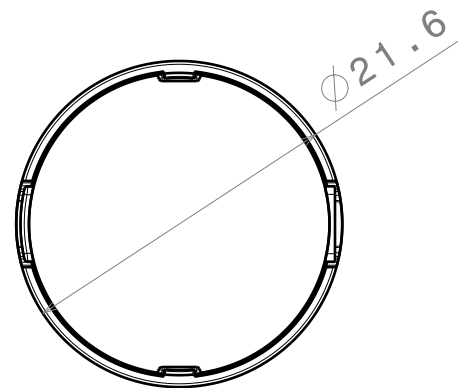
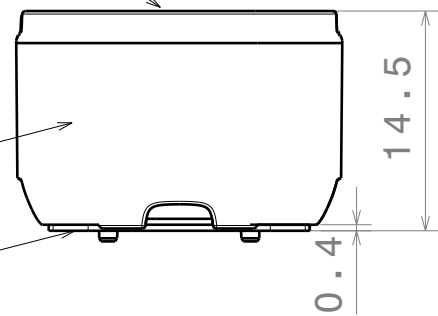
Isometric view



Lens

Holder

tape



Top view

Materials:  
Lens: PMMA  
Holder: PC white  
Tape: PU FOAM

This drawing is our property.  
It can't be reproduced  
or communicated without  
our written agreement.

LEDIL

L  
T  
F  
F

e  
e  
l  
i  
n

N  
n

d  
h

# DRAWING TITLE

Datasheet LR2-ES series assy

DRAWN BY

m

DATE

28.12.2010

CHECKED BY

h

h

DATE

28.12.2010

DESIGNED BY

pl

DATE

27.08.2010

SIZE

A4

DRAWING NUMBER

-

REV

1

SCALE

1:1

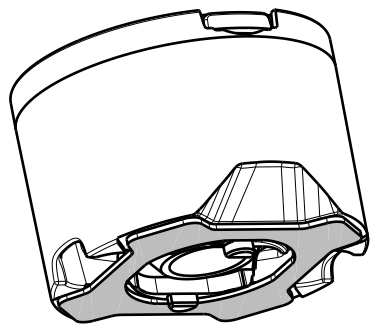
WEIGHT (g)

SHEET

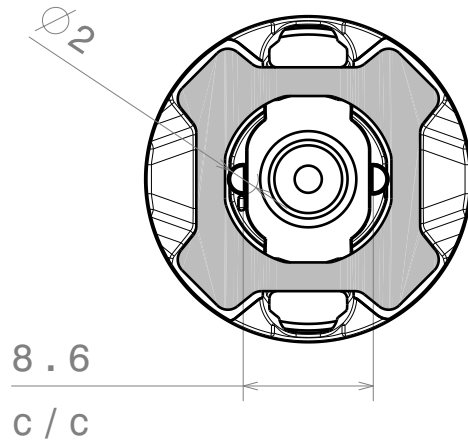
1/1

D

A



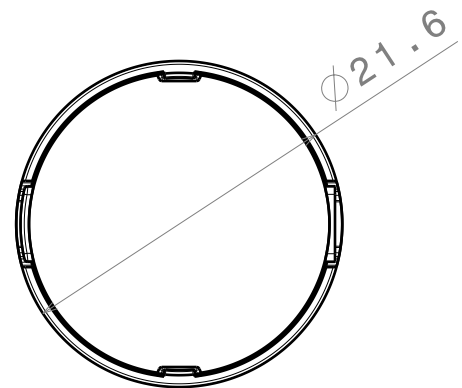
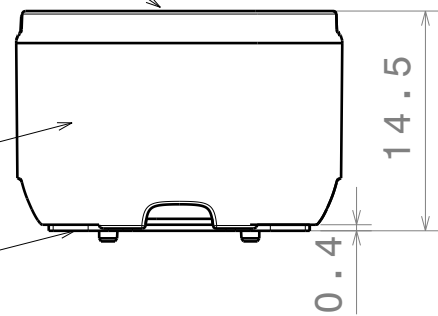
Isometric view



Lens

Holder

tape



Top view

Materials:  
Lens: PMMA  
Holder: PC white  
Tape: PU FOAM

This drawing is our property.  
It can't be reproduced  
or communicated without  
our written agreement.

LEDIL

L  
T  
F  
F

e  
e  
l  
i  
n  
n

d  
h

DRAWING TITLE

Datasheet LR2-ES series assy

DRAWN BY

m

DATE

28.12.2010

CHECKED BY

h

h

DATE

28.12.2010

DESIGNED BY

pl

DATE

27.08.2010

SIZE

A4

DRAWING NUMBER

-

REV

1

SCALE

1:1

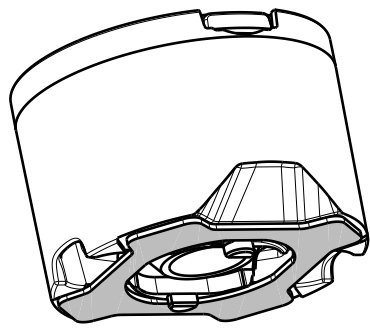
WEIGHT (g)

SHEET

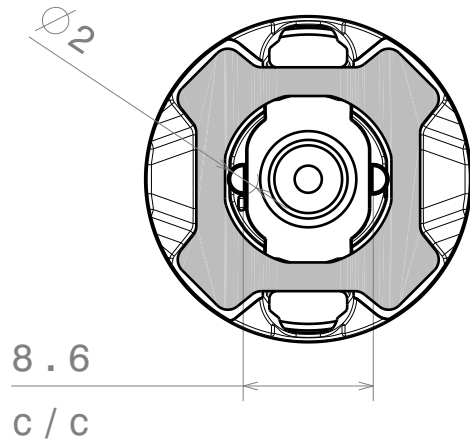
1/1

D

A



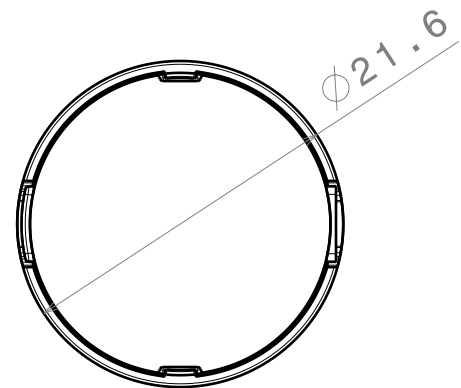
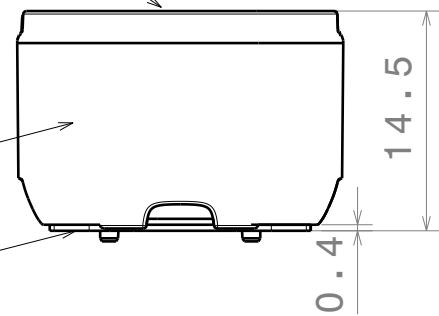
Isometric view



Lens

Holder

tape



Top view

Materials:  
Lens: PMMA  
Holder: PC white  
Tape: PU FOAM

This drawing is our property.  
It can't be reproduced  
or communicated without  
our written agreement.



L  
T  
F  
F

e  
e  
l  
i  
n

d  
h

## DRAWING TITLE

Datasheet LR2-ES series assy

DRAWN BY

m

DATE

28.12.2010

CHECKED BY

h

h

DATE

28.12.2010

DESIGNED BY

pl

DATE

27.08.2010

SIZE

A4

DRAWING NUMBER

-

REV

1

SCALE

1:1

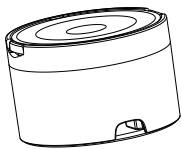
WEIGHT (g)

SHEET

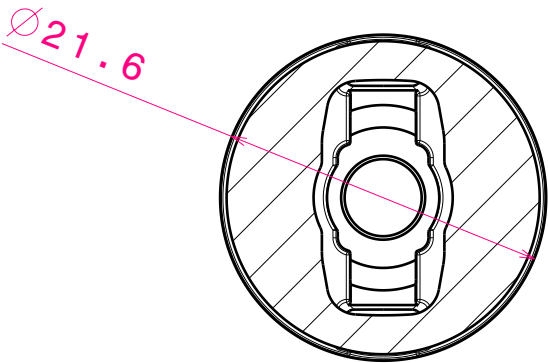
1/1

D

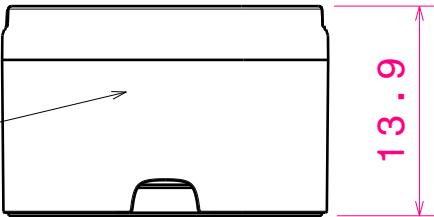
A



Isometric view  
Scale: 1:1



Bottom view



Front view

Holder: L03-LH1-tape

Tape 0.2mm

Materials;  
Lens: PMMA  
Holder: PC  
Tape: PU Foam

This drawing is our property.  
It can't be reproduced  
or communicated without  
our written agreement.



L  
T  
F  
F

e  
e  
l  
i  
n

N

d  
h

DRAWING TITLE

Datasheet L02-W tape assy

DRAWN BY

p

DATE

12.01.2010

CHECKED BY

t k

DATE

19.12.2009

DESIGNED BY

pv

DATE

06.12.2009

SIZE

A4

DRAWING NUMBER

-

REV

1

SCALE

2:1

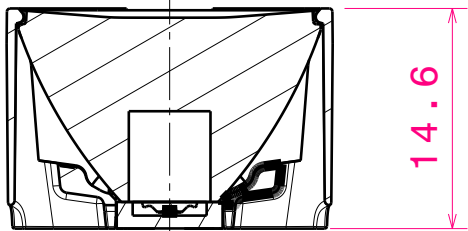
WEIGHT (g)

SHEET

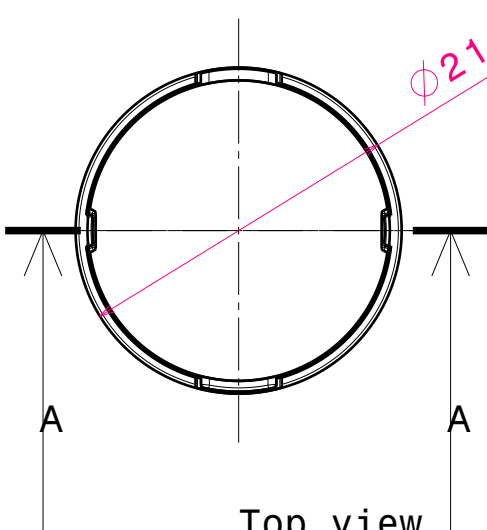
1 / 1

D

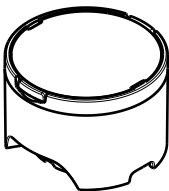
A



Section view A-A  
Scale: 2:1



Top view  
Scale: 2:1



Isometric view  
Scale: 1:1

Materials:  
lens PMMA  
holder PC

This drawing is our property.  
It can't be reproduced  
or communicated without  
our written agreement.



L  
T  
F  
F

e  
e  
l  
i  
n

d  
h

DRAWING TITLE

DATASHEET L02 Series

DRAWN BY  
P V  
DATE  
19.05.2008

CHECKED BY  
T K  
DATE  
19.05.2008

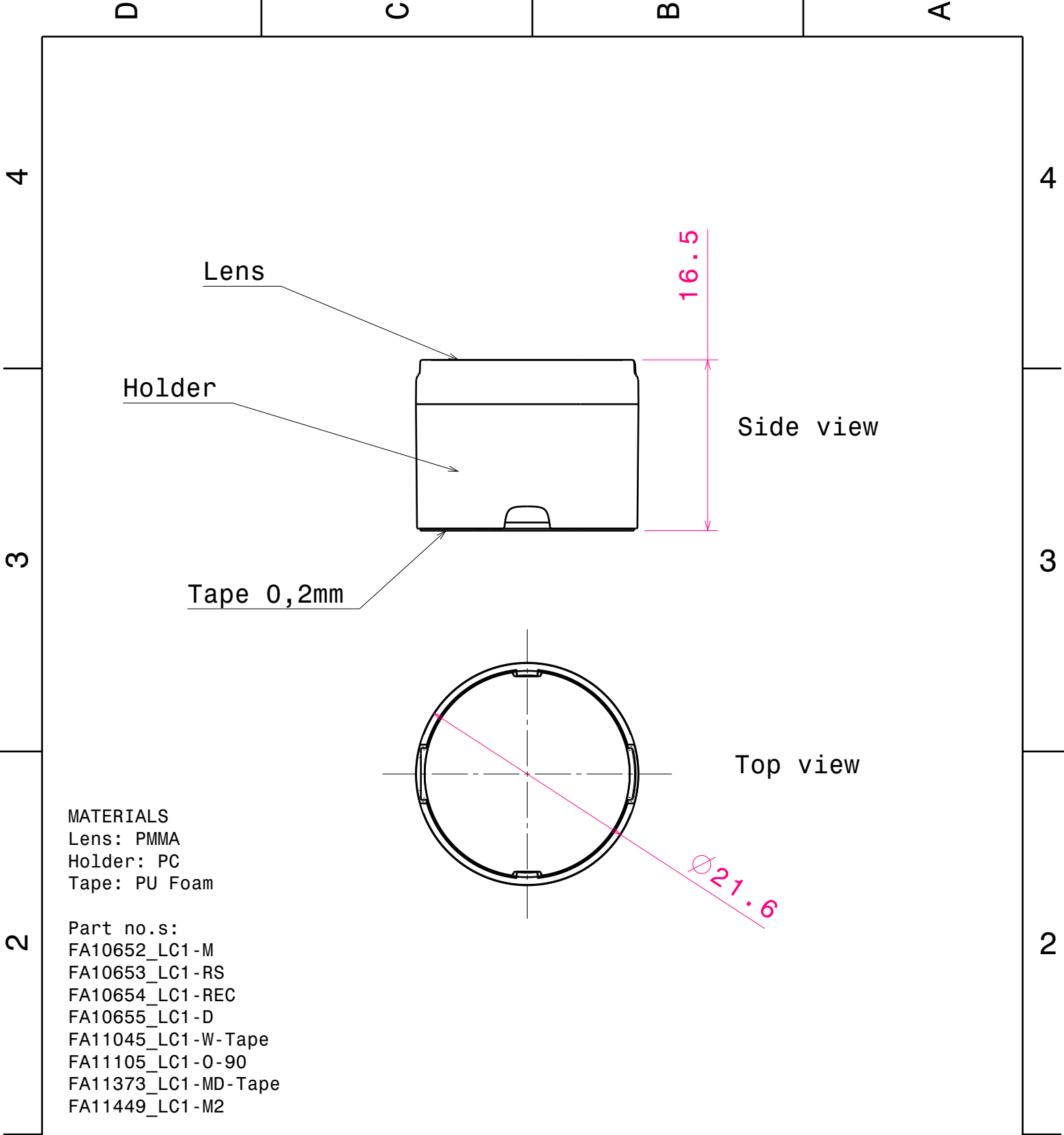
DESIGNED BY  
HH  
DATE  
30.04.2008

SIZE  
A4  
DRAWING NUMBER  
REV  
0.1

SCALE  
2:1  
WEIGHT (g)  
SHEET  
1/1

D

A



This drawing is our property.  
It can't be reproduced  
or communicated without  
our written agreement.



L  
T  
F  
F

e  
e  
i  
i

N  
n

d  
h

DRAWING TITLE

Datasheet Assembly LC1-series

DRAWN BY

p

DATE

17.01.2011

CHECKED BY

t

k

DATE

25.09.2008

DESIGNED BY

HH

DATE

24.07.2008

SIZE

A4

DRAWING NUMBER

-

REV

1

SCALE

2:1

WEIGHT (g)

-

SHEET

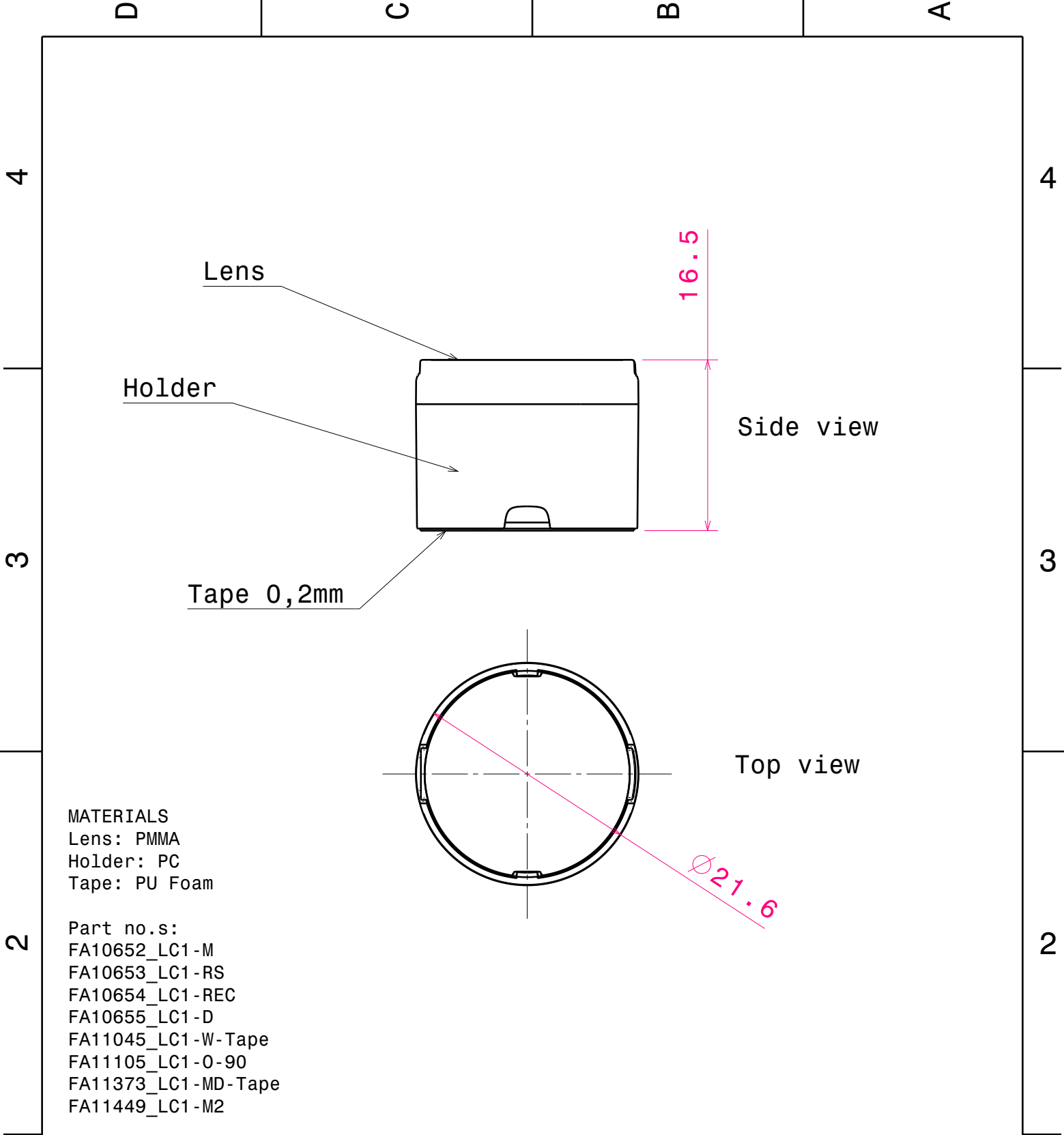
1 / 1

D

A

1





This drawing is our property.  
It can't be reproduced  
or communicated without  
our written agreement.



L  
T  
F  
F

e  
e  
l  
i  
n

N

d

DRAWING TITLE

Datasheet Assembly LC1-series

DRAWN BY

DATE

17.01.2011

CHECKED BY

DATE

25.09.2008

DESIGNED BY

DATE

24.07.2008

SIZE

A4

DRAWING NUMBER

-

REV

1

SCALE

2:1

WEIGHT (g)

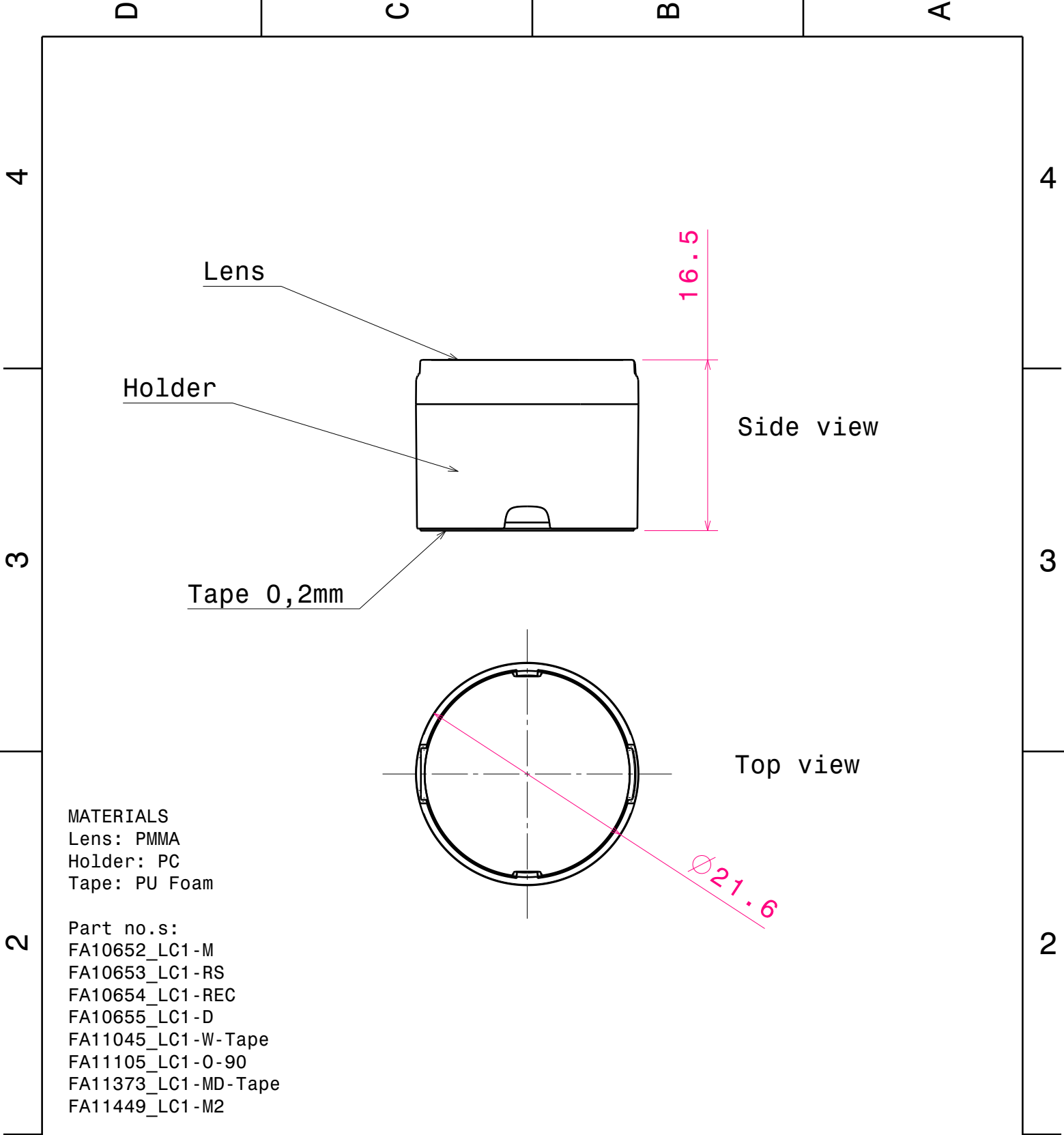
-

SHEET

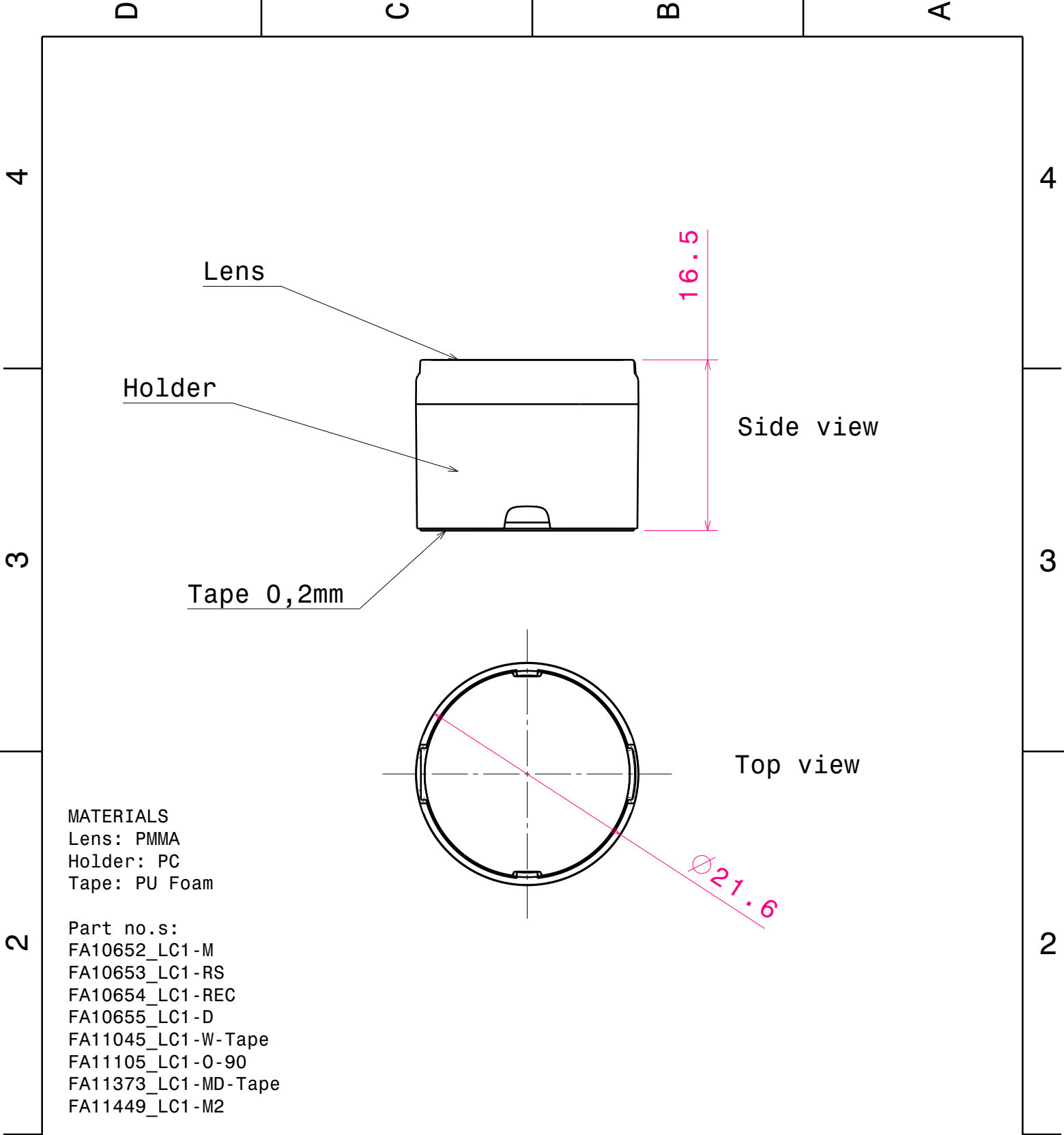
1 / 1

D

A



This drawing is our property. It can't be reproduced or communicated without our written agreement.		<div>LEDIL</div> <div>L T F F e e l i n</div>			
		DRAWING TITLE			
DRAWN BY p	DATE 17.01.2011	Datasheet Assembly LC1-series			
CHECKED BY t k	DATE 25.09.2008	SIZE A4	DRAWING NUMBER -	REV 1	
DESIGNED BY HH	DATE 24.07.2008	SCALE 2 : 1	WEIGHT (g) -	SHEET 1 / 1	



MATERIALS  
Lens: PMMA  
Holder: PC  
Tape: PU Foam

Part no.s:  
FA10652\_LC1-M  
FA10653\_LC1-RS  
FA10654\_LC1-REC  
FA10655\_LC1-D  
FA11045\_LC1-W-Tape  
FA11105\_LC1-O-90  
FA11373\_LC1-MD-Tape  
FA11449\_LC1-M2

This drawing is our property.  
It can't be reproduced  
or communicated without  
our written agreement.



L  
T  
F  
F

e  
e  
i  
i

N  
n

d  
h

DRAWING TITLE

Datasheet Assembly LC1-series

DRAWN BY

p

DATE

17.01.2011

CHECKED BY

t

k

DATE

25.09.2008

DESIGNED BY

HH

DATE

24.07.2008

SIZE

A4

DRAWING NUMBER

-

REV

1

SCALE

2:1

WEIGHT (g)

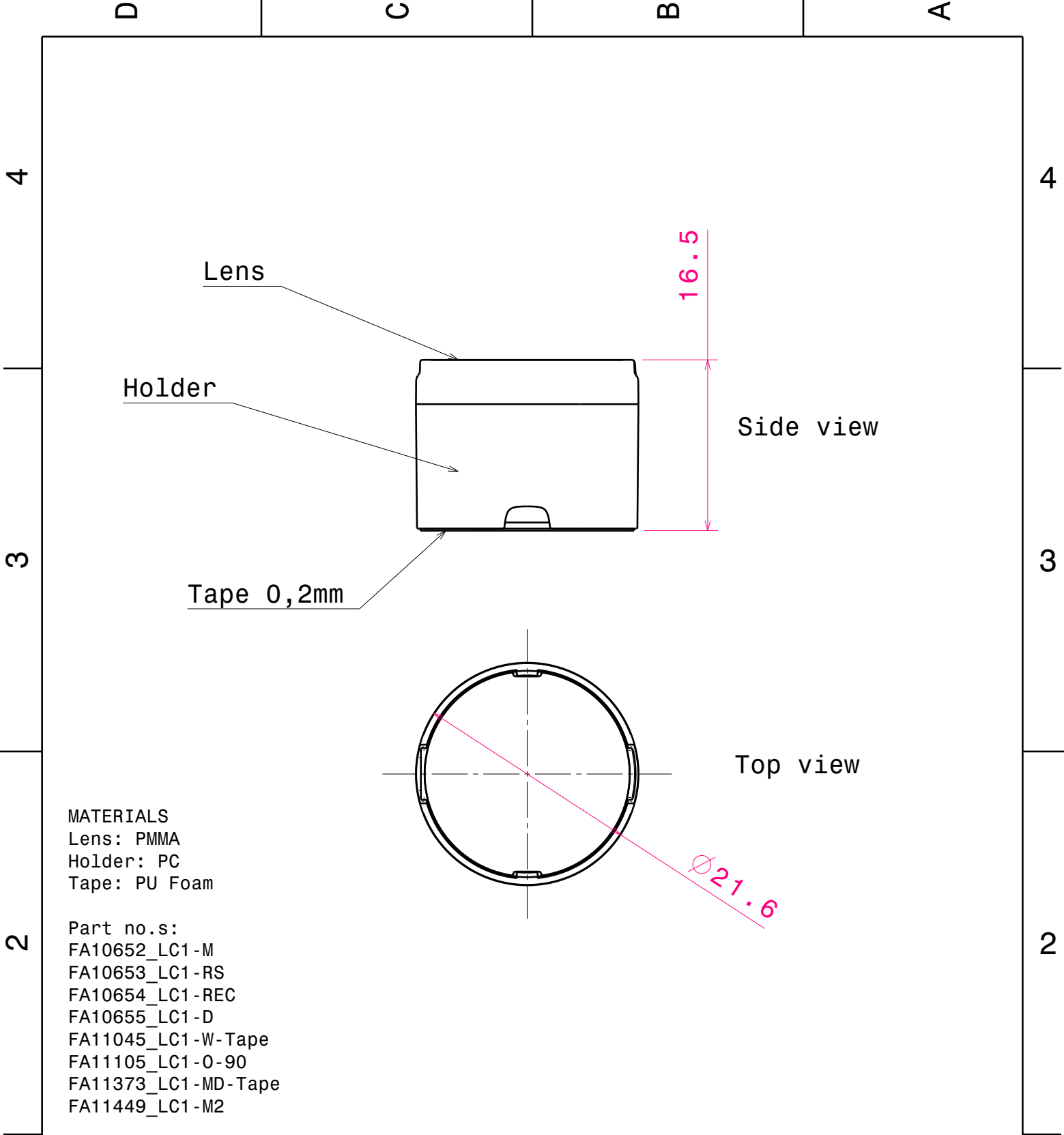
-

SHEET

1/1

D

A



MATERIALS  
Lens: PMMA  
Holder: PC  
Tape: PU Foam

Part no.s:  
FA10652\_LC1-M  
FA10653\_LC1-RS  
FA10654\_LC1-REC  
FA10655\_LC1-D  
FA11045\_LC1-W-Tape  
FA11105\_LC1-O-90  
FA11373\_LC1-MD-Tape  
FA11449\_LC1-M2

This drawing is our property.  
It can't be reproduced  
or communicated without  
our written agreement.



L  
T  
F  
F

e  
e  
i  
i

N  
n

d  
h

DRAWING TITLE

Datasheet Assembly LC1-series

DRAWN BY

p

DATE

17.01.2011

CHECKED BY

t

k

DATE

25.09.2008

DESIGNED BY

HH

DATE

24.07.2008

SIZE

A4

DRAWING NUMBER

-

REV

1

SCALE

2:1

WEIGHT (g)

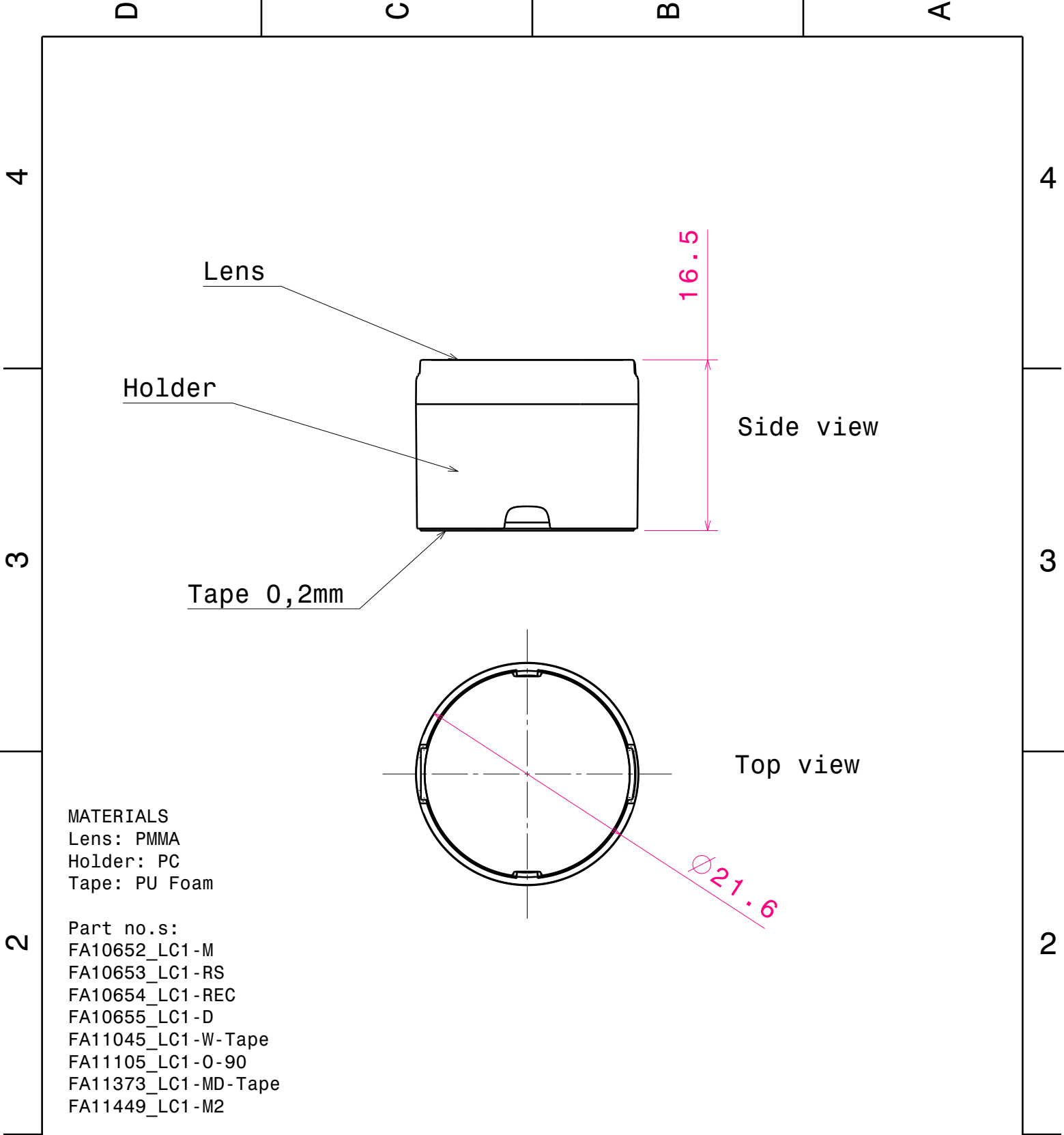
-

SHEET

1/1

D

A



This drawing is our property.  
It can't be reproduced  
or communicated without  
our written agreement.



L  
T  
F  
F

e  
e  
l  
i  
N  
n

d  
h

DRAWING TITLE

Datasheet Assembly LC1-series

DRAWN BY

DATE

17.01.2011

CHECKED BY

DATE

25.09.2008

DESIGNED BY

HH

DATE

24.07.2008

SIZE

A4

DRAWING NUMBER

-

REV

1

SCALE

2:1

WEIGHT (g)

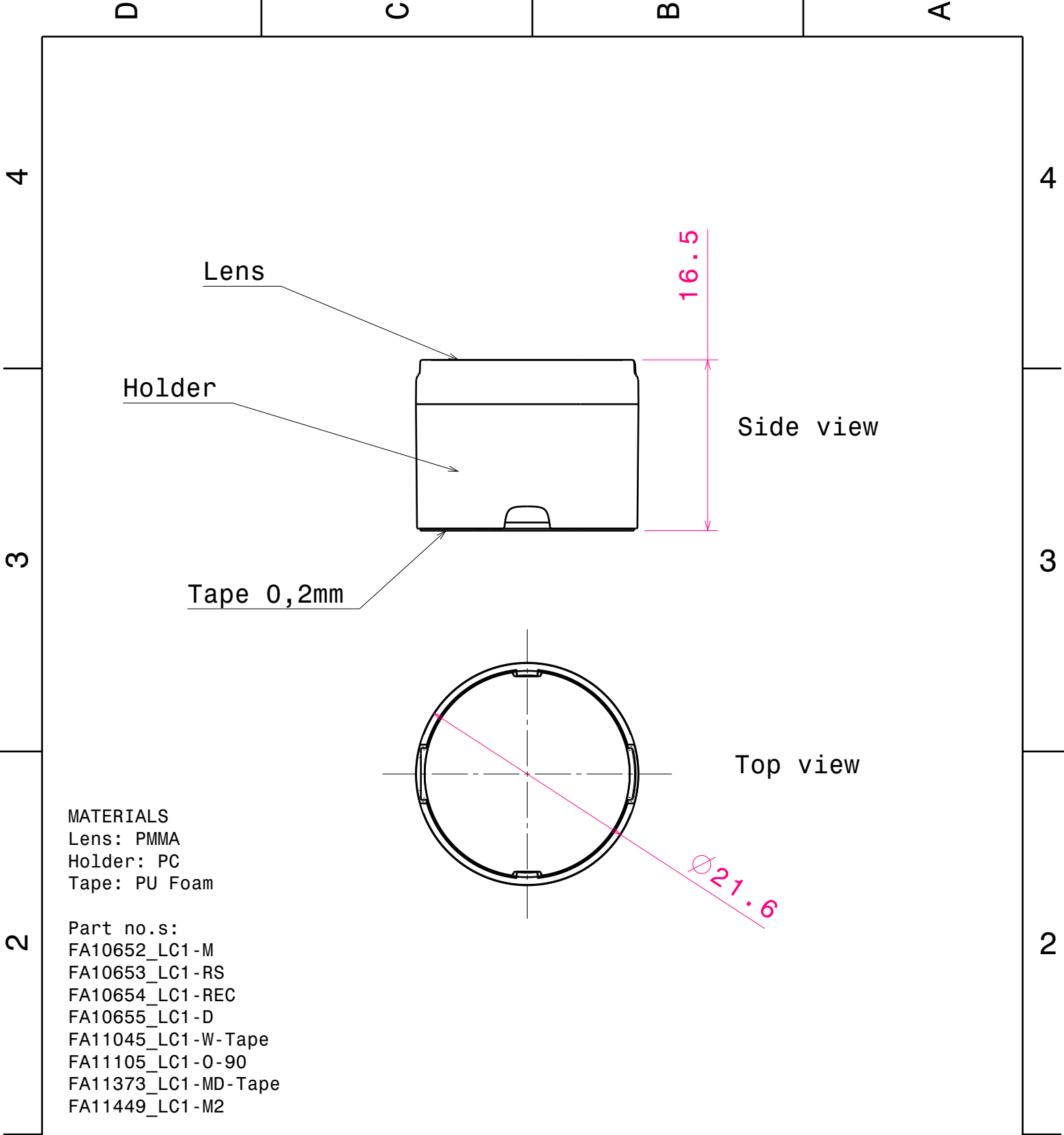
-

SHEET

1 / 1

D

A



This drawing is our property.  
It can't be reproduced  
or communicated without  
our written agreement.



L  
T  
F  
F

e  
e  
l  
i  
N  
n

d  
h

DRAWING TITLE

Datasheet Assembly LC1-series

DRAWN BY

DATE

17.01.2011

CHECKED BY

DATE

25.09.2008

DESIGNED BY

HH

DATE

24.07.2008

SIZE

A4

DRAWING NUMBER

-

REV

1

SCALE

2:1

WEIGHT (g)

-

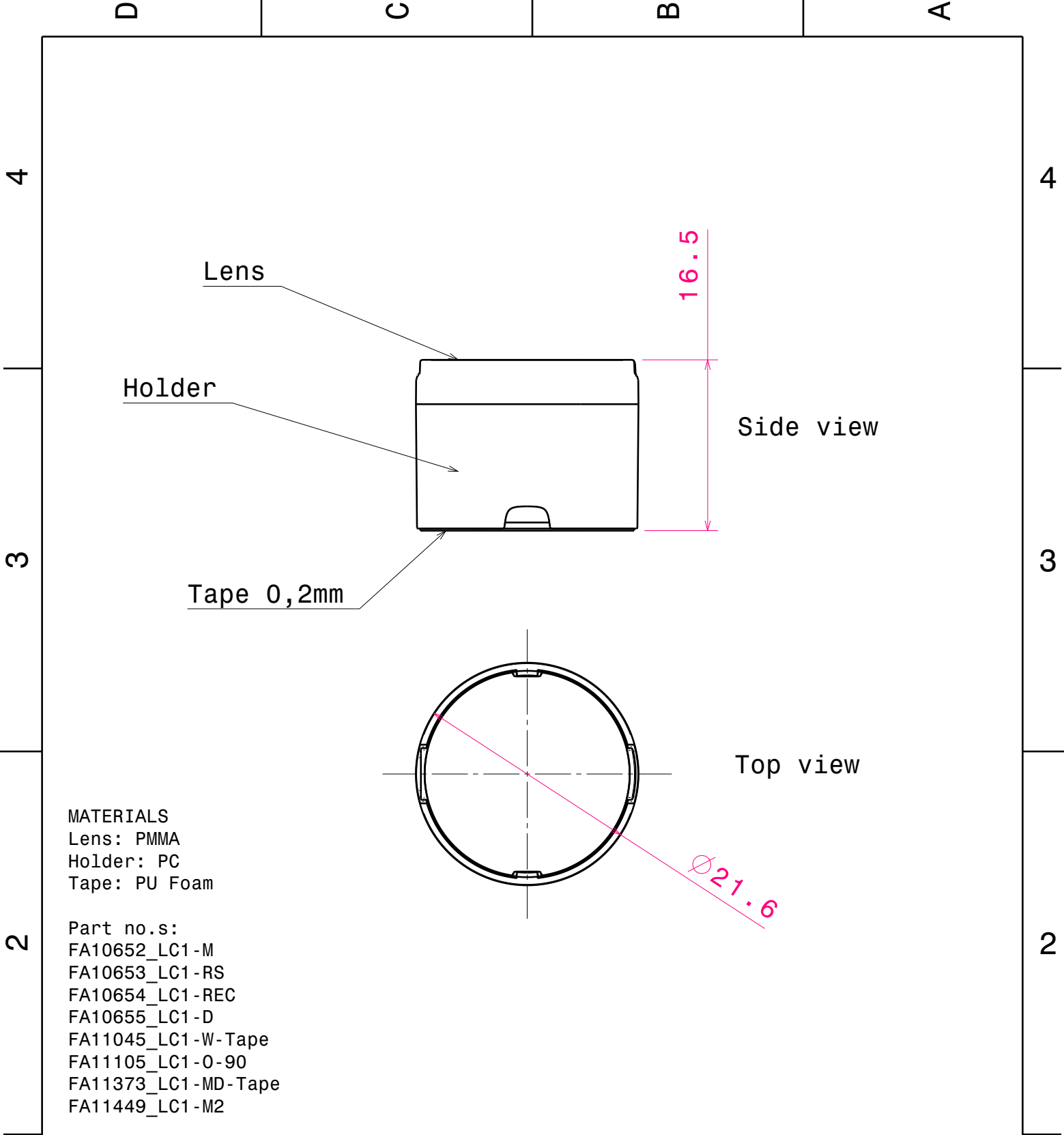
SHEET

1 / 1

D

A





This drawing is our property.  
It can't be reproduced  
or communicated without  
our written agreement.



L  
T  
F  
F

e  
e  
l  
i  
N  
n

d  
h

DRAWING TITLE

Datasheet Assembly LC1-series

DRAWN BY

DATE

17.01.2011

CHECKED BY

DATE

25.09.2008

DESIGNED BY

HH

DATE

24.07.2008

SIZE

A4

DRAWING NUMBER

-

REV

1

SCALE

2:1

WEIGHT (g)

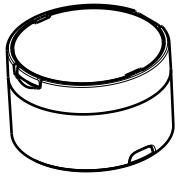
-

SHEET

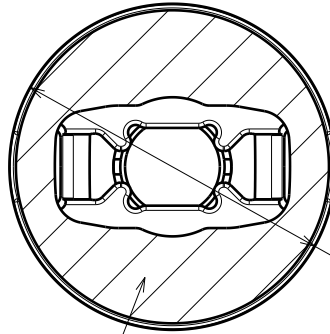
1 / 1

D

A



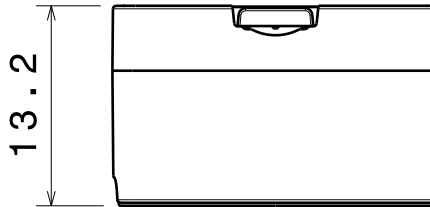
Isometric view  
Scale: 1:1



Bottom view

Tape 0.2mm

Ø21.6



Front view

MATERIALS  
Lens: PMMA  
Holder: PC  
Tape: PU Foam

Part no.s:  
FA11109\_LOST-RS  
FA11110\_LOST-D  
FA11112\_LOST-M  
FA11114\_LOST-O-90  
FA11115\_LOST-REC

This drawing is our property.  
It can't be reproduced  
or communicated without  
our written agreement.

**LEDIL**

Ledil Oy  
Tehdaskatu 13  
FIN-24100 SALO  
Finland

DRAWING TITLE

Datasheet Lost-Series assy

DRAWN BY

pv

DATE

09.03.2010

CHECKED BY

hh

DATE

17.09.2009

SIZE

A4

DRAWING NUMBER

REV

1

DESIGNED BY

pv

DATE

17.09.2009

SCALE

2:1

WEIGHT (g)

-

SHEET

1/1

D

A