

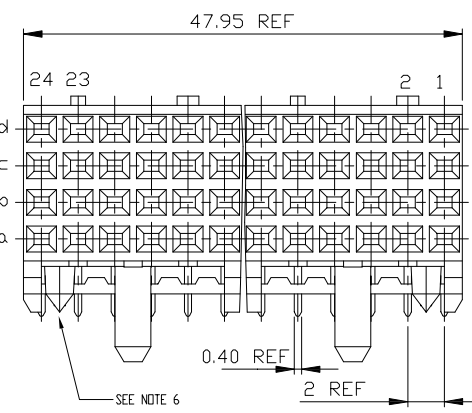
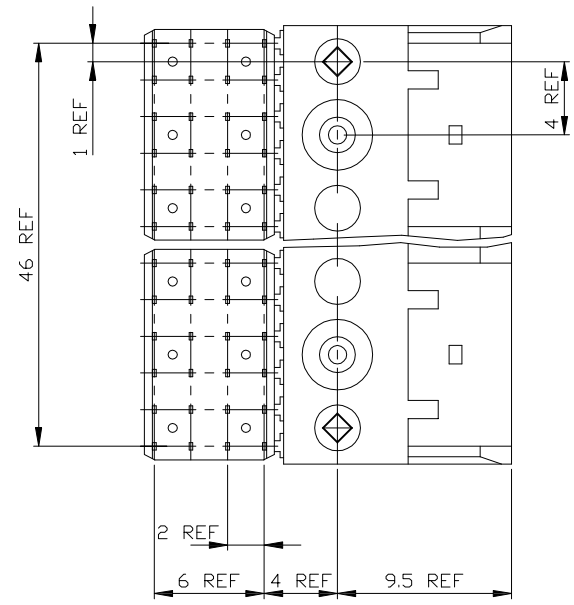
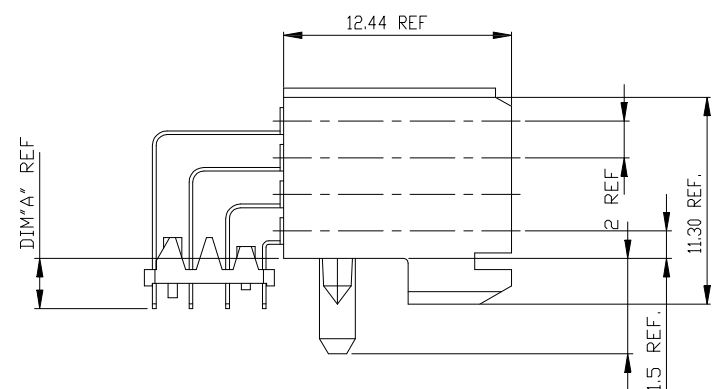
Tous droits strictement réservés. Reproduction ou communication à des tiers sans autorisation écrite de la propriété de F.C.I. S.A.
All rights strictly reserved. Reproduction or issue to third parties in any form without written authority from the proprietor.
Property of F.C.I. S.A.
© F.C.I. S.A.



| PLATING CONTACT AREA: | |
|-----------------------|-------------------|
| DASH NR: | PERFORMANCE LEVEL |
| -1YY/1YYLF | TELCORDIA CO |
| -2YY/2YYLF | CUSTOMER SPECIAL |
| -3YY/3YYLF | CUSTOMER SPECIAL |

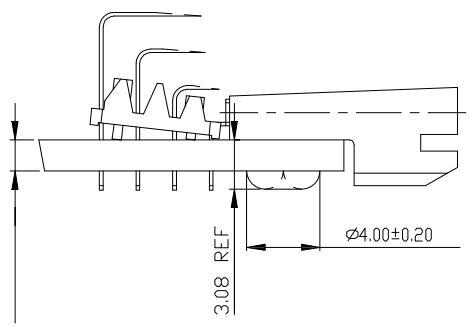
| PC BOARD VERSIONS | | |
|-------------------|---------------|--------|
| PRODUCTNR: | PCB THICKNESS | DIM"A" |
| 89032-X0Z | 1.6 | 2.90 |
| 89032-X1Z | 2.4 | 3.53 |

| LOADING CONFIGURATION | POSITION ROW | 24 | 23 | 22 | 21 | 20 | 19 | 18 | 17 | 16 | 15 | 14 | 13 | 12 | 11 | 10 | 9 | 8 | 7 | 6 | 5 | 4 | 3 | 2 | 1 |
|-----------------------|--------------|----|----|----|----|----|----|----|----|----|----|----|----|----|----|----|---|---|---|---|---|---|---|---|---|
| 89032-XY1 | d | + | 0 | + | 0 | + | 0 | + | 0 | + | + | + | 0 | + | 0 | 0 | 0 | 0 | + | 0 | + | 0 | 0 | + | 0 |
| | c | 0 | + | 0 | + | 0 | + | 0 | + | 0 | + | + | 0 | + | 0 | 0 | 0 | 0 | 0 | + | 0 | 0 | 0 | 0 | + |
| | b | + | 0 | + | 0 | + | 0 | + | 0 | + | + | + | 0 | + | 0 | 0 | 0 | + | 0 | + | 0 | 0 | 0 | + | 0 |
| | a | 0 | + | 0 | + | 0 | + | 0 | + | 0 | + | + | 0 | + | 0 | 0 | 0 | 0 | 0 | 0 | + | 0 | 0 | + | 0 |
| 89032-XY2 | d | + | 0 | + | 0 | + | 0 | + | 0 | + | + | + | 0 | + | 0 | 0 | 0 | 0 | + | 0 | + | 0 | 0 | + | 0 |
| | c | 0 | + | 0 | + | 0 | + | 0 | + | 0 | + | + | 0 | + | 0 | 0 | 0 | 0 | 0 | 0 | + | + | 0 | 0 | + |
| | b | + | 0 | + | 0 | + | 0 | + | 0 | + | + | + | 0 | + | 0 | 0 | 0 | 0 | + | 0 | 0 | 0 | 0 | + | 0 |
| | a | 0 | + | 0 | + | 0 | + | 0 | + | 0 | + | + | 0 | + | 0 | 0 | 0 | 0 | 0 | 0 | + | 0 | 0 | + | 0 |
| + =LOADED POSITION | | | | | | | | | | | | | | | | | | | | | | | | | |
| 0 =EMPTY POSITION | | | | | | | | | | | | | | | | | | | | | | | | | |

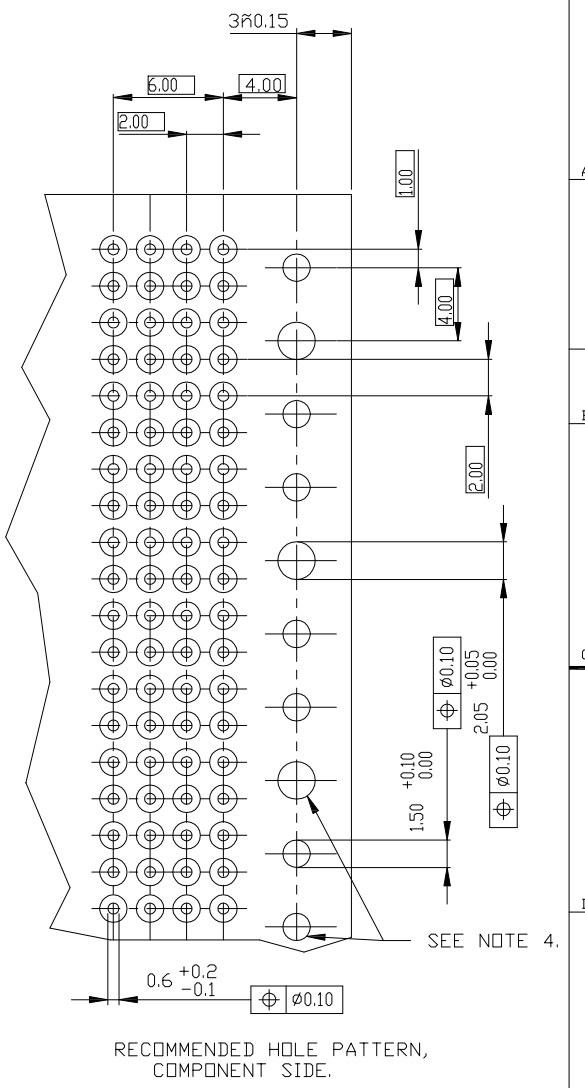


ASSEMBLY AFTER HOT RIVETTING.

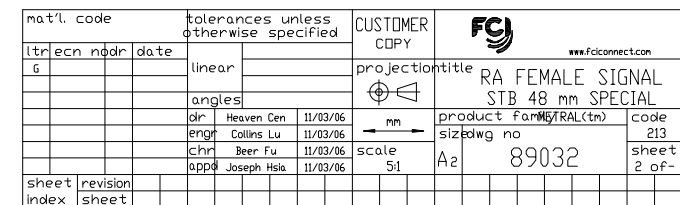
PC BOARD THICKNESS±0.20
(SEE TABLE)



- NOTES:
- 1 BODY MAT'L: LIQUID CRYSTAL POLYMER 30% GLASS FLAME RETARDANT ACC. UL 94-V0
 - 2 TERMINAL MATERIAL: PHOSPHOR BRONZE.
 - 3 PLATING SOLDER TAILS 2-8 um SnPb 90-97.
 - 4 INDICATED HOLES ARE UNPLATED.
 - 5 PRODUCT MARKING : PARTNUMBER & BATCH ID.
 - 6 DIAMOND LOCATION PEG ARE ONLY EXISTED ON THE BOTH SIDES OF PRODUCT.



| nat'l. code | | tolerances unless otherwise specified | | CUSTOMER COPY | | F.C.I. | |
|-------------|------------|---------------------------------------|----------|---------------|------------------|-------------------|--------------|
| l'techn | n°dr | date | linear | projection | title | product family | code |
| A | H30105 | PSC | 930222 | mm | RA FEMALE SIGNAL | STB 48 mm SPECIAL | 213 |
| B | H30759 | EFE | 940118 | mm | 89032 | | sheet 1 of 4 |
| C | H40118 | EFE | 940211 | mm | | | |
| D | H40811 | RV1 | 941212 | mm | | | |
| E | DG06-0448 | CenH | 11/03/06 | mm | | | |
| F | DG07-0171 | CenH | 05/25/07 | mm | | | |
| G | DG009-0068 | CenH | 06/06/09 | mm | | | |
| sheet | revision | G | G | G | G | | |
| Index | sheet | 1 | 2 | 3 | 4 | | |



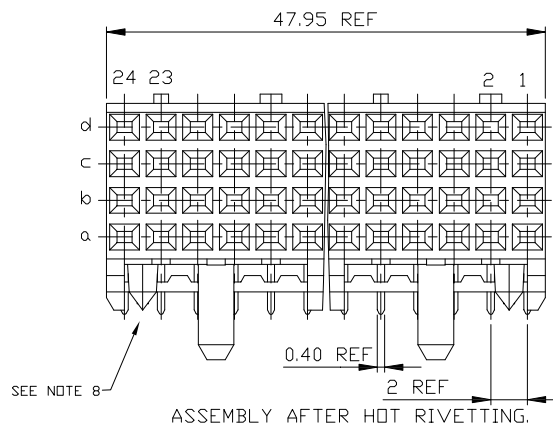
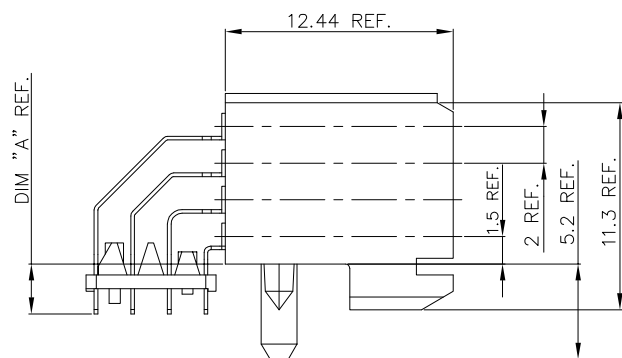
8

| PLATING CONTACT AREA: | |
|-----------------------|-------------------|
| DASH NR: | PERFORMANCE LEVEL |
| -1YY/1YYLF | TELCORDIA CO |
| -2YY/2YYLF | CUSTOMER SPECIAL |
| -3YY/3YYLF | CUSTOMER SPECIAL |

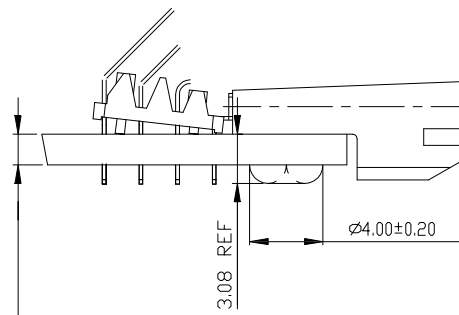
| PC BOARD VERSIONS | | |
|-------------------|---------------|---------|
| PRODUCTNR: | PCB THICKNESS | DIM "A" |
| 89032-X0Z | 1.6 | 2.90 |
| 89032-X1Z | 2.4 | 3.53 |

| LOADING CONFIGURATION | POSITION ROW | 24 | 23 | 22 | 21 | 20 | 19 | 18 | 17 | 16 | 15 | 14 | 13 | 12 | 11 | 10 | 9 | 8 | 7 | 6 | 5 | 4 | 3 | 2 | 1 |
|-----------------------|--------------|----|----|----|----|----|----|----|----|----|----|----|----|----|----|----|---|---|---|---|---|---|---|---|---|
| 89032-XY5/XY5LF | d | + | 0 | + | 0 | + | 0 | + | 0 | + | + | + | 0 | + | 0 | 0 | 0 | + | 0 | + | 0 | 0 | 0 | + | 0 |
| | c | 0 | + | 0 | + | 0 | + | 0 | + | 0 | + | + | 0 | + | 0 | 0 | 0 | + | 0 | 0 | 0 | 0 | 0 | 0 | + |
| | b | + | 0 | + | 0 | + | 0 | + | 0 | + | + | + | 0 | + | 0 | 0 | 0 | + | 0 | + | 0 | 0 | 0 | + | 0 |
| | a | 0 | + | 0 | + | 0 | + | 0 | + | 0 | + | + | 0 | + | 0 | 0 | 0 | + | 0 | 0 | 0 | 0 | 0 | + | 0 |
| 89032-XY6/XY6LF | d | + | 0 | + | 0 | + | 0 | + | 0 | + | + | + | 0 | + | 0 | 0 | 0 | + | 0 | + | 0 | 0 | 0 | + | 0 |
| | c | 0 | + | 0 | + | 0 | + | 0 | + | 0 | + | + | 0 | + | 0 | 0 | 0 | + | 0 | 0 | 0 | 0 | 0 | + | 0 |
| | b | + | 0 | + | 0 | + | 0 | + | 0 | + | + | + | 0 | + | 0 | 0 | 0 | + | 0 | + | 0 | 0 | 0 | + | 0 |
| | a | 0 | + | 0 | + | 0 | + | 0 | + | 0 | + | + | 0 | + | 0 | 0 | 0 | + | 0 | 0 | 0 | 0 | 0 | + | 0 |

+ =LOADED POSITION
0 =EMPTY POSITION

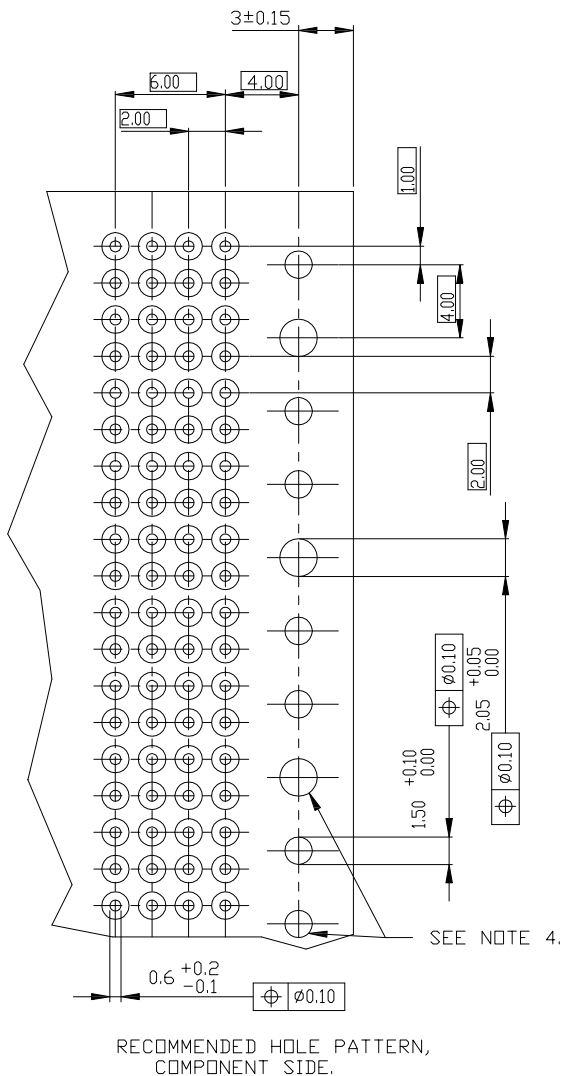


PC BOARD THICKNESS±0.20
(SEE TABLE)



NOTES:

- BODY MAT'L: LIQUID CRYSTAL POLYMER 30% GLASS
FLAME RETARDANT ACC. UL 94-V0
- TERMINAL MATERIAL: PHOSPHOR BRONZE.
- PLATING SOLDER TAILS 2-8 µm SnPb 90-97 OR 2-8 µm PURE
Sn FOR LEAD FREE.
- INDICATED HOLES ARE UNPLATED.
- PRODUCT MARKING: PART NUMBER & BATCH ID.
- THIS PRODUCT MEETS EUROPEAN UNION DIRECTIVES AND OTHER
COUNTRY REGULATIONS AS DESCRIBED IN GS-22-008
- THE HOUSING WILL WITHSTAND EXPOSURE TO 260DEGREE PEAK
TEMPERATURE FOR 10 SECONDS IN A WAVE SOLDER APPLICATION
- DIAMOND LOCATION PEG ARE ONLY EXISTED ON THE BOTH SIDES OF PRODUCT.



RECOMMENDED HOLE PATTERN,
COMPONENT SIDE.

| nat'l. code | | tolerances unless otherwise specified | | CUSTOMER COPY | | FCI | |
|-------------|----------|---------------------------------------|---|---------------|------|--------------------------|---------------------------|
| l | tr | ec | n | dr | date | linear | projection |
| g | | | | | | angles | title |
| | | | | | | dr Heaven Cen 11/03/06 | RA FEMALE SIGNAL |
| | | | | | | enr Collins Lu 11/03/06 | STB 48 mm SPECIAL |
| | | | | | | chr Beer Fu 11/03/06 | product family METAL (tm) |
| | | | | | | app Joseph Hsia 11/03/06 | code 213 |
| sheet | revision | scale 5:1 | | A2 | | 89032 | |
| index | sheet | | | | | sheet 4 of 4 | |