

BIPOLAR ANALOG INTEGRATED CIRCUIT

μ PC4559

HIGH PERFORMANCE DUAL OPERATIONAL AMPLIFIER

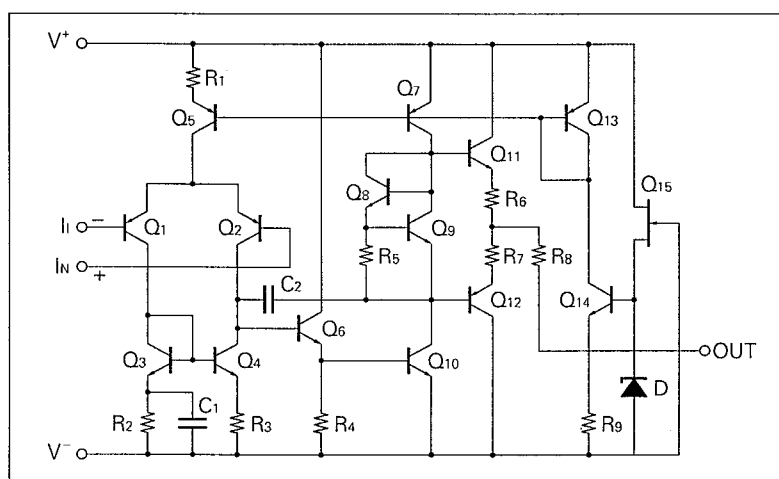
DESCRIPTION

The μ PC4559 is a dual operational amplifier having better slew rate and bandwidth than the μ PC4558C with satisfying unity gain frequency compensation. Having low noise characteristics, this device is very convenient to make active filters and other audio application circuits.

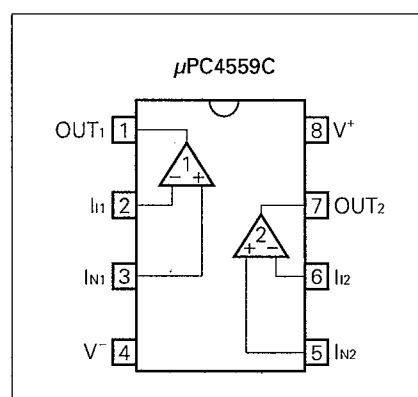
FEATURES

- Internal frequency compensation
- Low noise
- Output short circuit protection

EQUIVALENT CIRCUIT (1/2 Circuit)



CONNECTION DIAGRAM (Top View)



ORDERING INFORMATION

PART NUMBER	PACKAGE	QUALITY GRADE
μ PC4559C	8 PIN PLASTIC DIP (300 mil)	Standard

Please refer to "Quality grade on NEC Semiconductor Devices" (Document number IEI-1209) published by NEC Corporation to know the specifications of quality grade on the devices and its recommended applications.

ABSOLUTE MAXIMUM RATINGS ($T_a = 25\text{ }^{\circ}\text{C}$)

PARAMETER	SYMBOL	μ PC4559	UNIT
Voltage between V^+ and V^- (Note 1)	$V^+ - V^-$	-0.3 to +36	V
Differential Input Voltage	V_{ID}	± 30	V
Input Voltage (Note 2)	V_I	$V^- - 0.3$ to $V^+ + 0.3$	V
Output Voltage (Note 3)	V_O	$V^- - 0.3$ to $V^+ + 0.3$	V
Power Dissipation C Package (Note 4)	P_T	350	mW
Output Short Circuit Duration (Note 5)		Indefinite	sec
Operating Temperature Range	T_{opt}	-20 to +80	$^{\circ}\text{C}$
Storage Temperature Range	T_{stg}	-55 to +125	$^{\circ}\text{C}$

Note 1. Reverse connection of supply voltage can cause destruction.

Note 2. The input voltage should be allowed to input without damage or destruction. Even during the transition period of supply voltage, power on/off etc., this specification should be kept. The normal operation will establish when the both inputs are within the Common Mode Input Voltage Range of electrical characteristics.

Note 3. This specification is the voltage which should be allowed to supply to the output terminal from external without damage or destructive. Even during the transition period of supply voltage, power on/off etc., this specification should be kept. The output voltage of normal operation will be the Output Voltage Swing of electrical characteristics.

Note 4. Thermal derating factor is $-5.0\text{ mW}/^{\circ}\text{C}$ when ambient temperature is higher than $55\text{ }^{\circ}\text{C}$.

Note 5. Pay careful attention to the total power dissipation not to exceed the absolute maximum ratings, Note 4.

RECOMMENDED OPERATING CONDITIONS

CHARACTERISTIC	SYMBOL	MIN.	TYP.	MAX.	UNIT
Supply Voltage	V^{\pm}	± 4		± 16	V

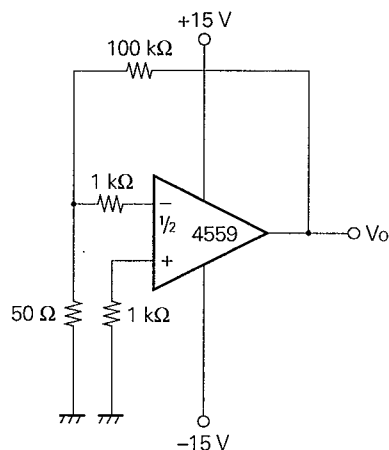
ELECTRICAL CHARACTERISTICS ($T_a = 25\text{ }^{\circ}\text{C}$, $V^{\pm} = \pm 15\text{ V}$)

CHARACTERISTIC	SYMBOL	MIN.	TYP.	MAX.	UNIT	CONDITIONS
Input Offset Voltage	V_{IO}		± 0.5	± 6.0	mV	$R_s \leq 10\text{ k}\Omega$
Input Offset Current (Note 6)	I_{IO}		± 5	± 200	nA	
Input Bias Current (Note 6)	I_B		60	500	nA	
Large Signal Voltage Gain	A_v	20000	100000			$R_L \geq 2\text{ k}\Omega$, $V_O = \pm 10\text{ V}$
Power Consumption	P_d		90	170	mW	$I_O = 0\text{ A}$, Both Amplifiers
Common Mode Rejection Ratio	CMR	70	90		dB	$R_s \leq 10\text{ k}\Omega$
Supply Voltage Rejection Ratio	SVR		30	150	$\mu\text{V/V}$	$R_s \leq 10\text{ k}\Omega$
Output Voltage Swing	V_{om}	± 12	± 14		V	$R_L \geq 10\text{ k}\Omega$
		± 10	± 13		V	$R_L \geq 2\text{ k}\Omega$
Common Mode Input Voltage Range	VICM	± 12	± 14		V	
Slew Rate	SR		2.0		V/ μs	$A_v = 1$
Input Equivalent Noise Voltage	V_n		6		$\mu\text{Vp-p}$	$R_s = 1\text{ k}\Omega$, $f = 1\text{ Hz}$ to 1 kHz
Channel Separation			105		dB	$f = 1\text{ kHz}$

Note 6. Input bias currents flow out from IC. Because each currents are base current of PNP-transistor on input stage.

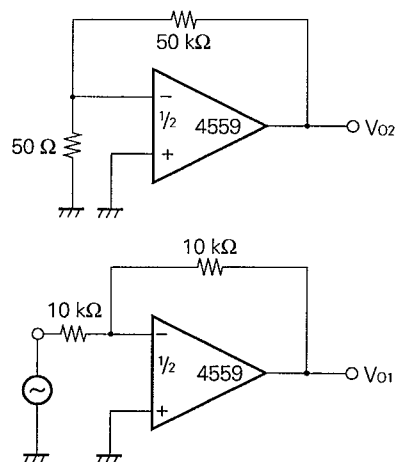
MEASUREMENT CIRCUIT

Fig. 1 Noise Measurement Circuit



$$V_n = \frac{V_o}{2000}$$

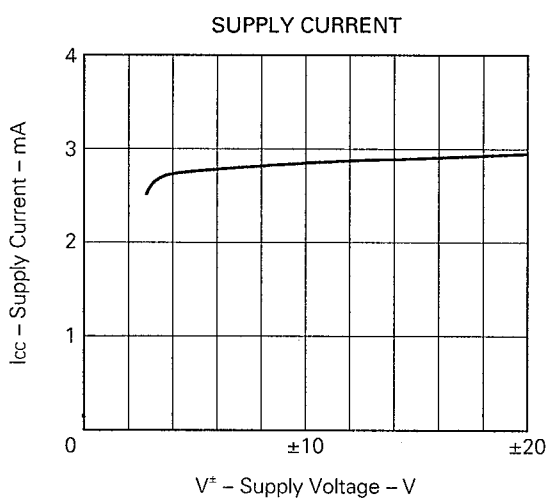
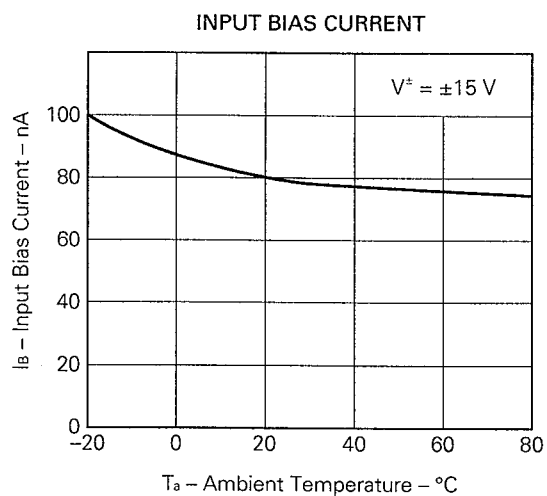
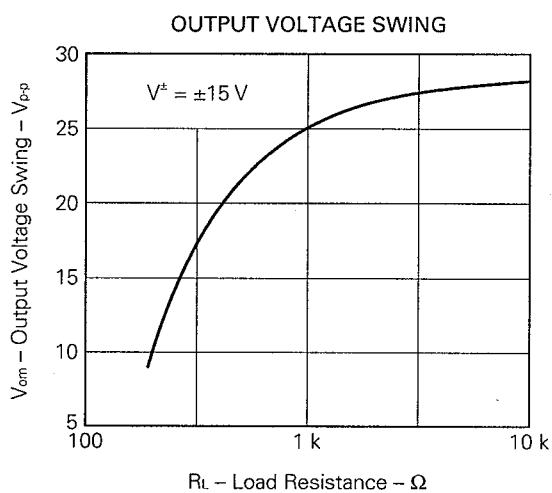
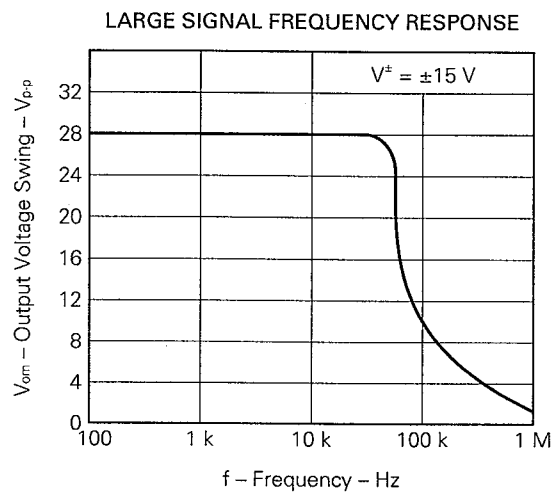
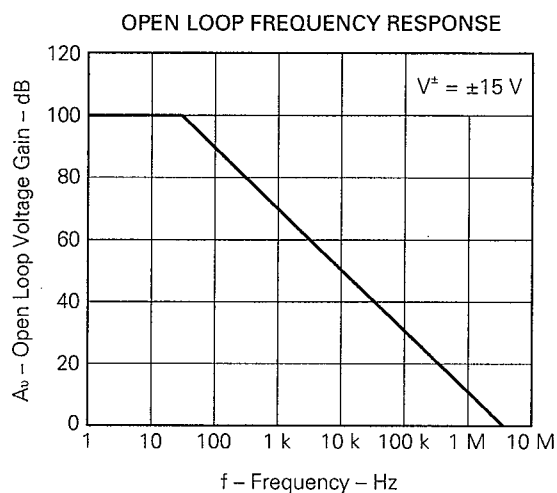
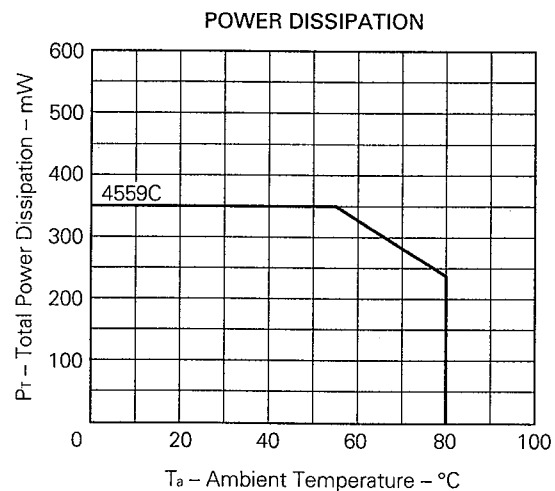
Fig. 2 Channel Separation Measurement Circuit



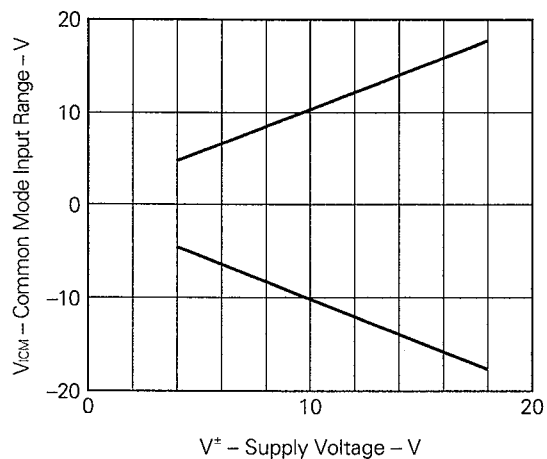
Channel separation

$$= \left| 20 \cdot \log \left(\frac{1}{1000} \cdot \frac{V_{o2}}{V_{o1}} \right) \right|$$

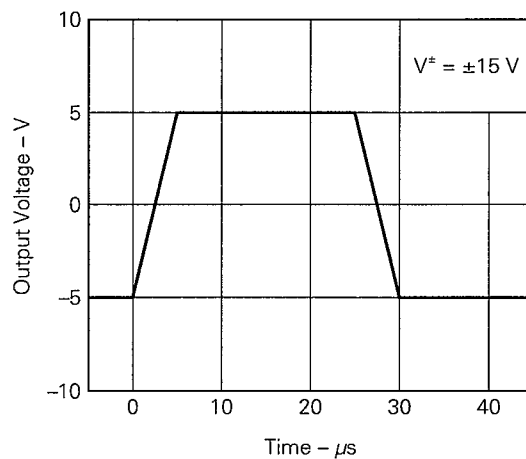
TYPICAL PERFORMANCE CHARACTERISTICS ($T_a = 25^\circ\text{C}$, TYP.)



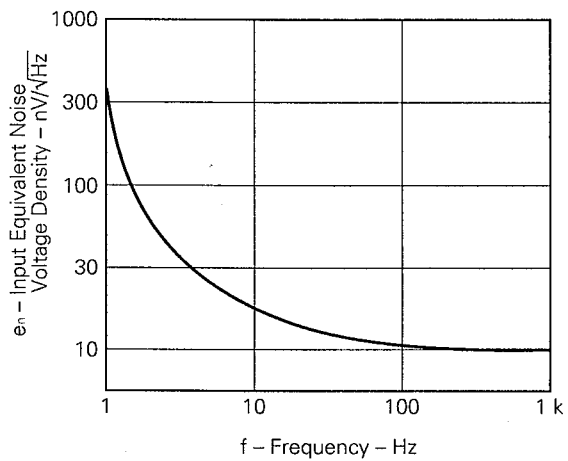
COMMON MODE INPUT VOLTAGE RANGE



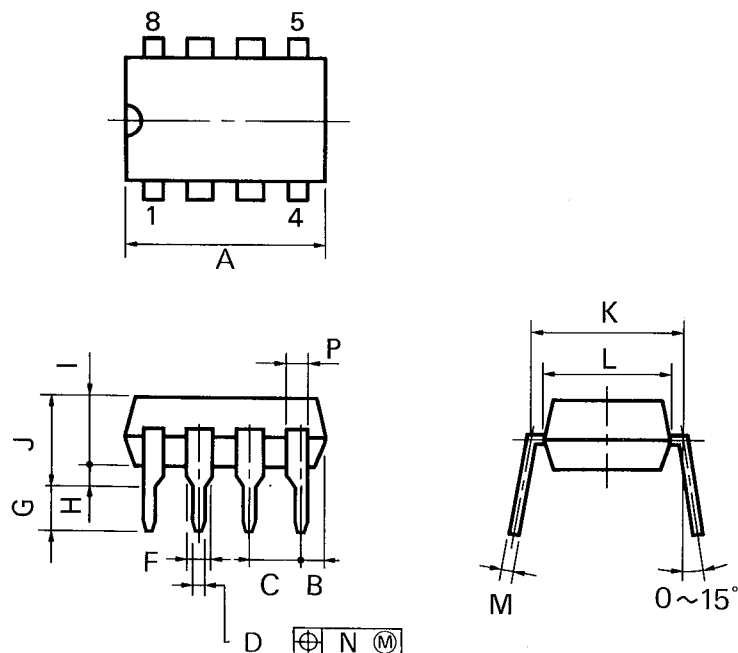
VOLTAGE FOLLOWER PULSE RESPONSE



INPUT EQUIVALENT NOISE VOLTAGE DENSITY



8PIN PLASTIC DIP (300 mil)



P8C-100-300B,C

NOTES

- Each lead centerline is located within 0.25 mm (0.01 inch) of its true position (T.P.) at maximum material condition.
- Item "K" to center of leads when formed parallel.

ITEM	MILLIMETERS	INCHES
A	10.16 MAX.	0.400 MAX.
B	1.27 MAX.	0.050 MAX.
C	2.54 (T.P.)	0.100 (T.P.)
D	0.50 ± 0.10	0.020 $\begin{smallmatrix} +0.004 \\ -0.005 \end{smallmatrix}$
F	1.4 MIN.	0.055 MIN.
G	3.2 ± 0.3	0.126 ± 0.012
H	0.51 MIN.	0.020 MIN.
I	4.31 MAX.	0.170 MAX.
J	5.08 MAX.	0.200 MAX.
K	7.62 (T.P.)	0.300 (T.P.)
L	6.4	0.252
M	0.25 $\begin{smallmatrix} +0.10 \\ -0.05 \end{smallmatrix}$	0.010 $\begin{smallmatrix} +0.004 \\ -0.003 \end{smallmatrix}$
N	0.25	0.01
P	0.9 MIN.	0.035 MIN.

RECOMMENDED SOLDERING CONDITIONS

The following conditions (see table below) must be met when soldering this product.

Please consult with our sales offices in case other soldering process is used, or in case soldering is done under different conditions.

TYPES OF THROUGH HOLE DEVICE

[μ PC4559C]

Soldering method	Soldering conditions	Recommended condition symbol
Wave soldering	Solder temperature: 260 °C or below, Flow time: 10 seconds or below	

[MEMO]

No part of this document may be copied or reproduced in any form or by any means without the prior written consent of NEC Corporation. NEC Corporation assumes no responsibility for any errors which may appear in this document.

NEC Corporation does not assume any liability for infringement of patents, copyrights or other intellectual property rights of third parties by or arising from use of a device described herein or any other liability arising from use of such device. No license, either express, implied or otherwise, is granted under any patents, copyrights or other intellectual property rights of NEC Corporation or others.

The devices listed in this document are not suitable for use in aerospace equipment, submarine cables, nuclear reactor control systems and life support systems. If customers intend to use NEC devices for above applications or they intend to use "Standard" quality grade NEC devices for applications not intended by NEC, please contact our sales people in advance.

Application examples recommended by NEC Corporation.

Standard: Computer, Office equipment, Communication equipment, Test and Measurement equipment, Machine tools, Industrial robots, Audio and Visual equipment, Other consumer products, etc.

Special: Automotive and Transportation equipment, Traffic control systems, Antidisaster systems, Anticrime systems, etc.