

# 3-terminal Filters(SMD) For Signal Line

Conformity to RoHS Directive

## MEM Series MEM2012T Type

### FEATURES

- Multilayer chip EMC filter utilizing a T-type circuit.
- Entirely monolithic structure results in high reliability.
- Due to closed magnetic circuit architecture, high-density installation becomes possible, and crosstalk generation is prevented.
- Steep attenuation characteristic plot. Highly effective noise suppression.
- Covers a wide range of frequencies.
- MEM2012T is a coil type EMC filter.

### APPLICATIONS

Computer and computer peripherals, VCRs, TVs, car audio equipment, printers, game machines, etc.

### TEMPERATURE RANGES

|                   |              |
|-------------------|--------------|
| Operating/Storage | -40 to +85°C |
|-------------------|--------------|

### PRODUCT IDENTIFICATION

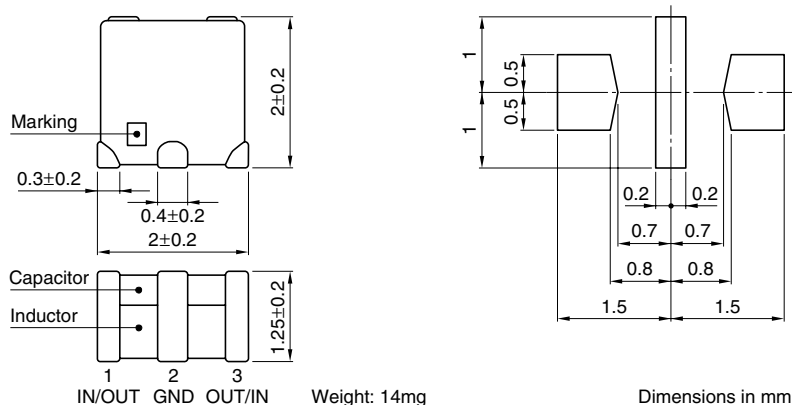
| MEM | 2012 | T   | 10R0 | T   |
|-----|------|-----|------|-----|
| (1) | (2)  | (3) | (4)  | (5) |

- (1)Series name  
(2)Dimensions L×W  
(3)T-type circuit  
(4)Cutoff frequency 10R0:10MHz  
(5)Packaging style T:Taping

### PACKAGING STYLE AND QUANTITIES

| Packaging style | Quantity         |
|-----------------|------------------|
| Taping          | 1000 pieces/reel |

### SHAPES AND DIMENSIONS/RECOMMENDED PC BOARD PATTERN



### ELECTRICAL CHARACTERISTICS

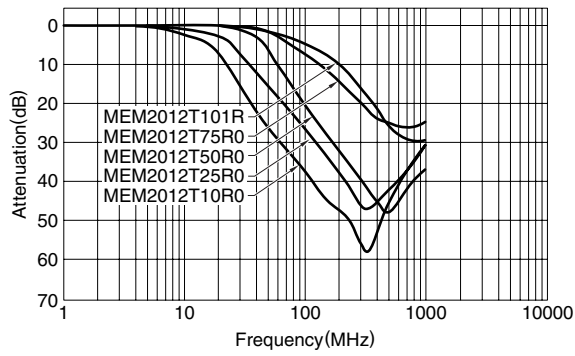
| Part No.     | Cutoff frequency (MHz) | Insertion loss (dB)min. | Rated voltage Edc(V)max. | Rated current (mA)max. |
|--------------|------------------------|-------------------------|--------------------------|------------------------|
| MEM2012T10R0 | 10                     | 20[40 to 900MHz]        | 10                       | 100                    |
| MEM2012T25R0 | 25                     | 20[80MHz to 1GHz]       | 10                       | 150                    |
| MEM2012T50R0 | 50                     | 20[150MHz to 1.2GHz]    | 10                       | 150                    |
| MEM2012T75R0 | 75                     | 20[300MHz to 1.7GHz]    | 10                       | 250                    |
| MEM2012T101R | 100                    | 20[400MHz to 1.7GHz]    | 10                       | 250                    |

- Conformity to RoHS Directive: This means that, in conformity with EU Directive 2002/95/EC, lead, cadmium, mercury, hexavalent chromium, and specific bromine-based flame retardants, PBB and PBDE, have not been used, except for exempted applications.
- Please contact our Sales office when your application are considered the following:  
The device's failure or malfunction may directly endanger human life (e.g. application for automobile/aircraft/medical/nuclear power devices, etc.)

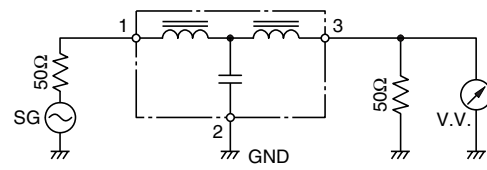
• All specifications are subject to change without notice.

## TYPICAL ELECTRICAL CHARACTERISTICS

### ATTENUATION vs. FREQUENCY CHARACTERISTICS



### MEASURING CIRCUIT



## RECOMMENDED SOLDERING CONDITION

### REFLOW SOLDERING

