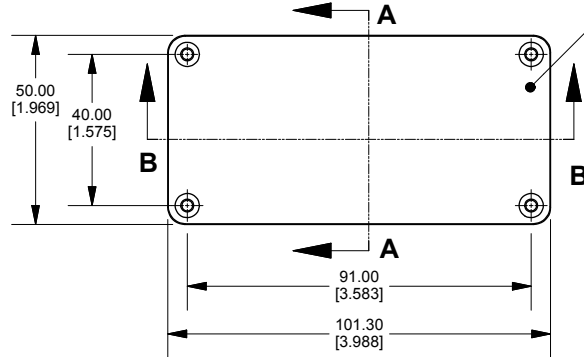
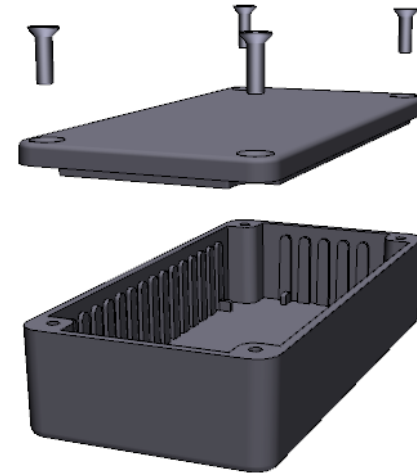
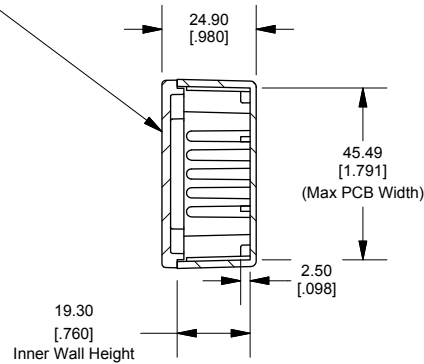
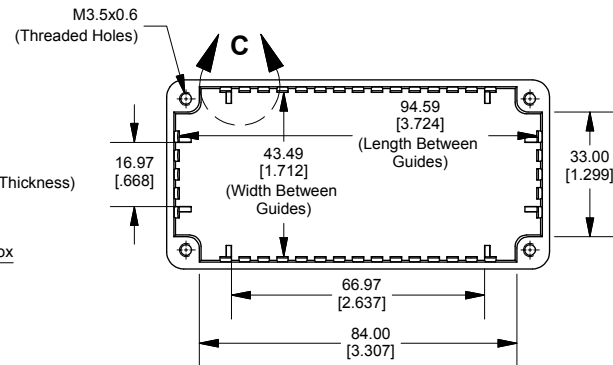
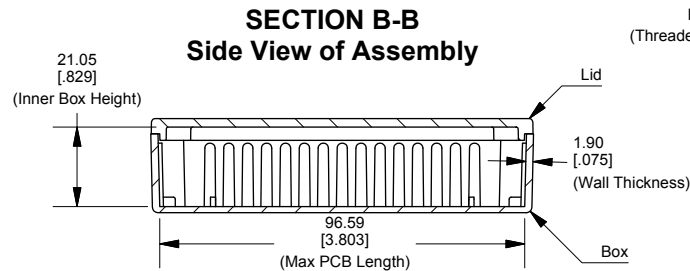
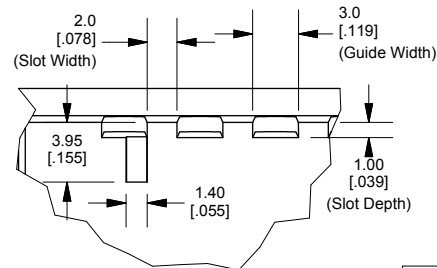


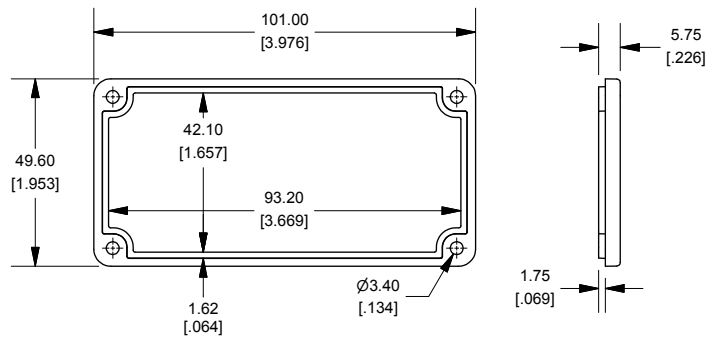
Top View of Assembly

SECTION A-A  
End View of Assembly

Top View Looking Inside Box

SECTION B-B  
Side View of AssemblyDETAIL C  
Top View - Interior Features

Lid



Enclosures can be Factory Modified ( Milling, Drilling, Printing etc.)  
Contact Factory [mjm@hammondmfg.com](mailto:mjm@hammondmfg.com) for quotes  
Solid models of this enclosure available in STEP or IGES.

**NOTE**

Purchased assembly includes box, lid and 4 cover screws.  
Box and lid are made from Diecast Aluminum Alloy.

**PART NUMBERS****1590L Enclosure**

Natural Finish Enclosure

1590L

Black Textured Enclosure

1590LBK

**ACCESSORIES**

Recommended Torque: 75 ozf.in / 55 cN.m

Plated Cover Screws (Pkg 100)

1550MS100

[M3.5 x 12mm]

Black Cover Screws (Pkg 100)

1550MS100BK

[M3.5 x 12mm]

Dimensions:  
mm  
[inches]



# Mouser Electronics

Authorized Distributor

Click to View Pricing, Inventory, Delivery & Lifecycle Information:

[Hammond:](#)

[1590LBK](#) [1590L](#)