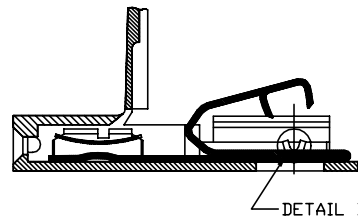
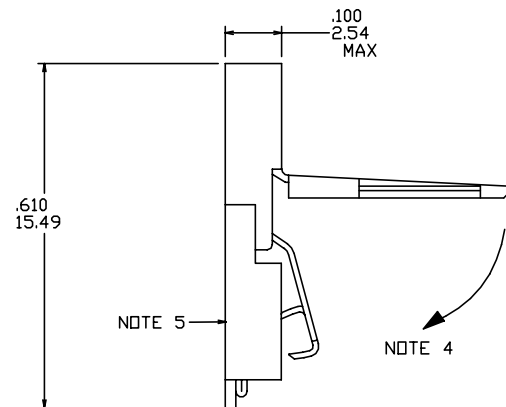
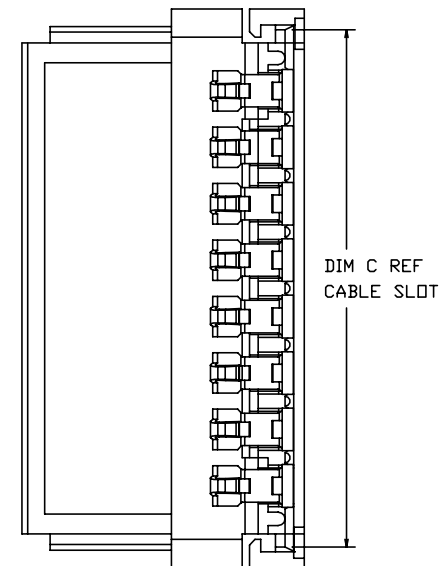
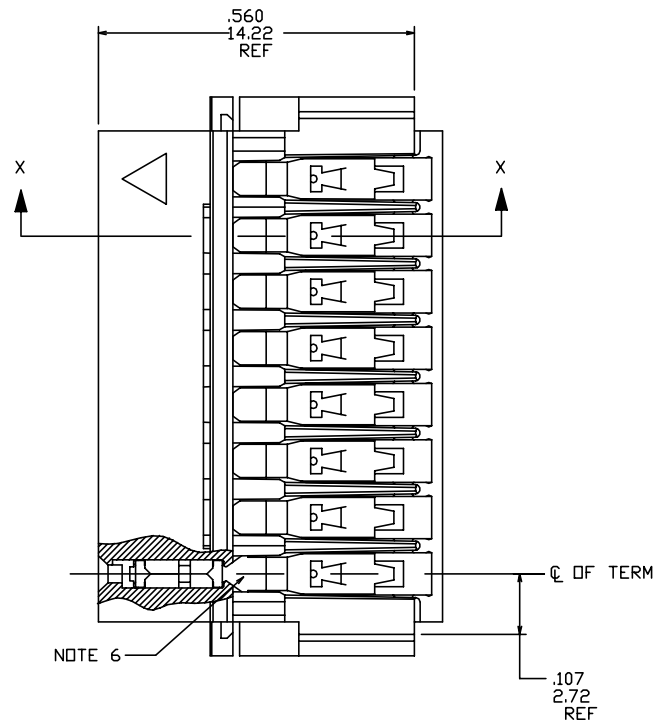
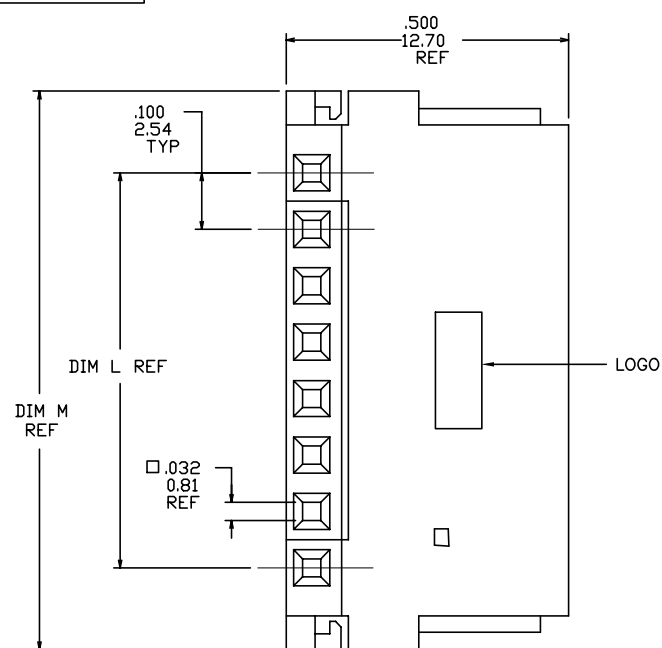



PRODUCT NUMBER
SEE TABLE



SECTION X-X



DETAIL Z
SCALE 6/1

mat'l. code				surface ISO 1302 ✓		tolerance ISO 406 ISO 1101		projection 		product family CLINCHER			
ltr		ecn		nodr		date		tolerances unless otherwise specified				title	
AN		BX-N-010493		ZK		06/03/12		angles		linea		CLINCHER™ RECEPTACLE ASSEMBLY	
AH		V60509		HTB		3/5/96		0°±2°		XXXX.01/0.XX±0.3 XXXX±.005/0.XX±0.13 XXXX±.0020/0.XXX±0.05		INCH/MM	
AJ		M05-0087		MHT		6/15/05		dr		T.BREWBAKER		5/17/94	
AK		M06-0233		AGS		6/12/06		engr		T. HANNA		5/17/94	
AL		M07-0088		MHT		2/06/07		chr		J.MURPHY		5/17/94	
AM		M09-0062		CMR		4/09/09		appd		T. HANNA		5/17/94	
sheet		revisio		AN		AN		AN		AN		AN	
index		sheet		1		2		3		4		5	

PLATING AVAILABLE

PLATING CODE	TERMINAL	SPRING
1	100u"/2.54u MIN. THICK PURE TIN	10u"/.25u MIN. THICK PURE TIN
2	30u"/.76u MIN. GOLD OR GXT STRIPE IN BOX AREA NOTE 12	3u"/.08u MIN. GOLD OVER 50u"/1.27u MIN. NICKLE

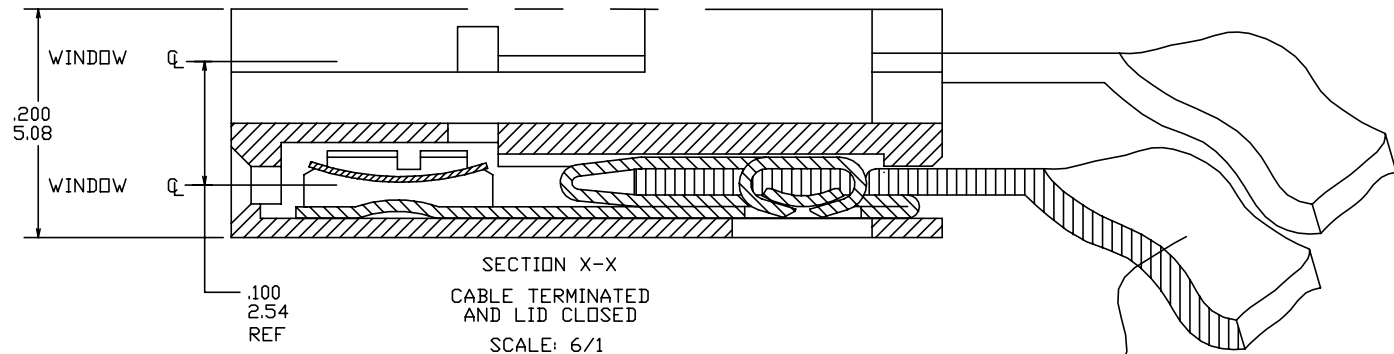
PRODUCT NUMBER

65801-XXXLF

LEAD FREE OPTION
NOTE 9,10

NO OF POSITIONS
AND PLATING

BASE PART NUMBER



NOTES:

- MOLDING MAT'L: THERMOPLASTIC, FLAME RETARDANT PER UL 94V-0. COLOR: BLUE.
- TERMINAL MAT'L: 1/2 HARD CuNi ALLOY, UNS-C72500. PLATING: SEE TABULATION AND PLATING TABLE.
- SPRING MAT'L: 1/2 HARD BeCu ALLOY, UNS-C17200. PLATING: SEE TABULATION AND PLATING TABLE.
- LATCH SWINGS CLOSED AFTER TERMINATION MAINTAINING A MAX OVER ALL HEIGHT OF .100/2.54
- LABEL IN THIS AREA P/N AND DATE LOT CODE (WEEK AND YEAR) ON DASH No.-067 AND -167 ONLY.
- KNURL MARK INDICATES FOR USE WITH INK TERMINATION. CONSULT WITH BERG ELECTRONICS TECHNICAL REPRESENTATIVE FOR SPECIFIC APPLICATIONS.
- POSITION NUMBERS INITIATE FROM TRIANGULAR MARK ON HOUSING. SEE TABULATION FOR POSITION No CLOSED AND TERMINAL No ABSENT. FIG A SHOWS POSITION No 2 CLOSED.
- AN EIGHT DIGIT PART NUMBER FOLLOWED BY A "J" INDICATES INVENTORY FOR JAPAN ONLY.
- ADD "LF" SUFFIX AT THE END OF PART NUMBER FOR LEAD FREE OPTION.
- THIS PRODUCT MEETS EUROPEAN UNION DIRECTIVES AND OTHER COUNTRY REGULATION AS DESCRIBED IN GS-22-008.
- THE PRODUCT IS NOT INTENDED TO BE EXPOSED TO A MANUFACTURING SOLDER PROCESS
- PLATING OPTIONS:
MAY BE EITHER GOLD OR GXT PLATED AT MANUFACTURER'S OPTION.

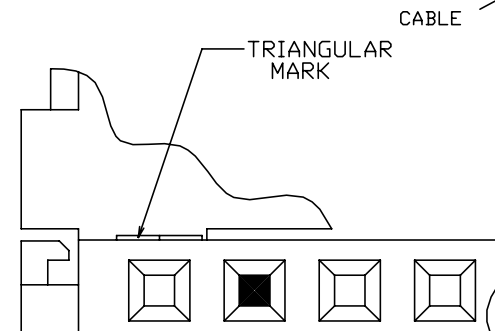


FIG A
NOTE 7

mat'l. code	surface ISO 1302 ✓	tolerance ISO 406 ISO 1101	projection INCH/MM	product family CLINGER
ltr ecn nodr date	tolerances unless otherwise specified	linea	scale 3:1	title CLINGER™ RECEPTACLE ASSEMBLY
AN	angles 0°±2'	XXXX.01/0.XX±0.3 XXXX.005/0.XX±0.13 XXXX.0020/0.XX±0.05	INCH/MM	dwg no 65801
	dr T.BREWBAKER 5/17/94	engr T. HANNA 5/17/94	chr J.MURPHY 5/17/94	sheet 2 of 7 size A3
	appd T. HANNA 5/17/94			type Product Customer Drawing
sheet index	revision sheet			

1

2

3

4

5

6

PRODUCT NO. NOTE 9	NO. OF	DIM. L	DIM. L	DIM. M	DIM. M	DIM. C	DIM. C	PLATING	TERMINATION	NOTES
	POSITIONS	ENGLISH	METRIC	ENGLISH	METRIC	ENGLISH	METRIC	CODE	NOTE 6	
65801-033	4	0.300	7.62	0.590	14.99	0.515	13.08	2	CONVENTIONAL	-
65801-034	5	0.400	10.16	0.690	17.53	0.615	15.62	2	CONVENTIONAL	-
65801-035	6	0.500	12.70	0.790	20.07	0.715	18.16	2	CONVENTIONAL	-
65801-036	7	0.600	15.24	0.890	22.61	0.815	20.70	2	CONVENTIONAL	-
65801-037	8	0.700	17.78	0.990	25.15	0.915	23.24	2	CONVENTIONAL	-
65801-038	9	0.800	20.32	1.090	27.69	1.015	25.78	2	CONVENTIONAL	-
65801-039	10	0.900	22.86	1.190	30.23	1.115	28.32	2	CONVENTIONAL	-
65801-040	11	1.000	25.40	1.290	32.77	1.215	30.86	2	CONVENTIONAL	-
65801-041	12	1.100	27.94	1.390	35.31	1.315	33.40	2	CONVENTIONAL	-
65801-042	13	1.200	30.48	1.490	37.85	1.415	35.94	2	CONVENTIONAL	-
65801-043	14	1.300	33.02	1.590	40.39	1.515	38.48	2	CONVENTIONAL	-
65801-044	15	1.400	35.56	1.690	42.93	1.615	41.02	2	CONVENTIONAL	-
65801-045	16	1.500	38.10	1.790	45.47	1.715	43.56	2	CONVENTIONAL	-
65801-046	17	1.600	40.64	1.890	48.01	1.815	46.10	2	CONVENTIONAL	-
65801-047	18	1.700	43.18	1.990	50.55	1.915	48.64	2	CONVENTIONAL	-
65801-048	19	1.800	45.72	2.090	53.09	2.015	51.18	2	CONVENTIONAL	-
65801-049	20	1.900	48.26	2.190	55.63	2.115	53.72	2	CONVENTIONAL	-
65801-050	21	2.000	50.80	2.290	58.17	2.215	56.26	2	CONVENTIONAL	-
65801-051	22	2.100	53.34	2.390	60.71	2.315	58.80	2	CONVENTIONAL	-
65801-052	23	2.200	55.88	2.490	63.25	2.415	61.34	2	CONVENTIONAL	-
65801-053	24	2.300	58.42	2.590	65.79	2.515	63.88	2	CONVENTIONAL	-
65801-054	25	2.400	60.96	2.690	68.33	2.615	66.42	2	CONVENTIONAL	-
65801-055	26	2.500	63.50	2.790	70.87	2.715	68.96	2	CONVENTIONAL	-
65801-056	27	2.600	66.04	2.890	73.41	2.815	71.50	2	CONVENTIONAL	-
65801-057	28	2.700	68.58	2.990	75.95	2.915	74.04	2	CONVENTIONAL	-
65801-058	29	2.800	71.12	3.090	78.49	3.015	76.58	2	CONVENTIONAL	-
65801-059	30	2.900	73.66	3.190	81.03	3.115	79.12	2	CONVENTIONAL	-
65801-060	31	3.000	76.20	3.290	83.57	3.215	81.66	2	CONVENTIONAL	-
65801-061	32	3.100	78.74	3.390	86.11	3.315	84.20	2	CONVENTIONAL	-
65801-062	3	0.200	5.08	0.490	12.45	0.415	10.54	2	CONVENTIONAL	-
65801-063	2	0.100	2.54	0.390	9.91	0.315	8.00	2	CONVENTIONAL	-
65801-064	34	3.300	83.82	3.590	91.19	3.515	89.28	1	CONVENTIONAL	-
65801-065	33	3.200	81.28	3.490	88.65	3.415	86.74	1	CONVENTIONAL	-
65801-066	34	3.300	83.82	3.590	91.19	3.515	89.28	2	CONVENTIONAL	-
65801-067	12	1.100	27.94	1.390	35.31	1.315	33.40	2	CONVENTIONAL	NOTE 5

mat'l. code

surface
ISO 1302 ✓

tolerance
ISO 406
ISO 1101

projection

product family
CLINCHER

title
CLINCHER™ RECEPTACLE ASSEMBLY

dwg no
65801

sheet 4 of 7

size
A3

type
Product Customer Drawing

revision
sheet

index

FCIconnect.com

Copyright FCI

Form: A3

1

2

3

4

5

6

PDS: Rev :AN

STATUS: Released

Printed: Mar 07, 2012

C

D

D

1				2				3				4				5				6			
PRODUCT NO. NOTE 9	NO. OF	DIM. L	DIM. L	DIM. M	DIM. M	DIM. C	DIM. C	PLATING	TERMINATION	NOTES													
	POSITIONS	ENGLISH	METRIC	ENGLISH	METRIC	ENGLISH	METRIC	CODE	NOTE 6														
65801-133	4	0.300	7.62	0.590	14.99	0.515	13.08	2	INK	-													
65801-134	5	0.400	10.16	0.690	17.53	0.615	15.62	2	INK	-													
65801-135	6	0.500	12.70	0.790	20.07	0.715	18.16	2	INK	-													
65801-136	7	0.600	15.24	0.890	22.61	0.815	20.70	2	INK	-													
65801-137	8	0.700	17.78	0.990	25.15	0.915	23.24	2	INK	-													
65801-138	9	0.800	20.32	1.090	27.69	1.015	25.78	2	INK	-													
65801-139	10	0.900	22.86	1.190	30.23	1.115	28.32	2	INK	-													
65801-140	11	1.000	25.40	1.290	32.77	1.215	30.86	2	INK	-													
65801-141	12	1.100	27.94	1.390	35.31	1.315	33.40	2	INK	-													
65801-142	13	1.200	30.48	1.490	37.85	1.415	35.94	2	INK	-													
65801-143	14	1.300	33.02	1.590	40.39	1.515	38.48	2	INK	-													
65801-144	15	1.400	35.56	1.690	42.93	1.615	41.02	2	INK	-													
65801-145	16	1.500	38.10	1.790	45.47	1.715	43.56	2	INK	-													
65801-146	17	1.600	40.64	1.890	48.01	1.815	46.10	2	INK	-													
65801-147	18	1.700	43.18	1.990	50.55	1.915	48.64	2	INK	-													
65801-148	19	1.800	45.72	2.090	53.09	2.015	51.18	2	INK	-													
65801-149	20	1.900	48.26	2.190	55.63	2.115	53.72	2	INK	-													
65801-150	21	2.000	50.80	2.290	58.17	2.215	56.26	2	INK	-													
65801-151	22	2.100	53.34	2.390	60.71	2.315	58.80	2	INK	-													
65801-152	23	2.200	55.88	2.490	63.25	2.415	61.34	2	INK	-													
65801-153	24	2.300	58.42	2.590	65.79	2.515	63.88	2	INK	-													
65801-154	25	2.400	60.96	2.690	68.33	2.615	66.42	2	INK	-													
65801-155	26	2.500	63.50	2.790	70.87	2.715	68.96	2	INK	-													
65801-156	27	2.600	66.04	2.890	73.41	2.815	71.50	2	INK	-													
65801-157	28	2.700	68.58	2.990	75.95	2.915	74.04	2	INK	-													
65801-158	29	2.800	71.12	3.090	78.49	3.015	76.58	2	INK	-													
65801-159	30	2.900	73.66	3.190	81.03	3.115	79.12	2	INK	-													
65801-160	31	3.000	76.20	3.290	83.57	3.215	81.66	2	INK	-													
65801-161	32	3.100	78.74	3.390	86.11	3.315	84.20	2	INK	-													
65801-162	3	0.200	5.08	0.490	12.45	0.415	10.54	2	INK	-													
65801-163	2	0.100	2.54	0.390	9.91	0.315	8.00	2	INK	-													
65801-164				U N A S S I G N E D																			
65801-165				U N A S S I G N E D																			
65801-166	34	3.300	83.82	3.590	91.19	3.515	89.28	2	INK	-													
65801-167	12	1.100	27.94	1.390	35.31	1.315	33.40	2	INK	NOTE 5													

mat'l. code				surface / tolerance ISO 1302 ✓ / ISO 406 ISO 1101				product family CLINCHER			
ltr ecn nodr date				tolerances unless otherwise specified				title			
AN				angles linear $\frac{.001 \pm .01 / .001 \pm .03}{.001 \pm .005 / .001 \pm .01}$				INCH/MM			
				0" ± .2"				scale 3:1			
				dr T. BREWBAKER 5/17/94				dwg no sheet 6 of 7 size			
				engr T. HANNA 5/17/94				65801 A3			
				chr J. MURPHY 5/17/94							
				appd T. HANNA 5/17/94				type Product Customer Drawing			
sheet index		revision sheet									

1

2

3

4

5

6

PRODUCT NO. NOTE 9	NO. OF POSITIONS	DIM. L ENGLISH	DIM. L METRIC	DIM. M ENGLISH	DIM. M METRIC	DIM. C ENGLISH	DIM. C METRIC	PLATING CODE	TERMINATION NOTE 6	CLOSED POS. NOTE 7	TERMINAL ABSENT NOTE 7
65801-201	16	1.500	38.10	1.790	45.47	1.715	43.56	1	CONVENTIONAL	4	4.5.6
65801-202	5	0.400	10.16	0.690	17.53	0.615	15.62	2	CONVENTIONAL	3	3
65801-203	7	0.600	15.24	0.890	22.61	0.815	20.70	2	CONVENTIONAL	6	1.2.6.7
65801-204	10	0.900	22.86	1.190	30.23	1.115	28.32	1	CONVENTIONAL	4	4
65801-205	6	0.500	12.70	0.790	20.07	0.715	18.16	1	CONVENTIONAL	5	5
65801-206	5	0.400	10.16	0.690	17.53	0.615	15.62	1	CONVENTIONAL	4	4
65801-207	7	0.600	15.24	0.890	22.61	0.815	20.70	2	CONVENTIONAL	N/A	1.2.6.7
65801-208	4	0.300	7.62	0.590	14.99	0.515	13.08	1	CONVENTIONAL	N/A	2.3
65801-209	3	0.200	5.08	0.490	12.45	0.415	10.54	1	CONVENTIONAL	N/A	2

FCI


FCIconnect.com

Copyright FCI

mat'l. code

surface
ISO 1302 ✓

tolerance
ISO 406
ISO 1101

projection


product family
CLINCHER

ltr ecn nodr date

tolerances unless otherwise specified

title
CLINCHER™ RECEPTACLE ASSEMBLY

AN

angles
0°±2°

linear
.XX±.01/0.X.3
.XXX±.005/0.XXX.13
.XXXX±.0020/0.XXX±0.051

INCH/MM

scale 3:1

dr T.BREWBAKER 5/17/94

engr T. HANNA 5/17/94

chr J.MURPHY 5/17/94

appd T. HANNA 5/17/94

FCI

dwg no 65801

sheet 7 of 7

size A3

type Product Customer Drawing

sheet index

revision sheet

41

STATUS Released

Printed: Mar 07, 2012

Form: A3

1

2

3

4

5

6

Mouser Electronics

Authorized Distributor

Click to View Pricing, Inventory, Delivery & Lifecycle Information:

FCI:

[65801-163](#)