

Low-Current Superhet Remote Control Receiver

Description

The U4311B is a monolithic integrated circuit in bipolar technology for low-current UHF remote control super-heterodyne receivers in amplitude- or frequency-modulated mode. Typical applications are keyless car

lock-, alarm- or tele-control remote indication systems. Especially for automotive applications, it supports a superhet design with about 1 mA total current consumption as required by the car manufacturers.

Features

- Usable for amplitude- and frequency-modulated transmission systems
- Extremely low quiescent current (approximately 1 mA in standby mode due to wake-up concept)
- Wide power supply voltage range 3 to 13 V
- Sensitive IF amplifier for 10.7-MHz operating frequency
- Logarithmic AM demodulator
- FM demodulator
- Monoflop exit to wake up a microcontroller
- High-performance operational amplifier to realize a data recovering filter
- Non-inverting clamping comparator with amplitude-dependent hysteresis for data regeneration

Block Diagram

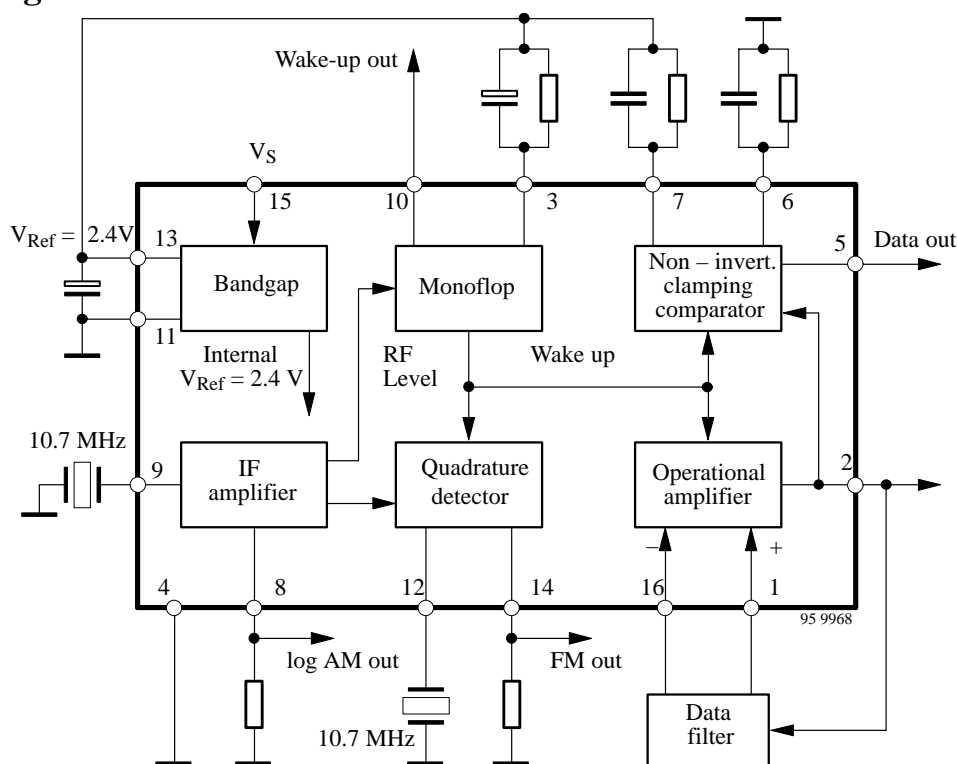
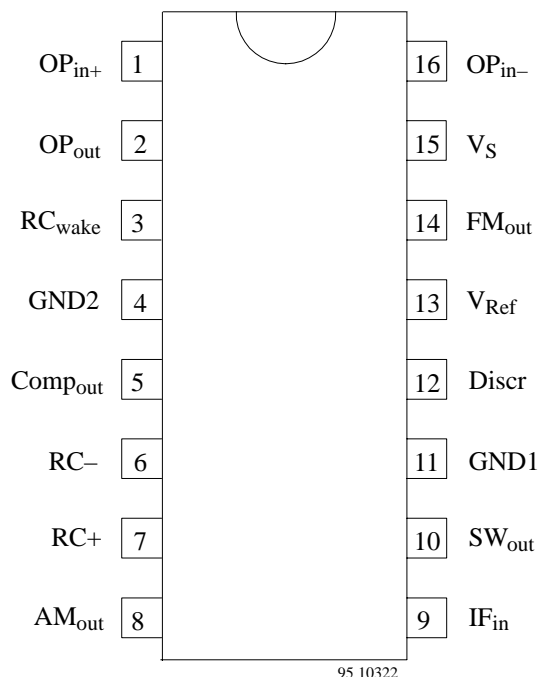


Figure 1. Block diagram

Ordering Information

Extended Type Number	Package	Remarks
U4311B-C	DIP16	
U4311B-CFL	SO16L	

Pin Description



Pin	Symbol	Function
1	OP _{in+}	OP amplifier non-inverted input
2	OP _{out}	OP amplifier output
3	RC _{wake}	RC wake-up reset time
4	GND2	Ground of the logical circuits
5	Comp _{out}	Comparator output
6	RC ₋	Comparator time constant
7	RC ₊	Comparator time constant
8	AM _{out}	AM current output
9	IF _{in}	IF input
10	SW _{out}	Wake-up output
11	GND1	Ground of the analog circuits
12	Discr	FM discriminator tank
13	V _{Ref}	Reference voltage
14	FM _{out}	FM discriminator output
15	V _S	Supply voltage
16	OP _{in-}	OP amplifier inverted input

Internal connections see figures 4 to 19

Figure 2. Pin description

Absolute Maximum Ratings

Parameters	Symbol	Value	Unit
Supply voltage	V _S	13	V
Power dissipation T _{amb} = 85°C	P _{tot}	400	mW
Junction temperature	T _j	125	°C
Ambient temperature	T _{amb}	-40 to +85	°C
Storage temperature	T _{stg}	-55 to +125	°C

Thermal Resistance

Parameters	Symbol	Value	Unit
Junction ambient DIP16	R _{thJA}	120	K/W
Junction ambient SO16L	R _{thJA}	100	K/W

Electrical Characteristics

$V_S = 5\text{ V}$, $T_{\text{amb}} = 25^\circ\text{C}$, $f_{\text{in}} = 10.7\text{ MHz}$; FM part: $f_{\text{mod}} = 1\text{ kHz}$, $f_{\text{dev}} = 22.5\text{ kHz}$; AM part: $f_{\text{mod}} = 1\text{ kHz}$, $m = 100\%$ unless otherwise specified

Parameters	Test Conditions / Pins		Symbol	Min.	Typ.	Max.	Unit
Characteristics							
Supply-voltage range	Pin 15		V _S	3		12	V
Quiescent supply current	Pin 15		I _q		1	1.3	mA
Active supply current	Pin 15		I _{act}		2.8	3.6	mA
Bandgap							
Regulated voltage	Pin 13		V _{Ref}	2.3	2.4	2.5	V
Output current	Pin 13		I _{Ref}			5	mA
Source resistance	Pin 13		R _{Ref}		2.3	5	Ω
External capacitor	Pin 13		C _{Ref}	10			μF
Power-supply rejection ratio	f = 50 Hz	Pin 13	psrr		60		dB
IF amplifier							
Input resistance	Pin 9		R _{in}	180	330	520	Ω
Input capacitance	Pin 9		C _{in}		5		pF
Typical internal 3 dB frequency	IF level 70 dBμV Pins 9 and 14		f _{3dB}	8		12	MHz
−3 dB limiting point	Pin 9		V _{FM3dB}		30		dBμV
Recovered data voltage	Pin 14		V _{FMout}	50	130	230	mV
FM detector output resistance	Pin 14		R _{FMout}		50		kΩ
AM rejection ratio	m = 30%	Pins 9 and 14	AM _{rr}		25		dB
Maximum AM input voltage	Pin 9		V _{AMmax}		90		dBμV
AM quiescent current	Pin 8		I _{AMout}	10	22	37	μA
Maximum AM current	Pin 8		I _{AMoutmax}		100		μA
Operational amplifier							
Gain-bandwidth product	Pins 1, 2 and 16		f _t	3	4	6.5	MHz
Excess phase	Pins 1, 2 and 16		δ		80		degree
Open loop gain	Pins 1, 2 and 16		g ₀	50	70	95	dB
Output voltage range	Pin 2		ΔV _{out}		1.55		V
Common-mode input voltage	Pins 1 and 16		V _{in}	0.7		1.7	V
Input offset voltage	Pins 1 and 16		V _{os}	−2.5	0	+2.5	mV
Maximum output current	Pin 2		I _{out}			5	mA
Common-mode rejection ratio	Pin 1 and 16		cmrr	65	85		dB
Total harmonic distortion	V _{in} < 300 mV, f = 33 kHz, unity gain circuit Pin 2		thd		1	3	%
Power-supply rejection ratio	f = 50 Hz	Pin 2	psrr	65	85		dB

Parameters	Test Conditions / Pins	Symbol	Min.	Typ.	Max.	Unit
Clamping comparator						
Typical common-mode input voltage range	Pin 2	V_{cmvr}	0.8		1.6	V
Maximum distortion voltage	$V_{signal} = 100 \text{ mV}$, $R_+ = R_- = 50 \text{ k}\Omega$, $C_+ = C_- = 200 \text{ nF}$, $f_{disto} = 50 \text{ Hz}$, $f_{signal} = 1 \text{ kHz}$ Pin 2	V_{dmax}			200	mV
Output voltage	$V_2 > (V_6 + V_7) / 2$ (10-k Ω load to V_{Ref}) Pin 5	V_{cout}		V_{Ref}		V ¹⁾
Output voltage	$V_2 < (V_6 + V_7) / 2$ (10-k Ω load to V_{Ref}) Pin 5	V_{cout}	0	150	250	mV
Wake-up circuit						
Minimum wake-up level	Pin 9	V_{in}		40		dB μV^2)
Internal charging resistor	Pin 3	R_{int}		1.5		k Ω
Threshold voltage	Pin 3	V_{th}		1.6		V
Output switch current	Pin 10	I_{SW}	180	250	550	μA
Output switch voltage	Pin 10	V_{SW}			5.5	V ³⁾
External wake-up resistor	Pins 3 and 13	R_{WU}	22			k Ω
External wake-up capacitor	Pins 3 and 13	C_{WU}			10	μF
Hold time ($\pm 30\%$)		t_h	$\approx 1.5 \times R_{WU} \times C_{WU}$			s ⁴⁾
Delay time ($\pm 30\%$)		t_d	$\approx C_{WU} \times 0.75 \text{ k}\Omega$			s ⁴⁾

- 1) IC version with inverting comparator available: U4313B
- 2) Measured at Pin 9, referred to 330 Ω
- 3) Protected by a Z-diode, see figure 13
- 4) Valid for $0.1 \mu\text{F} \leq C_{WU} \leq 10 \mu\text{F}$ and $22 \text{ k}\Omega \leq R_{WU} \leq 680 \text{ k}\Omega$

Circuit Description

General Functions

The integrated circuit U4311B includes the following functions: IF amplifier, FM demodulator, wake-up circuit with monoflop, operational amplifier, non-inverting data comparator and voltage regulator.

The 10.7-MHz IF signal from the front end passes the integrated IF-amplifier which operates for amplitude- or frequency-modulated signals to either a logarithmic AM demodulator which was implemented to avoid settling-time problems effected by use of an automatic gain control system or a quadrature detector for FM. A data-shaping filter – advantageously realized with the internal high-performance operational amplifier – reduces system bandwidth to an optimized compromise regarding transmission distance and data recognition. Thus, an optimal bit-error rate can be achieved without any further active component.

The comparator connected to the output of the filter has a level-dependent hysteresis and clamps its reference voltage to the signal's minimum and maximum peaks as described later.

Without IF-input signal – in normal mode – only the IF amplifier and the AM demodulator which operates as a level-strength indicator are activated. If the level of the IF signal increases, the entire circuitry is turned on by the

wake-up circuit. This signal is externally available at Pin 10 and can be used to wake up a microcontroller. After an adjustable reset time, determined by the monoflop time constant, the integrated circuit returns to sleep mode. In this case, typically 1-mA supply current is required. An external resistor matched at Pin 3 to ground blocks the wake-up circuit and enables the complete functionality at lower IF levels as can be seen in figures 24 and 27, but supply current increases up to typically 2.8 mA.

Function of the Clamping Comparator

The output signal of the operational amplifier is fed to the input of the non-inverting comparator and two peak detectors (Q1 and Q2, figure 3). Their time constants are distinguished by RC+ and RC–. The component's value must be adapted to the transmission code. The time constant should be large compared to the bit rate for optimized noise and hum suppression. To compensate the input transistor's base-emitter-voltage differences, these two signals are buffered by Q3 and Q4. The mean value is used as comparator threshold, the difference of the peak values controls the hysteresis. This clamping comparator operates as a data regenerator.

Another version of the IC, with an inverting clamping comparator, is also available (U4313B). Therefore the operational amplifier can be used either as a non-inverting or an inverting filter without the need of any additional components.

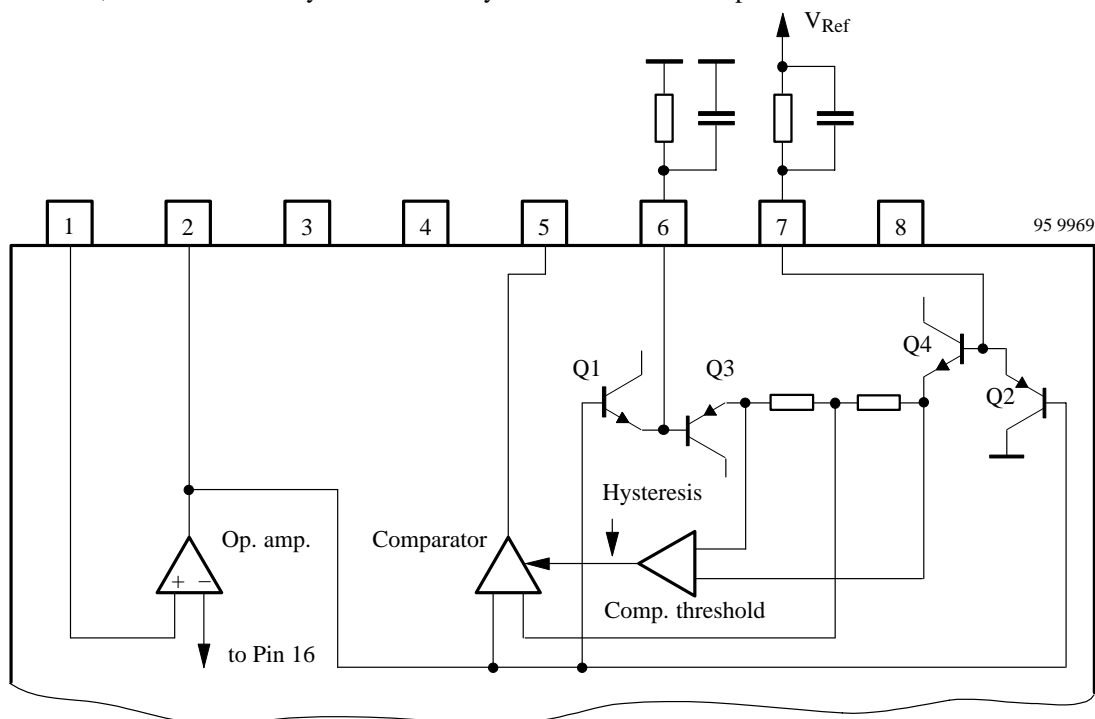


Figure 3. Principle function of the clamping comparator

95 9970

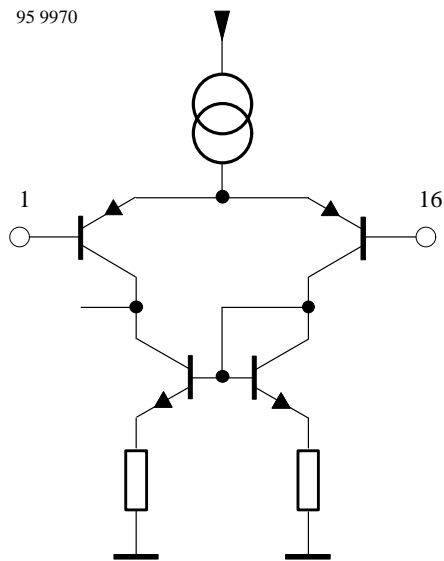


Figure 4. Pin 1 OP_{in+}

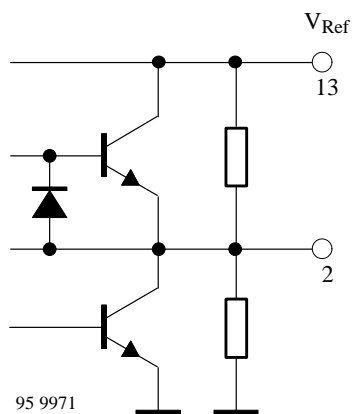


Figure 5. Pin 2 OP_{out}

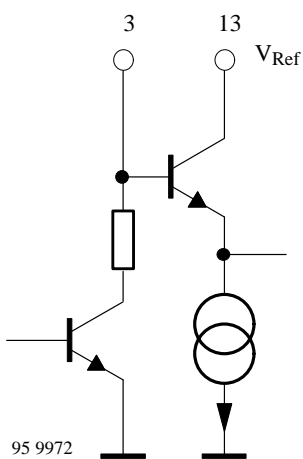
Figure 6. Pin 3 RC_{wake}

Figure 7. Pin 4 GND2

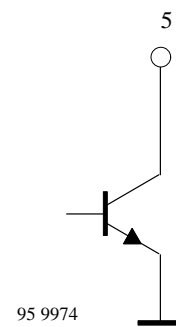


Figure 8. Pin 5 Comp_{out}

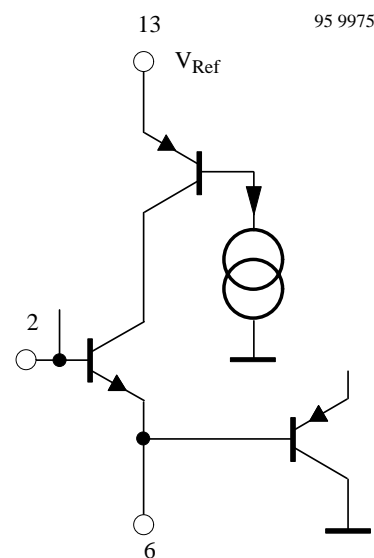


Figure 9. Pin 6 RC–



Figure 10. Pin 7 RC+



Figure 13. Pin 10 SW_{out}



Figure 11. Pin 8 AM_{out}



Figure 14. Pin 11 GND1

Figure 12. Pin 9 IF_{in}

Figure 15. Pin 12 Discr

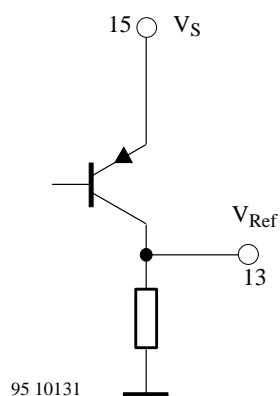


Figure 16. Pin 13 V_{Ref}

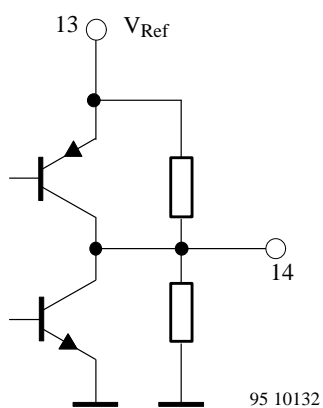


Figure 17. Pin 14 FM_{out}

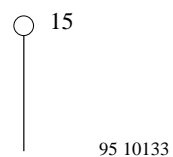


Figure 18. Pin 15 V_S

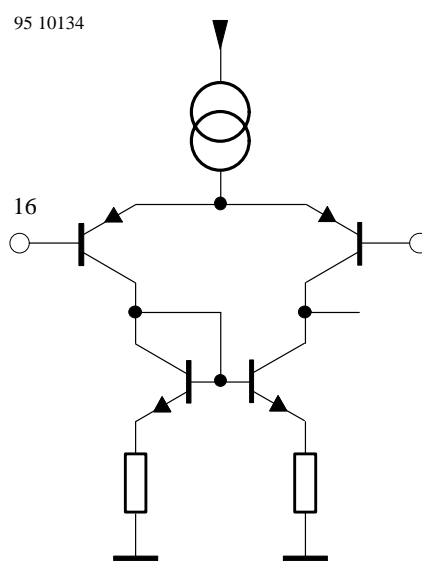


Figure 19. Pin 16 OP_{in-}

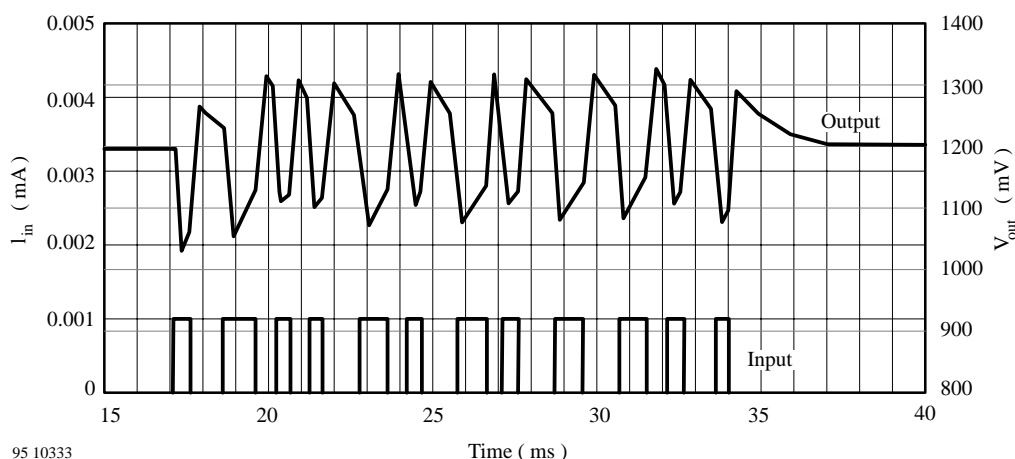


Figure 20. Time domain response of 2-kHz Bessel lowpass data filter

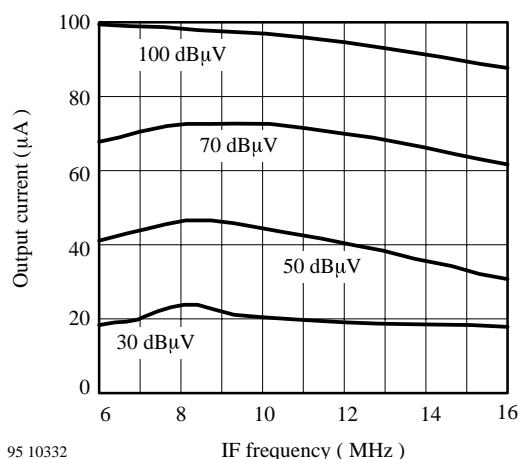


Figure 21. IF-frequency response

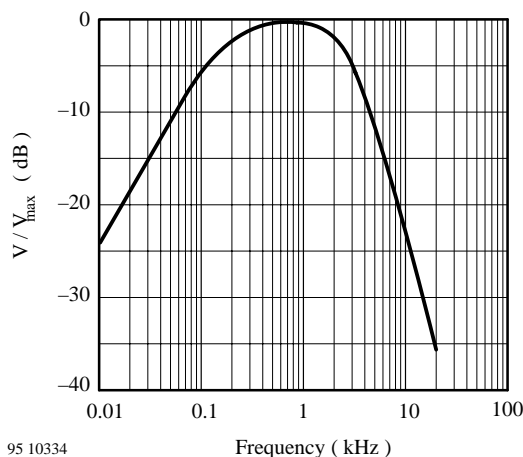


Figure 22. Frequency response of 2-kHz Bessel lowpass data filter

Data-Recovering Filter

The test circuit in figures 23 and 26 includes an example of a data-recovering filter realized with the components R_1 , R_2 , C_1 , C_2 , C_3 . It is of a second-order Bessel type with lowpass characteristic, a 3-dB cut-off frequency of 2 kHz and an additional highpass characteristic for suppressing dc and low-frequency ac components. Simulation of time domain and frequency response can be seen in figures 20 and 22. This filter gives a typical application of a 1-kBaud Manchester-code, amplitude-modulated transmission.

The capacitor C_2 is responsible for the highpass cut-off frequency. In order to achieve a correct pulse response, this highpass cut-off frequency should be as low as possible. Figure 20 shows the transient response and the influence of the dc component. The first pulses might be wrong if the highpass cut-off frequency is too low. For this reason, some burst bits must be transmitted before the real data transmission starts. On the other hand, if the cut-off frequency is too high, roof shaping of the rectangle pulses at the operational amplifier output might causes problems.

The lowpass cut-off frequency and the maximum transimpedance V_{out}/I_{in} are distinguished by the further external elements. Careful design of the data filter enables optimized transmission range. For designing other filter parameters, please refer to filter design handbooks/ programs or request TEMIC for support. Some proposals can be found in the application notes ANT012, ANT013 and ANT015.

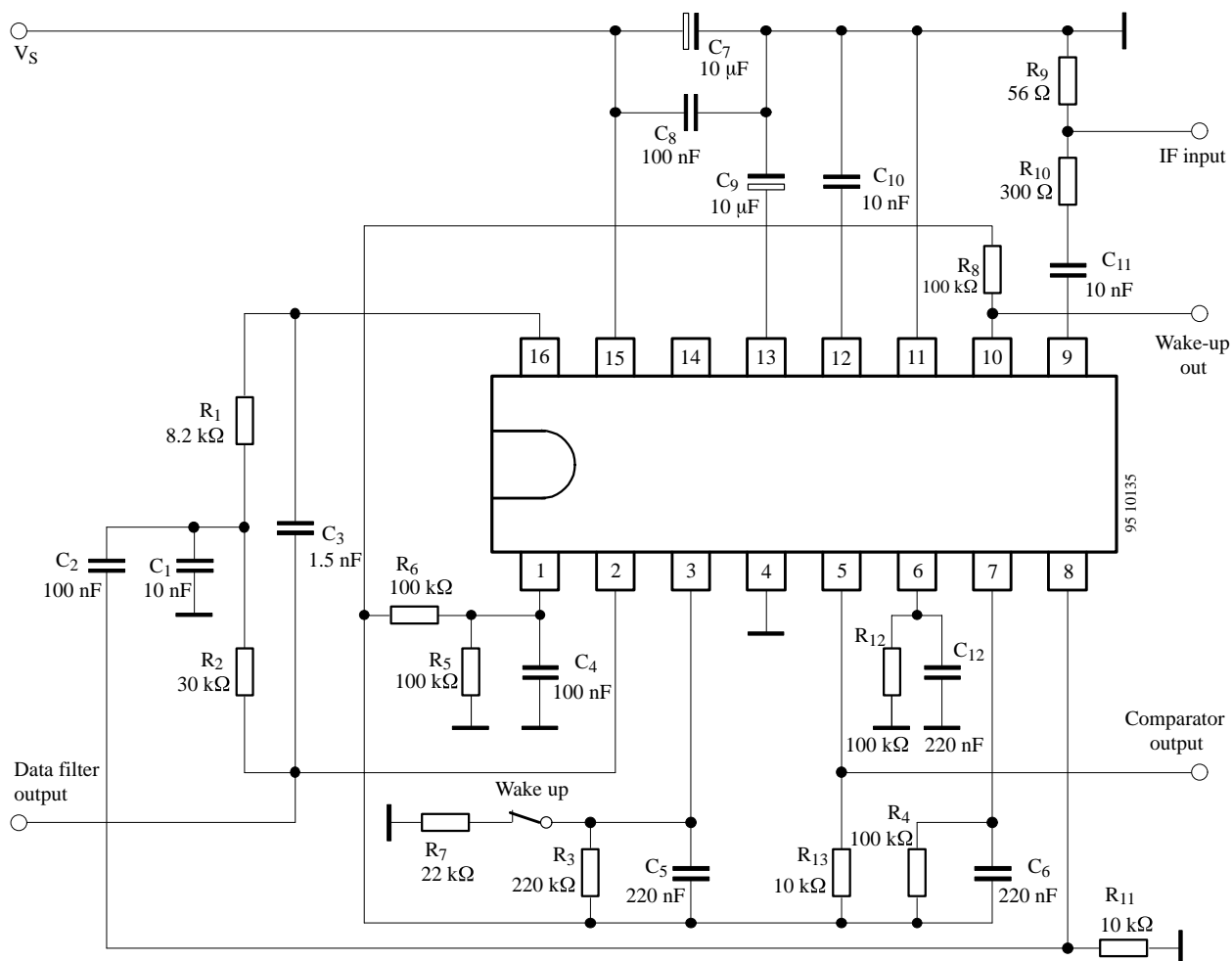


Figure 23. AM test circuit with 2-kHz Bessel lowpass data filter

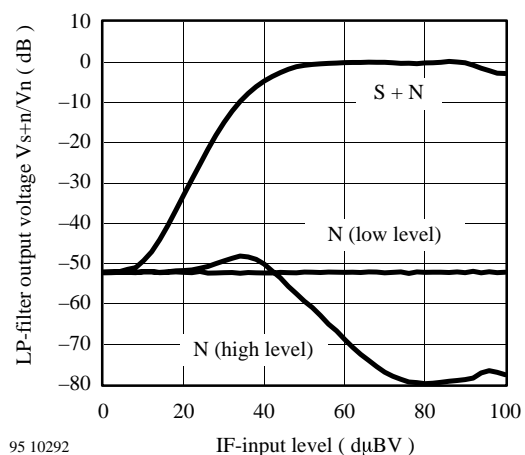


Figure 24. Signal-to-noise ratio AM

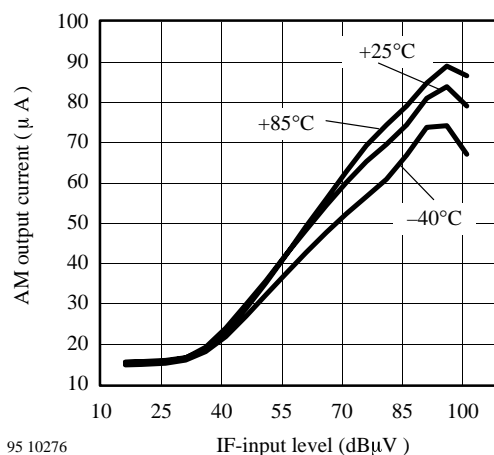


Figure 25. AM-demodulator characteristic vs. temperature

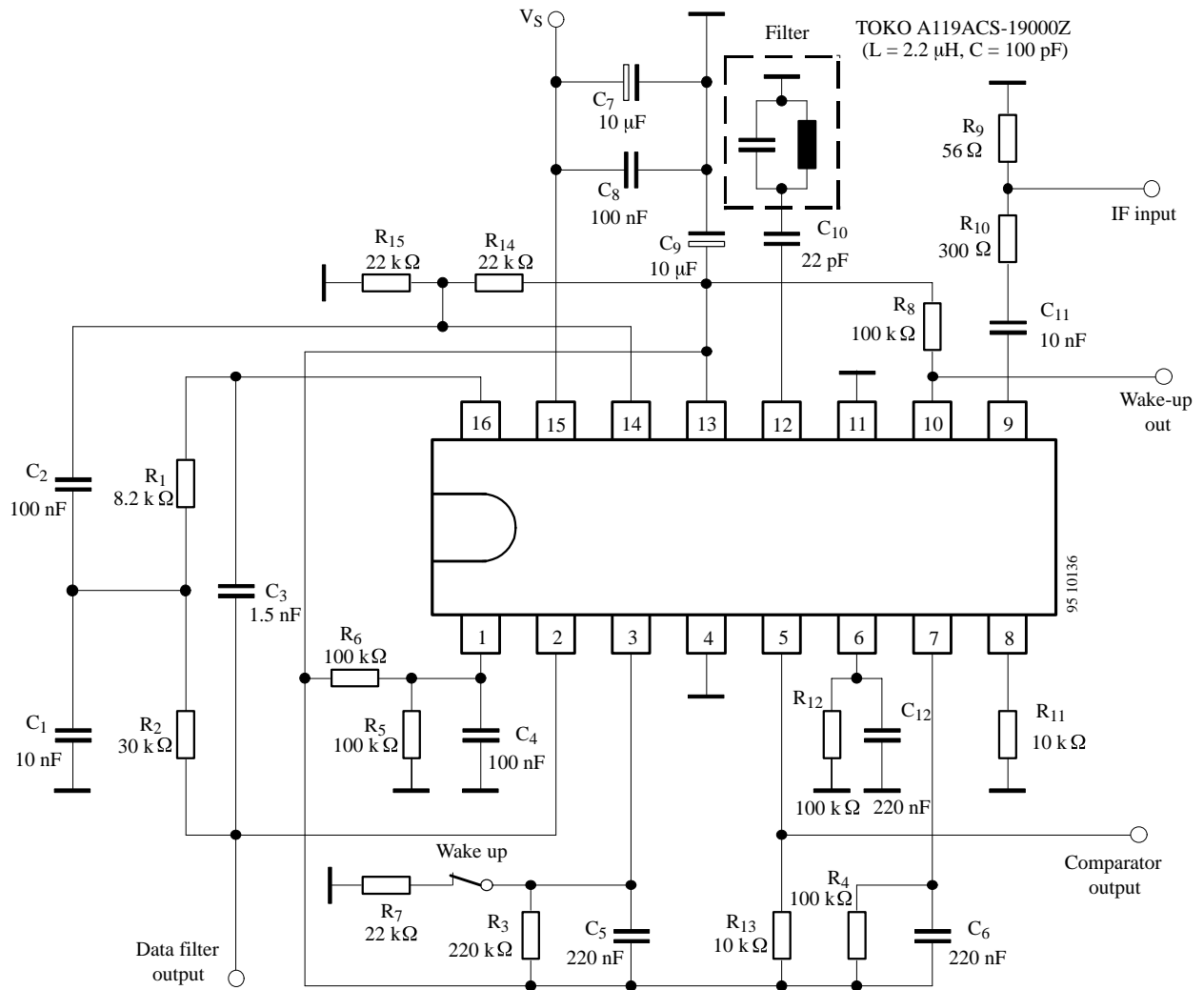


Figure 26. FM test circuit with 2-kHz Bessel lowpass data filter

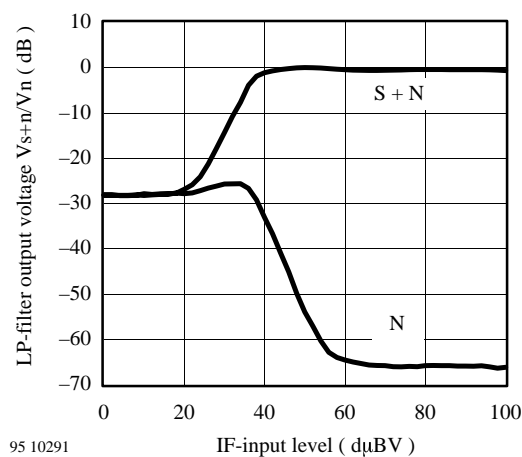


Figure 27. Signal-to-noise ratio FM; deviation 22.5 kHz

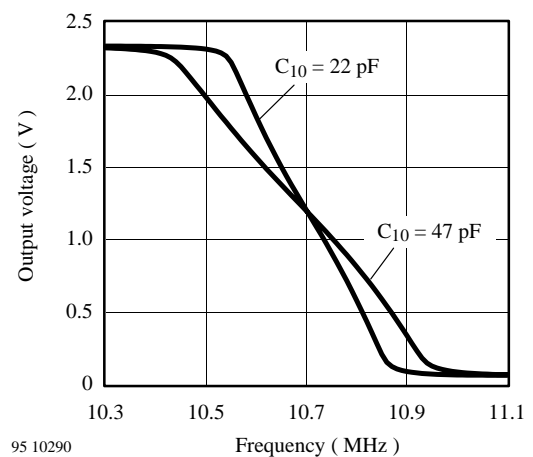


Figure 28. FM-discriminator characteristic

Application

The U4311B is well-suited to implement UHF remote control or data transmission systems, based on a low-current superheterodyne receiver concept. SAW-devices may be used in the transmitter's as well as in the receiver local oscillator. The front end should be a discrete circuit application with low-current UHF transistors such as S822T or S852T. The frequency of the local oscillator can be determined either by coaxial resonators or SAW devices. Due to large SAW-resonator tolerance, an IF bandwidth – and in a FM system

additionally the discriminator amplitude characteristic (figure 28) – of 300 kHz or higher is proposed. As the circuit needs only 3.0 V supply voltage for operation, the front end may be a stacked design in order to achieve a total receiver current consumption of approximately 1 mA. Figure 29 shows a principle receiver concept diagram. The application notes ANT012, ANT013, and ANT015 contain more detailed information on complete RF links.

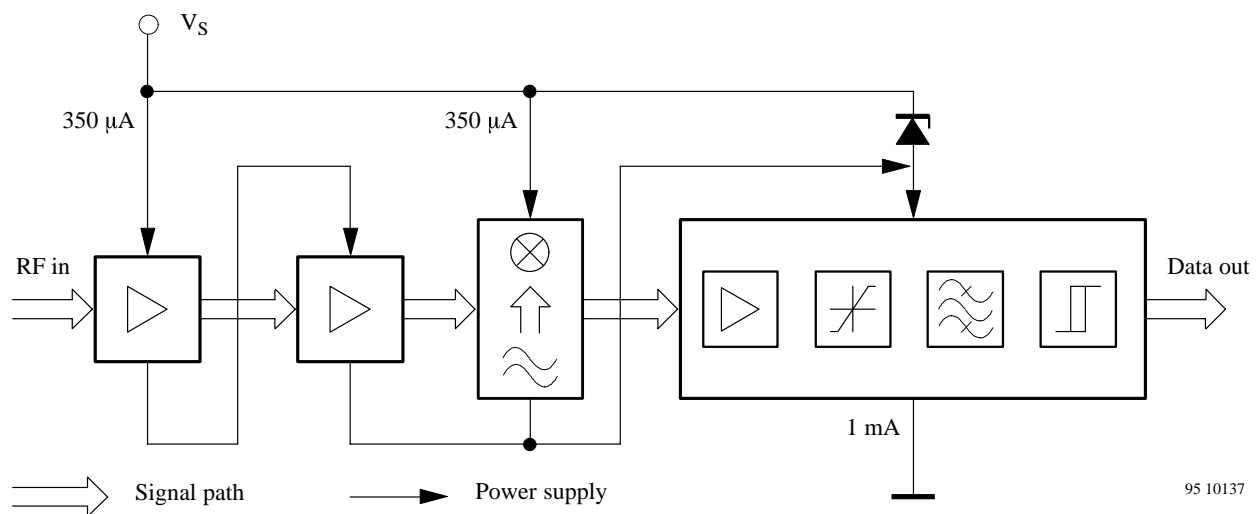
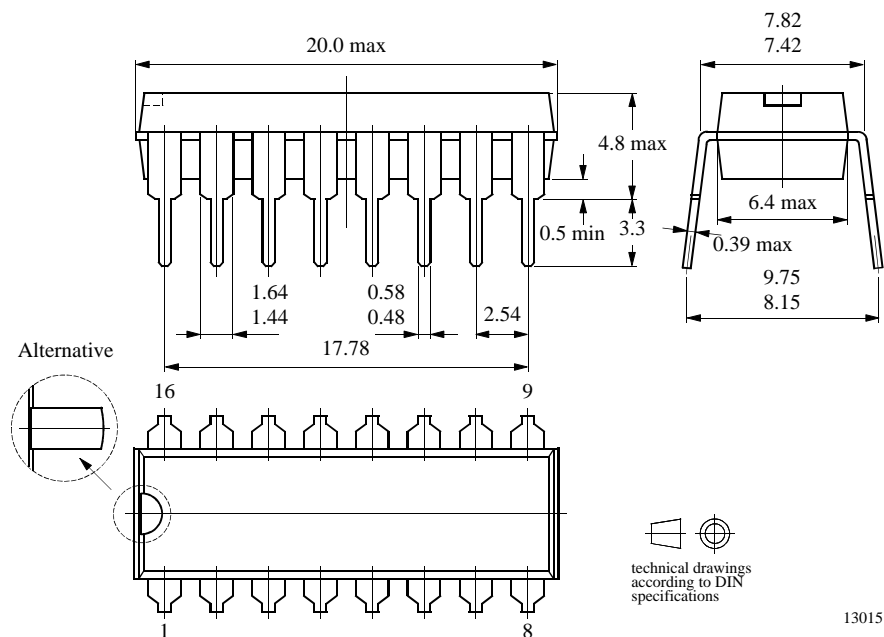


Figure 29. Principle diagram of a UHF remote control receiver

Package Information

Package DIP16

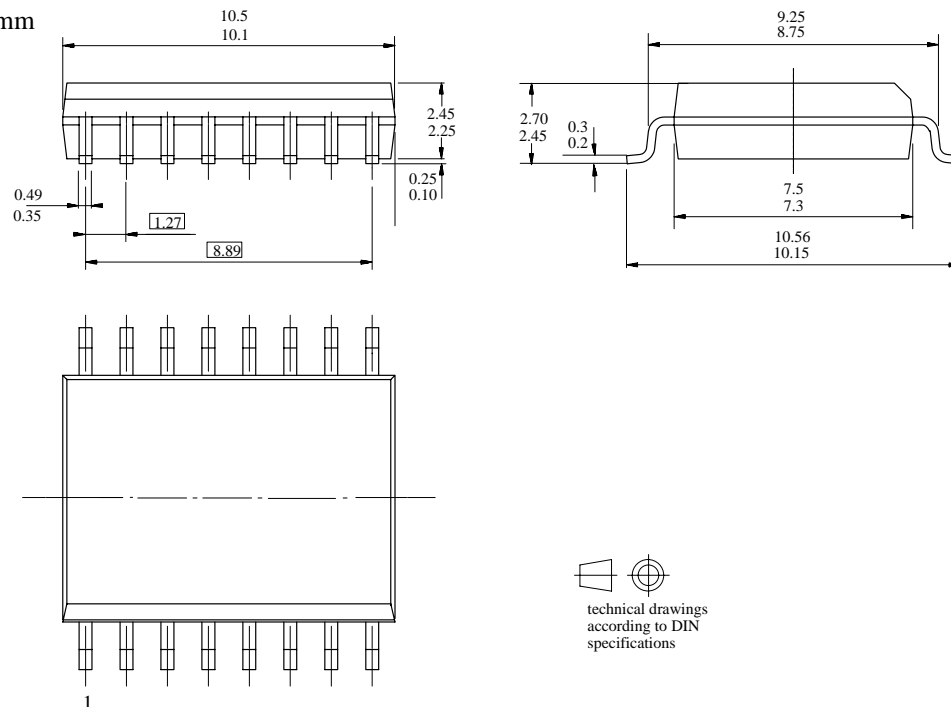
Dimensions in mm



13015

Package SO16L

Dimensions in mm



95 11493

Ozone Depleting Substances Policy Statement

It is the policy of **TEMIC Semiconductor GmbH** to

1. Meet all present and future national and international statutory requirements.
2. Regularly and continuously improve the performance of our products, processes, distribution and operating systems with respect to their impact on the health and safety of our employees and the public, as well as their impact on the environment.

It is particular concern to control or eliminate releases of those substances into the atmosphere which are known as ozone depleting substances (ODSs).

The Montreal Protocol (1987) and its London Amendments (1990) intend to severely restrict the use of ODSs and forbid their use within the next ten years. Various national and international initiatives are pressing for an earlier ban on these substances.

TEMIC Semiconductor GmbH has been able to use its policy of continuous improvements to eliminate the use of ODSs listed in the following documents.

1. Annex A, B and list of transitional substances of the Montreal Protocol and the London Amendments respectively
2. Class I and II ozone depleting substances in the Clean Air Act Amendments of 1990 by the Environmental Protection Agency (EPA) in the USA
3. Council Decision 88/540/EEC and 91/690/EEC Annex A, B and C (transitional substances) respectively.

TEMIC Semiconductor GmbH can certify that our semiconductors are not manufactured with ozone depleting substances and do not contain such substances.

We reserve the right to make changes to improve technical design and may do so without further notice.

Parameters can vary in different applications. All operating parameters must be validated for each customer application by the customer. Should the buyer use TEMIC products for any unintended or unauthorized application, the buyer shall indemnify TEMIC against all claims, costs, damages, and expenses, arising out of, directly or indirectly, any claim of personal damage, injury or death associated with such unintended or unauthorized use.

TEMIC Semiconductor GmbH, P.O.B. 3535, D-74025 Heilbronn, Germany
Telephone: 49 (0)7131 67 2594, Fax number: 49 (0)7131 67 2423