

THA-409
THA-409M

Flush Lever Handle Compression Type



Characteristic of THA-409/THA-409M

A lift mechanism that cam draws in when handle is stored.
There is no play when the door is closed while enhancing the EMI effect.
Superior space-saving design.

Characteristic of THA-409M

Master key system is available as custom made.
Possible to work efficiency by combining TL-326 and TL-347 using same key(custom made).

Application

EMI shielding racks for information devices such as digital equipments or magnetic disc devices / Control boards / Railcars / Vehicles / Aircrafts, etc.
(If using for EMI shielding rack application, it is important to install an EMI countermeasure device on the rack.)

Specification

The rotational angle of the key is 90°.
The key can be inserted or removed from the locked or unlocked positions.
The locking cam is not supplied.
THA-409-2K can be used for right and left by changing the cap.

Note

Please apply anti-loosening treatment to the pan head screw with washer after installing Cam. Allowable load against compression direction is horizontally to 43mm position center of turning handle and less than 49N(5kgf).

| Model No. | Formation | Key Number | Net Weight(g) | Code No. |
|--------------|---------------------|-------------------|---------------|----------|
| THA-409-1KR | Right Turn | | 382 | 3563 |
| THA-409-1KL | Left Turn | No.2200 | 382 | 3564 |
| THA-409-2K | Left and Right Turn | | 328 | 3791 |
| THA-409M-2KR | Right Turn | ※Stated elsewhere | 340 | 13118 |
| THA-409M-2KL | Left Turn | | 340 | 13119 |
| THA-409-3KR | Right Turn | No.2200 | 265 | 3566 |
| THA-409-3KL | Left Turn | | 265 | 3567 |

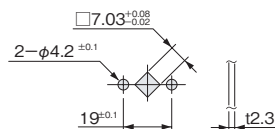
※Key number is randomly assigned between 001~150 and cannot be specified.

Parts List

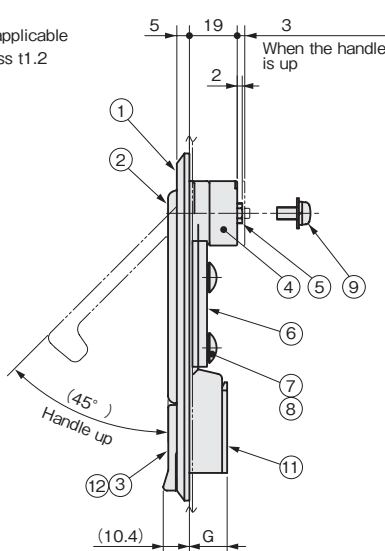
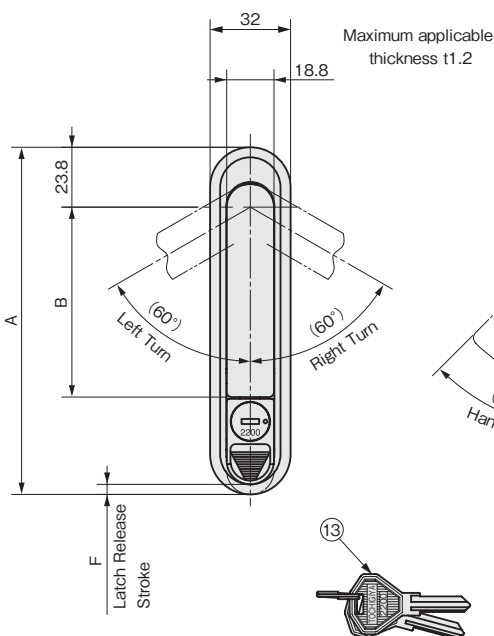
| No. | Part Name | Material | Finish | Quantity |
|-----|------------------------------|----------|---------------------|----------|
| 1 | Case | ZDC | Cr (Dull Finish) | 1 |
| 2 | Handle | | | 1 |
| 3 | Latch | | | 1 |
| 4 | Cap | SUS303 | Ni | 1 |
| 5 | Shaft | | | 1 |
| 6 | Set plate | | | 1 |
| 7 | Truss screw | SPCC | Ni | 2 |
| 8 | Plate spring | | | 2 |
| 9 | Pan head screw with washer | | | 1 |
| 10 | Cross hole countersunk screw | S | Ni | 2 |
| 11 | Latch cover | | | 1 |
| 12 | Lock | | | 1 |
| 13 | Key | C3713 | Ni | 2 |

Size List

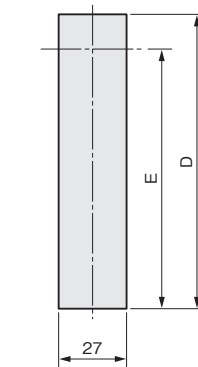
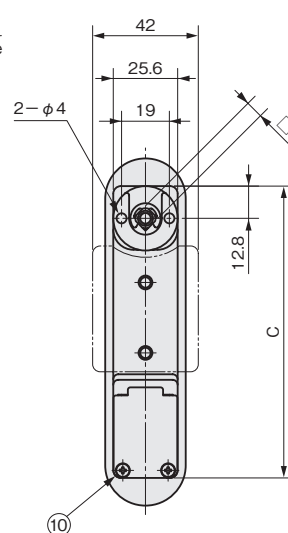
| Model No. | A | B | C | D | E | F | G |
|----------------|-----|-------|-----|-----|-------|-----|--------|
| THA-409-1KR·L | 168 | 105.5 | 146 | 147 | 134.2 | (4) | 15 |
| THA-409-2K | 138 | 75.5 | 116 | 117 | 103.2 | | |
| THA-409M-2KR·L | | | | | | (3) | (18.5) |
| THA-409-3KR·L | 118 | 55.5 | 96 | 97 | 83.2 | (4) | 15 |



Layout of hole for installation and plate thickness



The drawing shows THA-409.
THA-409M is slightly different.



Layout of hole for installation