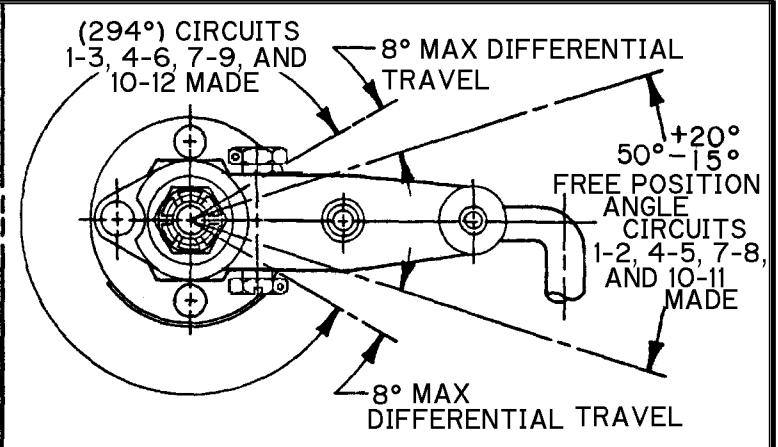
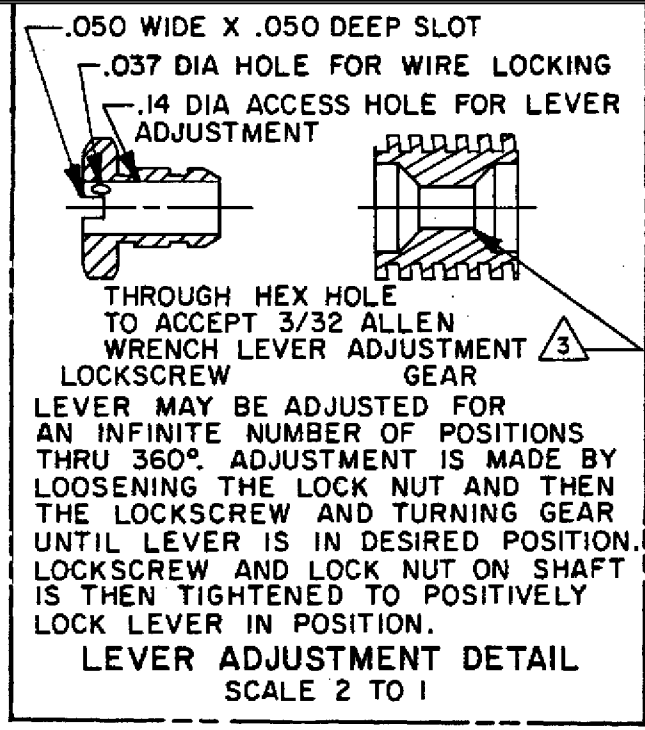
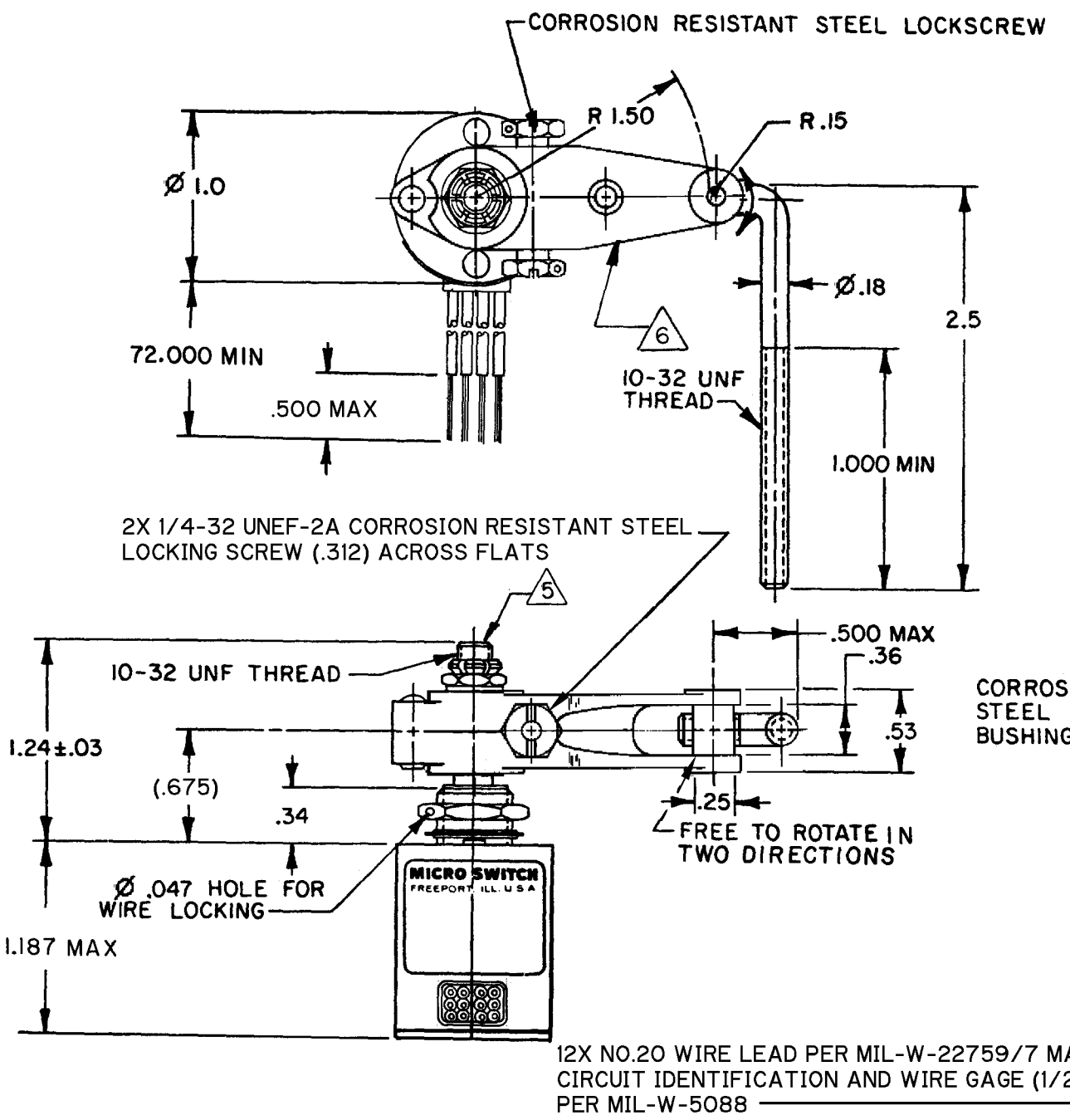


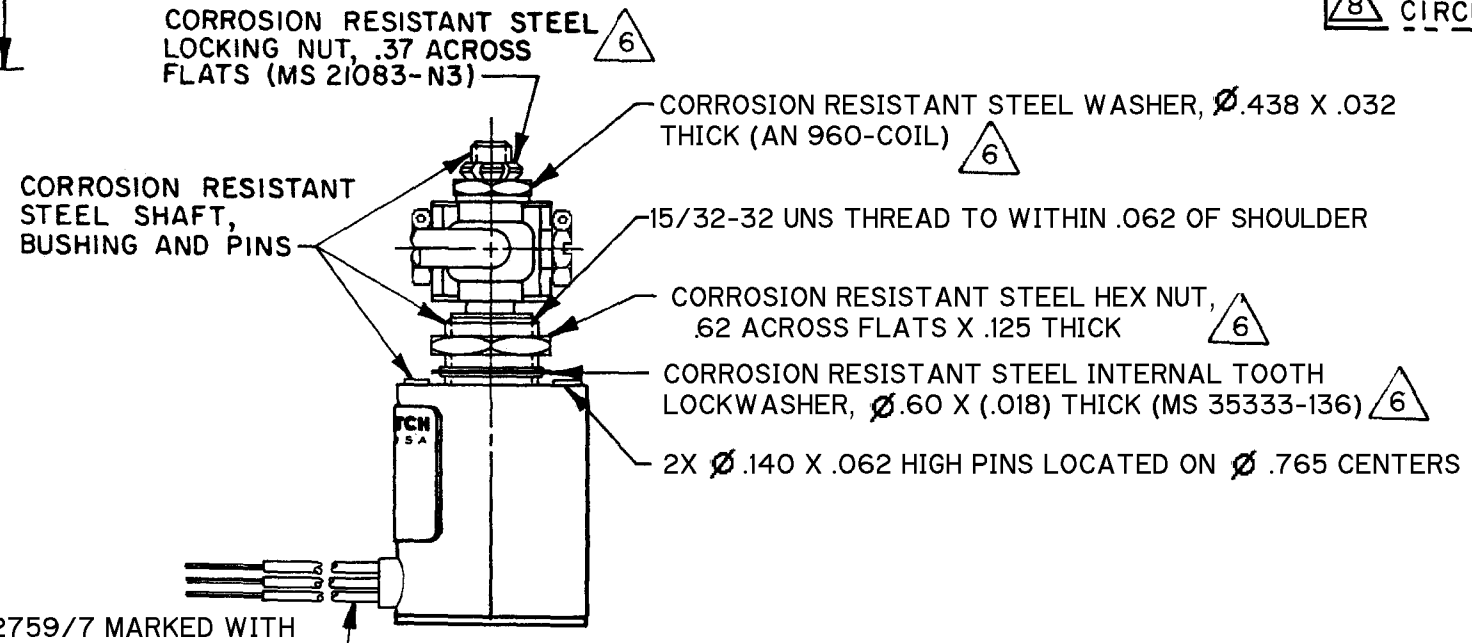
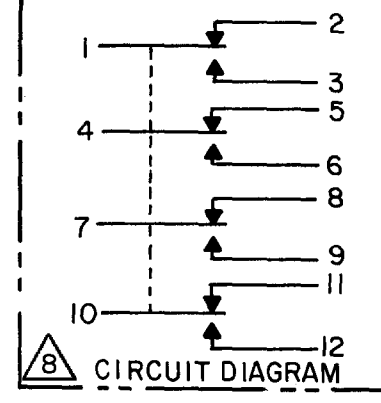
MICRO SWITCH
a Honeywell Division
FED. MFG. CODE 91929

SWITCH - ENCLOSED

CATALOG LISTING
39EN6-6



TRAVEL CHARACTERISTICS



ANSI Y114.5M-1982 APPLIES

THIS DRAWING COVERS A PROPRIETARY ITEM AND IS THE PROPERTY OF MICRO SWITCH, A DIVISION OF HONEYWELL. THIS DRAWING IS NOT TO BE COPIED OR USED WITHOUT THE APPROVAL OF MICRO SWITCH		THIRD ANGLE PROJECTION	
CHARACTERISTICS		ELECTRICAL DATA	
OPERATING FORCE----- 3 IN LB MAX		CONTACT ARRANGEMENT 4X S P D T	
PRETRAVEL DIFFERENTIAL TRAVEL OVERTRAVEL FREE POSITION	LOAD	28 VDC	
	RES	SEA LEVEL	50,000 FT
	IND	7	7
	MOTOR	4	2.5
		4	
SEE DETAIL		UNLESS OTHERWISE SPECIFIED TOLERANCES ARE	
		ONE PLACE (.0)	$\pm .030$
		TWO PLACE (.00)	$\pm .015$
		THREE PLACE (.000)	$\pm .005$
		ANGLES	\pm
		WEIGHT	12.0 OZ MAX

- NOTES
- 1 - CORROSION RESISTANT STEEL ENCLOSURE
 - 2 - SWITCH SEALED PER MIL-PRF-8805, SYMBOL 4
 - 3 - CIRCUIT DIAGRAM AND CATALOG LISTING ARE SHOWN ON NAMEPLATE
 - 4 - UNIT PROVIDES NO SHAFT RESTORING TORQUE, THE ACTUATING DEVICE MUST CONTROL MOVEMENT OF THE SHAFT
 - 5 - DO NOT APPLY MORE THAN 20-25 INCH-POUNDS OF TORQUE WHEN TIGHTENING LOCKING NUT
 - 6 - HARDWARE MAY BE PACKAGED UNASSEMBLED PER MIL-PRF-8805
 - 7 - SILVER PROJECTION, GOLD PLATED CONTACTS
 - 8 - CIRCUITS ILLUSTRATED IN FREE POSITION ANGLE

Mouser Electronics

Authorized Distributor

Click to View Pricing, Inventory, Delivery & Lifecycle Information:

[Honeywell:](#)

[39EN6-6](#)