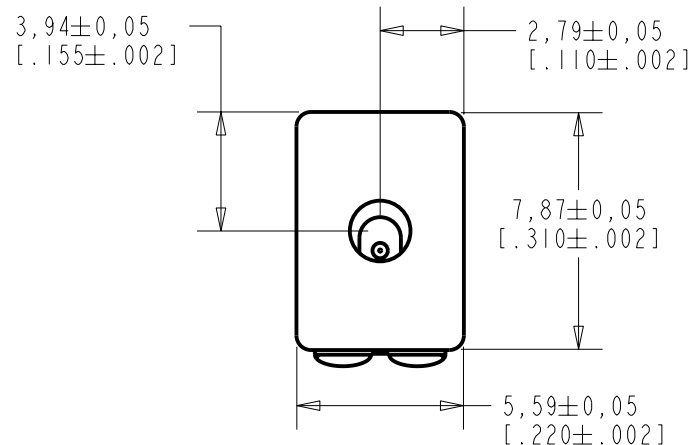


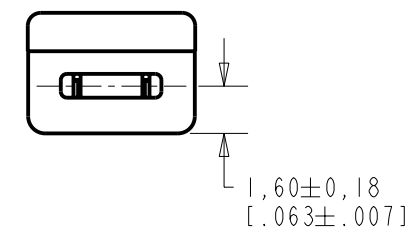
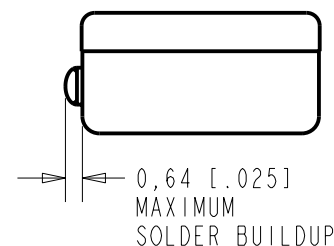
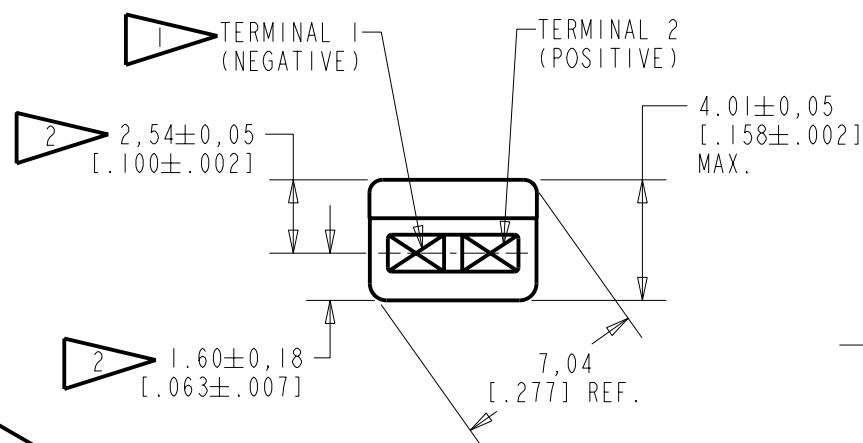
BJ-28471-000

SHT 1.1



## NOTES:

- 1 A DECREASE IN PRESSURE AT THE SOUND INLET WILL CAUSE A POSITIVE VOLTAGE AT TERMINAL 2 RELATIVE TO TERMINAL 1.
- 2 LOCATED FROM TWO SURFACES FOR CUSTOMER CONVENIENCE. ONLY APPLICABLE FROM ONE SURFACE, NOT TO BE USED TOGETHER.



SCALE 2:1

NOMINAL WEIGHT  
.66 GRAM

DIMENSIONS IN MILLIMETERS [INCHES]

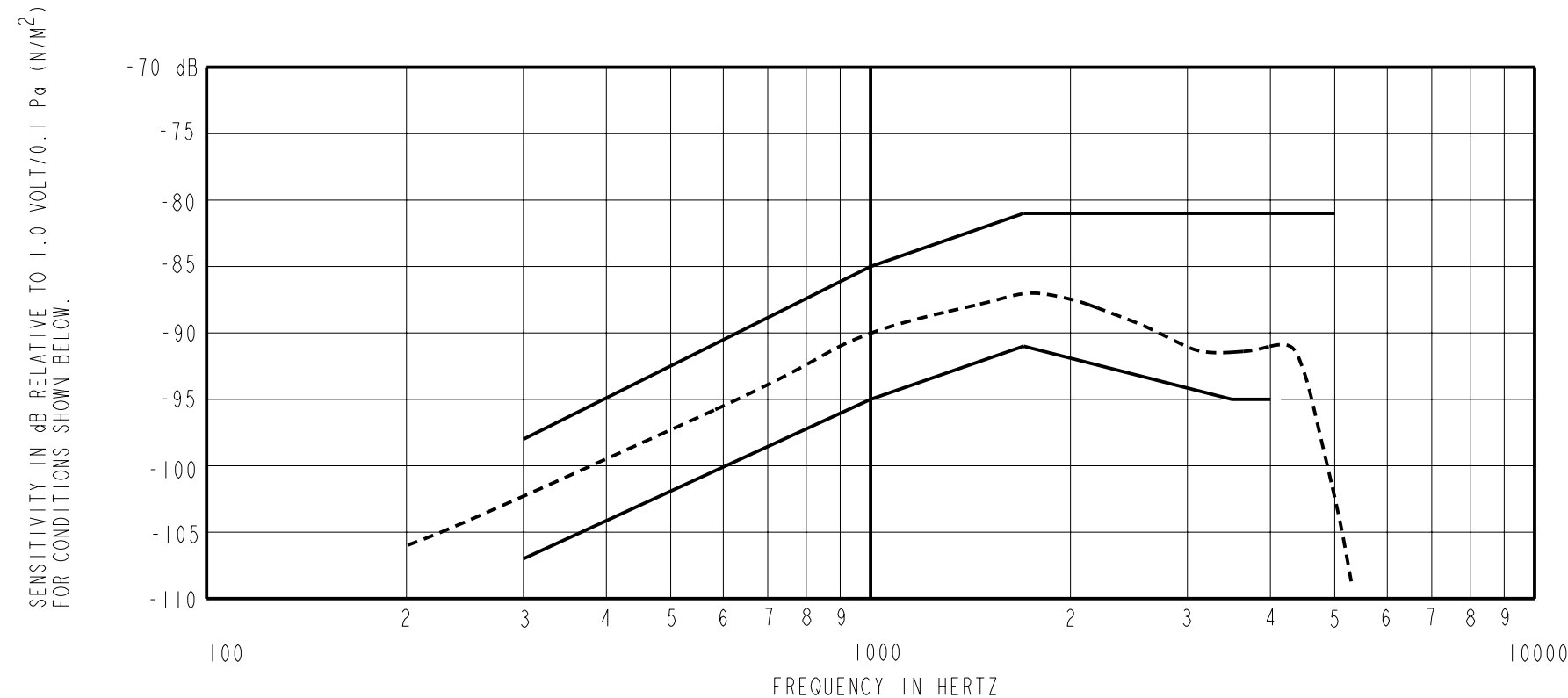
**KNOWLES ELECTRONICS**  
ITASCA, ILLINOIS U.S.A.

Revision	C.O. #	Implementation Date	RELEASE LEVEL	REVISION
			Released	A
A	C10103470	12-9-05		
SCALE: 4:1			DR. BY DATE	
DO NOT SCALE DRAWING			CRG 12-9-05	
			CK. BY DATE	
TITLE: MICROPHONE			GJP 1-5-06	
OUTLINE DRAWING			APP. BY DATE	
BJ-28471-000			GJP 1-5-06	
SHT 1.1				

WHEN TEST LIMITS ARE USED TO ESTABLISH INCOMING INSPECTION ACCEPTANCE/REJECTION CRITERIA, CORRELATION OF TEST EQUIPMETN WITH KNOWLES IS ALSO REQUIRED FOR ELIMINATION OF EQUIPMENT AND TEST METHOD VARIATIONS.

NO DAMPING

BJ-28471-000  
SHEET 2.1



NOTES:

SENSITIVITY

FREQUENCY

MIN.

NOM.

MAX.

DEVICE CONFORMITY

RANGE OF DEVIATION FROM 1KHz

1. LOAD RESISTANCE FOR SENSITIVITY MEASUREMENT: 150 OHMS
2. OUTPUT IMPEDANCE AT 1kHz: 150 OHMS NOMINAL
3. NOMINAL DC RESISTANCE AT 20°C: 34.5 OHMS
4. TESTED WITH REAR PORT OPEN TO LARGE SOUND FREE VOLUME
5.

<u>FREQUENCY</u>	<u>MIN.</u>	<u>MAX.</u>
300	-107.0	-97.0
1000	-95.0	-85.0
1700	-91.0	-81.0
3500	-95.0	---
4000	-95.0	---
5000	---	-81.0

6. FOR EQUAL SPL APPLIED TO FRONT AND REAR PORTS IN PHASE AT 1000 Hz THE SENSITIVTY WILL REDUCE BY AT LEAST 10 dB.
7. FRONT PORT LOCATION: 0N  
REAR PORT LOCATION: 12N

Revision	C.O. #	Implementation Date	RELEASE LEVEL	REVISION
			Released	A
A	C10103470	12-9-05		
WHEN TEST LIMITS ARE USED TO ESTABLISH INCOMING INSPECTION ACCEPTANCE/REJECTION CRITERIA, CORRELATION OF TEST EQUIPMENT WITH KNOWLES IS ALSO REQUIRED FOR ELIMINATION OF EQUIPMENT AND TEST METHOD VARIATION			DR. BY	DATE
			CRG	12-9-05
TITLE: MICROPHONE			CK. BY	DATE
			GJP	1-5-06
PERFORMANCE SPECIFICATION			APP. BY	DATE
			GJP	1-5-06
BJ-28471-000			SHT 2.1	

KNOWLES ELECTRONICS  
ITASCA, ILLINOIS U.S.A.

# Mouser Electronics

Authorized Distributor

Click to View Pricing, Inventory, Delivery & Lifecycle Information:

Knowles:

[BJ-28471-000](#)