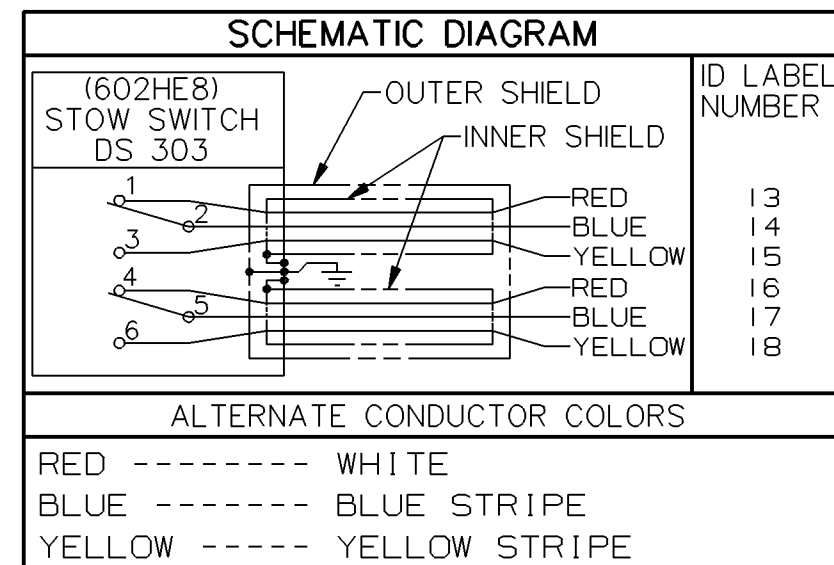



NOTES

- 1 - CORROSION RESISTANT STEEL ENCLOSURE
- 2 - SWITCH SEALED PER MIL-S-8805, SYMBOL 5
- 3 - COINCIDENCE OF OPERATING AND RELEASING POINTS TO BE WITHIN .010 OF PLUNGER TRAVEL
- 4 - REPLACEMENT MOUNTING HARDWARE-PACKET: 19PA9
- 5 - FOR OPERATION IN TEMPERATURES OF -65°F TO +257°F
- 6 - HARDWARE MAY BE PACKAGED SEPARATELY PER MIL-S-8805 AND ATTACHED TO WIRE HARNESS
- 7 - THREE CONDUCTOR SHIELDED CABLE SHALL BE PER RMS 329-3SJ-20
- 8 - OVERBRAIDED SHIELD TO BE Ø .0060 NICKEL PLATED COPPER WIRE PER QQ-W-343, ASTM-B-355 AND ROHR SPECIFICATION RPS 21.45
- 9 - NOMEX OVERBRAID SHALL BE A 2/2 WEAVE/BRAID OF 10% F.E.P. COATED 1200 DENIER, 600 FILAMENT YARN
- 10 - INITIATION AND TERMINATION PATTERN MAY BE REVERSED AT BRAIDING VENDOR'S OPTION, NOMEX BRAID ONLY
- 11 - NAMEPLATE FOR FULL CABLE ASSEMBLY TO INCLUDE "SWITCH AND HARNESS ASSEMBLY--STOW --602HE8-11 (REF) 266D0329-509--SERIAL NO. XXXX--DATE CODE X-XX AND MICRO SWITCH--91929."
- 12 - MAXIMUM ELECTRICAL LOAD, 1 AMP RESISTIVE AT 32 VDC
- 13 - SWITCHES ARE TO BE TESTED PER QC 624 015
- 14 - SWITCH IDENTIFICATION SHOWN ON SWITCH SHALL INCLUDE THE FOLLOWING: "XXXHEX (REF) MICRO SWITCH PART NUMBER) - STOW SWITCH--DS-XXX (CUSTOMER'S I.D. NUMBER)--CIRCUIT DIAGRAM --MICRO SWITCH--91929."
- 15 - INDIVIDUAL CONDUCTORS TO BE STRIPPED AND TINNED .250 MIN AT FREE END OF CABLE
- 16 - CUSTOMER WIRE TERMINATIONS TO BE PROTECTED FROM DAMAGE BY HEAT SHRINKABLE TUBING EXTENDING FROM 1.000 MIN OVERLAP OF THE NOMEX BRAID TO .500 MIN BEYOND WIRE ENDS. TO BE REMOVED BY CUSTOMER.
- 17 - MAXIMUM ALLOWABLE DIAMETER OF FINISHED CABLE ASSEMBLY TO BE .550
- 18 - CABLE COILED AND SECURED IN 2 PLACES WITH WIRE TIES, Ø 10 IN. MAX



CHARACTERISTICS		ELECTRICAL DATA	
OPERATING FORCE ----- 5 - 12 LB		CONTACT ARRANGEMENT S P D T (2)	
FULL OVERTRAVEL FORCE ----- 30 LB MAX		LOAD	28 VDC
RELEASE FORCE ----- 3 LB MIN			SEA LEVEL & 50.000 FT
PRETRAVEL ----- .040 MAX		RES	1
DIFFERENTIAL TRAVEL ----- .020 MAX		IND	.5 
OVERTRAVEL ----- .125 MIN		MOTOR	

THIRD ANGLE PROJECTION	
SCALE	FULL
DO NOT SCALE PRINT	
UNLESS OTHERWISE SPECIFIED TOLERANCES ARE	
ONE PLACE	(.0) ±.030
TWO PLACES	(.00) ±.015
THREE PLACES	(.000) ±.005
ANGLES	±
WEIGHT 1.7 LBS MAX	

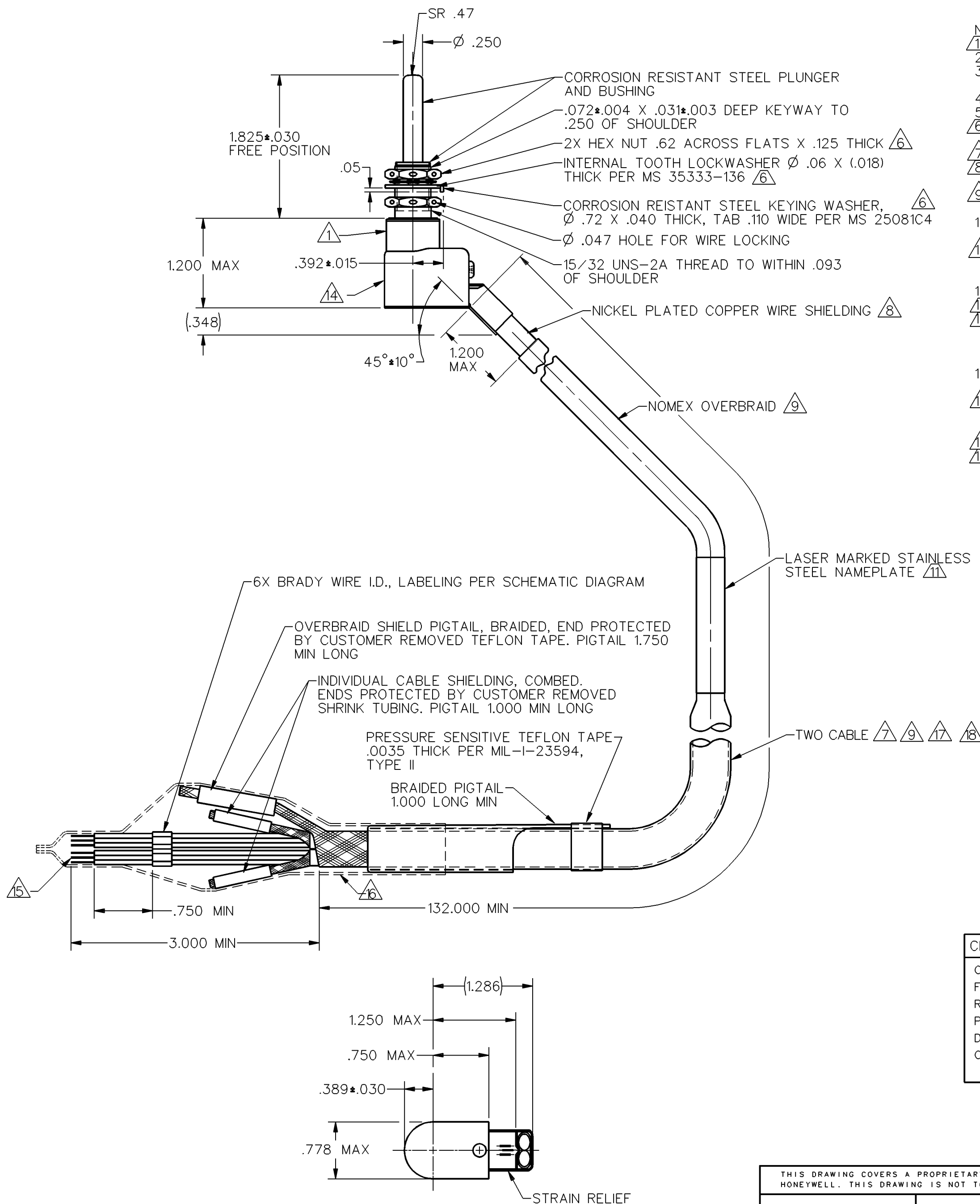
THIS DRAWING COVERS A PROPRIETARY ITEM AND IS THE PROPERTY OF MICRO SWITCH, A DIVISION OF HONEYWELL. THIS DRAWING IS NOT TO BE COPIED OR USED WITHOUT THE APPROVAL OF MICRO SWITCH.

MICRO SWITCH
a Honeywell Division

FED. MFG. CODE 91929

SWITCH - CABLE ASSEMBLY

CATALOG LISTING
602HE8-11



M 602HE8-11

8

REVISIONS
A PR-18231
M A M
11 AUG 90
B CO-
68649
S A V
27 DEC 90
C CO-
69818
M A M
15 FEB 91
D CO-
70079
T S M
8 APR 91

DDM/CAD
DRAWN
MAM 24AUG90
CHECK
NWJ 27AUG90
CHECK
GRT 27AUG90
CHECK

RELEASE NO. PR-18231 REPLACES

Mouser Electronics

Authorized Distributor

Click to View Pricing, Inventory, Delivery & Lifecycle Information:

[Honeywell:](#)

[602HE8-11](#)