

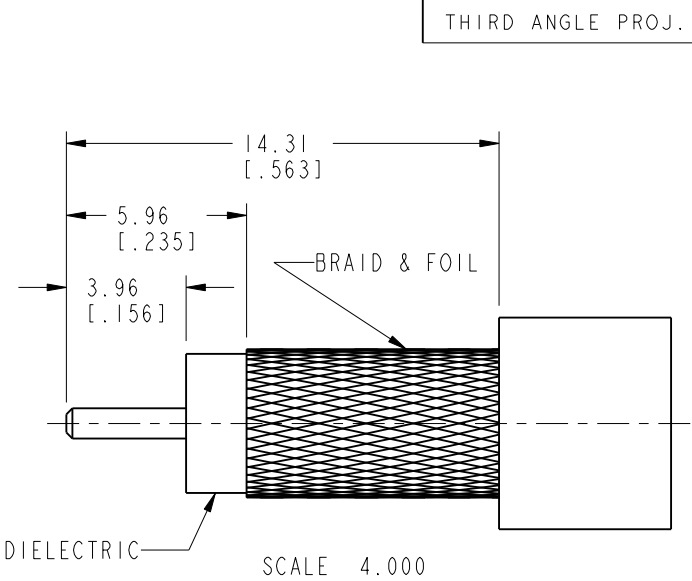
NOTES:

1. MATERIALS AND FINISHES:
BODY, FERRULE AND BAYONET SLEEVE - BRASS, NICKEL PLATING
OUTER CONTACT - BeCu, NICKEL PLATING
CONTACT - PHOSPHOR BRONZE, GOLD PLATING
INSULATOR - PTFE, NATURAL
2. ELECTRICAL:
A. IMPEDANCE: 75 OHM
B. FREQUENCY RANGE: DC - 4 GHz
C. RETURN LOSS: 30 dB MIN @ 3 GHz
D. DIELECTRIC WITHSTANDING VOLTAGE: 1000 VRMS, MIN.
E. INSULATION RESISTANCE: 10,000 MΩ MIN
3. MECHANICAL:
A. DURABILITY: 500 CYCLES MIN.
B. TEMPERATURE RANGE: -65° C TO +165° C
4. ENVIRONMENTAL:
A. THERMAL SHOCK PER MIL-STD-202 METHOD 107
TEST CONDITION B (EXCEPT HIGH TEMP @200°C)
B. VIBRATION: MIL-STD-202 METHOD 204 TEST CONDITION B
C. SHOCK: MIL-STD-202 METHOD 213 TEST CONDITION B
D. CORROSION: MIL-STD-202 METHOD 101
TEST CONDITION B 5% SALT SOLUTION
5. PACKAGING:
A. QUANTITY: SINGLE PACK
B. MARKING: BAG TO BE MARKED:
"AMPHENOL RF, 34-1025 DATE CODE
U.S. PATENT NO. 7,553,177"
6. HIGH DENSITY INSTALLATION/REMOVAL TOOL: 227-T2000.

7. CABLE ASSEMBLY INSTRUCTIONS:
A. TRIM CABLE AS SHOWN.
B. CRIMP CONTACT TO CABLE CENTER CONDUCTOR
WITH .042 INCH SQUARE DIE
C. CRIMP FERRULE WITH .255 INCH HEX

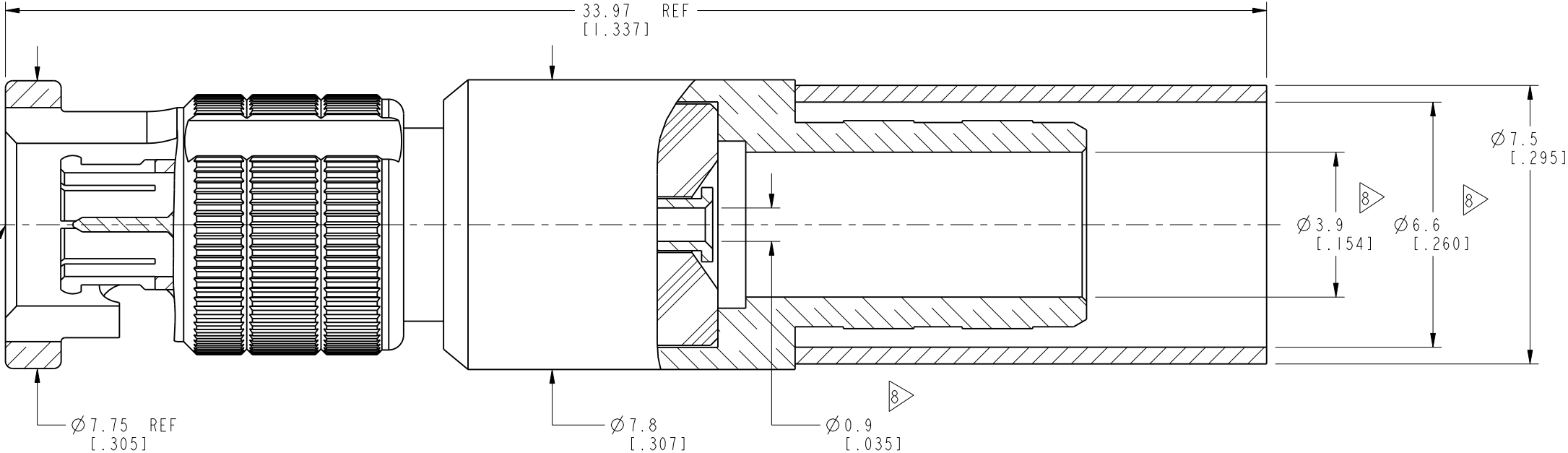
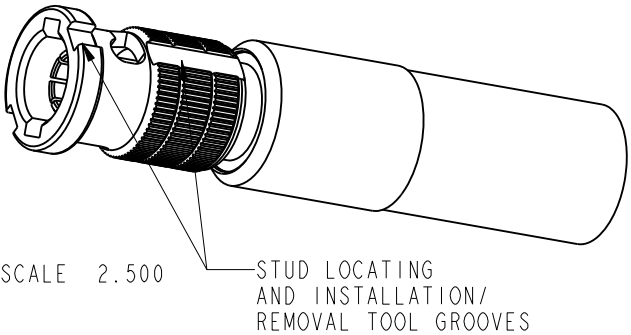
8. SHOWS CABLE ENTRY DIMENSIONS.

INTERFACE PER
349-50820
SERIES : HD-BNC PLUG



RECOMMENDED CABLE
STRIPPING DIMENSIONS

REVISIONS				
REV	DESCRIPTION	DATE	ECO	APPR
A	RELEASED TO MFG.	09-Oct-10	48162	TD
B	NOTE 5-B WAS CHANGED	23-Feb-11	48437	SH
C	COUPLING MECHANISM UPDATED	20-Aug-12	49203	SH



PROTECTED UNDER U.S. PATENT # 7,553,177

CUSTOMER OUTLINE DRAWING
ALL OTHER SHEETS ARE FOR INTERNAL USE ONLY

UNLESS OTHERWISE SPECIFIED, DIMENSIONS ARE IN METRIC AND TOLERANCES ARE: <0.5mm ± 0.05mm 0.5 - 6mm ±0.1mm 6 - 30mm ±0.2mm 30 - 120mm ± 0.3mm ANGLES ±1°	MATERIAL	DRAWN T.DENG	DATE 20-Aug-12	TITLE HD-BNC STR PLUG FOR BELDEN 1505A CABLE		Amphenol RF Danbury CT USA, Tainan, Taiwan, Shenzhen, China www.amphenolrf.com	
	SEE NOTES	ENGINEER A ARUN PRABU	DATE 13-May-10				
	REFERENCE EAR # 3983	APPROVED S.HSIEH	DATE 20-Aug-12				
	CONFIGURATION LEVEL:	CAD FILE		SCALE: 6.8:1.0	SHEET 2 OF 2	DRAWING NO.34-1025	
	FINISH			DWG SIZE B	REV C	ITEM NO.34-1025 PART NO.34-1025	