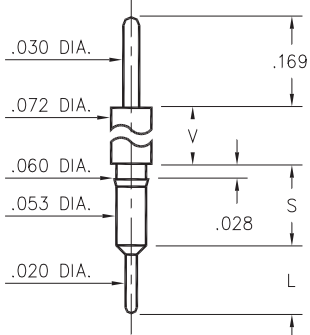


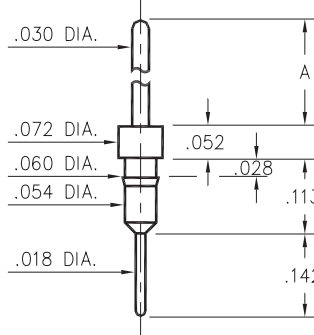
### 3400⇒3402/3405/3410



Basic Part Number	Shoulder Height V	Length S	Length L
3402-0	.052	.138	.115
3401-0	.100	.136	.115
3405-0	.169	.146	.115
3400-0	.481	.145	.115
3410-0	.934	.136	.124

**34XX-0-00-XX-00-00-03-0**  
Press-fit in .057 mounting hole

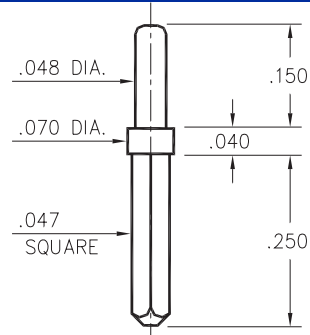
### 3411



Basic Part Number	Pin Length A
3411-0	.417
3411-1	.217

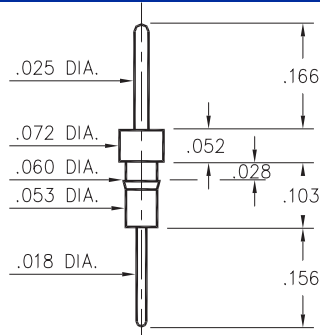
**3411-X-00-XX-00-00-03-0**  
Press-fit in .057 mounting hole

### 0600



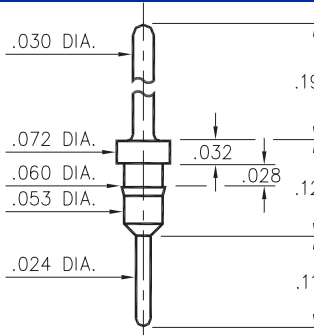
**0600-0-05-XX-00-00-01-0**  
Solder mount in .052 mounting hole

### 0290



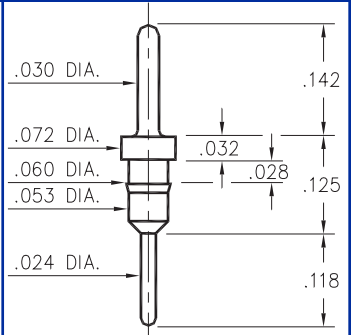
**0290-0-00-XX-00-00-03-0**  
Press-fit in .057 mounting hole

### 7007



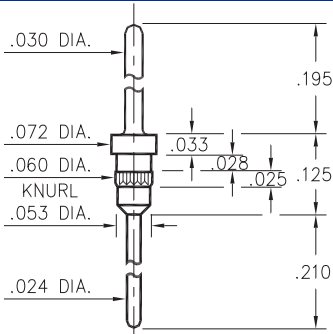
**7007-0-00-XX-00-00-03-0**  
Press-fit in .057 mounting hole

### 5016



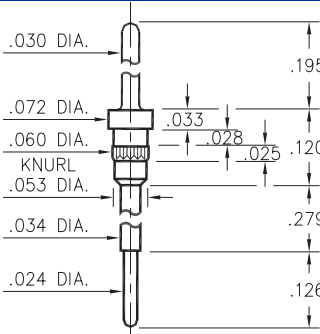
**5016-0-00-XX-00-00-03-0**  
Press-fit in .057 mounting hole

### 5005



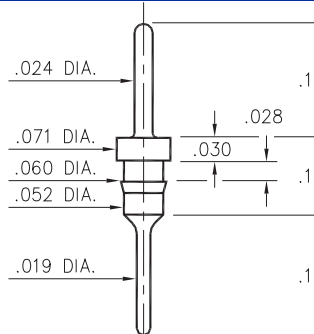
**5005-0-00-XX-00-00-03-0**  
Press-fit in .057 mounting hole

### 5107



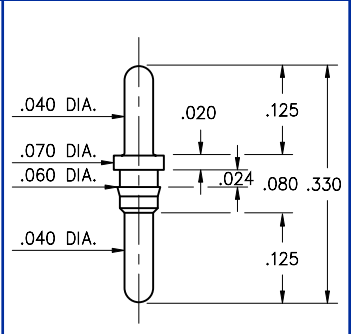
**5107-0-00-XX-00-00-03-0**  
Press-fit in .057 mounting hole

### 8919



**8919-0-00-XX-00-00-03-0**  
Press-fit in .057 mounting hole

### 3077



**3077-0-00-XX-00-00-03-0**  
Press-fit in .057 mounting hole

#### SPECIFICATIONS

**PIN MATERIAL:**  
Brass Alloy 360, 1/2 Hard  
(Except where noted)

**DIMENSION IN INCHES**  
**TOLERANCES ON:**  
LENGTHS: ±.005  
DIAMETERS: ±.002  
ANGLES: ± 2°

**ORDER CODE: XXXX - X - 0X - XX - 00 - 00 - 0X - 0**

**BASIC PART #**

**SPECIFY PIN FINISH:**  
01 200µ" TIN/LEAD OVER NICKEL  
80 200µ" TIN OVER NICKEL  
15 10µ" GOLD OVER NICKEL  
21 20µ" GOLD OVER NICKEL  
34 50µ" GOLD OVER NICKEL

