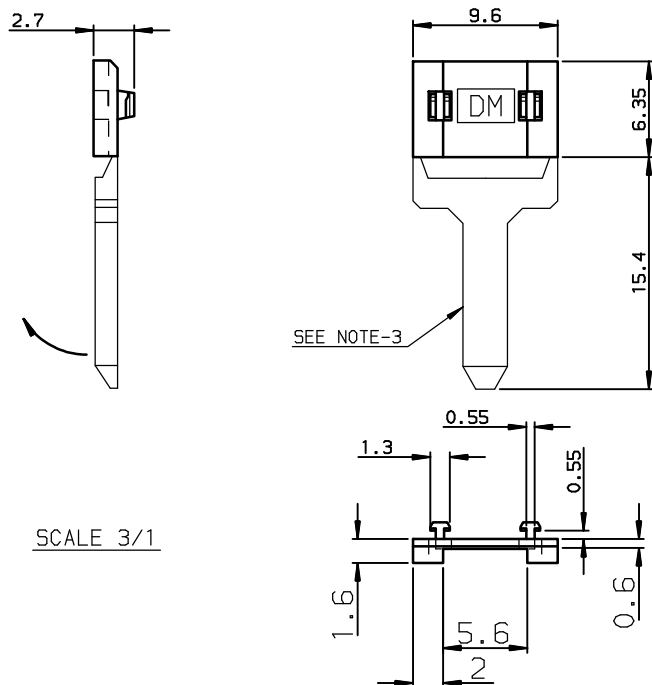
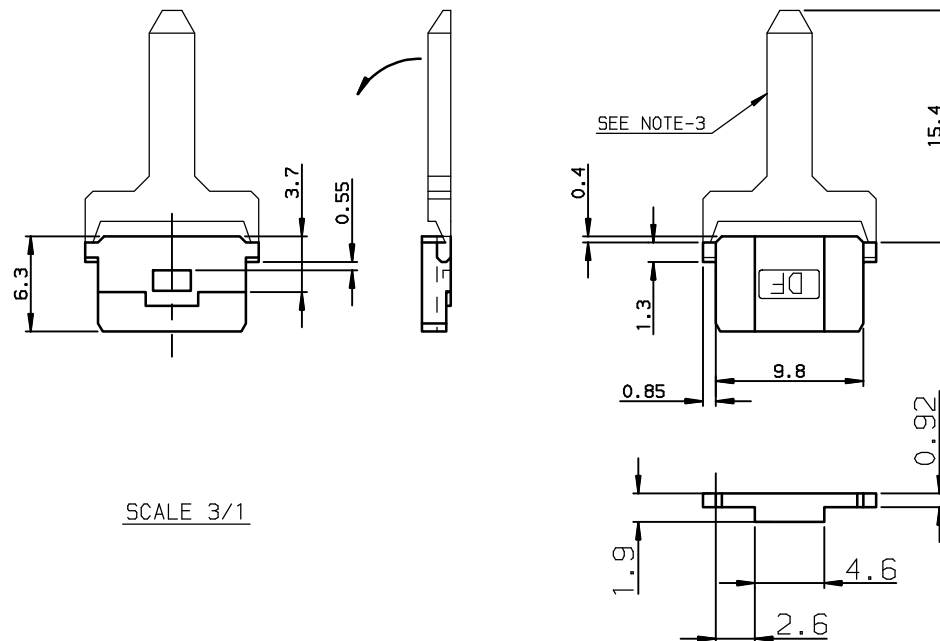


SINGLE KEY - TYPE DM P/N: HM13010LF



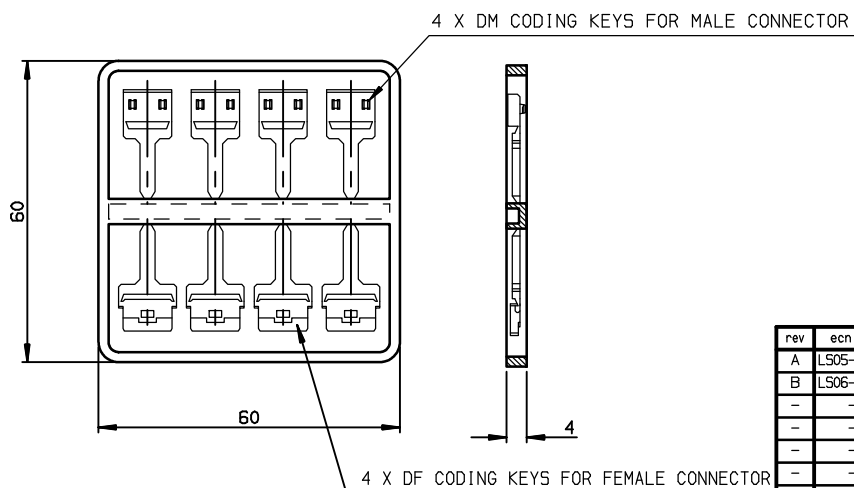
SCALE 3/1

SINGLE KEY - TYPE DF P/N: HM13006LF



SCALE 3/1

DF/DM CODING KEY KIT P/N: HM13049LF






- NOTE-1: MATERIAL = LCP  
 NOTE-2: SINGLE KEYS ARE DELIVERED IN PLASTIC BAG (QTE = 100)  
 NOTE-3: HOLDER FOR EASIER MOUNTING IN CONNECTOR HOUSING  
 NOTE-4: THESE KEYS ARE NOT COMPATIBLE WITH CABLE CONNECTOR LATCH  
 NOTE-5: EFFECTIVE CODING UP TO 6.50mm MATING LENGTH  
 NOTE-6: CODING KEYS DIMENSIONS ACCORDING TO IEC-48B(S.296) SPECIFICATION  
 NOTE-7: KEYS TYPE AF OR AM FORDID CONNECTOR MATING IN ALL CASES

NOTE:RoHS INFORMATIONS

- The "LF" product meets European union Directives and other country regulations as described in 65-22-008.
- The product is not intended to be exposed to a manufacturing solder process.
- Packaging spec: see 65-14-920.

European Views

www.fciconnect.com			surface ISO 1302 ✓		tolerance std ISO 406 ISO 1101		projection 		mm 	
TOLERANCES UNLESS OTHERWISE SPECIFIED										
Dr	ROULLIARD	2005/10/13	ANGULAR	LINEAR	0.X	±0.1	size A3	Scale 1		
Eng	TARON	2005/10/13			0.XX	±0.1				
Chr	LEGARE	2005/10/13			0.XX' ±2°	±0.1				
Appr	LEGARE	2005/10/13	Product family				METRAL	ECN LS06-0095		
							Spec ref -			
			HM1-CODING KEYS-BOARD TO BOARD				dwg no		C-8626-11289	
			DF/DM TYPE - COLOUR BROWN						Rev	
catalog no			-				CUSTOMER		sheet 1 of 1	

rev	ecn no	dr	date
A	LS05-0086	JTA	2005/10/13
B	LS06-0095	LGO	2006/07/05
-	-	-	-
-	-	-	-
-	-	-	-
-	-	-	-