

DWG. NO.  
SA20636

# 3 POLE LIMITER BLOCK

SUPERSEDES: SD20636-18

W	REVISED PER ECN10186	MPK 05-23-07	FLR 05-23-07
19	REVISED & REDRAWN. ADDED VIEW K TO SHOW NEW 100° COUNTER SUNK HOLE. SEE REV. REFERENCE PRINT. (ECN 3515)	FDH 04-23-96	JJK 04-23-96
REV	DESCRIPTION	BY DATE	CHKD DATE

		DRAWING TITLE																					
		BLOCK, 3 POLE LIMITER																					
LINEAR MEASURE: <div><div>INCH</div><div>mm</div></div> INCH [mm]		CAT NO.			F3H3M_ (SEE TABLE SHEET 2)																		
THIRD ANGLE PROJECTION		CAGE NO.: 09922		SIZE: A	<div>APPROVAL</div> <table><tr><td>DRAWN: GRB</td><td>02-09-07</td></tr><tr><td>CHKD : FLR</td><td>02-09-07</td></tr><tr><td>DSGN : CL</td><td>06-26-95</td></tr><tr><td>MFG : RR</td><td>02-09-07</td></tr><tr><td>QC : DK</td><td>02-09-07</td></tr><tr><td colspan="2">DRAWING SCALE: NONE</td></tr><tr><td>DRAWING NO.</td><td>REV</td></tr><tr><td>SA20636</td><td>W</td></tr><tr><td colspan="2">1 OF 5</td></tr></table>	DRAWN: GRB	02-09-07	CHKD : FLR	02-09-07	DSGN : CL	06-26-95	MFG : RR	02-09-07	QC : DK	02-09-07	DRAWING SCALE: NONE		DRAWING NO.	REV	SA20636	W	1 OF 5	
DRAWN: GRB	02-09-07																						
CHKD : FLR	02-09-07																						
DSGN : CL	06-26-95																						
MFG : RR	02-09-07																						
QC : DK	02-09-07																						
DRAWING SCALE: NONE																							
DRAWING NO.	REV																						
SA20636	W																						
1 OF 5																							
<div><div><div></div><div></div></div><div></div></div>		CUSTOMER		<div><div><div></div><div></div></div><div></div></div> <div>SOURIAU</div> <div>Connection Technology</div> <div>www.souriau.com</div>																			
TOLERANCES UNLESS OTHERWISE SPECIFIED																							
No. OF PLACES	INCH [mm]																						
ONE PLACE	±.1 [±3]																						
TWO PLACES	±0.02 [±.5]	INTERPRET THIS DRAWING IN ACCORDANCE WITH ASME Y14.5M - 1994.																					
THREE PLACES	±0.010 [±.25]																						
ANGLES±1°																							



www.souriau.com

DWG. NO.  
SA20636

NOTE: UNLESS OTHERWISE SPECIFIED.

- 1 3 POLE LIMITER BLOCKS ACCOMMODATES THREE 80-125 AMP LIMITERS FOR 120 VOLT D.C OR 200/115 VOLT A.C. 400 CYCLE - 3 PHASE AIRCRAFT CIRCUITS. FOR APPLICABLE TERMINAL LUGS, SEE TABLE 1.
- 2 LIMITERS (CATALOG NO'S FIL80, FIL100 AND FIL120) ARE PURCHASED SEPERATELY. SEE DRAWING SA20635.
- 3 COUNTER SUNK MOUNTING HOLES ACCOMMODATE NO. 8 FLAT HEAD MACHINE SCREWS. F3H3MSS ONLY: ACCOMMODATE NO. 8 - 100° INCLUDED ANGLE FLAT HEAD SCREW PER DAC SPECIFICATION 3D0068 (REF: 3D0068-08)
- 4 F3H3MSS ONLY: FUNCTIONAL TORQUE VALUE FOR THE HEX HEAD BOLT IS 90±5 IN-LBS [10.2±0.6 Nm]

DESCRIPTION TABLE

CATALOG NUMBER	DESCRIPTION	MTG. HOLE COUNTER SINK ANGLE
F3H3M	3 POLE LIMITER BLOCK WITH BRASS ROUND HEAD TERMINAL LUG MTG. SCREW	82° INCLUDED
F3H3MSS	3 POLE LIMITER BLOCK WITH STEEL HEX. HEAD TERMINAL MTG. BOLT	100° INCLUDED

TABLE 1

AIRCRAFT CABLE	HYDENT TERMINAL
COPPER NO. 8	YAV8C-L1
COPPER NO. 6	YAV6C-L
COPPER NO. 4	YAV4C-L
COPPER NO. 2	YAV2C-L1
ALUM NO. 8	YAV8CA-L1
ALUM NO. 6	YAV6CA-L1
ALUM NO. 4	YAV4CA-L
ALUM NO. 2	YAV2CA-L1

DRAWING TITLE

**BLOCK, 3 POLE LIMITER**

CAT NO.

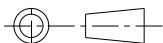
**F3H3M (SEE TABLE)**

CAGE NO.: 09922

SIZE: A

LINEAR MEASURE:  INCH [mm]

THIRD ANGLE PROJECTION



TOLERANCES UNLESS OTHERWISE SPECIFIED

No. OF PLACES INCH [mm]

ONE PLACE ±.1 [±.3]

TWO PLACES ±0.02 [±.5]

THREE PLACES ±0.010 [±.25]

ANGLES ±1°

**CUSTOMER**

INTERPRET THIS DRAWING IN ACCORDANCE WITH ASME Y14.5M - 1994.



[www.souriau.com](http://www.souriau.com)

APPROVAL  
DRAWN: GRB 02-09-07  
CHKD : FLR 02-09-07  
DSGN : CL 06-26-95  
MFG : XXX 02-09-07  
QC : XXX 02-09-07

DRAWING SCALE: NONE

DRAWING NO. REV

SA20636

W

2 OF 5

PROVE CONTACT THE DOCUMENT CONTROL CENTER FOR THE LATEST REVISION.

DWG. NO.  
SA20636

MATERIAL:

BASE: MELMAC 592 OR EQUIVALENT PER MIL-P-14, TYPE MME  
SPACER: GLASS BASE MELAMINE, COLOR NATURAL, NEMA GRADE  
G5-CD-F GRADE GB-2BM OR EQUIVALENT  
CONTACT CLIPS: COPPER ALLOY  
RIVETS: BRASS  
THREADED BASE INSERT: BRASS PER ASTM B16

F3H3M ONLY:

1/4 -28UNF-2A X .500 [12.7] LG  
ROUND HEAD MACHINED SCREW  
PER AN520UB416-8: COPPER ALLOY  
LOCK WASHER - 1/4" PER  
AN935.416: SILICON BRONZE  
FLAT WASHER - 1/4" X .040[1.02]  
THICK PER AN93490A029: SILICON BRONZE

F3H3MSS ONLY:

1/4-28UNJF-3A X .550 [13.97]  
LG HEX HEAD BOLT PER NAS6704U2: CORROSION RESISTANT STEEL  
LOCK WASHER 1/4" X .062 [1.57]  
THICK PER MS35338 - 139: CORROSION RESISTANT STEEL  
FLAT WASHER- 1/4" X .032 [0.81]  
THICK PER NAS1149C0432R: CORROSION RESISTANT STEEL


FINISH:

CONTACT CLIPS: SILVER PLATED  
RIVETS: TIN PLATED  
F3H3M ONLY:  
1/4-28 UNF-2A ROUND HEAD SCREW  
LOCK WASHER AND FLAT WASHER: TIN PLATED

F3H3MSS ONLY:  
1/4-28 UNJF-3A HEX HEAD BOLT  
LOCK WASHER AND FLAT WASHER: PASSIVATED PER QQ-P-35  
THREADED BASE INSERT: TIN PLATED

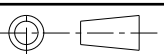
WEIGHT: 8.80 OZ [249.47 GRAMS] MAX  
DOES NOT INCLUDE LIMITERS AND TERMINAL LUGS.

LINEAR MEASURE:



INCH [mm]

THIRD ANGLE PROJECTION



TOLERANCES UNLESS OTHERWISE SPECIFIED

No. OF PLACES	INCH [mm]
ONE PLACE	±.1 [±3]
TWO PLACES	±0.02 [±.5]
THREE PLACES	±0.010 [±.25]
ANGLES±1°	

DRAWING TITLE

BLOCK, 3 POLE LIMITER


CAT NO.

F3H3M\_ (SEE TABLE SHEET 2)

CAGE NO.: 09922

SIZE: A

CUSTOMER



www.souriau.com

INTERPRET THIS DRAWING IN ACCORDANCE WITH ASME Y14.5M - 1994.

APPROVAL

DRAWN:	GRB	02-09-07
CHKD :	FLR	02-09-07
DSGN :	CL	06-26-95
MFG :	XXX	02-09-07
QC :	XXX	02-09-07
DRAWING SCALE: NONE		
DRAWING NO.		REV
SA20636		W
3 OF 5		

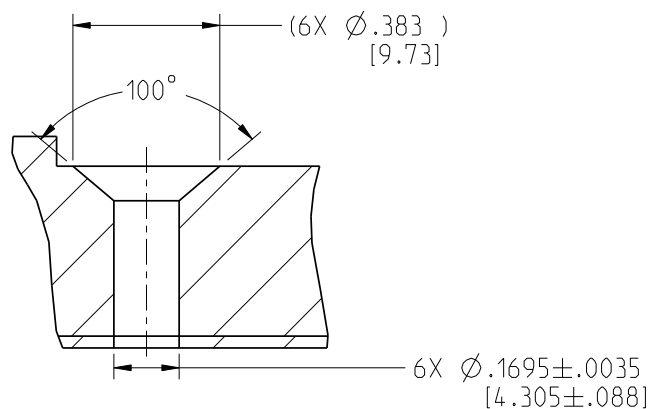
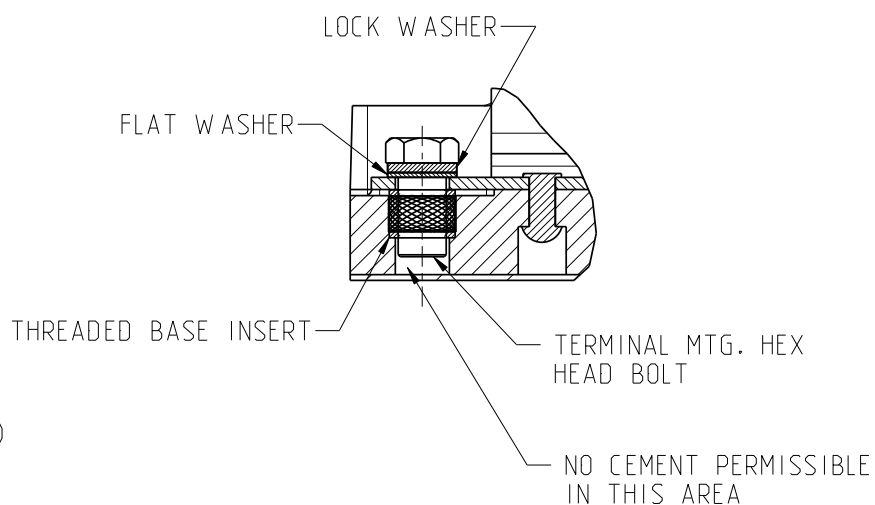
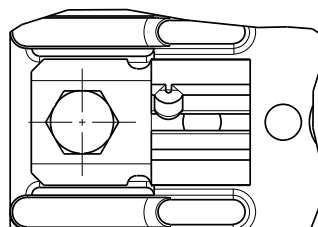


CONTACT THE DOCUMENT CONTROL CENTER FOR THE LATEST REVISION.

PRO-E

DWG. NO.

SA20636



ALTERNATE VIEW J. SHT 4  
CAT NO. F3H3MSS ONLY



ALTERNATE VIEW K, SHT 4  
CAT. NO. F3H3MSS ONLY  
SCALE 2:1

DRAWING TITLE

## BLOCK, 3 POLE LIMITER

CAT NO.

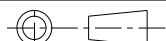
**F3H3M\_ (SEE TABLE SHEET 2)**

LINEAR MEASURE:  INCH [mm]

THIRD ANGLE PROJECTION

CAGE NO.: 09922

SIZE: A



TOLERANCES  
UNLESS OTHERWISE SPECIFIED

No. OF PLACES INCH [mm]

ONE PLACE ±.1 [±.3]

TWO PLACES ±0.02 [±.5]

THREE PLACES ±0.010 [±.25]

ANGLES ±1°

# CUSTOMER

INTERPRET THIS DRAWING IN ACCORDANCE  
WITH ASME Y14.5M - 1994.



[www.souriau.com](http://www.souriau.com)

APPROVAL

DRAWN: GRB 02-09-07

CHKD: FLR 02-09-07

DSGN: CL 06-26-95

MFG: DH 02-09-07

QC: BH 02-09-07

DRAWING SCALE: 1:2

DRAWING NO. REV

SA20636

W

5 OF 5

# Mouser Electronics

Authorized Distributor

Click to View Pricing, Inventory, Delivery & Lifecycle Information:

[Souriau:](#)

[F3H3M](#)