

| DIALIGHT PART NUMBER | LED COLOR |
|-------------------------|-------------------------|
| 551-0212-801F | GREEN, TINTED DIFFUSED |
| 551-0312-802F | YELLOW, TINTED DIFFUSED |
| 551-0412-803F | RED, TINTED DIFFUSED |

| REV | ECN NO | REVISIONS | DRN | CKD | APP | DATE |
|-----|--------|-------------|-----|-----|-----|--------|
| A | — | NEW RELEASE | AJF | SM | NO | 8-3-11 |

RoHS COMPLIANT 551-OX12-80XF

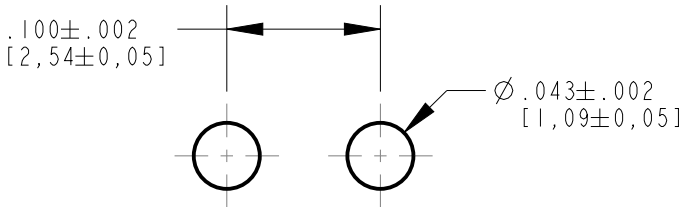
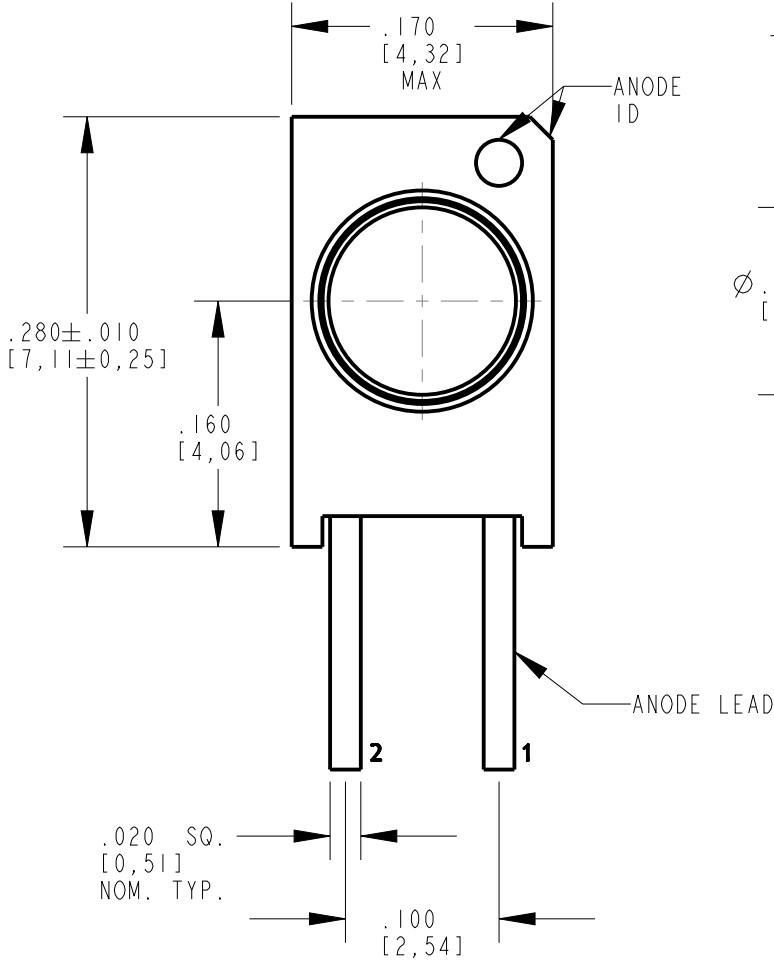
Part Numbers with the "F" suffix ending are RoHS Compliant.
For example: 551-0212-801F
Packaging is marked with "RoHS Compliant" label or equivalent markings. Parts can be wave soldered, dip soldered or hand soldered using typical lead-free soldering process with max 260°C temp. for 5 sec.

| OPERATING CHARACTERISTICS AT 25° C AMBIENT | | | | | | |
|--|-----------|------|------|------|--------|------------------------|
| LED CHARACTERISTICS | LED COLOR | MIN. | TYP. | MAX. | UNITS | TEST CONDITIONS |
| LUMINOUS INTENSITY | GREEN | 5.6 | 16.0 | — | mcd | I _F = 10 mA |
| | YELLOW | 2.2 | 6.3 | — | | |
| | RED | 3.6 | 10.0 | — | | |
| DOMINANT WAVELENGTH | GREEN | 567 | 572 | 577 | nm | |
| | YELLOW | 582 | 587 | 592 | | |
| | RED | 625 | 630 | 635 | | |
| PEAK WAVELENGTH | GREEN | — | 563 | — | nm | |
| | YELLOW | — | 585 | — | | |
| | RED | — | 650 | — | | |
| FORWARD VOLTAGE | GREEN | — | 2.1 | 3.0 | V | I _F = 10 mA |
| | YELLOW | — | 2.1 | 3.0 | | |
| | RED | — | 2.0 | 3.0 | | |
| REVERSE CURRENT | GREEN | — | — | 10 | μA | V _R = 3 V |
| | YELLOW | — | — | 10 | | |
| | RED | — | — | 10 | | |
| VIEWING ANGLE | ALL | — | 45 | — | DEGREE | |

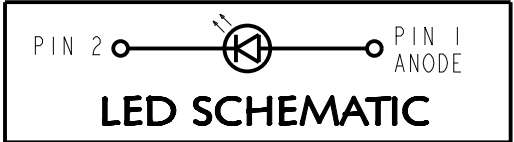
| ABSOLUTE MAXIMUM RATINGS AT 25° C AMBIENT | GREEN | YELLOW | RED | UNITS |
|---|-------------|--------|-----|-------|
| POWER DISSIPATION | 75 | 60 | 60 | mW |
| PEAK FORWARD CURRENT (1/10 DUTY CYCLE, 0.1ms PULSE WIDTH) | 60 | 60 | 60 | mA |
| CONTINUOUS FORWARD CURRENT | 25 | 20 | 20 | mA |
| LINEAR DERATING FROM 50°C | 0.5 | 0.5 | 0.5 | mA/°C |
| REVERSE VOLTAGE | 3 | 3 | 3 | V |
| LEAD SOLDERING TEMPERATURE (.063" [1.6mm] FROM BODY) FOR 5 SEC. | 260 | | | °C |
| OPERATING TEMPERATURE | -25 TO +85 | | | °C |
| STORAGE TEMPERATURE | -30 TO +100 | | | °C |

NOTES:

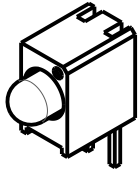
- LED LEAD DIMENSIONS SHOWN ARE MEASURED AT HOUSING EXIT.
- LEADS TO FIT INTO HOLES SPACED AS PER PATTERN.
- PIN NUMBERS FOR REFERENCE ONLY, DESIGNATION NON-EXISTENT ON PART.
- DIALIGHT PART NUMBERS: 551-OX12-80XF.
- THIS ASSEMBLY CONTAINS ELECTROSTATIC DISCHARGE SENSITIVE DEVICES (ESDS). MAINTAIN ALL PRECAUTIONARY MEASURES DURING ASSEMBLY, HANDLING, AND STORAGE IN ACCORDANCE WITH IPC-A-610.



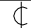

RECOMMENDED HOLE PATTERN GAUGE



ATTENTION:
OBSERVE PRECAUTIONS FOR
HANDLING ELECTROSTATIC
SENSITIVE DEVICES



SCALE 2.000

| | | |
|---|---|--------------|
| THIS DRAWING AND THE CONTENTS HEREIN ARE CONFIDENTIAL AND THE SOLE PROPERTY OF DIALIGHT. REPRODUCTION OF THIS DRAWING OR CONSTRUCTION OF ANY PARTS WITHIN THIS DRAWING ARE FORBIDDEN WITHOUT THE WRITTEN CONSENT OF DIALIGHT. | | |
| SCALE: 8.000 | DRAWING NUMBER C-17879 | REV A |
| ALL DIM'S IN: INCHES (MM) | | |
| TOLERANCES: UNLESS OTHERWISE SPECIFIED | TITLE Ø 3mm CBI W/ .160"  REVERSE POLARITY | |
| FRACTIONS: ±1/64 DECIMALS (.XX): ±.02 DECIMALS (.XXX): ±.015 | | |
| ANGLES: ±1° | MATERIAL - | |
| FINISH: - |  Dialight 1501 ROUTE 34 SOUTH FARMINGDALE, NJ 07727 | |
| | | |
| FSCM 83330 | SHEET 1 OF 1 FAMILY TABLE: | |