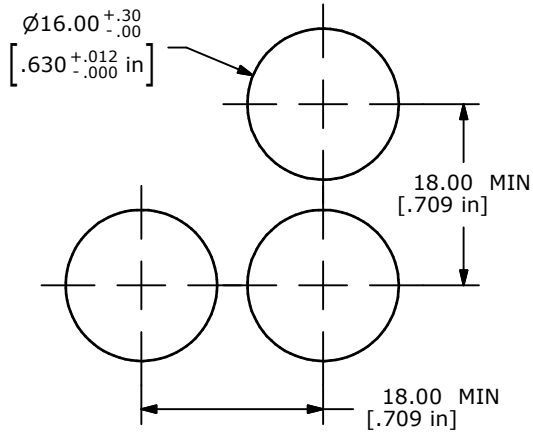
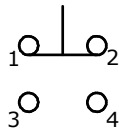


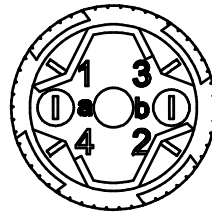
| ITEM | QTY | PART NUMBER | DESCRIPTION |
|------|-----|-------------|----------------|
| 1 | 1 | F040006 | D16EER11 |
| 2 | 1 | F050115 | ROUND FLAT RED |



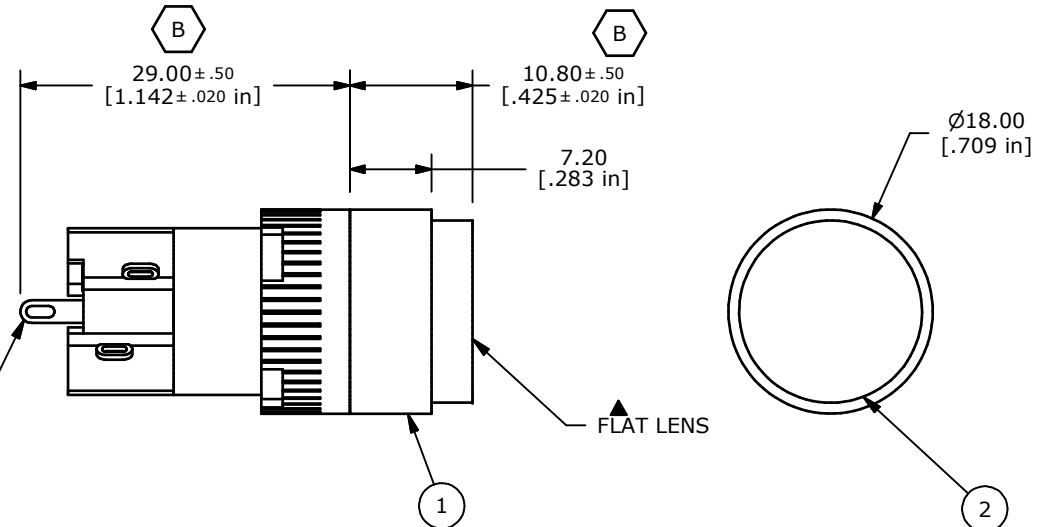
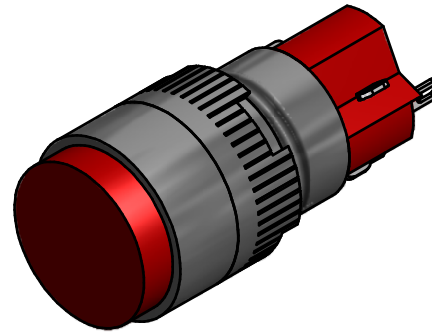
PANEL MOUNTING.
 .5-.5.0 [.020-.197 in] THICK PANEL



SPDT
CONTACT CONFIGURATION



TERMINALS A AND B ARE INCLUDED
 FOR MECHANICAL SUPPORT ONLY.



NOTE:

1. ALL DIMENSIONS IN MM [INCH]
2. GENERAL TOLERANCE: X.X=±0.4
X.XX=±0.25
3. TERMINAL NUMBERS FOR REF ONLY
4. ELECTRICAL LIFE: 50,000 OPERATIONS
5. INSULATION RESISTANCE: 1,000 MΩ MIN.
6. OPERATING TEMP.: -25°C to 70°C
- ▲ 7. LAMP VOLTAGE: NO LAMP
8. CONTACT RATING: 5A @ 250 VAC
6A @ 24 VDC
8A @ 125 VAC
9. ▲ DENOTES CRITICAL PARAMETER.
10. CONTACT RESISTANCE: 20 mΩ (INITIAL)
11. INGRESS PROTECTION: IP40
12. 2002/95/EC (ROHS) COMPLIANT
13. ACTUATION FORCE: 300g

| | | | | |
|-----|--------|-------------------------|---------|-----|
| B | 21015 | MAKE NOTED CORRECTIONS | 2/8/13 | EBP |
| A | 15353 | RELEASED FOR PRODUCTION | 10/3/05 | PH |
| REV | PCR NO | DESCRIPTION | DATE | BY |

THE INFORMATION CONTAINED IN THIS DOCUMENT IS PROPRIETARY
 TO E-SWITCH AND IS NOT TO BE COPIED OR TRANSFERRED



TITLE D16EER110RED

SCALE 2:1

DATE 10/3/2005

DR PH

DWG XF0647P

REV B