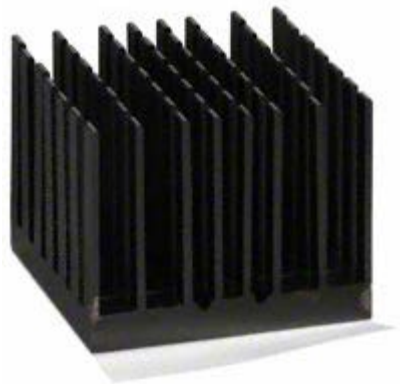


BGA Heat Sink - High Performance Cross-Cut Tape On



*Image above is for illustration purpose only.

ATS Part#:	ATS-55310W-C1-R0
Description:	31.00 x 31.00 x 24.50 mm BGA Heat Sink - High Performance Cross-Cut Tape On
Heat Sink Type:	Cross-cut
Heat Sink Attachment:	Tape On
Equivalent Part Number:	ATS-55310W-C2-R0

Features & Benefits

- High efficiency cross-cut fin design provides low pressure drop characteristics
- Large surface area increases heat sink performance
- Designed for BGAs and surface mount packages
- Comes preassembled with high performance thermal interface material

Thermal Performance

AIR VELOCITY		@200 LFM 1.0 M/S	@300 LFM 1.5 M/S	@400 LFM 2.0 M/S	@500 LFM 2.5 M/S	@600 LFM 3.0 M/S	@700 LFM 3.5 M/S	@800 LFM 4.0 M/S
THERMAL RESISTANCE	Unducted Flow	4 °C/W	NA °C/W	NA °C/W	NA °C/W	NA °C/W	NA °C/W	NA °C/W
	Ducted Flow	0	N/A	N/A	N/A	N/A	N/A	N/A

Product Detail

Schematic Image	Dimension A	Dimension B	Dimension C	Dimension D	TIM	Finish
	31.00 mm	31.00 mm	24.50 mm	N/A mm	T412	BLACK-ANODIZED
<p>Notes:</p> <ul style="list-style-type: none">• Dimension A and B refer to component size.• Dimension C is the heat sink height from the bottom of the base to the top of the fin field.• ATS-55310W-C2-R0 is the exact heat sink assembly with an equivalent thermal interface material (Saint-Gobain C675).• Thermal performance data are provided for reference only. Actual performance may vary by application.• ATS reserves the right to update or change its products without notice to improve the design or performance.• ATS certifies that this heat sink assembly is RoHS-6 and REACH compliant.• Contact ATS to learn about custom options available.						

*Image above is for illustration purpose only.