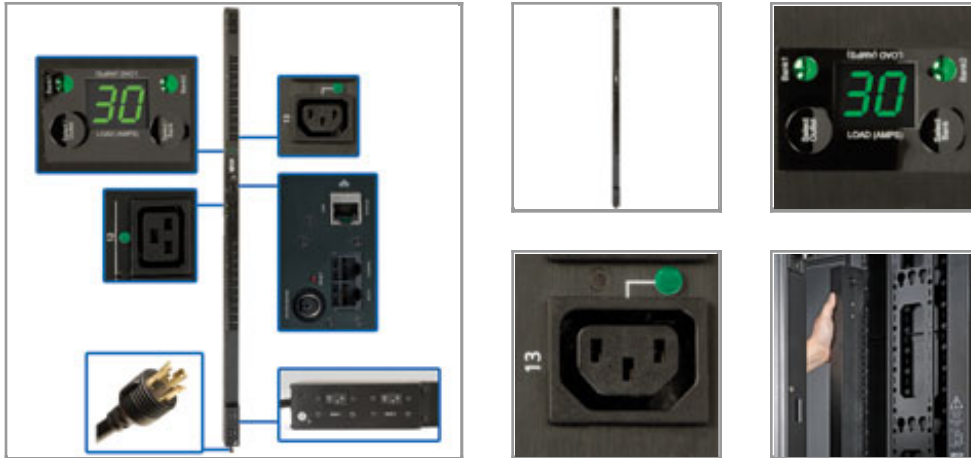


## Single-Phase Switched PDU with outlet level metering, 5/5.8kW 30A 208/240V, 0U Vertical Rackmount, C19 & C13 outlets, L6-30P input

MODEL NUMBER: PDUMVR30HVNET



### Description

Tripp Lite single phase Switched PDU / Power Distribution Unit with individual outlet metering offers advanced network control and monitoring with the ability to turn on, turn off, recycle or lock-out power to each individual receptacle, monitor site electrical conditions and remotely monitor output power consumption for each individual outlet. Built-in current monitoring offers 1% billing grade accuracy. PowerAlert interface supports remote control and custom notification of user-specified conditions via email, secure web, SNMP, Telnet or SSH interface. Individually switched outlets can be controlled in real-time to remotely reboot unresponsive network hardware, or be custom programmed for user-defined power-up and power-down sequences to ensure proper startup of interdependent IT systems and prevent inrush-related overloads as network equipment is first energized. Unused PDU outlets can be electronically locked off to prevent the connection of unauthorized hardware. PDU output current consumption in amps is continuously displayed locally via visual meter and remotely via web/network interface to warn of potential overloads before critical IT mains or branch breakers trip.

### Features

- 208/240V 30A Switched PDU with built-in web/network interface in 0U 70in / 178cm vertical rackmount form factor; 30A max capacity (agency derated to 24A)
- Attached NEMA L6-30P 208/240V single phase input with 10 ft. / 3m cord
- 24 switched outlets (4 C19 / 20 C13)
- Supports power-on, power-off or reboot of each outlet on a real-time or programmable basis
- Enables reboot of locked equipment, custom power-on/power-off sequences, load-shedding and disabling unused outlets
- Network interface provides PDU control and data regarding input voltage and load level for each load bank or each individual outlet in amps
- Current monitoring provides 1% billing grade accuracy
- Digital display continuously report output load level in amps
- Display also supports IP-address self-identification and 180 degree display rotation
- Supports user-specified alarm notification thresholds

### Highlights

- Switched 30A 208/240V PDU, 0U 70 in. / 178cm Vertical Rackmount Format
- Reports voltage, frequency & load per-outlet or load bank via ethernet interface
- Visual current meter, Toolless button mount installation
- NEMA L6-30P input, attached 10 ft. / 3m cord
- 24 switched outlets (4 C19 / 20 C13) with cord retention brackets
- Temperature, humidity and contact closure monitoring options

### Applications

- Ideal for network configurations requiring a switched, metered and monitored PDU supporting individual outlet rebooting, load shedding and remote web/network current monitoring of critical networking components

### Package Includes

- Rackmount PDU
- Rackmount brackets
- PDUMVROTATEBRKT



**Tripp Lite**  
1111 W. 35th Street  
Chicago, IL 60609 USA  
Telephone: 773.869.1234  
www.tripplite.com

- In-rack environmental reporting with optional ENVIROSENSE temperature / humidity sensor and rack access notification with up to 4 optional SRSWITCH door sensors
- DHCP/Manual configuration support
- 10/100 Mbps auto-sensing
- Real-time clock backup maintains the time of day and date even if the PDU is unpowered
- Tiered access privileges allow an administrator and a guest to login via web browser
- Alert notifications via email or SNMP traps offer immediate event notification
- Firmware upgrade ability supports future product enhancements
- Supports HTTP, HTTPS, PowerAlert Network Management System, SMTP, SNMPv1, SNMPv2, Telnet, SSH, FTP, DHCP, BOOTP, NTP protocols
- Fully compatible with FREE PowerAlert Network Management System / NMS Software
- Included cord retention brackets
- Toolless mounting supported in button-mount compatible racks, plus nut-and-bolt mounting brackets for other mounting applications
- TAA Compliant Version Available - Order Tripp Lite PDUMVR30HVNETAA

## Specifications

General Info	
Product Group	PDUS
OVERVIEW	
PDU Type	Switched
OUTPUT	
Output Capacity Details	5kW (208V input), 5.8kW (240V input), 4.8kW (200V input); 30A maximum (agency de-rated to 24A continuous)
Frequency Compatibility	50 / 60 Hz
Circuit Breaker (amps)	2 15A breakers protect 12 outlets each
Output Nominal Voltage	200-240V nominal, single phase
Outlet Quantity / Type	4 C19, 20 C13
Outlet Type	C19, C13
Customized Load Management Receptacles	Each outlet is individually controllable via remote interface
INPUT	
PDU Input Voltage	200; 208; 240
Maximum Input Amps	30
Maximum Input Amps Details	Agency de-rated to 24A continuous
PDU Plug Type	NEMA L6-30P
Input Cord Length (ft.)	10
Input Cord Length (m)	3



**Tripp Lite**  
1111 W. 35th Street  
Chicago, IL 60609 USA  
Telephone: 773.869.1234  
[www.tripplite.com](http://www.tripplite.com)

Input Phase	Single-Phase
<b>LEDS ALARMS &amp; SWITCHES</b>	
Front Panel LCD Display	LCD display reports load level for load bank 1 (upper 12 outlets), bank 2 (lower 12 outlets), bank 1 & 2 combined (all 24 outlets) or each individual outlet to the nearest amp
Switches	Separate load bank and outlet selection buttons
Front Panel LEDs	24 power availability LEDs confirm power off/on status for each built-in outlet
<b>PHYSICAL</b>	
Shipping Dimensions (hwd / in.)	4.5 x 6.1 x 75.8
Shipping Dimensions (hwd / cm)	11.4 x 15.5 x 192.5
Shipping Weight (lbs.)	16
Shipping Weight (kg)	7.3
Unit Dimensions (hwd / in.)	70 x 2.2 x 2.6
Unit Dimensions (hwd / cm)	178 x 5.6 x 6.6
Unit Weight (lbs.)	12
Unit Weight (kg)	5.4
Style	Vertical Rackmount
Form Factors Supported	0U vertical rackmount; includes rackmount brackets. Supports toolless mounting in button-mount compatible racks
PDU Form Factor	Vertical (0U)
<b>ENVIRONMENTAL</b>	
Relative Humidity	0-95% non-condensing
<b>COMMUNICATIONS</b>	
SNMP Compatibility	Built-in network interface provides remote monitoring via web, Telnet, and SNMP management systems. Remote management enables outlets to be turned on and off individually
<b>CERTIFICATIONS</b>	
TAA Compliant Option	TAA Compliant Version Available - Order Tripp Lite PDUMVR30HVNETA
Certifications	Tested to UL 60950-1 (USA, Canada), Class A (Emissions), NOM (Mexico), RoHS compliant
<b>WARRANTY</b>	
Product Warranty Period (Worldwide)	2-year limited warranty

© 2014 Tripp Lite. All rights reserved. All trademarks are the sole property of their respective owners. Tripp Lite has a policy of continuous improvement. Specifications are subject to change without notice. Photos may differ slightly from final products.