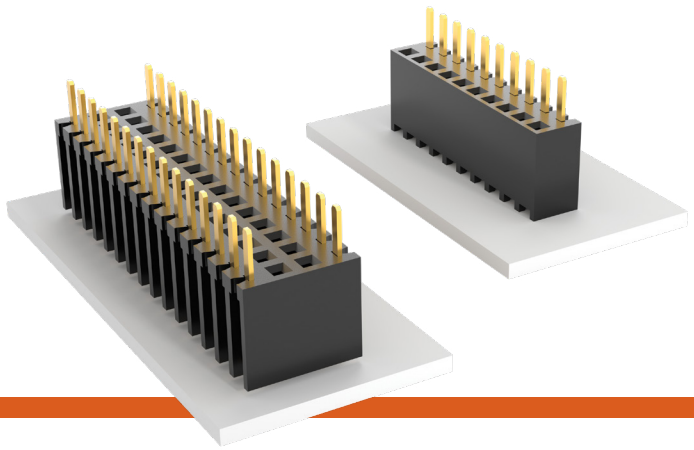


BOTTOM MOUNT SOCKET STRIPS

(2.54 mm) .100" PITCH • BSW SERIES



BSW

Mates:

TSW, MTSW, HTSW,
MTLW, TSM, EW, ZW,
HW, DW, PHT

FEATURES

- Bottom mount socket strips accept .025" SQ terminals.
- Ideal for soldering and plugging from the same side of the board.
- For low profile connections and high temperature soldering.

SPECIFICATIONS

Insulator Material:

Black Thermoplastic

Contact Material:

Phosphor Bronze

Plating:

Au or Sn over

50 μ " (1.27 μ m) Ni

Operating Temp Range:

-55 °C to +125 °C with Gold

-55 °C to +105 °C with Tin

Insertion Depth:

(3.68 mm) .145" to

(6.35 mm) .250"

plus board thickness

PROCESSING

Lead-Free Solderable:

Wave only

ALSO AVAILABLE

Contact Samtec

Other Platings

| BSW | - | 1 | - | NO. PINS PER ROW | - | LEAD STYLE | - | PLATING OPTION | - | ROW OPTION |
|-----|---|---|---|---------------------|---|---------------|---|-------------------|---|---------------|
|-----|---|---|---|---------------------|---|---------------|---|-------------------|---|---------------|

02 thru 36

-04

= Standard
Lead

-24

= Low
Insertion Force

-L

= 10 μ " (0.25 μ m)
Gold contact,
Matte Tin on tail

-G

= 20 μ " (0.51 μ m)
Gold contact,
Gold Flash on tail

-T

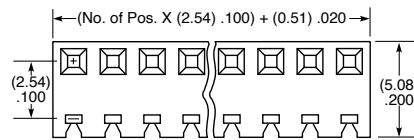
= Matte Tin
(Not available with
Low Insertion Force)

-S

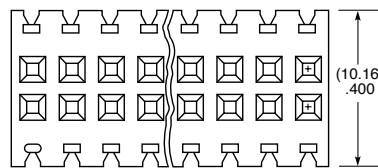
= Single Row

-D

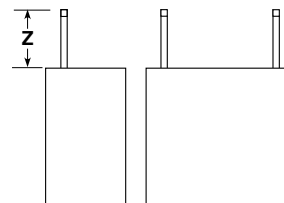
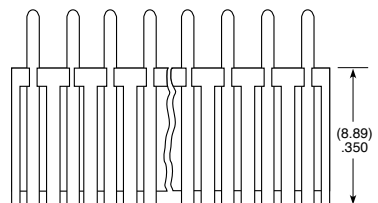
= Double Row



-S



-D

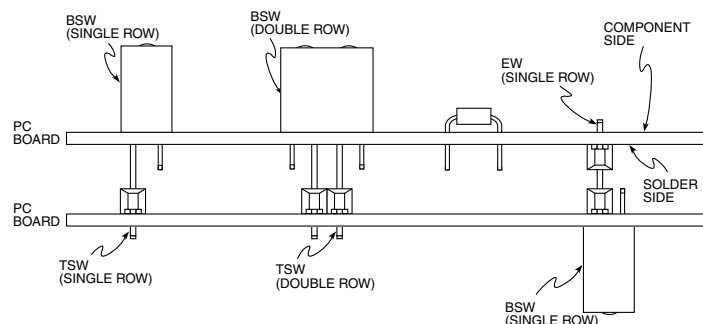


-S

-D

| ROW OPTION | Z |
|---------------|-------------|
| -S | (4.31) .170 |
| -D | (4.32) .170 |

APPLICATIONS



Note:

Some lengths, styles and
options are non-standard,
non-returnable.