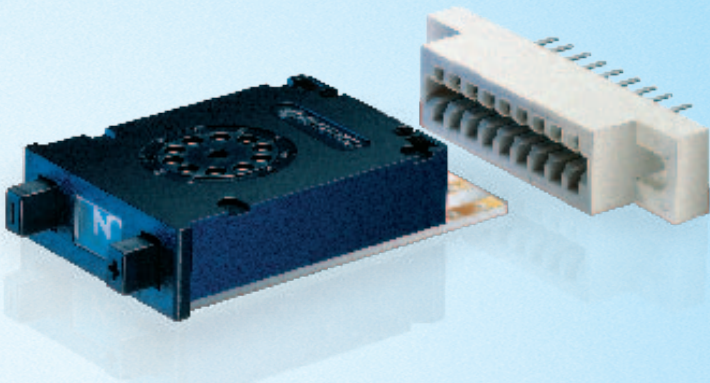


Connectors



Connectors make the connection of the selector switches very easy. The female connectors are available with and or without flange. Terminals of the connectors either solder pin or solder lugs.

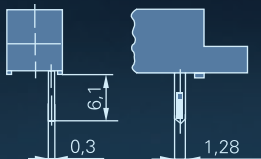
| Connector | | without flange | | with flange | |
|-----------|------------|----------------|-------------|-------------|-------------|
| Series | Code | Solder pins | Solder lugs | Solder pins | Solder lugs |
| PA | C, E, G, H | C2KO–P107 | C2KO–N107 | C2KF–P109 | C2KF–N109 |
| | F | C2KO–P108 | C2KO–N108 | C2KF–P110 | C2KF–N110 |
| | P | C2KO–P130 | C2KO–N130 | C2KF–P129 | C2KF–N129 |
| | A | C2RO–P8AD | C2RO–N8AD | C2RF–P8AH | C2RF–N8AH |
| PE | C, E, G, H | C2RO–P111 | C2RO–N111 | C2RF–P116 | C2RF–N116 |
| | F | C2RO–P113 | C2RO–N113 | C2RF–P118 | C2RF–N118 |
| | P | C2RO–P135 | C2RO–N135 | C2RF–P136 | C2RF–N136 |

| Series | with flange | | | | | | |
|--------|----------------------|-----|------|----|----|----|------|
| | without flange | | | | | | |
| | Spacing A | B | C | D | E | F | G |
| PA | 4 x 2,54 | 1,3 | 14,3 | 16 | 22 | 28 | 2,35 |
| PE | 10 x 2,0 8 x 2,54 | 1,3 | 22,3 | 24 | 30 | 36 | 2,35 |

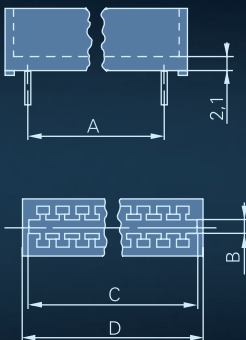
With solder pins



With solder lugs



Without flange



With flange

