



Feature -

water proof IP67 sealed
metal switch
panel mount
full color LED illuminated available

Application -

consumer products
computer products
instrumentation
communication equipments

► SPECIFICATIONS

SWITCH SPECIFICATIONS	
POLE - POSITION	SPST , Lock type are Available
CONTACT RATING	50 mA 12 V DC
CONTACT RESISTANCE	100 mΩ MAX.
INSULATION RESISTANCE	100 MΩ MIN. 500 V DC
DIELECTRIC STRENGTH	Breakdown is not Allowable ; 500 V AC for 1 Minute
OPERATING FORCE	300 ± 100 gf
OPERATING LIFE	100,000 cycles
OPERATING TEMPERATURE RANGE	-20°C ~ 70°C
SEALING	PANEL SEALED TO IP67

LED SPECIFICATIONS		Value / LED Color			
	Unit				
		Blue	Green	Red	Yellow
ATTENTION LEDs are Electrostatic Sensitive devices					
FORWARD CURRENT	If	20	20	20	20
REVERSE VOLTAGE	Vr	5.0	5.0	5.0	5.0
REVERSE CURRENT	Ir	10	10	10	10
FORWARD VOLTAGE@20mA	Vf	3.5-3.8	2.0-2.5	2.0-2.5	2.0-2.5
LUMINOUS INTENSITY@20mA	Iv	45	20	80	80

■ Physical and electrical information of LED will be provided upon customer's request on switches .

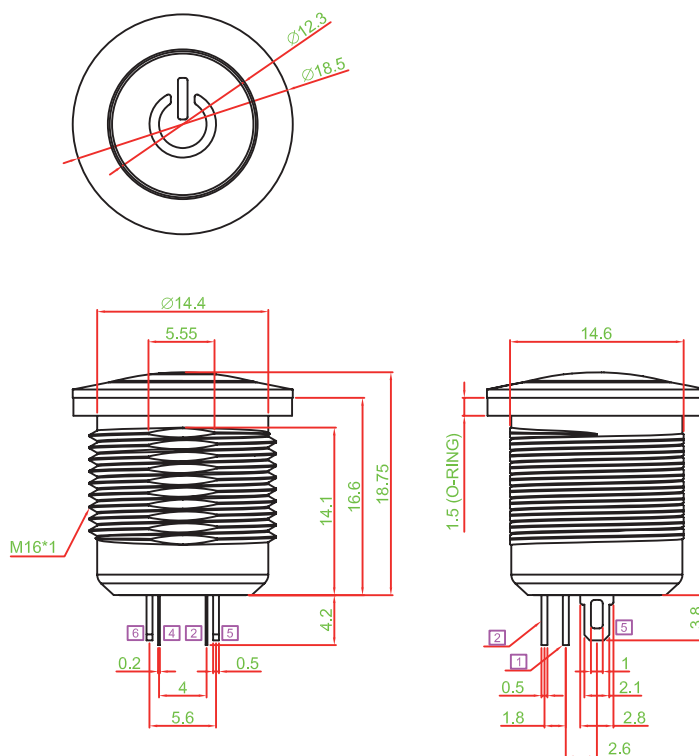
► HOW TO ORDER

PS021	-	N	1	2	A	A	S	S	K3	-	RGB			-	
		OPERATION		POSITION		CAP MATERIAL		CAP COLOR		LED BRIGHTNESS		LED BRIGHTNESS		CABLE & CONNECTOR	
		N	NON-LOCK (std.)	2	2 POSITION (std.)	A	PLASTIC (std.)	WT	WHITE LIGHT (std.)	U	ULTRA (std.)	U	ULTRA (std.)	W200	L=200mm (std.)
		L	LOCK TYPE					S	SILVER	-	FULL COLOR		WHEN RGB		WITHOUT
								K	BLACK	X	WITHOUT	X	WITHOUT		
		POLE		FRAME		HOUSING COLOR		CAP SYMBOL		LED COLOR		LED COLOR			
		1	1 POLE (std.)	A	A POLE (std.)	S	METAL SILVER (std.)	Please refer to appendix 1(knob)		B	BLUE	B	BLUE		
						K	BLACK	For example		G	GREEN	G	GREEN		
								K3	PK3:Printing	R	RED	R	RED		
								E1	OK	W	WHITE	W	WHITE		
										Y	YELLOW	Y	YELLOW		
										X	WITHOUT		WHEN RGB		
										RGB	FULL COLOR	X	WITHOUT		

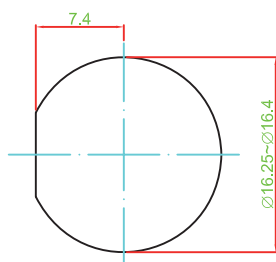


► DIMENSION

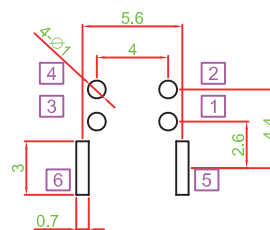
PS021-L12AASSK3-RGB



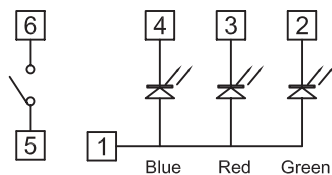
► PANEL CUT OUT



► P.C.B LAYOUT



► SCHEMATIC



► MATERIAL

- HOUSING : ZINC ALLOY
- ACTUATOR : PC
- BASE FRAME : PA + GF
- CAP : PC
- TERMINAL : BRBNZE SILVER PLATING

	0	1	2	3	4	5	6	7	8	9	10	11	12	13	14	15	16	17	18	19
A	0	1	2	3	4	5	6	7	8	9	10	11	12	13	14	15	16	17	18	19
B	A	B	C	D	E	F	G	H	I	J	CH5	CH6	DSK	PIP	C-KEY	CUT	TAKE	REC	ENG	PROD
C	K	L	M	N	O	P	Q	R	S	T	REPLAY	RET1	RET2	KEY ON	AUTO TAKE					
D	U	V	W	X	Y	Z	POWER	ON OFF	ON	OFF		USER A	USER B	USER C	USER D	USER E	USER F	USER G	USER H	USER I
E	OK		Auto	Enter	Start	STOP	OPEN	CLOSE	Exit	Move	USER J									
F	SET	Reset	Light	Alarm	Menu	Next	Back	Delete	Motor	Save										
G	Up	Down	Right	Left	Test	End	Insert	Lock	Print	+/-										
H	ESC	BC	HOME	Health	D-LED 2	OC GENIE	VIDEO INPUT	clr CMOS	Green Power	Save OK										
I	B/R	Undo Cancel	T/L	F1	F2	F3	F4	F5	F6	F7										
J	F8	F9	F10	F11	F12	F13	F14	IN 1	IN 2	IN 3										
K	IN 4	IN 5	IN 6																	
L	+	-	x	÷	=	↑	→	▲	▶	▶										
M																				
N	↑	→	▲	◀	▶	◀	▶	◀	▶	◀										
O																				
P																				
Q	ME3	ME4	BGND 3D DVE1	BGND 3D DVE2	BUS COLOR	ME BUTTON LINK	*	INSERT	WIPE											
R	⏮	ALL		VP		COPY		RECORD MODE	↑											
S			MUTE																	
T																				
U																				
V																				
W	BORE-SIGHT	CANT	LEAD	RANGE	MRS	ZERO	TEST	UD	LR											
X	ID	Disp		GALL		BAND	SETUP	MODE	LINK	FUNC										
Y	SHIFT					DEL														
Z				RUN	2D	3D	CH1	CH2	CH3	CH4										

Mouser Electronics

Authorized Distributor

Click to View Pricing, Inventory, Delivery & Lifecycle Information:

Well Buying:

[PS021-N12AASSK3-RGB](#) [PS021-L12AASSK3-RGB](#)