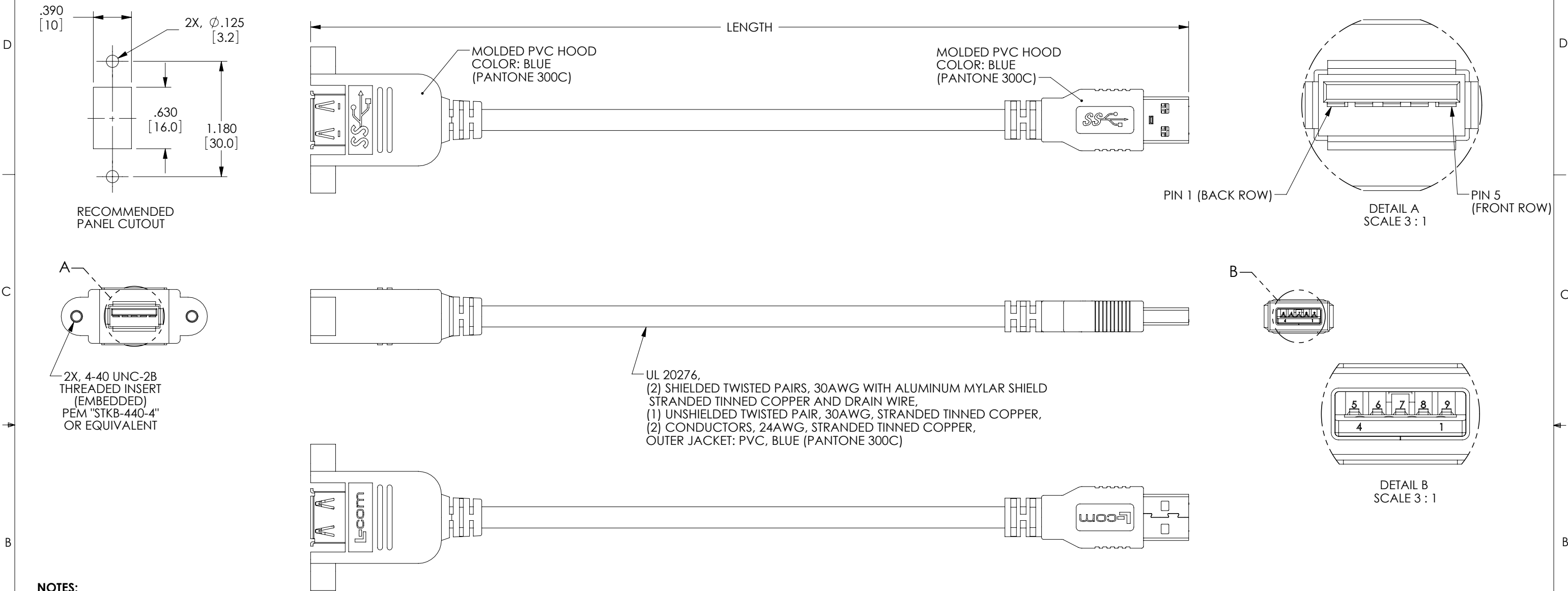


THE INFORMATION CONTAINED IN THIS DRAWING IS THE SOLE PROPERTY OF L-COM, INC. ANY REPRODUCTIONS IN PART OR WHOLE WITHOUT THE WRITTEN PERMISSION OF L-COM, INC. IS PROHIBITED.

REVISIONS			
REV	DESCRIPTION	DATE	CHANGED BY
A	INITIAL RELEASE	2/8/12	D.GRIFFIN
B	ECN5976: CORRECTED JACK ORIENTATION	02/15/12	DFP



NOTES:

MATERIAL:
TYPE "A" JACK:
 PANEL MOUNT HOUSING: PVC
 CONNECTOR PLASTIC: (BLUE) PBT WITH GLASS FIBER
 CONNECTOR CONTACTS: BRASS
 CONNECTOR SHELL: SUS

TYPE "A" PLUG:
CONNECTOR SHELL: SPCC
CONNECTOR PLASTIC: (BLUE) PBT WITH GLASS FIBER,UL94V-0
CONNECTOR CONTACTS: PHOSPHOR BRONZE

FINISH:
CONNECTOR CONTACTS: GOLD, 30μINCHES
CONNECTOR SHELL: NICKEL

ENVIRONMENTAL:
OPERATING TEMPERATURE: -20°C TO +80°C



MISCELLANEOUS:
CABLE ASSEMBLY SHALL BE TESTED FOR CONTINUITY.
CABLE ASSEMBLY SHALL BE INDIVIDUALLY PACKAGED IN
ACCORDANCE WITH L-COM SPEC. PS-0031

WIRING MAP

J1		P1
1	RED	1
2	WHITE	2
3	GREEN	3
4	BLACK	4
5	BLUE	5
6	YELLOW	6
7	DRAIN WIRE	7
8	PURPLE	8
9	ORANGE	9
SHELL	BRAID	SHELL

PART NUMBER	LENGTH	
	METERS	FEET
UPMAA-30-03M	0.3	0.98
UPMAA-30-05M	0.5	1.64
UPMAA-30-1M	1.0	3.28
UPMAA-30-2M	2.0	6.56
UPMAA-30-3M	3.0	9.84

RoHS Compliant ✓

UNLESS OTHERWISE SPECIFIED, DIMENSIONS ARE IN INCHES [mm]		APPROVALS		DATE		 NORTH ANDOVER, MA 01845	
OVERALL CABLE LENGTH TOLERANCE: ≤ 12 [305] = +1 [25] / -0 >12 [305] ≤ 60 [1524] = +2 [51] / -0 >60 [1524] ≤ 120 [3048] = +4 [102] / -0 >120 [3048] ≤ 300 [7620] = +6 [152] / -0 >300 [7620] = +5% / -0%		DRAWN BY D. PARHAM		09/22/2011		CATEGORY USB 3.0	
ALL OTHER DIMENSIONAL TOLERANCES: $.X = \pm .2$ $.XX = \pm .02$ $.XXX = \pm .005$		CHECKED BY D. CASTRO		09/22/2011		PRODUCT DESCRIPTION CA USB 3.0 A PNL/AM	
PROJECTION		CONFIGURATION DETAILS OF UNDIMENSIONED FEATURES MAY VARY		APPROVED BY S. SMITH		09/27/2011	
		COLOR VARIATIONS MAY OCCUR		SIZE B		FSCM NO. 43321	
				DWG. NO. UPMAA-30		REV. B	
				SCALE: 1:1		CAD FILE: UPMAA-30.SLDDRW	
				SHEET 1 OF 1			