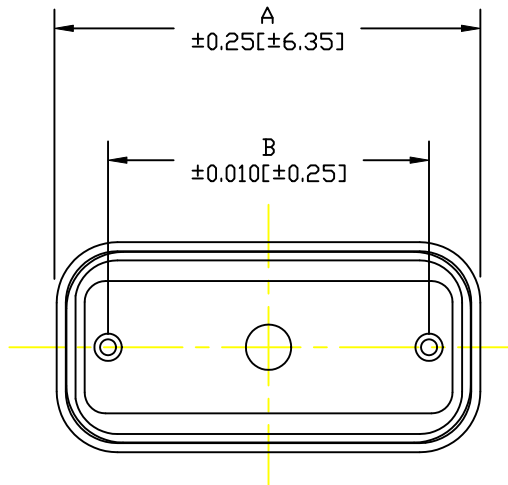


MATERIAL & FINISH:

- BACKSHELL: ABS - UL HB RATED, BLACK COLOR
- BUSHING & BAFFLE: SILICONE
- THUMBSCREWS: BRASS, NICKEL PLATED
- TEMPERATURE: -50°C TO 125°C

POS.	A	B
9	1.653	0.984
	42.0	25.0
15	1.980	1.311
	50.3	33.3
25	2.521	1.852
	64.04	47.05




SERIES _____ 967-YYY-CAP

POSITIONS _____

009 (ALSO FITS 15 POS HIGH DENSITY)
015 (ALSO FITS 26 POS HIGH DENSITY)
025 (ALSO FITS 44 POS HIGH DENSITY)

RoHS COMPLIANT

DO NOT SCALE FROM DRAWING



THESE DRAWINGS AND SPECIFICATIONS ARE THE PROPERTY OF NorComp AND SHALL NOT BE REPRODUCED, COPIED OR USED AS THE BASIS FOR THE MANUFACTURE OF SALE OF APPARATUS WITHOUT WRITTEN PERMISSION.

DRAWN:
P. JENKINS

CHECKED:

SCALE:
2 : 1

DATE:
7-21-11

DATE:

SHEET
1 OF
1

REV
1

NorComp

DWG NO. 967-YYY-CAP