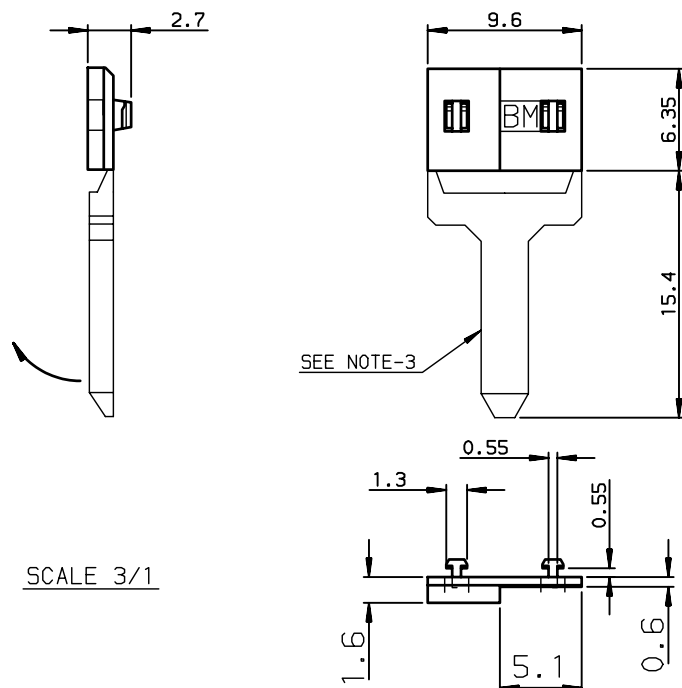


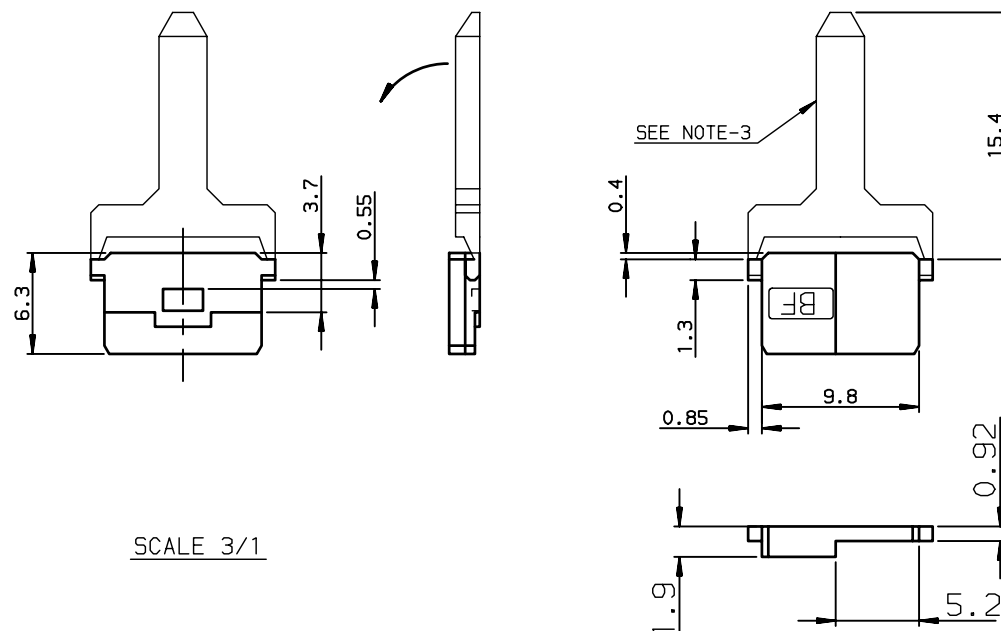
SINGLE KEY - TYPE BM

P/N: HM13008



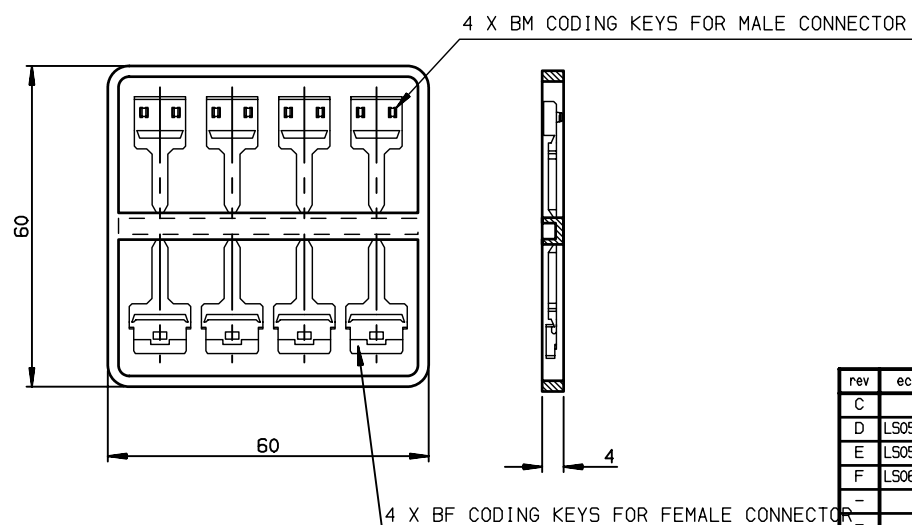
SINGLE KEY - TYPE BF

P/N: HM13004



BF/BM CODING KEY KIT

P/N: HM13047



NOTE-1: MATERIAL = LCP

NOTE-2: SINGLE KEYS ARE DELIVERED IN PLASTIC BAG (QTE = 100)

NOTE-3: HOLDER FOR EASIER MOUNTING IN CONNECTOR HOUSING




NOTE-4: THESE KEYS ARE NOT COMPATIBLE WITH CABLE CONNECTOR LATCH

NOTE-5: EFFECTIVE CODING UP TO 6.50mm MATING LENGTH

NOTE-6: CODING KEYS DIMENSIONS ACCORDING TO IEC-48B(S.296) SPECIFICATION

NOTE-7: KEYS TYPE AF OR AM FORDID CONNECTOR MATING IN ALL CASES

European Views

www.fciconnect.com			surface ISO 1302		tolerance std ISO 406 ISO 1101		projection 		mm 		
			TOLERANCES UNLESS OTHERWISE SPECIFIED								
Dr	ROUILLARD	1994/06/01	ANGULAR	LINEAR	0.X	±0.1	size A3	Scale 1			
Eng	TARON	1994/06/01			0.XX	±0.1					
Chr	LEGARE	1994/06/01			0.XX* ±2*	0.XXX					±0.1
Appr	LEGARE	1994/06/01	Product family				METRAL	Spec ref -			
			HM1-CODING KEYS-BOARD TO BOARD				dwg no	C-8626-0253			Rev. F
			BF/BM TYPE - COLOUR BLUE								
			catalog no -								
							CUSTOMER		sheet 1 of 1		

rev	ecn no	dr	date
C	-	CHA	1995/04/26
D	LS05-0038	JTA	2005/04/22
E	LS05-0064	JTA	2005/09/27
F	LS06-0095	LGO	2006/07/10
-	-	-	-
-	-	-	-
-	-	-	-