

41EN45-6

M

DRAWING NUMBER

ISSUE

36

REVISIONS

A	CO	44351
S	L	B
29	NOV	79
B	CO	47873
Y	S	M
11	AUG	80
C	CO	49806
28	SEPT	81
D	CO	75787-C
11	MAY	84

FO-22851-A

DRAWN

S L B

29 NOV 79

C E B

31 NOV 79

CHECK

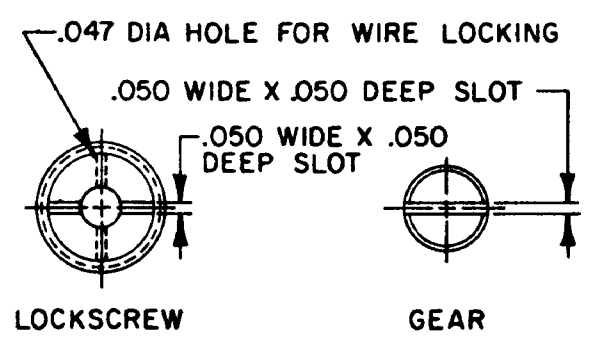
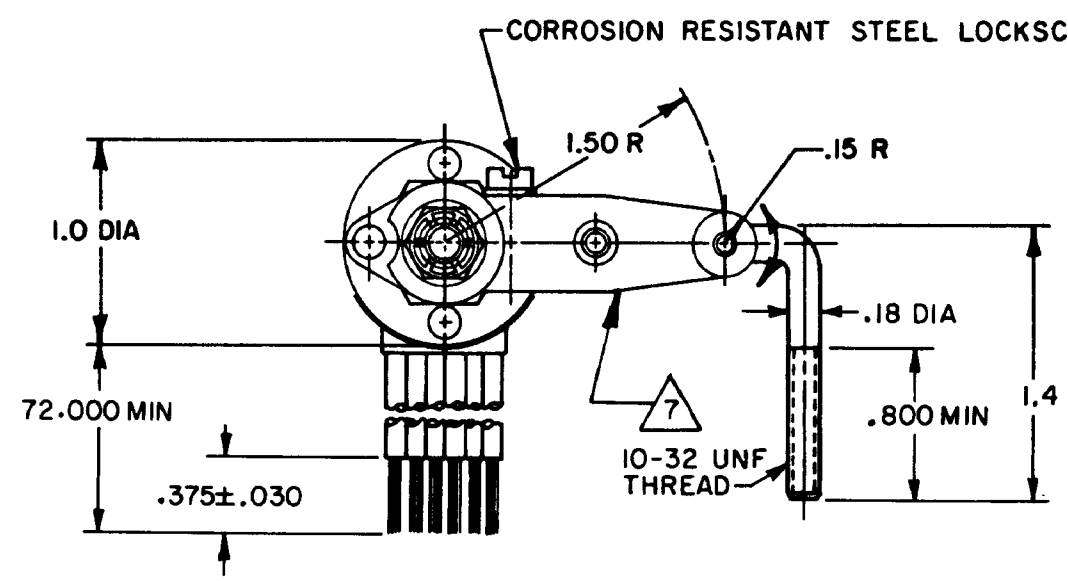
RELEASE NO. PR-5665

REPLACES

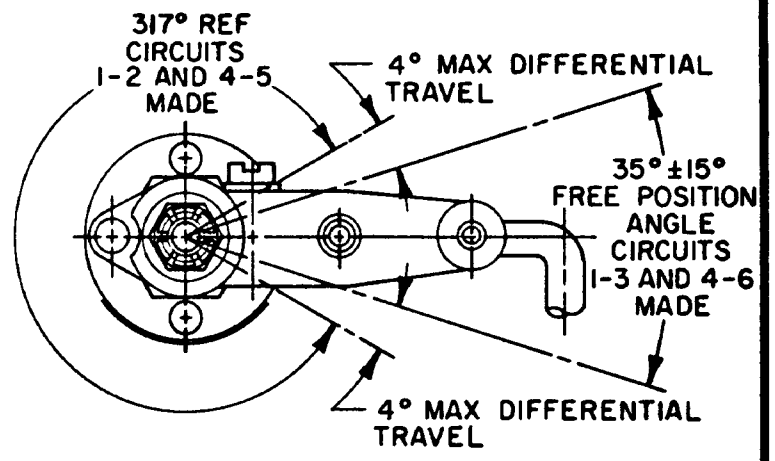
**MICRO SWITCH**  
FREEPORT ILLINOIS U.S.A.  
A DIVISION OF HONEYWELL  
FED MFG CODE 91929

**SWITCH - ENCLOSED**

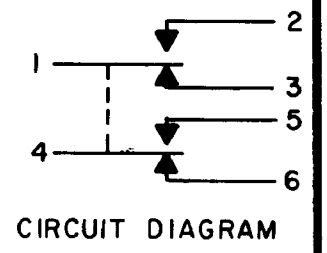
CATALOG LISTING  
**41EN45-6**



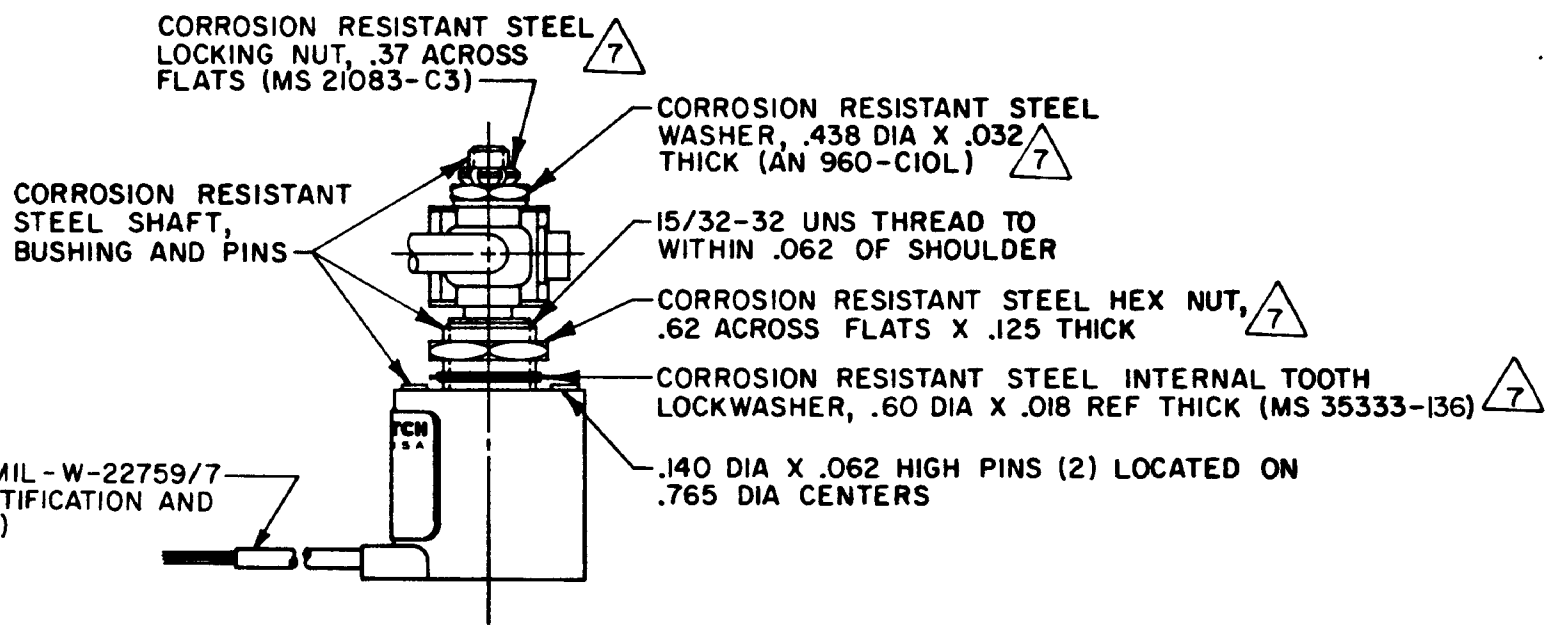
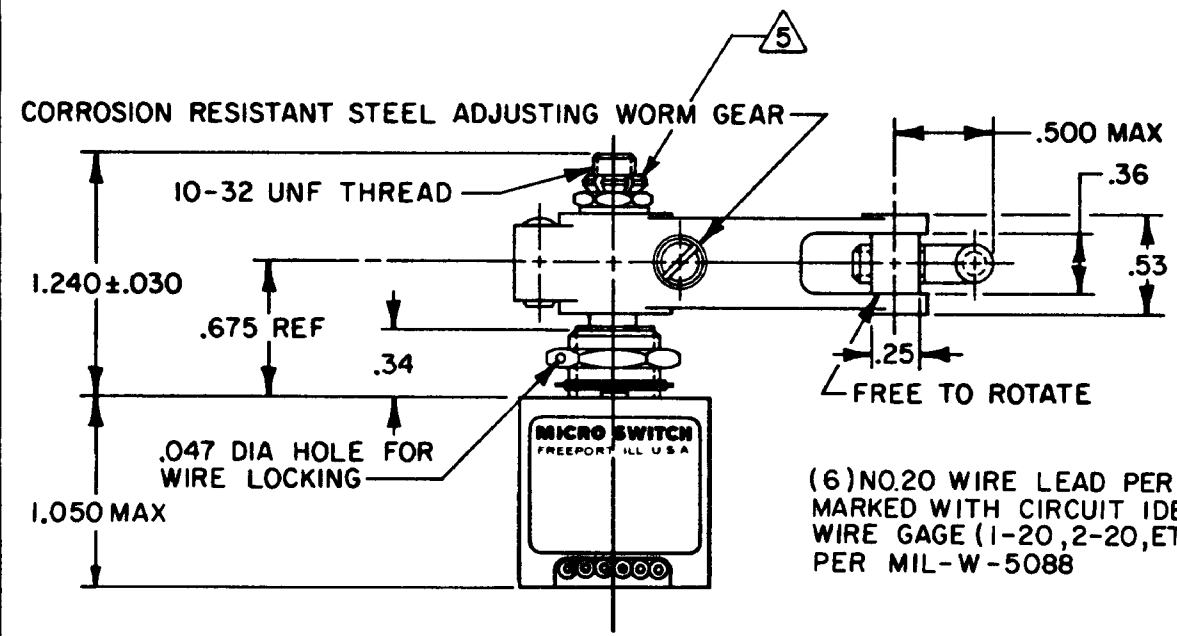
LEVER MAY BE ADJUSTED FOR AN INFINITE NUMBER OF POSITIONS THRU 360° ADJUSTMENT IS MADE BY LOOSENING THE LOCK NUT AND THEN THE LOCKSCREW AND TURNING GEAR UNTIL LEVER IS IN DESIRED POSITION. LOCKSCREW AND LOCK NUT ON SHAFT IS THEN TIGHTENED TO POSITIVELY LOCK LEVER IN POSITION.  
**LEVER ADJUSTMENT DETAIL**  
SCALE 2 TO 1



**CHARACTERISTICS**



CIRCUIT DIAGRAM



(6) NO.20 WIRE LEAD PER MIL-W-22759/7 MARKED WITH CIRCUIT IDENTIFICATION AND WIRE GAGE (1-20, 2-20, ETC) PER MIL-W-5088

THIS DRAWING COVERS A PROPRIETARY ITEM AND IS THE PROPERTY OF MICRO SWITCH, A DIVISION OF HONEYWELL. THIS DRAWING IS NOT TO BE COPIED OR USED WITHOUT THE APPROVAL OF MICRO SWITCH.

THIRD ANGLE PROJECTION

SCALE FULL

DO NOT SCALE PRINT

TOLERANCES				
APPLY TO DESIGN UNITS. CONVERSIONS ARE ONLY FOR REFERENCE. UNLESS NOTED TOLERANCES ARE:				
	DIM. mm	TOL. mm/in	DIM. in	TOL. mm/in
NO PLACES	X	1/64	X	0.01/64
ONE PLACE	X,X	0.01/64	X,X	0.01/64
TWO PLACES	X,X,X	0.01/64	X,X,X	0.01/64
THREE PLACES				
ANGLES				
DESIGN UNITS		US CUSTOMARY		
<input type="checkbox"/>		<input checked="" type="checkbox"/>		
RAW MATERIAL - COMMERCIAL STANDARD				
MICRO SWITCH STANDARDS APPLY				
DIMENSIONS ARE TO BE MET BEFORE PROTECTIVE COATINGS ARE APPLIED				
WEIGHT 8.6 OZ MAX				

CHARACTERISTICS	
OPERATING TORQUE — — — 3 IN LB MAX	
PRETRAVEL	
DIFFERENTIAL TRAVEL	
OVERTRAVEL	
FREE POSITION	
SEE DETAIL	

ELECTRICAL DATA		
CONTACT ARRANGEMENT		
S P D T (2)		
28 VDC		
LOAD	SEA LEVEL	50,000 FT.
RES	4	4
IND	3	1
MOTOR	4	
LAMP	2.4	2.4

- NOTES
- 1 - CORROSION RESISTANT STEEL ENCLOSURE
  - 2 - SWITCH SEALED PER MIL-S-8805 SYMBOL 4
  - 3 - CIRCUIT DIAGRAM AND CAT. LIST. ARE SHOWN ON NAMEPLATE
  - 4 - UNIT PROVIDES NO SHAFT RESTORING FORCE THE ACTUATING DEVICE MUST CONTROL MOVEMENT OF THE SHAFT
  - 5 - DO NOT APPLY MORE THAN 20-25 INCH-POUNDS OF TORQUE WHEN TIGHTENING LOCKING NUT
  - 6 - LEADS PARALLEL WITH CENTERLINE OF MOUNTING PINS WITHIN 5°
  - 7 - HARDWARE MAY BE PACKAGED UNASSEMBLED PER MIL-S-8805

# Mouser Electronics

Authorized Distributor

Click to View Pricing, Inventory, Delivery & Lifecycle Information:

[Honeywell:](#)

[41EN45-6](#)