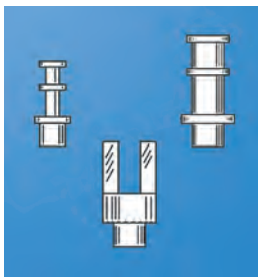


STYLES



- **Single, double and triple turrets**
- **Double-ended** (feed-thru)
- **Split-type** (fork)
- **Tubular** (hollow)
- Swage and thread mounting types available
- Bright Tin plated for extended shelf life and excellent solderability
- Wide variety of sizes to suit space and wire size requirements

SPECIFICATIONS

MATERIAL: Brass - Per ASTM-B16, Bright Electro-Tin per MIL-T-10727 Type 1. Other platings available upon request.

SPECIAL TERMINALS

Custom terminals can be manufactured to your specifications. Complete facilities available to meet your production requirements. Quotations on special terminals furnished promptly upon receipt of sample, sketch or print.

CUSTOM BUILT TERMINAL BOARDS

We are specialists in the assembly of terminals, eyelets, clips and special hardware. Quotations on special terminal boards furnished promptly upon receipt of sample, sketch or print. Assembly service using customer supplied materials also available. (Refer to pages 130-132 for standard terminal boards.)

ORDERING INFORMATION

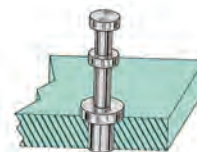
Keystone standardized terminals are available for various board thicknesses.

To specify a terminal, select the "CAT. NO." and "DASHED NUMBER" that corresponds with the board thickness to be used.

DASH NUMBERS (Board Thicknesses)

- 1 for .032 (.81) thick Board
- 2 for .062 (1.57) thick Board
- 3 for .093 (2.36) thick Board
- 4 for .125 (3.2) thick Board

Example: 1503-1 for .032 (.81) thick Board
1503-2 for .062 (1.57) thick Board



STAKING TOOLS

For easy mounting of terminals to insulators and PC boards. Standard and "special order" staking tools are available. Cat. No. "TL" designates a tool consisting of a TOP STAKING PUNCH and a BOTTOM ANVIL. Manufactured from steel with zinc plate. Punch and anvil are precision machined and hardened to insure long life. Refer to page 125.

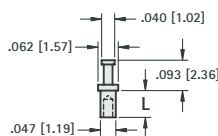
CUSTOM BUILT STAKING TOOLS

Custom prototype and production staking tools can be furnished for Single-End, Double-End, Fork Terminals, Extruded Lugs, Eyelets, Rivets, etc. Contact our Engineering Department for details.



SINGLE, DOUBLE & TRIPLE TURRET

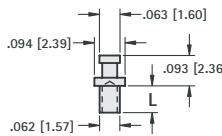
1528



Staking Tool Special Order

CAT. NO.	L
1528-1	.051 (1.30)
1528-2	.082 (2.08)
1528-3	.113 (2.8)
1528-4	.145 (3.6)

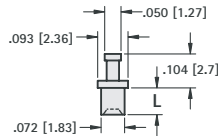
1508



Staking Tool No. TL-1

CAT. NO.	L
1508-1	.053 (1.35)
1508-2	.084 (2.13)
1508-3	.115 (2.9)
1508-4	.147 (3.7)

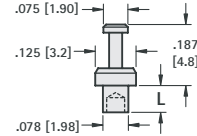
1572



Staking Tool No. TL-1

CAT. NO.	L
1572-1	.051 (1.30)
1572-2	.082 (2.08)
1572-3	.113 (2.8)
1572-4	.145 (3.6)

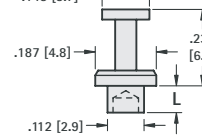
1520



Staking Tool No. TL-2

CAT. NO.	L
1520-1	.078 (1.98)
1520-2	.109 (2.8)
1520-3	.141 (3.5)
1520-4	.172 (4.4)

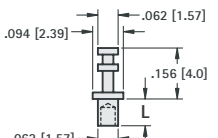
1532



Staking Tool No. TL-8

CAT. NO.	L
1532-1	.078 (1.98)
1532-2	.109 (2.8)
1532-3	.141 (3.5)
1532-4	.172 (4.4)

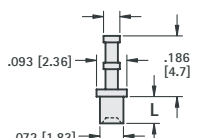
1593



Staking Tool No. TL-1

CAT. NO.	L
1593-1	.054 (1.37)
1593-2	.084 (2.13)
1593-3	.115 (2.9)
1593-4	.147 (3.7)

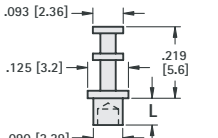
1573



Staking Tool No. TL-1

CAT. NO.	L
1573-1	.051 (1.30)
1573-2	.082 (2.08)
1573-3	.113 (2.8)
1573-4	.145 (3.6)

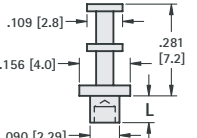
1502



Staking Tool No. TL-2

CAT. NO.	L
1502-1	.078 (1.98)
1502-2	.109 (2.8)
1502-3	.141 (3.5)
1502-4	.172 (4.4)

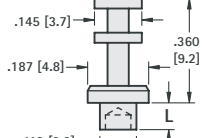
1514



Staking Tool No. TL-5

CAT. NO.	L
1514-1	.078 (1.98)
1514-2	.109 (2.8)
1514-3	.141 (3.5)
1514-4	.172 (4.4)

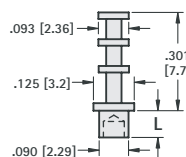
1503



Staking Tool No. TL-8

CAT. NO.	L
1503-1	.078 (1.98)
1503-2	.109 (2.8)
1503-3	.141 (3.5)
1503-4	.172 (4.4)

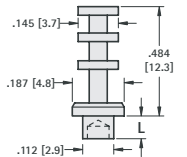
1598



Staking Tool No. TL-2

CAT. NO.	L
1598-1	.062 (1.57)
1598-2	.094 (2.39)
1598-3	.125 (3.2)
1598-4	.156 (3.9)

1527

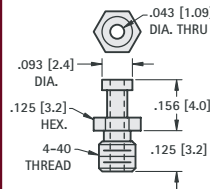


Staking Tool No. TL-8

CAT. NO.	L
1527-1	.078 (1.98)
1527-2	.109 (2.8)
1527-3	.141 (3.5)
1527-4	.172 (4.4)

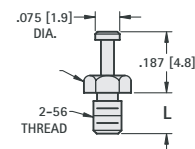
THREADED TURRETS

1563



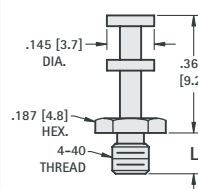
CAT. NO. 1563

1595



CAT. NO.	L
1595-1	.093 (2.36)
1595-2	.125 (3.2)
1595-3	.188 (4.8)

1587



CAT. NO.	L
1587-1	.125 (3.2)
1587-2	.188 (4.8)

Mouser Electronics

Authorized Distributor

Click to View Pricing, Inventory, Delivery & Lifecycle Information:

[Keystone Electronics:](#)

[1528-TL](#)