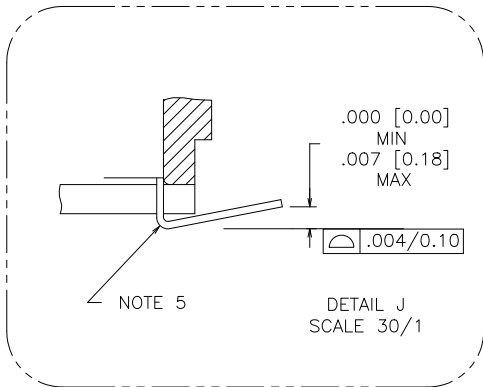
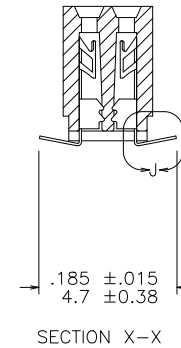
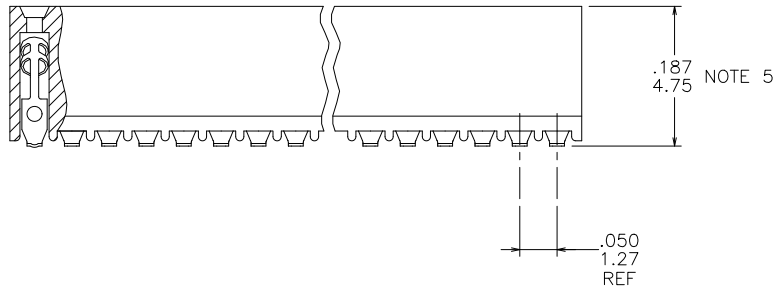
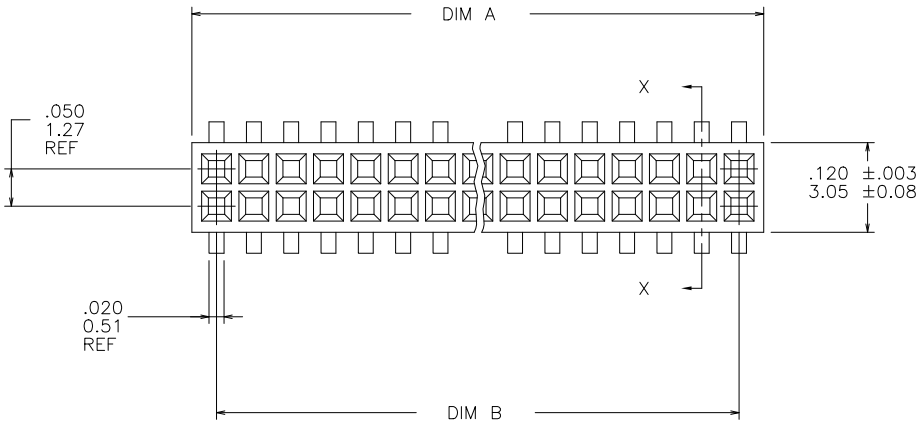




FCIconnect.com

Copyright FCI

PRODUCT NUMBER
SEE TABLE



mat'l. code				surface		tolerance		projection		product family					
-				ISO 1302 ✓		ISO 406 ISO 1101				RIBCAGE					
ltr	ecn no	dr	date	tolerances unless otherwise specified						title					
S	V10994	DLW	3/9/01	angles linear		.XX±.01/0.3						INCH/MM			
T	V11674	CRG	6/22/01			.XXX±.005/0.13									
U	M05-0088	MHT	5/12/05			0°±2°		.XXX±.0020/0.051							
V	M06-0225	ERE	6/12/06	dr	M. CLOUSER	6/26/91				dwg no		sheet 1 of 3		size	
W	M06-0370	MHT	9/26/06	engr	D. WHITING	6/26/91				87021		A3			
X	M09-0058	CMR	4/06/09	chr	C. GINGRICH	6/26/91				type Product Customer Drawing					
Y	ELX-N-010020	YO	1/30/12	appd	D. WHITING	6/26/91									
sheet index		revision sheet		Y	Y	Y									
				1	2	3									

PDS: Rev :Y

STATUS: Released

Printed: Sep 11, 2013

PRODUCT NO. NOTE 8	SIZE	DIM A	DIM B	SPECIAL PACKAGING	TAPE WIDTH PITCH	PIECES PER REEL
87021-605	2 X 5	.266/6.756	.200/5.08	NOTE 6	24MM 12MM	750
-610	2 X 10	.516/13.106	.450/11.43	NOTE 6	24MM 12MM	750
-615	2 X 15	.766/19.456	.700/17.78	NOTE 6	44MM 12MM	500
-620	2 X 20	1.016/25.806	.950/24.13	NOTE 6	44MM 12MM	500
-625	2 X 25	1.266/32.156	1.200/30.48	NOTE 6	44MM 12MM	500
-630	2 X 30	1.516/38.506	1.450/36.83	NO		---
-635	2 X 35	1.766/44.856	1.700/43.18	NO		---
-640	2 X 40	2.016/51.206	1.950/49.53	NO		---
-645	2 X 45	2.266/57.556	2.200/55.88	NO		---
87021-650	2 X 50	2.516/63.906	2.450/62.23	NO		---

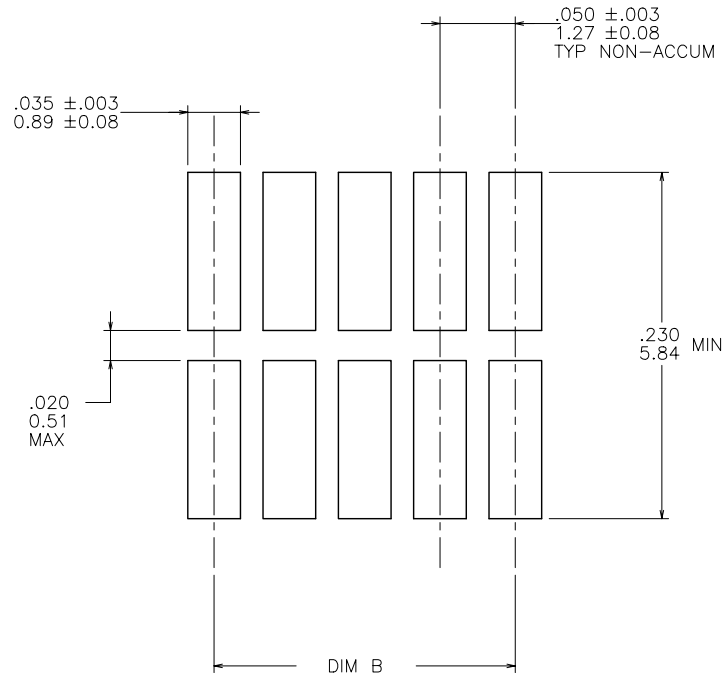


FIGURE "A"
RECOMMENDED PCB
MOUNTING PAD PATTERN

NOTES :

- HOUSING MATERIAL :
GLASS FILLED THERMOPLASTIC FLAME RETARDANT PER UL94V-0.
COLOR : NATURAL
- TERMINAL MATERIAL : BeCu
- TERMINAL PLATING :
30u"/.76u MIN HARD GOLD OR GXT OVER Ni ON CONTACT ZONES.
100u"/2.54u MIN Sn OVER Ni IN SOLDERING ZONES.
OTHERWISE GOLD FLASH OR UNPLATED.
- APPLICATION INFORMATION :
A. RECOMMENDED MOUNTING PAD PATTERN IS
SHOWN IN FIGURE "A".
B. MATING PINS TO BE .0176/0.447 TO .0181/0.459 DIA.
C. MATING PIN TIPS TO BE IN TRUE POSITION TO MATING
GRID WITHIN .008/0.20 DIA.
D. SUGGESTED MATING PIN LENGTH .130/3.30 ±.010/0.25.
- LEAD TIPS TO BE ABOVE HEEL, UP TO .007/0.18 MAX.
COPLANARITY TO BE MEASURED AT LOWEST POINT (HEEL).
- ADD "TR" TO END OF DASH NUMBER FOR TAPE AND REEL
PACKAGE WITH CAP. TOOLED ONLY FOR NOTED CONNECTORS.
- ADD "CT" TO END OF DASH NUMBER FOR CONNECTOR WITH
VACUUM CAP IN TUBE.
- ADD "LF" SUFFIX AT THE END OF PART NUMBER FOR LEAD FREE OPTION.
- THE HOUSING WILL WITHSTAND EXPOSURE TO 260°C PEAK TEMPERATURE
FOR 20 SECONDS IN A CONVECTION, INFRA-RED OR VAPOR PHASE REFLOW
OVEN. SEE APPLICATION NOTE/PROCEDURES IF THEY ARE AVAILABLE.
- THIS PRODUCT MEETS EUROPEAN UNION DIRECTIVES AND OTHER
COUNTRY REGULATION AS DESCRIBED IN GS-22-008.
- PRODUCT SPEC PER BUS-12-087.

mat'l. code		surface		tolerance		projection		product family	
-		ISO 1302 ✓		ISO 406 ISO 1101		ISO 1101		RIBCAGE	
ltr	ecn	no	dr	date	tolerances unless otherwise specified			title	
Y					angles	linear	INCH/MM		.050/1.27 CC VERT CARD
							scale 4:1		CONN. ASSY. SURFACE MOUNT
					dr	M. CLOUSER	6/26/91	dwg no	
					enr	D. WHITING	6/26/91	sheet 2 of 3	
					chr	C. GINGRICH	6/26/91	size	
					appd	D. WHITING	6/26/91	A3	
sheet		revision						type	
index		sheet						Product Customer Drawing	

1

2 3

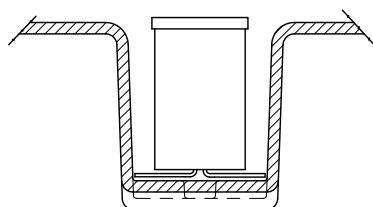
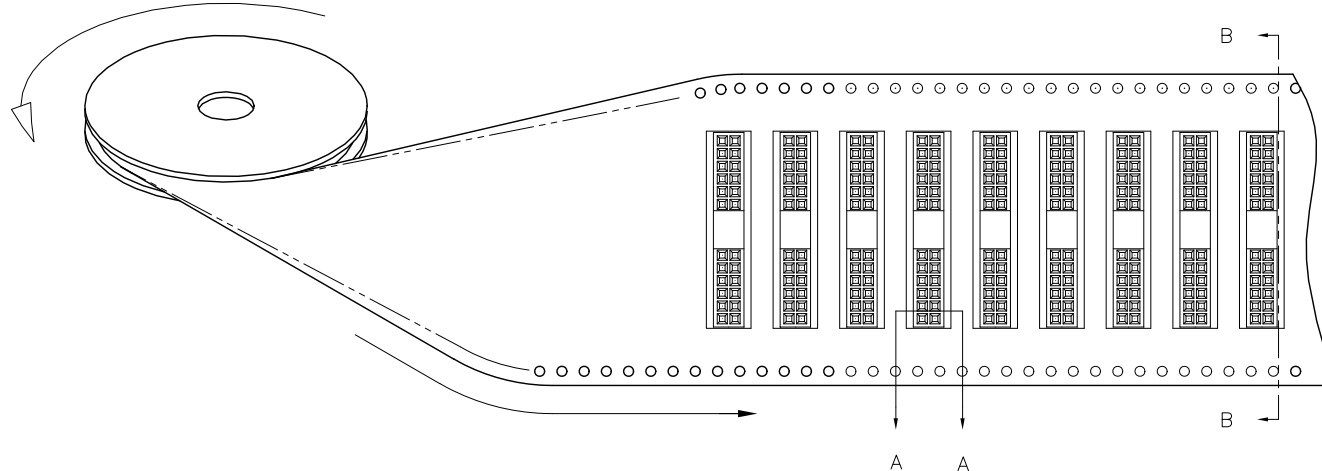
4

5

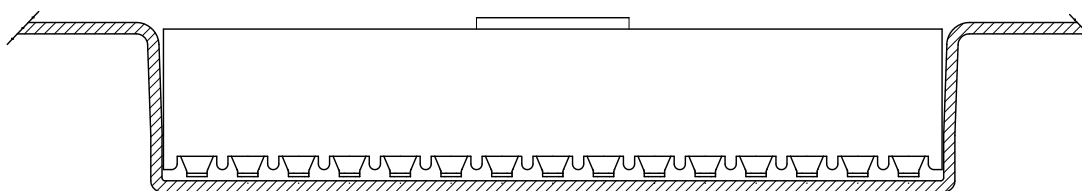
6

REFERENCE ONLY

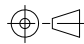
TAPE WIDTH'S 32mm AND ABOVE HAS BOTH FEED TRACKS,
BELOW 32mm HAS TOP FEED TRACK ONLY.

UNREELING
DIRECTION

SECTION A-A



SECTION B-B

mat'l. code —				surface ISO 1302 ✓		tolerance ISO 406 ISO 1101		projection 		product family RIBCAGE							
ltr		ecn no		dr		date		tolerances unless otherwise specified				title .050/1.27 CC VERT CARD CONN. ASSY. SURFACE MOUNT					
Y								angles		linear				.XX±.01/0.3			
														.XXX±.005/0.13			
								0°±2'						.XXXX±.0020/0.051			
								dr		M. CLOUSER		6/26/91		dwg no 87021		sheet 3 of 3 size A3	
								engr		D. WHITING		6/26/91					
								chr		C. GINGRICH		6/26/91					
								appd		D. WHITING		6/26/91					
sheet index		revision sheet														type Product Customer Drawing	

PDS: Rev :Y

STATUS: Released

Printed: Sep 11, 2013

Mouser Electronics

Authorized Distributor

Click to View Pricing, Inventory, Delivery & Lifecycle Information:

FCI:

[87021-610LF](#)