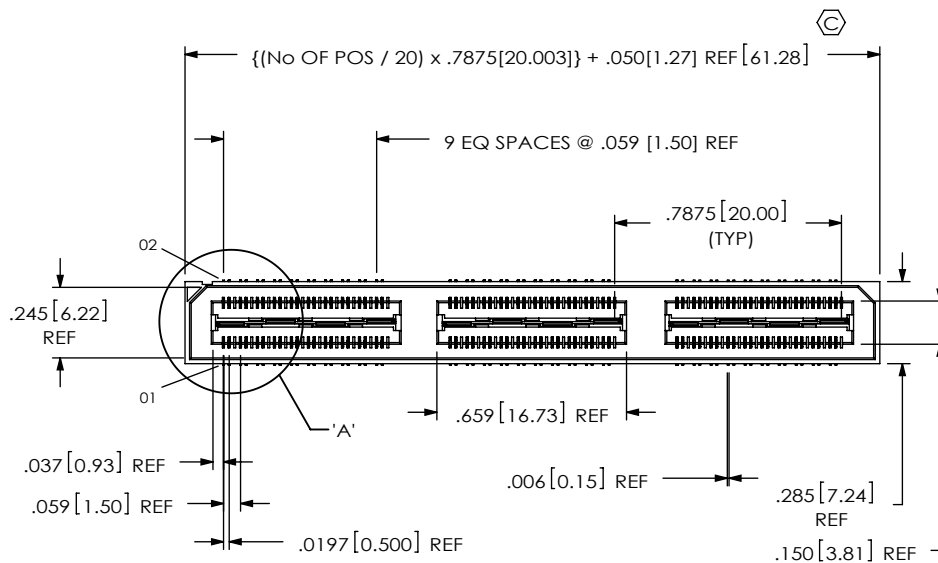


DO NOT
SCALE FROM
THIS PRINT

QSH-XXX-XX-X-D-DP-XXX	
No. OF POSITIONS	OPTION
-020, -040, -060, **-080, **-100 (PER ROW)	-A: ALIGNMENT PINS (USE QSH-30-01-D-XX-A, SEE FIG 2)
LEAD STYLE	-GP: GUIDE POSTS (USE QSH-30-01-D-XX-GP, SEE FIG 4)
-01: .1280 [3.251]	-LC: LOCKING CLIPS (SEE NOTE 12) (USE LC-08-TM-01, SEE FIG 1)
PLATING SPECIFICATION	-K: POLYIMIDE FILM PAD (USE K-DOT-.325-.450-.005, SEE FIG. 3)
(SEE NOTE 11)	-TR: TAPE & REEL (60 POS MAX)
-F: 3u" FLASH SELECTIVE IN CONTACT AREA, MATTE TIN ON TAIL (USE T-1G2-01-F) (SEE NOTE 9)	-TY: TRAY PACKAGING (NOT AVAILABLE WITH -TR)
-L: 10u" LIGHT SELECTIVE GOLD IN CONTACT AREA, MATTE TIN ON TAIL (USE T-1G2-01-L) (SEE NOTE 9)	-FL: FRICTION LOCKS (SEE FIG 5, SHEET 3) (NOT AVAILABLE WITH -GP)
-H: 30u" HEAVY GOLD IN CONTACT AREA, 3u" GOLD ON TAIL (USE T-1G2-01-G)	-RT1: RETENTION (MUST USE -A OPTION) (USE QSH-30-01-D-XX-A-RT1 & SUB-SC-05-01-FF) (SEE FIG 6, SHEET 3)
-C: 50u" ELECTRO-POLISHED SELECTIVE GOLD IN CONTACT AREA, MATTE TIN ON TAIL (USE T-1G2-01-L) (SEE NOTE 9)	(NOT AVAILABLE WITH -LC, -GP, OR -FL) (NOT AVAILABLE WITH -080 & -100 POS)
	-L: LATCHING (SEE FIG 7, SHEET 4) (USE QSH-30-01-D-XX-A-L) (NOT AVAILABLE WITH -LC, -GP, -FL, OR -RT1)
	DIFFERENTIAL PAIRS
	ROW SPECIFICATION
	-D: DOUBLE (USE QSH-30-01-D-XX)
	No OF BANKS

**C-126-01-X CAN BE SUBBED
FOR C-126-21-X
** = SEE NOTE 10**

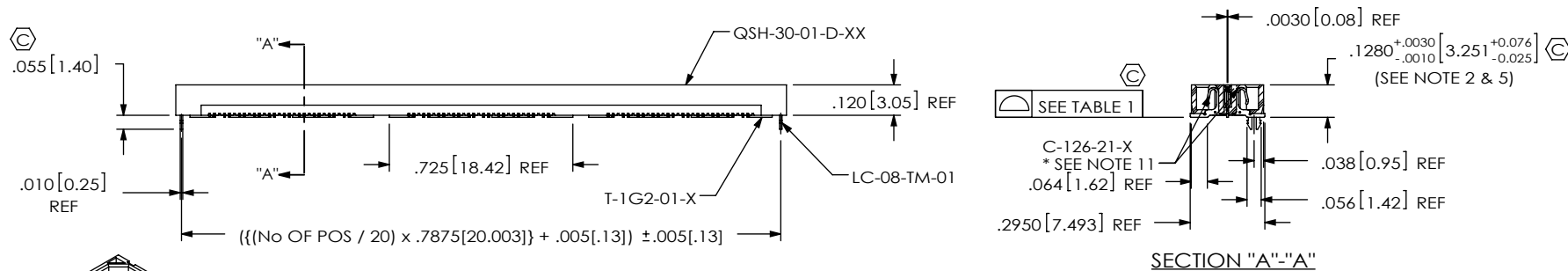


FIG 1
-LC: LOCKING CLIP OPTION SHOWN

TABLE 1	
No of POS	COPLANARITY (INCLUDES GROUND PLANE)
-020 THRU -060	.0040 [1.02]
-080 THRU -100	.0060 [1.52]

NOTES:

1. \odot REPRESENTS A CRITICAL DIMENSION.
2. MAX VARIANCE: .002 [0.05]
3. MAX BURR ALLOWANCE: .0015 [0.038]
4. MINIMUM PUSHOUT FORCE: 4 OZ
5. DIM APPLIES TO GROUND PLANE AND CONTACT.
6. MINIMUM GROUND PLANE RETENTION: 8 OZ
7. -L PLATING CAN BE SUBSTITUTED FOR -F PLATING.
8. SUB-SC-05-01-XX RETENTION TO BE 1.0 LBF IN BODY.
9. MAY SUB C-126-01-X FOR C-126-21-X.
10. FOR NEW APPLICATIONS REQUIRING THESE POSITIONS PLEASE CONTACT SAMTEC INTERCONNECT PROCESSING GROUP.
11. FOR -80, -100 POSITIONS USE C-269-11-X. DO NOT SUB C-126.
12. DUE TO THE HIGH AMOUNT OF INSERTION FORCE NEEDED, THE -LC OPTION IS NOT COMPATIBLE WITH AUTO PLACEMENT. SAMTEC RECOMMENDS MANUAL PLACEMENT FOR ALL ASSEMBLIES WITH THE -LC OPTION."

UNLESS OTHERWISE SPECIFIED,
DIMENSIONS ARE IN INCHES.
TOLERANCES ARE:
DECIMALS ANGLES
.XX: $\pm .01$ [3]
.XXX: $\pm .005$ [13]
.XXXX: $\pm .0020$ [051]

PROPRIETARY NOTE

THIS DOCUMENT CONTAINS INFORMATION
CONFIDENTIAL AND PROPRIETARY TO
SAMTEC, INC. AND SHALL NOT BE REPRODUCED
OR TRANSFERRED TO OTHER DOCUMENTS OR
DISCLOSED TO OTHERS OR USED FOR ANY
PURPOSE OTHER THAN THAT WHICH IT WAS
OBTAINED WITHOUT THE EXPRESSED WRITTEN
CONSENT OF SAMTEC, INC.

samtec

520 PARK EAST BLVD, NEW ALBANY, IN 47150
PHONE: 812-944-6733 FAX: 812-948-5047
e-Mail: info@SAMTEC.com code 55322

MATERIAL: DO NOT SCALE DRAWING SHEET SCALE: 3:2
INSULATOR: BLACK, LCP
FLAMMABILITY RATING: UL94V0
TERMINAL: PHOS BRONZE
GROUND PLANE: PHOS BRONZE

DESCRIPTION:
.5mm DIFFERENTIAL PAIRS HS SOCKET ASSEMBLY

DWG. NO.
QSH-XXX-XX-X-D-DP-XXX

BY: KEVIN B 06/13/00 **SHEET 1 OF 4**

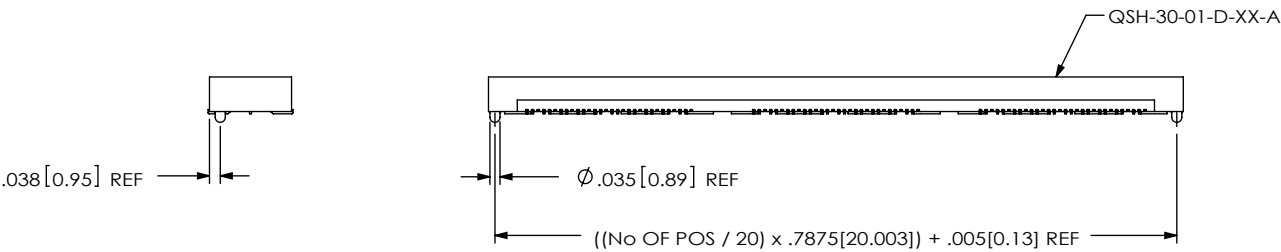


FIG 2
-A: ALIGNMENT PIN OPTION SHOWN

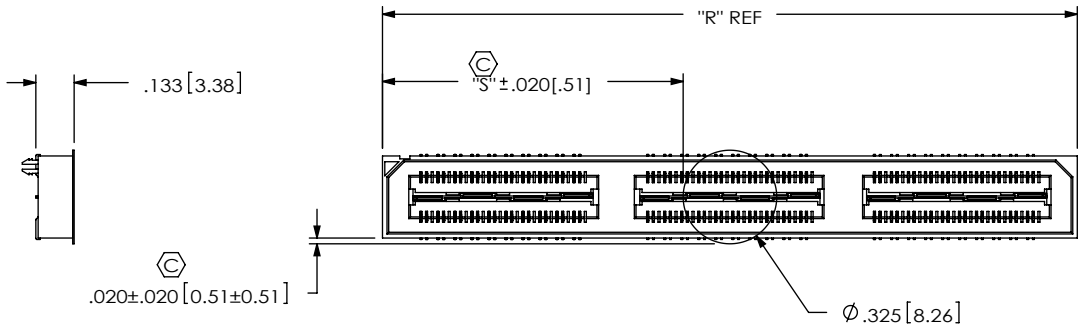
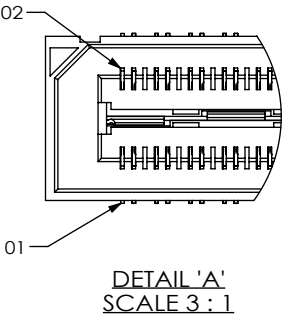


FIG 3
-K: POLYIMIDE FILM PAD

NOTE: "R" = $((\text{No OF POSITIONS} / 20) \times .7875 [20.003]) + .050 [1.27]$
"S" = $((\text{"R"} - .325 [8.26]) / 2) \pm .020 [0.51]$

PROPRIETARY NOTE
THIS DOCUMENT CONTAINS INFORMATION
CONFIDENTIAL AND PROPRIETARY TO
SAMTEC, INC. AND SHALL NOT BE REPRODUCED
OR TRANSFERRED TO OTHER DOCUMENTS OR
DISCLOSED TO OTHERS OR USED FOR ANY
PURPOSE OTHER THAN THAT WHICH IT WAS
OBTAINED WITHOUT THE EXPRESSED WRITTEN
CONSENT OF SAMTEC, INC.

DO NOT SCALE DRAWING

SHEET SCALE: 1.5:1

samtec

520 PARK EAST BLVD, NEW ALBANY, IN 47150
PHONE: 812-944-6733 FAX: 812-948-5047
e-Mail: info@SAMTEC.com code 55322

DESCRIPTION:
.5mm DIFFERENTIAL PAIRS HS SOCKET ASSEMBLY

DWG. NO.
QSH-XXX-XX-X-D-DP-XXX

BY: KEVIN B 06/13/00 SHEET 2 OF 4

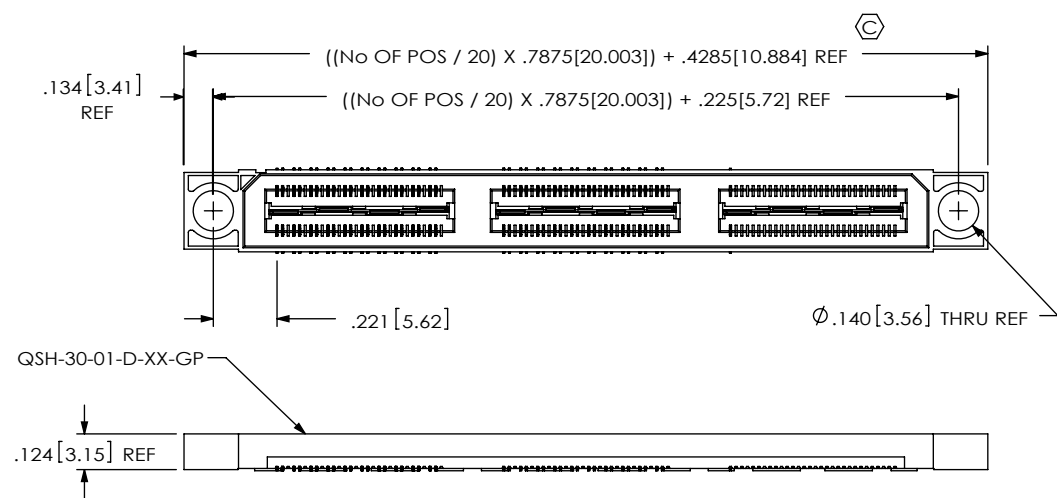
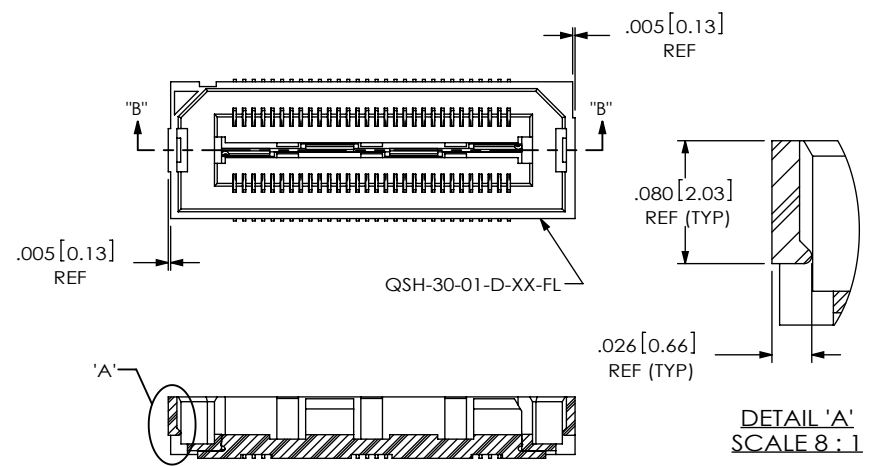
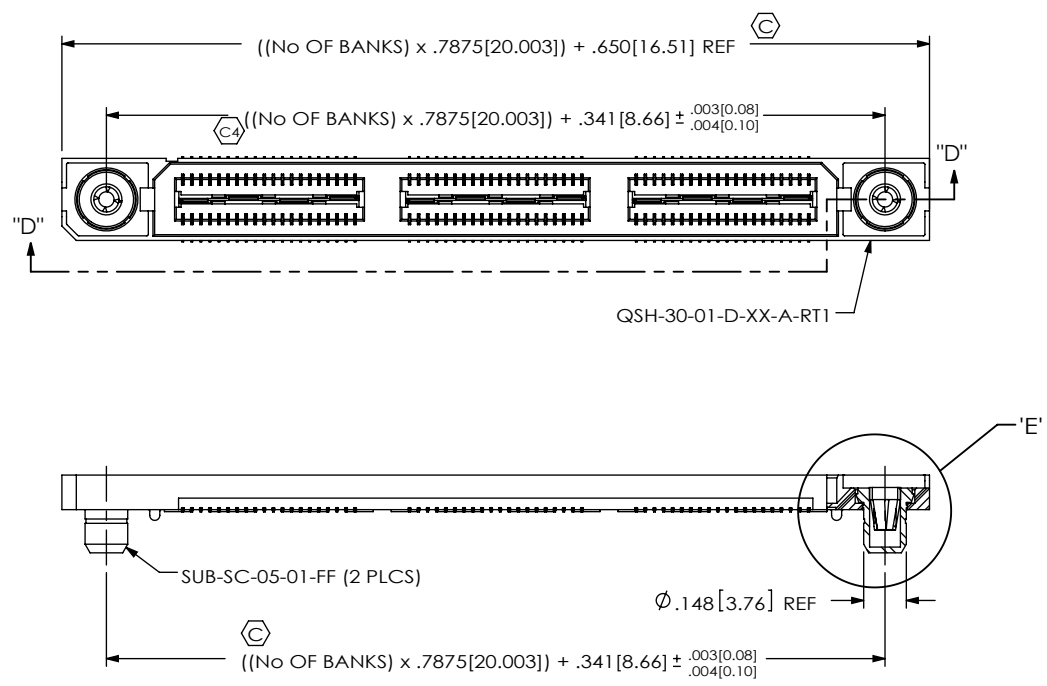


FIG 4
-GP: GUIDE POST OPTION SHOWN

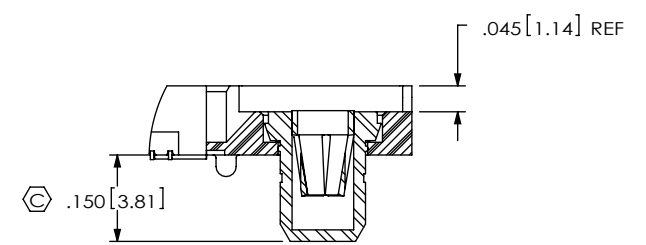


SECTION "B"-"B"
FIG 5
-FL: FRICTION LOCKS
(NOT AVAILABLE WITH -GP OPTION)
(SAME AS FIG 1, UNLESS OTHERWISE STATED)



SECTION "D"-"D"
SCALE 1.5 : 1

FIG 6
-RT1: RETENTION OPTION
(MUST USE -A OPTION)
(NOT AVAILABLE WITH -LC, -GP, OR -FL OPTIONS)
(NOT AVAILABLE WITH -080 & -100 POS)
(SAME AS FIG 1, UNLESS OTHERWISE STATED)



DETAIL 'E'
SCALE 3 : 1

PROPRIETARY NOTE THIS DOCUMENT CONTAINS INFORMATION CONFIDENTIAL AND PROPRIETARY TO SAMTEC, INC. AND SHALL NOT BE REPRODUCED OR TRANSFERRED TO OTHER DOCUMENTS OR DISCLOSED TO OTHERS OR USED FOR ANY PURPOSE OTHER THAN THAT WHICH IT WAS OBTAINED WITHOUT THE EXPRESSED WRITTEN CONSENT OF SAMTEC, INC.		samtec 520 PARK EAST BLVD, NEW ALBANY, IN 47150 PHONE: 812-944-6733 FAX: 812-948-5047 e-Mail: info@SAMTEC.com code 55322	
DO NOT SCALE DRAWING		DESCRIPTION: .5mm DIFFERENTIAL PAIRS HS SOCKET ASSEMBLY	
SHEET SCALE: 1.25:1		DWG. NO. QSH-XXX-XX-X-D-DP-XXX	
		BY: KEVIN B 06/13/00	SHEET 3 OF 4

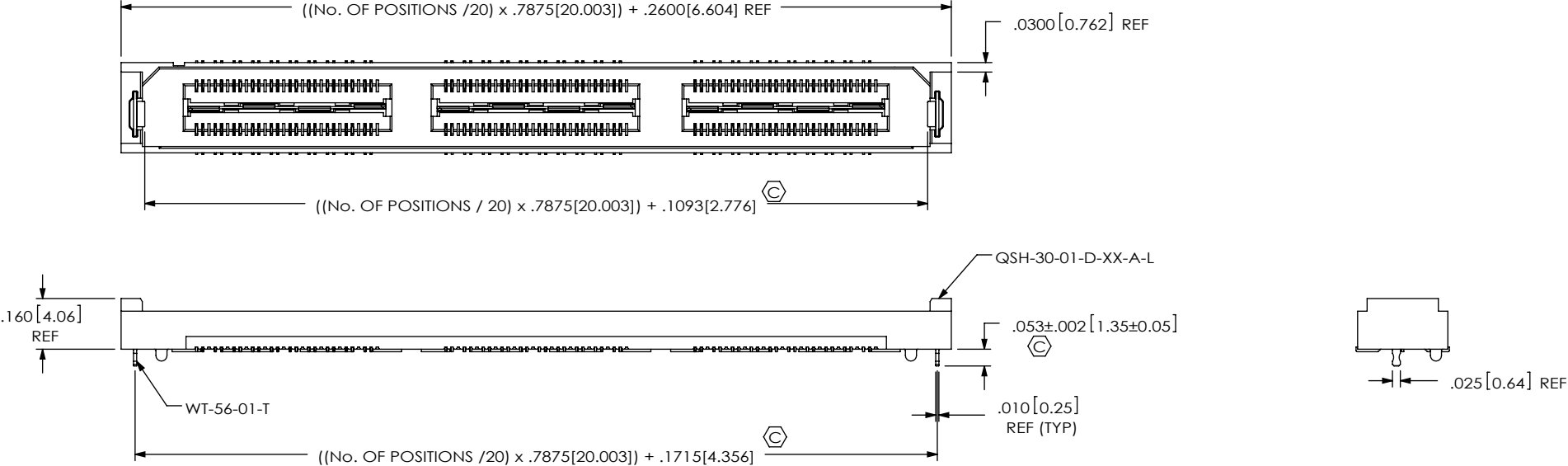


FIG 7
-L: RETENTION OPTION
(NOT AVAILABLE WITH -LC, -GP, -FL, OR -RT1 OPTIONS)
(SAME AS FIG 1, UNLESS OTHERWISE STATED)

<p><u>PROPRIETARY NOTE</u></p> <p>THIS DOCUMENT CONTAINS INFORMATION CONFIDENTIAL AND PROPRIETARY TO SAMTEC, INC. AND SHALL NOT BE REPRODUCED OR TRANSFERRED TO OTHER DOCUMENTS OR DISCLOSED TO OTHERS OR USED FOR ANY PURPOSE OTHER THAN THAT WHICH IT WAS OBTAINED WITHOUT THE EXPRESSED WRITTEN CONSENT OF SAMTEC, INC.</p> <p>DO NOT SCALE DRAWING</p> <p>SHEET SCALE: 2:1</p>	 <p>520 PARK EAST BLVD, NEW ALBANY, IN 47150 PHONE: 812-944-6733 FAX: 812-948-5047 e-Mail info@SAMTEC.com code 55322</p>	
	DESCRIPTION: .5mm DIFFERENTIAL PAIRS HS SOCKET ASSEMBLY	
	DWG. NO. QSH-XXX-XX-X-D-DP-XXX	
	BY: KEVIN B	06/13/00