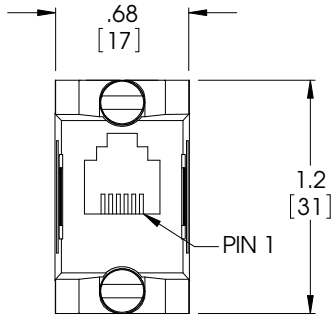
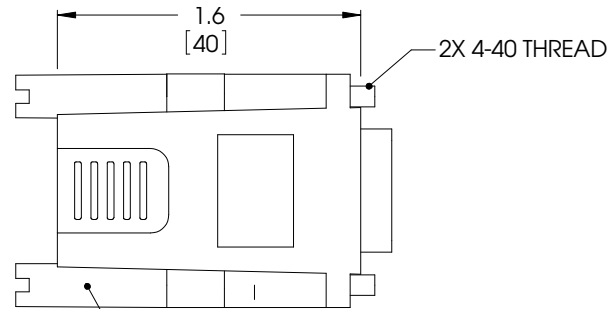


THE INFORMATION CONTAINED IN THIS DRAWING IS THE SOLE PROPERTY OF L-COM, INC. ANY REPRODUCTION IN PART OR WHOLE WITHOUT THE WRITTEN PERMISSION OF L-COM, INC. IS PROHIBITED.

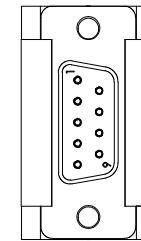
REVISIONS			
REV	DESCRIPTION	DATE	APPROVED
B	CORRECTED PIN NO. CALL-OUTS (ECN1215)	9/17/02	D. PARHAM
C	ECN1509: ADDED PRODUCT VALIDATION	9/19/03	D. PARHAM
D	ECN1879: UPDATED DIMENSIONS. 1.2 WAS 1.21. 1.6 WAS 1.58.	10/8/04	D. PARHAM
E	ECN99999: ADDED ROHS STAMP. UPDATED FORMAT.	04/18/08	D. PARHAM



RJ12 JACK  
(6 X 6)



KNURLED PLASTIC



FEMALE 9-POSITION  
CRIMP & POKE  
D-SUB CONNECTOR

WIRING TABLE	
RJ12	LEAD COLOR
1	WHITE OR GRAY
2	BLACK
3	RED
4	GREEN
5	YELLOW
6	BLUE

SPECIFICATIONS  
MOLDED PARTS ARE UL94V-0 RATED

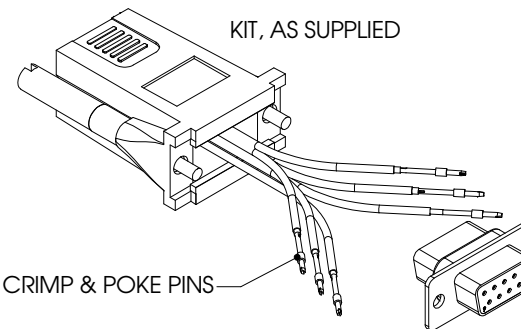
MATERIAL:  
HOUSING: MOLDED ABS  
COLOR: DARK GRAY

D-SUB  
INSULATOR: UL94V-0 THERMOPLASTIC  
CONTACTS: GOLD PLATED  
SHELL: TIN FINISH

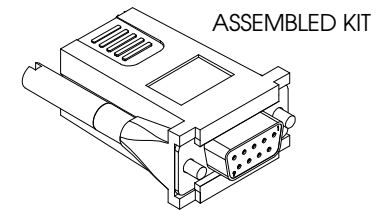
RJ12  
CONTACTS: GOLD PLATED, 50 μINCHES

NOTES:

- ADAPTOR KIT PROGRAMMED AS NEEDED BY INSERTING AND SEATING EACH PIN INTO DESIRED POSITION IN D-SUB CONNECTOR.



6X FEMALE CRIMP & POKE PINS



**RoHS Compliant** ✓

UNLESS OTHERWISE SPECIFIED, DIMENSIONS ARE IN INCHES (mm)  OVERALL CABLE LENGTH TOLERANCE: ≤12 (305) = +1 (25) / -0 >12 (305) ≤60 (1524) = +2(51) / -0 >60 (1524) ≤120 (3048) = +4 / -0 >120 (3048) ≤300 (7620) = +6 / -0 >300 (7620) = +5% / -0%  ALL OTHER DIMENSIONAL TOLERANCES: .X = .3 .XX = .15  PROJECTION 	APPROVALS	DATE	 45 BEECHWOOD DRIVE NORTH ANDOVER, MA 01845	
	DRAWN BY D PARHAM	4/11/2001		
	CHECKED BY T CLARK	5/17/2001	CATEGORY MODULAR	
	APPROVED BY R CARRICK	5/24/2001	PRODUCT DESCRIPTION DB9F TO RJ12 MODULAR ADAPTOR	
CONFIGURATION DETAILS OF UNDIMENSIONED FEATURES MAY VARY		COLOR VARIATIONS MAY OCCUR	SIZE <b>A</b>	FSCM NO. <b>43321</b>
			DWG. NO. REC096F	REV. <b>E</b>
		SCALE: NONE	CAD FILE: REC096F.SLDDRW	SHEET 1 OF 1