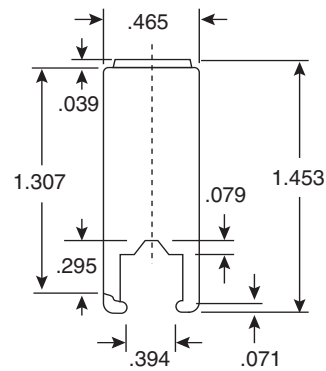
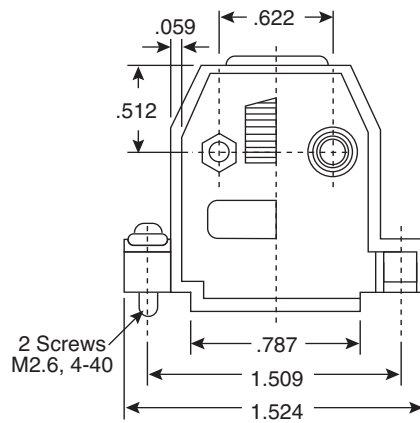
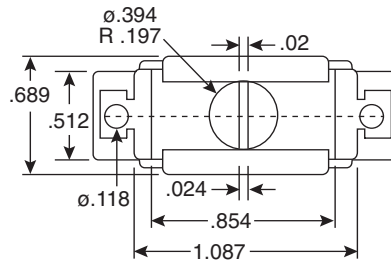
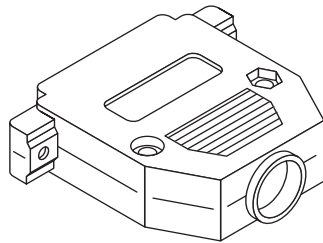


Metalized Plastic Hood

156-3015

KOBICONN

Metalized Plastic Hood



Dimensions: In.

SPECIFICATIONS	
Type:	RFI/EMI shielded, straight cable exit
Material:	Nickel over copper plating
Shell:	Size DB15
Tolerance:	± .004
Mate:	Designed to fit our 152 and 156 connectors

Date Last Revised: 5-9-05

Available from Mouser Electronics
1-800-346-6873
www.mouser.com

KC-303684

156-3015

Mouser Electronics

Authorized Distributor

Click to View Pricing, Inventory, Delivery & Lifecycle Information:

[Kobiconn:](#)

[156-3015](#)