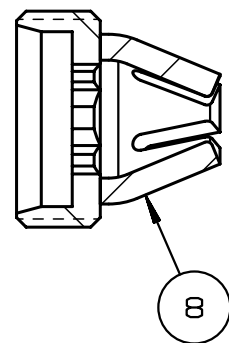
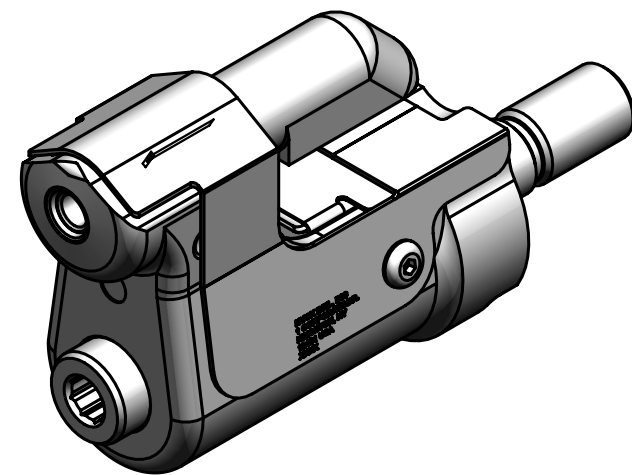
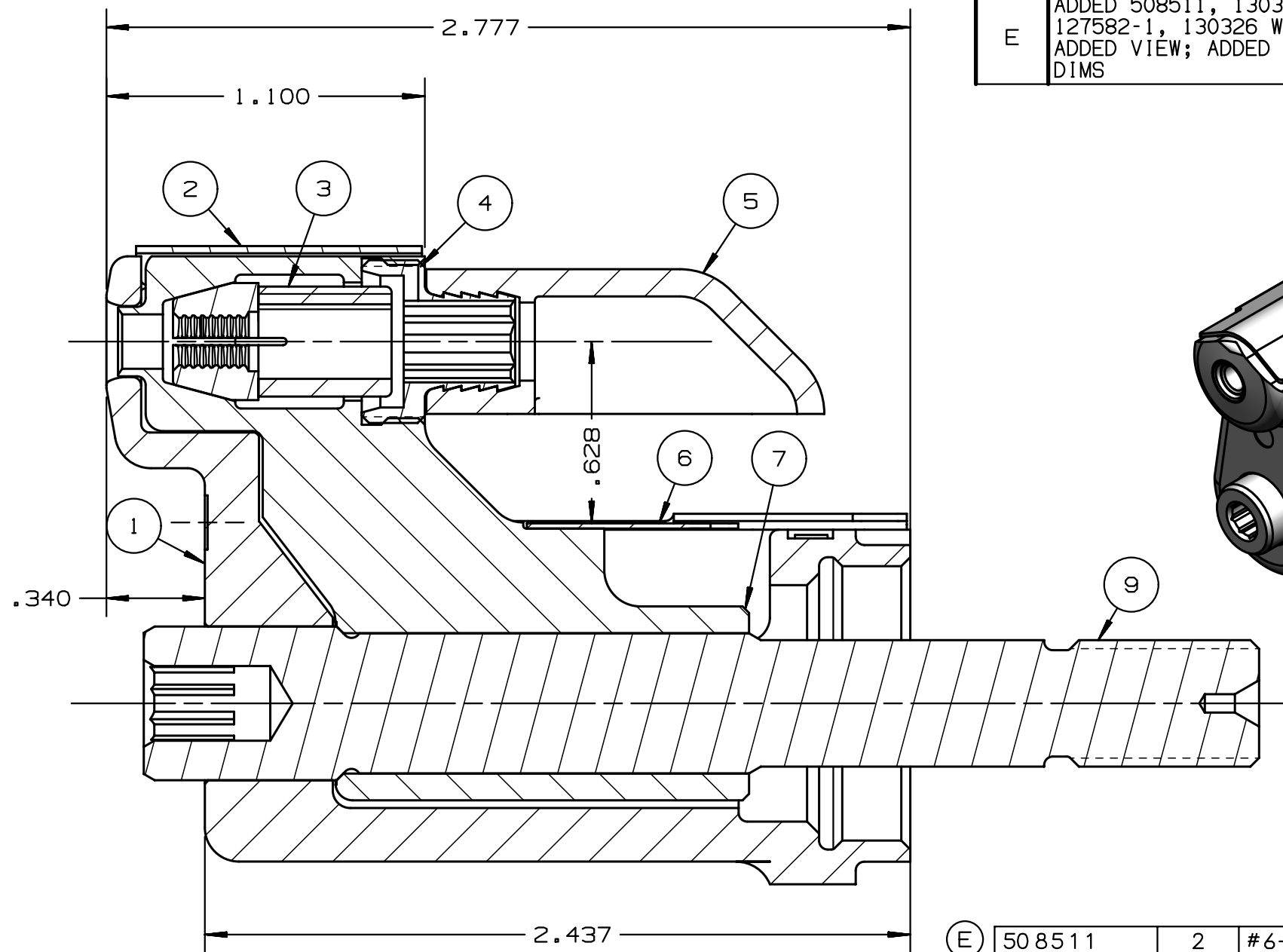
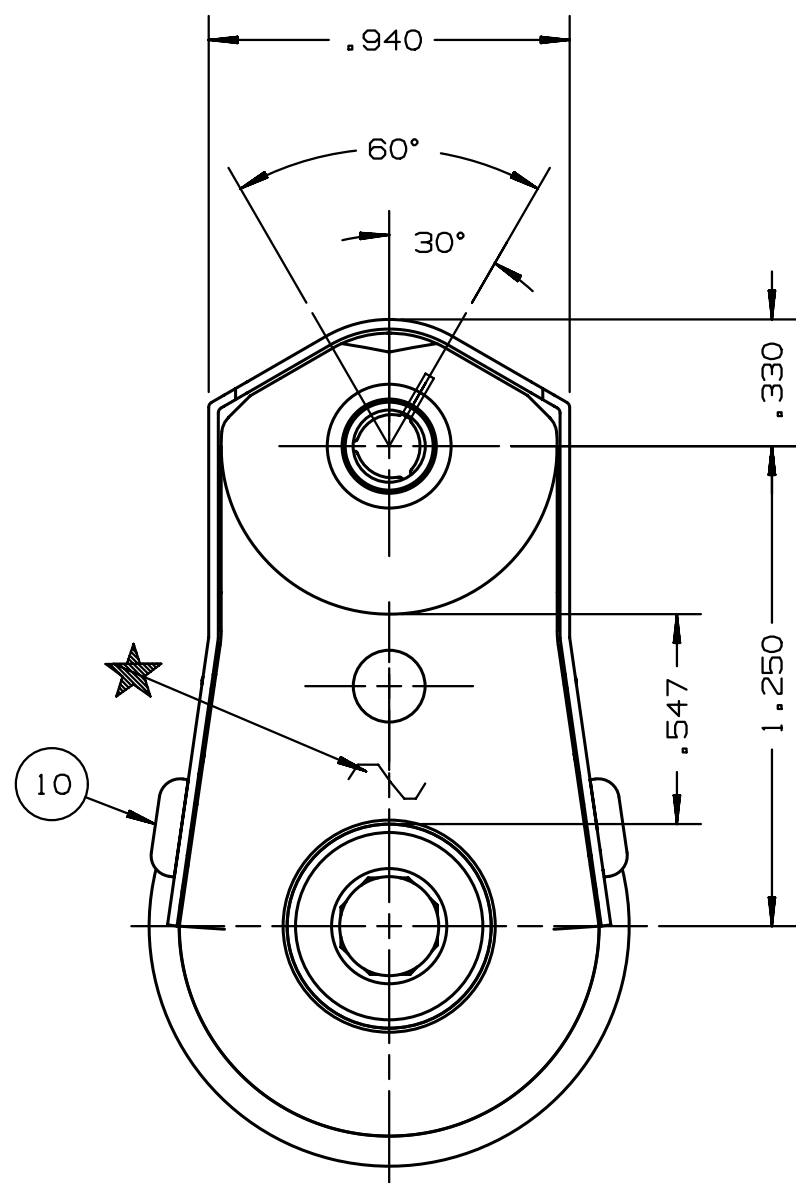


REV	DESCRIPTION	DET	DATE
C	ITEM 3, 130053 WAS 123189	EL	11/10/11
D	128499C WAS 128609C. ADDED 128487	JJC	07/31/12
E	ADDED 508511, 130322CS WAS 127582-1, 130326 WAS 126745; ADDED VIEW; ADDED .547 & .340 DIMS	NDG	06/03/13

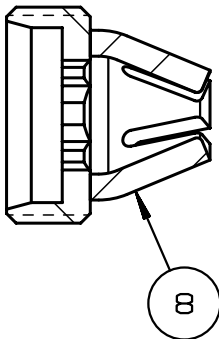
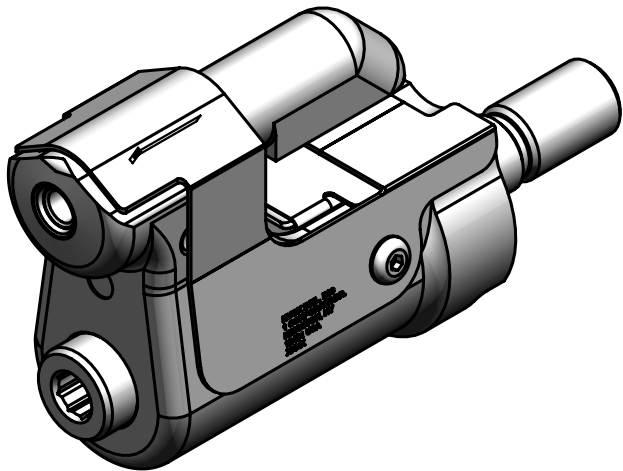
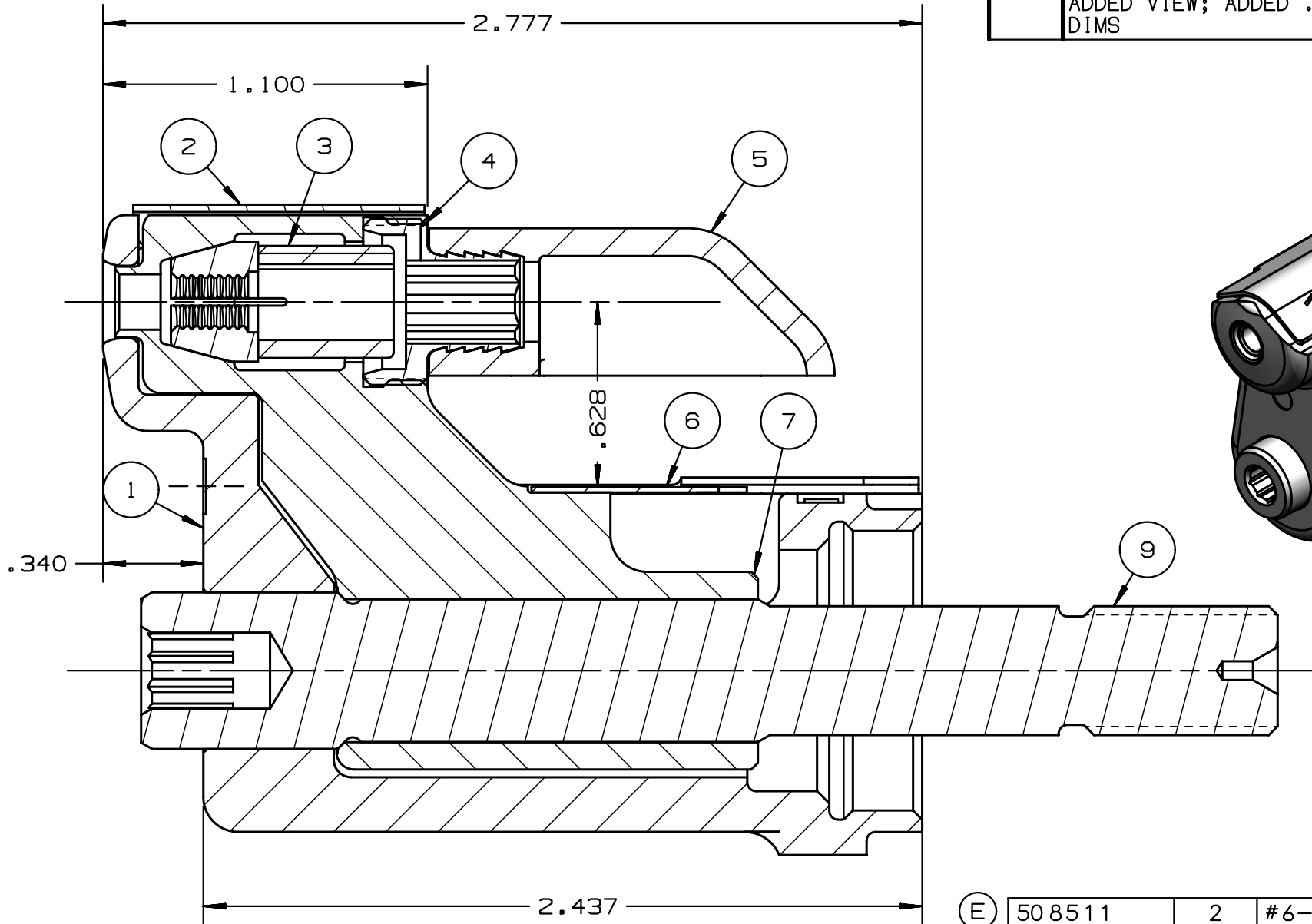
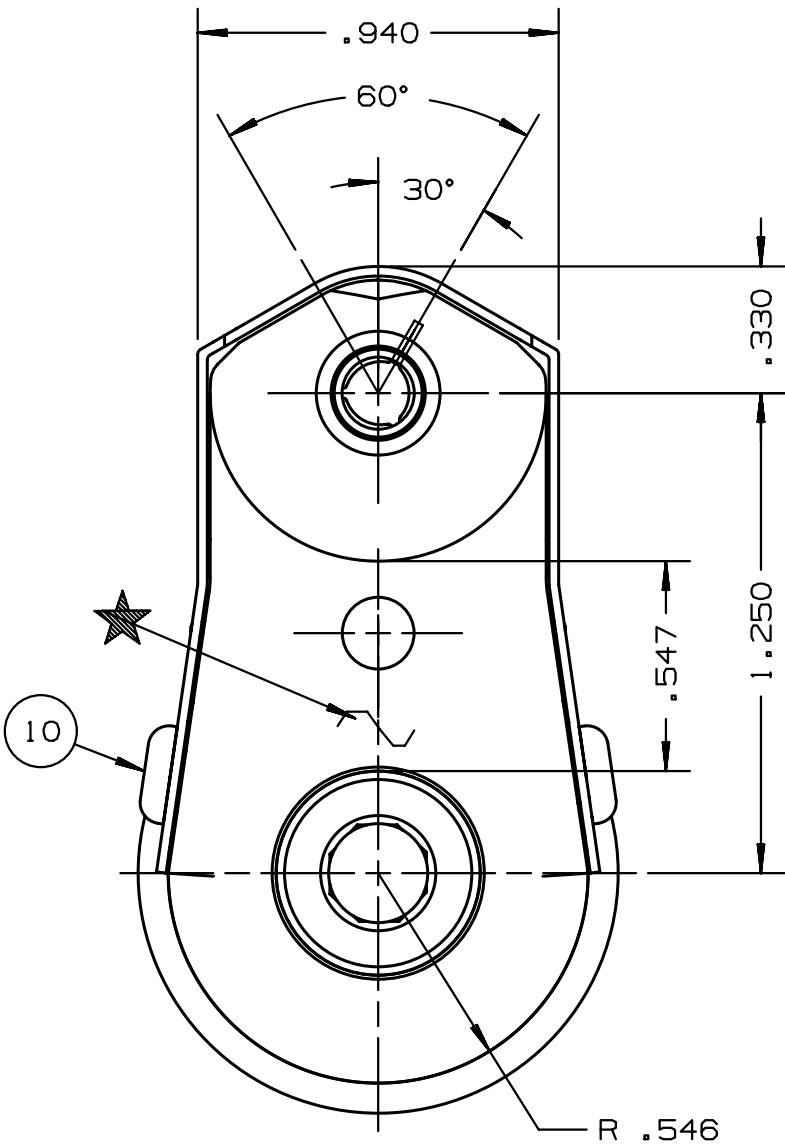


- NOTES:
- 1 MAXIMUM RECOMMENDED STROKE .500
 - 2 FOR USE WITH THE 225/245 TOOL, USE ATTACHMENT P/N 119400-1 AND STROKE LIMITER 118362
 - 3 FOR USE WITH 2500 TOOL, USE ATTACHMENT P/N 119400-1 AND STROKE LIMITER KIT 119888
 - 4 FOR OTHER TOOLS AND/OR OTHER TOOL AND STROKE COMBINATIONS, CONSULT ENGINEERING DEPARTMENT
 - 5 SHIP WITH STOP 126747
 - 6 SHIP WITH DEFLECTOR 126748-2
 - 7 SHIP WITH (2) .030 SHIMS 128290 REFERENCE PB563 FOR PROPER USE

E	508511	2	#6-32 B.H.C.S.	10
	128487	1	DRAWBAR	9
	126748-2	1	UNITIZED DEFLECTOR	8
E	128499C	1	COLLET	7
	130326	1	GUARD	6
	120095	1	DEFLECTOR	5
	122727	1	BARBED RETAINER	4
E	130053	1	UNITIZED CHUCK JAW	3
	130322CS	1	TOP GUARD	2
	127043C	1	ANVIL	1
	PART NO.	QTY	DESCRIPTION	ITEM

IDENTIFICATION PER SPEC 42-311: ★ ETCH		HUCK INTERNATIONAL, INC., I.S.D 1 CORPORATE DR KINGSTON, NEW YORK 12401	
ITAR/ECCN: EAR99		CLEARANCE NOSE ASSEMBLY -06 LGP STRADDLE	
SCH B#: 8467.99.0190		FINAL ASSY: FOR USE WITH 206-375	
HTS: 8467.99.0190		ENG: MVM CK:	DATE: 10/14/04 SCALE: 2:1
		B 99-3734C	

REV	DESCRIPTION	DET	DATE
C	ITEM 3, 130053 WAS 123189	EL	11/10/11
D	128499C WAS 128609C. ADDED 128487	JJC	07/31/12
E	ADDED 508511, 130322CS WAS 127582-1, 130326 WAS 126745; ADDED VIEW; ADDED .547 & .340 DIMS	NDG	06/03/13



- NOTES:
- 1 MAXIMUM RECOMMENDED STROKE .500
 - 2 FOR USE WITH THE 225/245 TOOL, USE ATTACHMENT P/N 119400-1 AND STROKE LIMITER 118362
 - 3 FOR USE WITH 2500 TOOL, USE ATTACHMENT P/N 119400-1 AND STROKE LIMITER KIT 119888
 - 4 FOR OTHER TOOLS AND/OR OTHER TOOL AND STROKE COMBINATIONS, CONSULT ENGINEERING DEPARTMENT
 - 5 SHIP WITH STOP 126747
 - 6 SHIP WITH DEFLECTOR 126748-2
 - 7 SHIP WITH (2) .030 SHIMS 128290 REFERENCE PB563 FOR PROPER USE

E	508511	2	#6-32 B.H.C.S.	10
	128487	1	DRAWBAR	9
	126748-2	1	UNITIZED DEFLECTOR	8
E	128499C	1	COLLET	7
	130326	1	GUARD	6
	120095	1	DEFLECTOR	5
	122727	1	BARBED RETAINER	4
E	130053	1	UNITIZED CHUCK JAW	3
	130322CS	1	TOP GUARD	2
	127043C	1	ANVIL	1
	PART NO.	QTY	DESCRIPTION	ITEM

IDENTIFICATION PER SPEC 42-311: ★ ETCH		HUCK INTERNATIONAL, INC., I.S.D 1 CORPORATE DR KINGSTON, NEW YORK 12401	
ITAR/ECCN: EAR99		CLEARANCE NOSE ASSEMBLY -06 LGP STRADDLE	
SCH B#: 8467.99.0190		FINAL ASSY: FOR USE WITH 206-375	
HTS: 8467.99.0190		ENG: MVM CK:	DATE: 10/14/04 SCALE: 2:1
		B	99-3734C