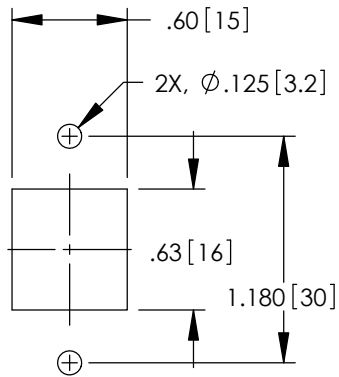
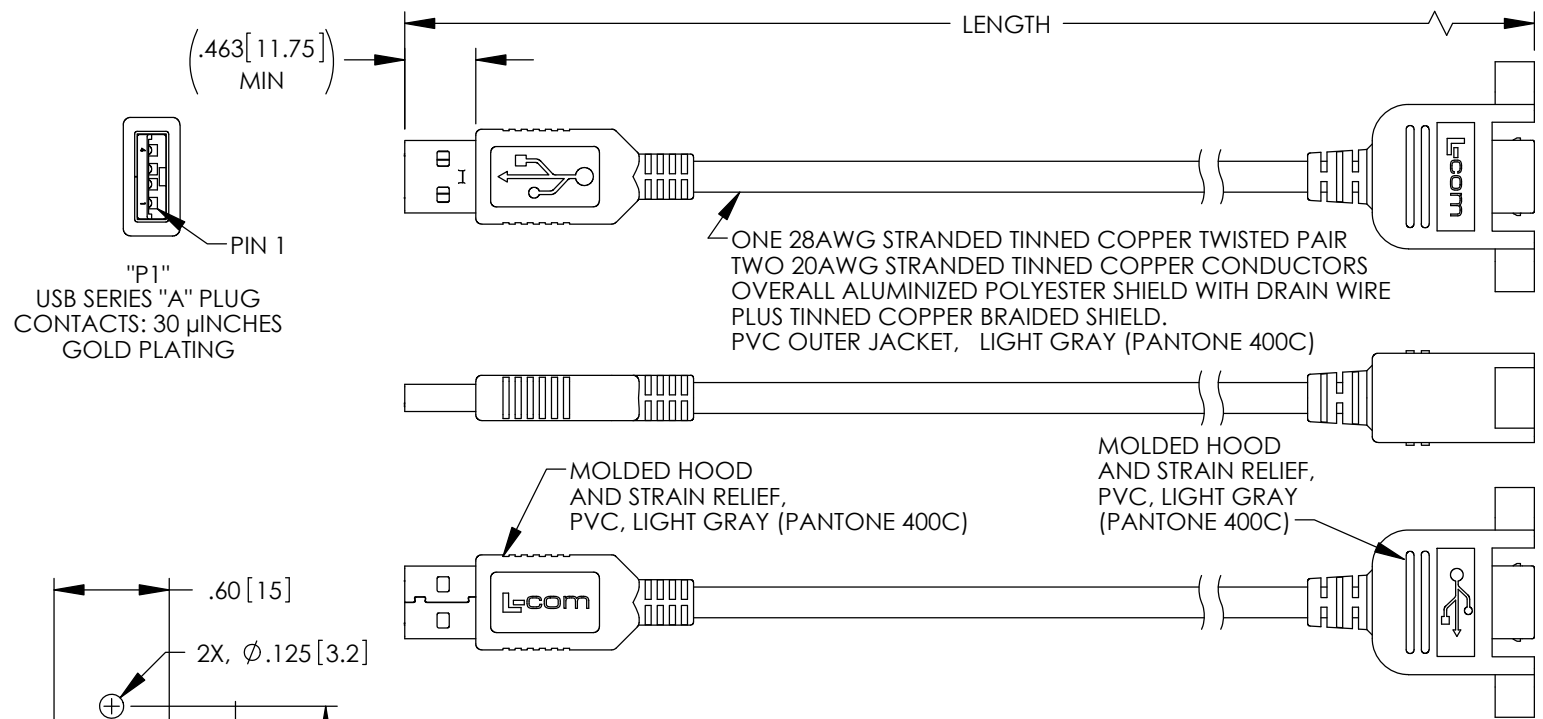
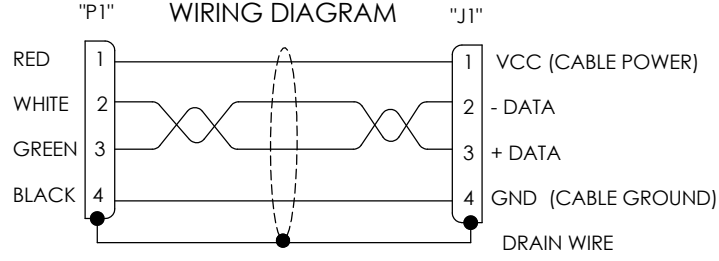


THE INFORMATION CONTAINED IN THIS DRAWING IS THE SOLE PROPERTY OF L-COM, INC. ANY REPRODUCTION IN PART OR WHOLE WITHOUT THE WRITTEN PERMISSION OF L-COM, INC. IS PROHIBITED.

REVISIONS			
REV	DESCRIPTION	DATE	APPROVED
E	ECN 7842: REVISED DIM .55 TO .58, FORMAT, ROHS	3/11/15	D.FRISIELLO



RECOMMENDED PANEL CUTOUT



"J1" USB SERIES "B" RECEPTACLE PANEL MOUNT CONTACTS: 30 μINCHES GOLD PLATING

MODEL NUMBER	LENGTH METERS [FEET]
UPMBA-03M	0.3 [.98]
UPMBA-05M	0.5 [1.64]
UPMBA-075M	0.75 [2.46]
UPMBA-1M	1.0 [3.28]
UPMBA-2M	2.0 [6.56]
UPMBA-3M	3.0 [9.84]
UPMBA-4M	4.0 [13.12]
UPMBA-5M	5.0 [16.41]

- NOTES:**
- CABLE ASSEMBLY SHALL HAVE 360° SHIELD TERMINATION.
 - CABLE ASSEMBLY SHALL MEET USB 2.0 REQUIREMENTS.
 - CABLE ASSEMBLY SHALL BE TESTED FOR CONTINUITY.
 - MOUNTING HARDWARE INCLUDED: 2X #4-40 X .38 LG. PHILLIPS HD SCREW
 - CABLE ASSEMBLY SHALL BE INDIVIDUALLY PACKAGED IN ACCORDANCE WITH L-COM SPECIFICATION PS-0031.

REGULATORY COMPLIANCE:
CE2011/65/EU (RoHS DIRECTIVE)

UNLESS OTHERWISE SPECIFIED, DIMENSIONS ARE IN INCHES [mm] OVERALL CABLE LENGTH TOLERANCE: $\leq 12 [305] = +1 [25] / -0$ $> 12 [305] \leq 60 [1524] = +2 [51] / -0$ $> 60 [1524] \leq 120 [3048] = +4 [102] / -0$ $> 120 [3048] \leq 300 [7620] = +6 [152] / -0$ $> 300 [7620] = +5\% / -0\%$	APPROVALS	DATE		45 BEECHWOOD DRIVE NORTH ANDOVER, MA 01845
	DRAWN BY D. PARHAM	01/04/2010		CATEGORY
ALL OTHER DIMENSIONAL TOLERANCES: .X = ±.2 [5.08] .XX = ±.02 [1.51] .XXX = ±.005 [1.13]	CHECKED BY D. CASTRO	01/12/2010	PRODUCT DESCRIPTION	
PROJECTION	APPROVED BY S. SMITH	01/13/2010	CA USB-B PNL/USB-AM	
	CONFIGURATION DETAILS OF UNDIMENSIONED FEATURES MAY VARY	COLOR VARIATIONS MAY OCCUR	SIZE A	FSCM NO. 43321
			DWG. NO. UPMBA	REV. E
			SCALE: NONE	CAD FILE: UPMBA.SLDDRW
				SHEET 1 OF 1