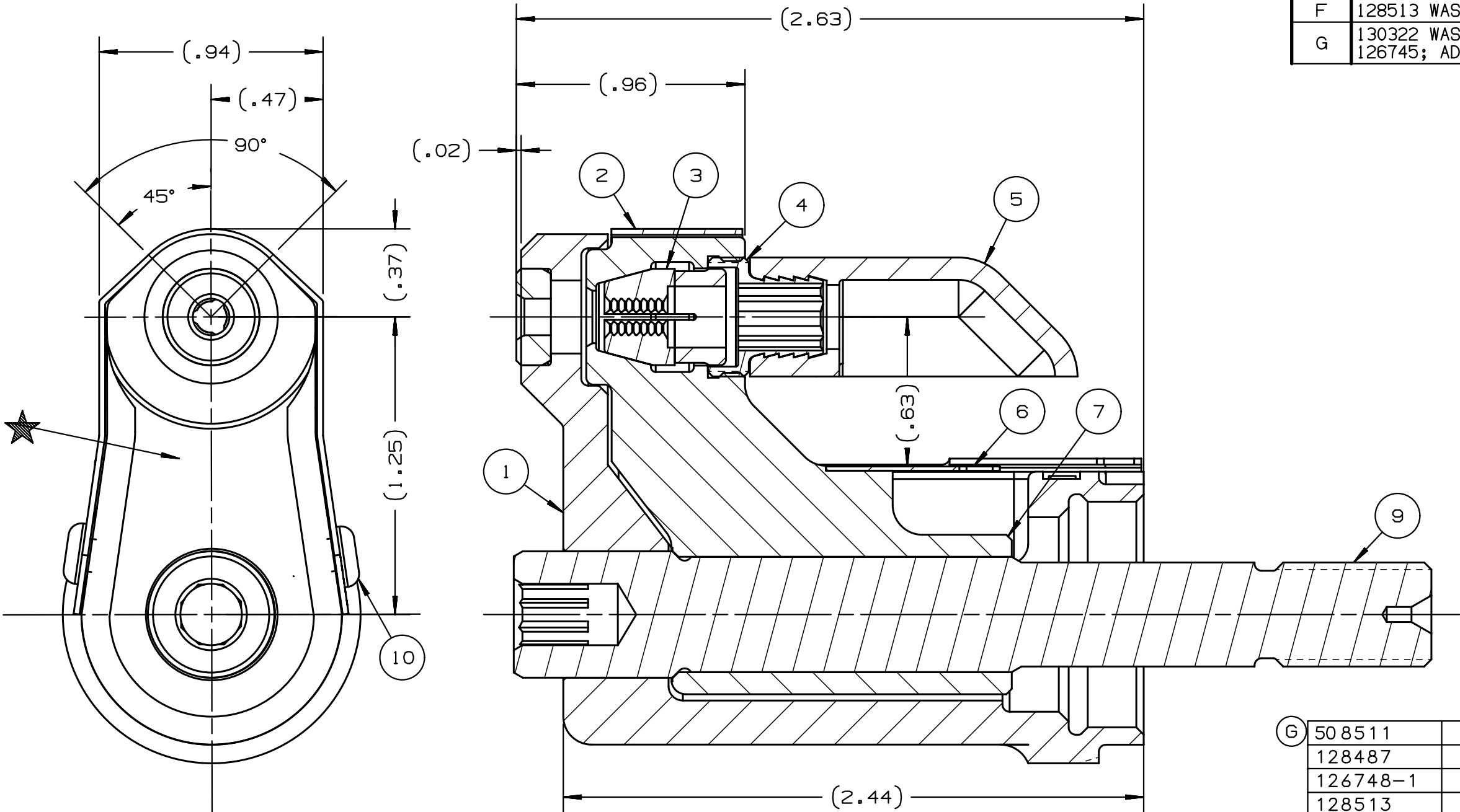
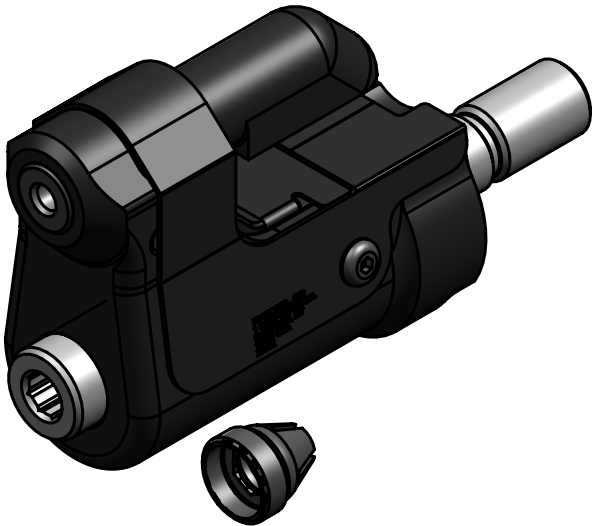


REV	DESCRIPTION	DET	DATE
E	REWROTE NOTES; ADDED .453 CENTER TO EDGE DIMENSION		11/24/09
F	128513 WAS 128623. ADDED 128487	JJC	08/03/12
G	130322 WAS 126746; 130326 WAS 126745; ADDED 508511 SCREWS	HKS	5/26/15



NOTES:

- 1 MAXIMUM RECOMMENDED STROKE .500
- 2 FOR USE WITH THE 206-500 TOOL. FOR OTHER TOOLS AND/OR STROKE COMBINATIONS, REFER TO THE STROKE LIMITER CHART (HK1122) OR CONSULT AN AFS/HUCK SPECIALIST.
- 3 SHIP WITH: STOP 126747, DEFLECTOR 126748-1 AND (2) .030 SHIMS 128290 REFERENCE PB563 FOR PROPER USE.
- 4 127296 ASSEMBLY CONSISTS OF 127077 ANVIL HOLDER AND 127207-06 ANVIL INSERT

SECTION A - A

⑤	508511	2	B.H.C.S. #6-32	10
	128487	1	DRAWBAR	9
	126748-1	1	UNITIZED DEFLECTOR	8
	128513	1	COLLET	7
⑤	130326	1	BACK GUARD	6
	120095	1	DEFLECTOR	5
	122912	1	BARBED RETAINER	4
	128078	1	UNITIZED CHUCK JAW	3
⑤	130322	1	WRAP AROUND GUARD	2
	127296	1	ANVIL ASSEMBLY	1
	PART NO.	QTY	DESCRIPTION	ITEM

IDENTIFICATION PER SPEC 42-311: ★ ETCH			
ITAR:		HUCK INTERNATIONAL, INC., I.S.D. 1 CORPORATE DR, P.O. BOX 2270 KINGSTON, NEW YORK 12401	
ECCN: EAR99		NOSE ASSEMBLY -06 UAB BR	
SCH B#: 8467.99.0190		DET: MVM	CK: DATE: 06/16/03 SCALE: 2:1
HTS: 8467.99.0190		B	99-3765