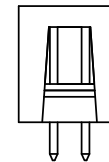
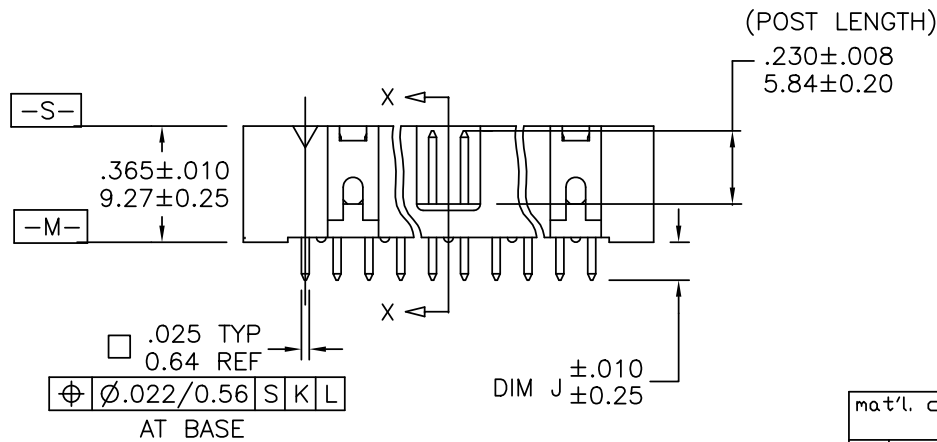
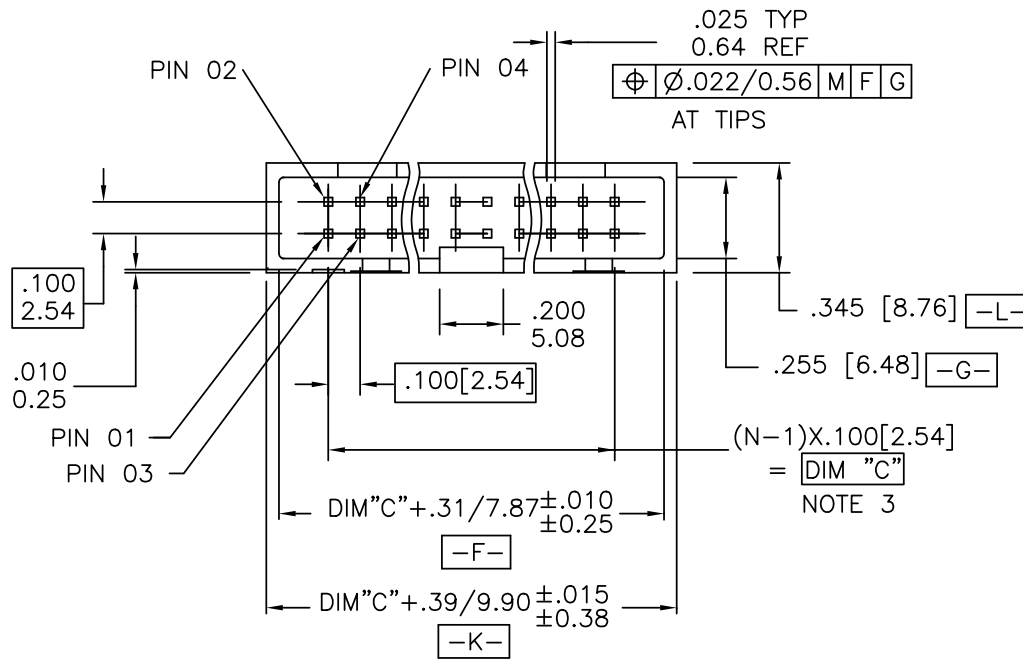


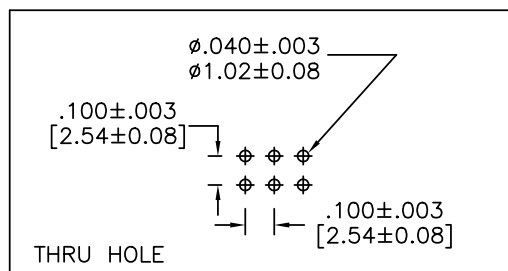
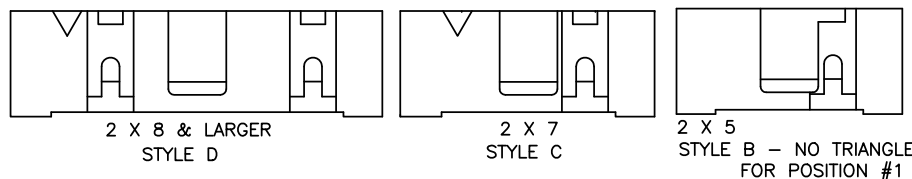
PRODUCT NUMBER
SEE TABLE



mat'l. code				surface ISO 1302 ✓	tolerance ISO 406 ISO 1101	projection ISO 1101	product family QUICKIE			
ltr	ecr	nldr	date	tolerances unless otherwise specified		INCH/MM	title HEADER QUICKIE SLIM LINE VERTICAL 4 WALL			
AD	V42013	LSS	1/25/95	angles	linear					
AE	V50332	MRC	5/25/95	±2'	linear	scale 1:1	dwg no 66506			
AF	N05-0060	ERE	8/08/05	±2'	linear	scale 1:1				
AG	M06-0282	AGS	7/22/06	dr	L. SANDERS	1/25/95	sheet of 10 size A3			
AH	M07-0363	MHT	8/17/07	enr	M. SMYK	1/25/95				
AJ	N08-0138	R.B	07/08/08	chr	J. ROMBERGER	1/25/95	type Product Customer Drawing			
AK	N1X-N-012003	J.Z	2012-07-04	appd	M. SMYK	1/25/95				
sheet	revisio	AK	AK	AK	AK	AK	AK	AK	AK	AK
index	sheet	1	2	3	4	5	6	7	8	9

PRODUCT NUMBER
SEE TABLE

HEADER STYLE



RECOMMENDED BOARD LAYOUT

NOTES:

1. SAME POSITION TOLERANCE APPLIES TO BOTH ENDS OF PINS.
2. MOLDING MATERIAL: GLASS-FILLED POLYESTER, FLAME RETARDANT PER UL 94 V-0, COLOR: BLACK.
3. 1° MAX. DRAFT PERMISSIBLE ON ALL SURFACES.
4. 3 LBS./1.36 KG MIN. TERMINAL PULL-OUT FORCE.
5. TERMINAL MATERIAL: PHOSPHORUS BRONZE.
6. TO DETERMINE DIMENSIONS:
N = NUMBER OF POSITIONS PER ROW
7. UNDER PLATING: 50μ"/1.27μm Ni.
8. PART NUMBERS WITH "R" FOLLOWING THE PART NUMBER (EXAMPLE 66506-326 R) HAS RETENTION. (ONLY PARTS WITH .105, .120, AND .150 ROUND OR SQUARE TAILS CAN HAVE RETENTION.) LOCATION IS MANUFACTURER'S OPTION.
FOR CONNECTORS:
RETENTIVE LEG APPLICABLE TO TAIL LENGTHS .125/3.18 MAX. 5LB/2.3KG MAX INSERTION FORCE AND .25LB./1KG MIN RETENTION FORCE PER RETENTIVE PIN USING .062/1.57 THICK CIRCUIT BOARD AND RECOMMENDED HOLE PATTERN. RETENTIVE LOCATION AT THE DISCRETION OF THE MANUFACTURER. RETENTION PIN MAY BE SHIFTED TO NEXT POSITION.
9. PART NUMBERS WITH "T" FOLLOWING PART NUMBER (EXAMPLE 66506-068 T IS PACKED IN TUBES.) (CALL PRODUCT MANAGER FOR AVAILABILITY.)
10. SEE 68751 FOR LATCHES.
11. MAY BE ORDERED WITH "G" PACK PACKAGING BY ADDING "G" TO DASH NUMBER.
12. ADD "LF" SUFFIX AT THE END OF PART NUMBER FOR LEAD FREE OPTION & PART NUMBERS WITH "LF" SUFFIX ADDED IN THE TABLE ARE LEAD FREE.
13. IF "LF" P/N THE PRODUCT MEETS EUROPEAN UNION DIRECTIVES AND OTHER COUNTRY REGULATION AS DESCRIBED IN GS-22-008.
14. THE HOUSING WILL WITHSTAND EXPOSURE TO 260°C PEAK TEMPERATURE FOR 15 SECONDS IN A WAVE SOLDER APPLICATION WITH A 1.57mm MINIMUM THICK CIRCUIT BOARD. SEE APPLICATION NOTES/PROCEDURES IF THEY ARE AVAILABLE.
15. "THIS PRODUCT HAS 100% TIN PLATING IN THE INTERFACE AND HAS NOT BEEN TESTED FOR WHISKER GROWTH IN ALL INTERCONNECT ENVIRONMENTS."
16. PLATING OPTIONS:
PERFORMANCE PLATING WILL BE EITHER GOLD OR GXT ON CONTACT OR TAIL, OPTIONALLY TIN ON TAIL.

mat'l. code		surface	tolerance	projection	product family	
		ISO 1302	ISO 406 ISO 1101		QUICKIE	
ltr	ecn	no	date		title	
AK				angles	HEADER QUICKIE SLIM LINE	
				linear	VERTICAL 4 WALL	
				±2°	scale 1:1	
		dr	L. SANDERS	1/25/95	FCI	dwg no
		engr	M. SMYK	1/25/95		66506
		chr	J. ROMBERGER	1/25/95		size
		appd	M. SMYK	1/25/95	type Product Customer Drawing	
sheet	revision					
index	sheet					

1

2 3

4

5

6

PRODUCT NUMBER NOTE 8, 9 & 12	SIZE	STYLE	DIM C	DIM J	PIN PLATING	PLASTIC MATERIAL
66506 -025	2 X 20	D	1.900/48.26	.105/2.67	30u"/0.76u MIN (NOTE 16) OVER 50u"/1.27u Ni	NOTE 2
-026				.150/3.81	30u"/0.76u MIN (NOTE 16) OVER 50u"/1.27u Ni	
-027				.675/17.15	30u"/0.76u MIN (NOTE 16) OVER 50u"/1.27u Ni	
-028				.105/2.67	120/200u" TIN LEAD	
-028LF				.105/2.67	100/160u" TIN	
-029				.150/3.81	120/200u" TIN LEAD	
-029LF				.150/3.81	100/160u" TIN	
-030				.675/17.15	120/200u" TIN LEAD	
-030LF	2 X 20		1.900/48.26	.675/17.15	100/160u" TIN	
-031	2 X 25		2.400/60.96	.105/2.67	30u"/0.76u MIN (NOTE 16) OVER 50u"/1.27u Ni	
-032				.150/3.81	30u"/0.76u MIN (NOTE 16) OVER 50u"/1.27u Ni	
-033				.675/17.15	30u"/0.76u MIN (NOTE 16) OVER 50u"/1.27u Ni	
-034				.105/2.67	120/200u" TIN LEAD	
-034LF				.105/2.67	100/160u" TIN	
-035				.150/3.81	120/200u" TIN LEAD	
-035LF				.150/3.81	100/160u" TIN	
-036				.675/17.15	120/200u" TIN LEAD	
-036LF	2 X 25	D	2.400/60.96	.675/17.15	100/160u" TIN	
-037	2 X 7	C	.600/15.24	.105/2.67	30u"/0.76u MIN (NOTE 16) OVER 50u"/1.27u Ni	
-038				.150/3.81	30u"/0.76u MIN (NOTE 16) OVER 50u"/1.27u Ni	
-039				.675/17.15	30u"/0.76u MIN (NOTE 16) OVER 50u"/1.27u Ni	
-040				.105/2.67	120/200u" TIN LEAD	
-040LF				.105/2.67	100/160u" TIN	
-041				.150/3.81	120/200u" TIN LEAD	
-041LF				.150/3.81	100/160u" TIN	
-042				.675/17.15	120/200u" TIN LEAD	
-042LF	2 X 7	C	.600/15.24	.675/17.15	100/160u" TIN	
-043	2 X 8	D	.700/17.78	.105/2.67	30u"/0.76u MIN (NOTE 16) OVER 50u"/1.27u Ni	
-044				.150/3.81	30u"/0.76u MIN (NOTE 16) OVER 50u"/1.27u Ni	
-045				.675/17.15	30u"/0.76u MIN (NOTE 16) OVER 50u"/1.27u Ni	
-046				.105/2.67	120/200u" TIN LEAD	
-046LF				.105/2.67	100/160u" TIN	
-047				.150/3.81	120/200u" TIN LEAD	
-047LF				.150/3.81	100/160u" TIN	
-048				.675/17.15	120/200u" TIN LEAD	
66506 -048LF	2 X 8	D	.700/17.78	.675/17.15	100/160u" TIN	NOTE 2

A

B

C

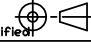
D

A

B

C

D

mat'l. code		surface ISO 1302 ✓		tolerance ISO 406 ISO 1101		projection 		product family QUICKIE	
ltr ecn nopr date		tolerances unless otherwise specified		linear		INCH/MM		title HEADER QUICKIE SLIM LINE VERTICAL 4 WALL	
AK		angles		±2"		scale 1:1		dwg no 66506	
		dir L. SANDERS		1/25/95		FCI		shee# of 10 size A3	
		engr M. SMYK		1/25/95					
		chr J. ROMBERGER		1/25/95					
		appd M. SMYK		1/25/95				type Product Customer Drawing	
sheet index		revision sheet							

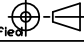


FCIconnect.com

Copyright FCI

D

PRODUCT NUMBER NOTE 8,9 & 12		SIZE	STYLE	DIM C	DIM J	PIN PLATING	PLASTIC MATERIAL
66506	-049	2 X 5	B	.400/10.16	.150/3.81	30u"/0.76u MIN (NOTE 16) OVER 50u"/1.27u Ni	NOTE 2
	-050	2 X 10	D	.900/22.86			
	-051	2 X 13		1.200/30.48			
	-052	2 X 17		1.600/40.64			
	-053	2 X 20		1.900/48.26			
	-054	2 X 25	D	2.400/60.96			
	-055	2 X 7	C	.600/15.24			
	-056	2 X 8	D	.700/17.78	.150/3.81	30u"/0.76u MIN (NOTE 16) OVER 50u"/1.27u Ni	
	-057	2 X 30		2.900/73.66	.105/2.67	30u"/0.76u MIN (NOTE 16) OVER 50u"/1.27u Ni	
	-058				.150/3.81	30u"/0.76u MIN (NOTE 16) OVER 50u"/1.27u Ni	
	-059				.675/17.15	30u"/0.76u MIN (NOTE 16) OVER 50u"/1.27u Ni	
	-060				.105/2.67	120/200u" TIN LEAD	
	-060LF				.105/2.67	100/160u" TIN	
	-061				.150/3.81	120/200u" TIN LEAD	
	-061LF				.150/3.81	100/160u" TIN	
	-062				.675/17.15	120/200u" TIN LEAD	
	-062LF				.675/17.15	100/160u" TIN	
	-063				.105/2.67	30u"/0.76u MIN (NOTE 16) OVER 50u"/1.27u Ni	
	-064				.150/3.81		
	-065	2 X 30	D	2.900/73.66	.675/17.15		
	-066	2 X 5	B	.400/10.16	.105/2.67		
	-067	2 X 5	B	.400/10.16	.675/17.15		
	-068	2 X 7	C	.600/15.24	.105/2.67		
	-069	2 X 7	C	.600/15.24	.675/17.15		
	-070	2 X 8	D	.700/17.78	.105/2.67	30u"/0.76u MIN (NOTE 16) OVER 50u"/1.27u Ni	
	-071	2 X 8	D	.700/17.78	.675/17.15	30u"/0.76u MIN (NOTE 16) OVER 50u"/1.27u Ni	
	-072	2 X 10		.900/22.86	.105/2.67		
	-073	2 X 10		.900/22.86	.675/17.15		
	-074	2 X 13		1.200/30.48	.105/2.67		
	-075	2 X 13		1.200/30.48	.675/17.15		
	-076	2 X 17		1.600/40.64	.105/2.67		
	-077	2 X 17		1.600/40.64	.675/17.15		
	-078	2 X 20		1.900/48.26	.105/2.67		
	-079	2 X 20		1.900/48.26	.675/17.15		
	-080	2 X 25		2.400/60.96	.105/2.67		
66506	-081	2 X 25	D	2.400/60.96	.675/17.15	30u"/0.76u MIN (NOTE 16) OVER 50u"/1.27u Ni	NOTE 2

mat'l. code		surface ISO 1302 ✓		tolerance ISO 406 ISO 1101		projection 		product family QUICKIE	
ltr ecn nodr date		tolerances unless otherwise specified		linear		INCH/MM		title HEADER QUICKIE SLIM LINE VERTICAL 4 WALL	
AK		angles		XXX±.01/XXX±.03 XXX±.005/XXX±.013 XXX±.0020/XXX±.0051		scale 1:1		dwg no 66506	
		dir		L. SANDERS		1/25/95		shee 5 of 10 size	
		engr		M. SMYK		1/25/95		A3	
		chr		J. ROMBERGER		1/25/95			
		appd		M. SMYK		1/25/95		type Product Customer Drawing	
sheet index		revision sheet							

1

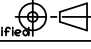
2 3

4

5

6

PRODUCT NUMBER NOTE 8,9 & 12	SIZE	STYLE	DIM C	DIM J	PIN PLATING	PLASTIC MATERIAL
66506-082	2 X 5	B	.400/10.16	.105/2.67	15u"/0.38u MIN (NOTE 16) OVER 50u"/1.27u Ni	NOTE 2
-083	2 X 5	B	.400/10.16	.150/3.81		
-084	2 X 5	B	.400/10.16	.675/17.15		
-085	2 X 7	C	.600/15.24	.105/2.67		
-086	2 X 7	C	.600/15.24	.150/3.81		
-087	2 X 7	C	.600/15.24	.675/17.15		
-088	2 X 8	D	.700/17.78	.105/2.67		
-089	2 X 8		.700/17.78	.150/3.81		
-090	2 X 8		.700/17.78	.675/17.15		
-091	2 X 10		.900/22.86	.105/2.67		
-092	2 X 10		.900/22.86	.150/3.81		
-093	2 X 10		.900/22.86	.675/17.15		
-094	2 X 13		1.200/30.48	.105/2.67		
-095	2 X 13		1.200/30.48	.150/3.81		
-096	2 X 13		1.200/30.48	.675/17.15		
-097	2 X 17		1.600/40.64	.105/2.67		
-098	2 X 17		1.600/40.64	.150/3.81		
-099	2 X 17		1.600/40.64	.675/17.15		
-100	2 X 20		1.900/48.26	.105/2.67		
-101	2 X 20		1.900/48.26	.150/3.81		
-102	2 X 20		1.900/48.26	.675/17.15		
-103	2 X 25		2.400/60.96	.105/2.67		
-104	2 X 25		2.400/60.96	.150/3.81		
-105	2 X 25	D	2.400/60.96	.675/17.15	15u"/0.38u MIN (NOTE 16) OVER 50u"/1.27u Ni	
-106	2 X 30	D	2.900/73.66	.105/2.67	15u"/0.38u MIN (NOTE 16) OVER 50u"/1.27u Ni	
-107	2 X 30	D	2.900/73.66	.150/3.81	15u"/0.38u MIN (NOTE 16) OVER 50u"/1.27u Ni	
-108	2 X 30	D	2.900/73.66	.675/17.15	15u"/0.38u MIN (NOTE 16) OVER 50u"/1.27u Ni	
-109	2 X 5	B	.400/10.16	.105/2.67	30u"/0.76u MIN (NOTE 16) OVER 50u"/1.27u Ni	
-110				.150/3.81	30u"/0.76u MIN (NOTE 16) OVER 50u"/1.27u Ni	
-111				.675/17.15	30u"/0.76u MIN (NOTE 16) OVER 50u"/1.27u Ni	
-112				.105/2.67	120/200u" TIN LEAD	
-112LF				.105/2.67	100/160u" TIN	
-113				.150/3.81	120/200u" TIN LEAD	
-113LF				.150/3.81	100/160u" TIN	
-114				.675/17.15	120/200u" TIN LEAD	
66506-114LF	2 X 5	B	.400/10.16	.675/17.15	100/160u" TIN	NOTE 2

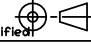
mat'l. code		surface ISO 1302 ✓		tolerance ISO 406 ISO 1101		projection 		product family QUICKIE	
ltr ecn nopr date		tolerances unless otherwise specified		linear XXX±.01/XXX±.03 XXX±.005/XXX±.013 XXX±.0020/XXX±.0051		INCH/MM		title HEADER QUICKIE SLIM LINE VERTICAL 4 WALL	
AK		angles ±2°		scale 1:1		FCCI		dwg no 66506	
		dir L. SANDERS 1/25/95						sheet 6 of 10 size A3	
		engr M. SMYK 1/25/95							
		chr J. ROMBERGER 1/25/95							
		appd M. SMYK 1/25/95						type Product Customer Drawing	
sheet index		revision sheet							



FCIconnect.com

Copyright FCI

PRODUCT NUMBER NOTE 8,9 & 12	SIZE	STYLE	DIM C	DIM J	PIN PLATING	PLASTIC MATERIAL
66506-115	2 X 5	B	.400/10.16	.105/2.67	15u"/0.38u MIN (NOTE 16) OVER 50u"/1.27u Ni	NOTE 2
-116				.150/3.81	15u"/0.38u MIN (NOTE 16) OVER 50u"/1.27u Ni	
-117				.675/17.15	15u"/0.38u MIN (NOTE 16) OVER 50u"/1.27u Ni	
-118				.105/2.67	30u"/0.76u MIN (NOTE 16) OVER 50u"/1.27u Ni	
-119				.150/3.81	30u"/0.76u MIN (NOTE 16) OVER 50u"/1.27u Ni	
-120	2 X 5	B	.400/10.16	.675/17.15	30u"/0.76u MIN (NOTE 16) OVER 50u"/1.27u Ni	NOTE 2
-121	DISCONTINUED					
THRU						
-216						
-217	2 X 12	D	1.100/27.94	.105/2.67	15u"/0.38u MIN (NOTE 16) OVER 50u"/1.27u Ni	NOTE 2
-218					30u"/0.76u MIN (NOTE 16) OVER 50u"/1.27u Ni	
-219					30u"/0.76u MIN (NOTE 16) OVER 50u"/1.27u Ni	
-220				.105/2.67	120/200u" TIN LEAD	
-220LF				.105/2.67	100/160u" TIN	
-221				.150/3.81	15u"/0.38u MIN (NOTE 16) OVER 50u"/1.27u Ni	
-222					30u"/0.76u MIN (NOTE 16) OVER 50u"/1.27u Ni	
-223					30u"/0.76u MIN (NOTE 16) OVER 50u"/1.27u Ni	
-224				.150/3.81	120/200u" TIN LEAD	
-224LF				.150/3.81	100/160u" TIN	
-225				.675/17.15	15u"/0.38u MIN (NOTE 16) OVER 50u"/1.27u Ni	
-226					30u"/0.76u MIN (NOTE 16) OVER 50u"/1.27u Ni	
-227					30u"/0.76u MIN (NOTE 16) OVER 50u"/1.27u Ni	
-228					120/200u" TIN LEAD	
-228	2 X 12		1.100/27.94	.675/17.15	100/160u" TIN	
-229	2 X 15		1.400/35.56	.105/2.67	15u"/0.38u MIN (NOTE 16) OVER 50u"/1.27u Ni	
-230					30u"/0.76u MIN (NOTE 16) OVER 50u"/1.27u Ni	
-231					30u"/0.76u MIN (NOTE 16) OVER 50u"/1.27u Ni	
-232				.105/2.67	120/200u" TIN LEAD	
-232LF				.105/2.67	100/160u" TIN	
-233	2 X 15	D	1.400/35.56	.150/3.81	15u"/0.38u MIN (NOTE 16) OVER 50u"/1.27u Ni	
-234	2 X 15	D	1.400/35.56	.150/3.81	30u"/0.76u MIN (NOTE 16) OVER 50u"/1.27u Ni	
-235				.150/3.81	30u"/0.76u MIN (NOTE 16) OVER 50u"/1.27u Ni	
-236				.150/3.81	120/200u" TIN LEAD	
-236LF				.150/3.81	100/160u" TIN	
66506-237	2 X 15	D	1.400/35.56	.675/17.15	15u"/0.38u MIN (NOTE 16) OVER 50u"/1.27u Ni	NOTE 2

mat'l. code		surface ISO 1302 ✓		tolerance ISO 406 ISO 1101		projection 		product family QUICKIE	
ltr ecn nodr date		tolerances unless otherwise specified		linear		INCH/MM		title HEADER QUICKIE SLIM LINE VERTICAL 4 WALL	
AJ		angles		±2"		scale 1:1		dwg no 66506	
		dir L. SANDERS		1/25/95		FCI		shee 7 of 10 size A3	
		enr M. SMYK		1/25/95					
		chr J. ROMBERGER		1/25/95					
		app M. SMYK		1/25/95				type Product Customer Drawing	
sheet index		revision sheet							

DD

1

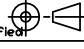
2 3

4

5

6

PRODUCT NUMBER NOTE 8,9 & 12	SIZE	STYLE	DIM C	DIM J	PIN PLATING (NOTE 16)	PLASTIC MATERIAL
66506-314	2 X 15	D	1.400/35.56	.097/2.46	30u"/0.76u MIN (NOTE 16) OVER 50u"/1.27u Ni	NOTE 2
-315	2 X 17		1.600/40.64			
-316	2 X 20		1.900/48.26			
-317	2 X 22		2.100/53.34			
-318	2 X 25		2.400/60.96			
-319	2 X 30		2.900/73.66	.097/2.46	30u"/0.76u MIN (NOTE 16) OVER 50u"/1.27u Ni	
-320	2 X 8		.700/17.78	.105/2.67	30u"/0.76u MIN (NOTE 16) OVER 50u"/1.27u Ni	
-321	2 X 25		2.400/60.96		30u"/0.76u MIN (NOTE 16) OVER 50u"/1.27u Ni	
-322	2 X 8		.700/17.78		50u"/1.27u MIN (NOTE 16) OVER 50u"/1.27u Ni	
-323	2 X 17		1.600/40.64	.105/2.67	50u"/1.27u MIN (NOTE 16) OVER 50u"/1.27u Ni	
-324	2 X 25		2.400/60.96	.120/3.05	15u"/.38u MIN (NOTE 16) OVER 50u"/1.27u Ni	
-325	2 X 25		2.400/60.96	.150/3.81	30u"/0.76u MIN (NOTE 16) OVER 50u"/1.27u Ni	
-326	2 X 10		.900/22.86	.120/3.05	15u"/.38u MIN (NOTE 16) OVER 50u"/1.27u Ni	
-327	2 X 17		1.600/40.64	.120/3.05	15u"/.38u MIN (NOTE 16) OVER 50u"/1.27u Ni	
-328	2 X 25		2.400/60.96	.120/3.05	15u"/.38u MIN (NOTE 16) OVER 50u"/1.27u Ni	
-329	2 X 13		1.200/30.48	.150/3.81	15u"/.38u MIN (NOTE 16) OVER 50u"/1.27u Ni	
-330	2 X 25		2.400/60.96		15u"/.38u MIN (NOTE 16) OVER 50u"/1.27u Ni	
-331	2 X 30		2.900/73.66		15u"/.38u MIN (NOTE 16) OVER 50u"/1.27u Ni	
-332	2 X 17		1.600/40.64		15u"/.38u MIN (NOTE 16) OVER 50u"/1.27u Ni	
-333	2 X 20		1.900/48.26	.150/3.81	30u"/0.76u MIN (NOTE 16) OVER 50u"/1.27u Ni	
-334	2 X 10		.900/22.86	.105/2.67	15u"/.38u MIN (NOTE 16) OVER 50u"/1.27u Ni	
-335	2 X 20		1.900/48.26	.105/2.67	30u"/0.76u MIN (NOTE 16) OVER 50u"/1.27u Ni	
-336	2 X 22		2.100/53.34	.105/2.67	30u"/0.76u MIN (NOTE 16) OVER 50u"/1.27u Ni	
-337	2 X 12	D	1.100/27.94	.150/3.81	15u"/.38u MIN (NOTE 16) OVER 50u"/1.27u Ni	
-338	2 X 5	B	.400/10.16	.150/3.81	15u"/.38u MIN (NOTE 16) OVER 50u"/1.27u Ni	
-339	2 X 4	B	.300/7.62	.105/2.67	15u"/.38u MIN (NOTE 16) OVER 50u"/1.27u Ni	
66506-340	2 X 10	D	.900/22.86	.150/3.81	30u"/0.76u MIN (NOTE 16) OVER 50u"/1.27u Ni	NOTE 2

mat'l. code		surface ISO 1302 ✓		tolerance ISO 406 ISO 1101		projection 		product family QUICKIE	
ltr ecn nodr date		tolerances unless otherwise specified		linear XXX.X/XXX.X XXX.X/XXX.X XXX.X/XXX.X		INCH/MM		title HEADER QUICKIE SLIM LINE VERTICAL 4 WALL	
AK		±2"		linear		scale 1:1		dwg no 66506	
dir L. SANDERS		1/25/95		engr M. SMYK		1/25/95		shee 9 of 10 size A3	
chr J. ROMBERGER		1/25/95		appd M. SMYK		1/25/95		type Product Customer Drawing	
sheet index		revision sheet							

1

2 3

4

5

6

PRODUCT NUMBER NOTE 8, 9 & 12	SIZE	STYLE	DIM C	DIM J	PIN PLATING (NOTE 16)	PLASTIC MATERIAL
66506-341	2 X 17	D	1.600/40.64	.150/3.81	30u"/.76u MIN (NOTE 16) OVER 50u"/1.27u Ni	NOTE 2
-342	2 X 10	D	.900/22.86	.150/3.81	15u"/.38u MIN (NOTE 16) OVER 50u"/1.27u Ni	NOTE 2
-343	2 X 17	D	1.600/40.64	.150/3.81	15u"/.38u MIN (NOTE 16) OVER 50u"/1.27u Ni	NOTE 2
-344	U N A S S I G N E D					
-345	2 X 20	D	1.900/48.26	.120/3.05	15u"/.38u MIN (NOTE 16) OVER 50u"/1.27u Ni	NOTE 2
-346	U N A S S I G N E D					
-347	U N A S S I G N E D					
-348	2 X 5	B	.400/10.16	.105/2.67	15u/.38u MIN (NOTE 16) OVER 50u"/1.27u Ni	NOTE 2
-349	2 X 7	C	.600/15.24			
-350	2 X 8	D	.700/17.78			
-351	2 X 10		.900/22.86			
-352	2 X 13		1.200/30.48			
-353	2 X 17		1.600/40.64			
-354	2 X 20		1.900/48.26			
-355	2 X 22		2.100/53.34			
-356	2 X 25		2.400/60.96			
-357	2 X 30		2.900/73.66	.105/2.67	15u/.38u MIN (NOTE 16) OVER 50u"/1.27u Ni	
-358	2 X 10		.900/22.86	.150/3.81	30u"/.76u MIN (NOTE 16) OVER 50u"/1.27u Ni	
-359	2 X 17		1.600/40.64	.150/3.81	30u"/.76u MIN (NOTE 16) OVER 50u"/1.27u Ni	
-360	2 X 12	D	1.100/27.94	.295/7.49	15u/.38u MIN (NOTE 16) OVER 50u"/1.27u Ni	
-361	2 X 5	B	.400/10.16	.105/2.67	15u/.38u MIN (NOTE 16) OVER 50u"/1.27u Ni	
-362	2 X 5	B	.400/10.16	.105/2.67	30u/.76u MIN (NOTE 16) OVER 50u"/1.27u Ni	
-363	2 X 8	D	.700/17.78	.105/2.67		
-364	2 X 10	D	.900/22.86	.105/2.67		
-365	2 X 15	D	1.400/35.56	.105/2.67		
-366	2 X 17	D	1.600/40.64	.105/2.67		
-367	2 X 5	B	.400/10.16	.150/3.81		
-368	2 X 17	D	1.600/40.64	.150/3.81		
66506-369	2 X 25	D	2.400/60.96	.150/3.81	30u/.76u MIN (NOTE 16) OVER 50u"/1.27u Ni	NOTE 2

NOTE 11
NOTE 11

mat'l. code		surface ISO 1302 ✓		tolerance ISO 406 ISO 1101		projection ⊕		product family QUICKIE	
l'tecn n'dr date		tolerances unless otherwise specified		linear		INCH/MM		title	
AK		angles		±2"		scale 1:1		HEADER QUICKIE SLIM LINE VERTICAL 4 WALL	
		dr		L. SANDERS		1/25/95		dwg no	
		engr		M. SMYK		1/25/95		sheet 10 of 10	
		chr		J. ROMBERGER		1/25/95		size A3	
		appd		M. SMYK		1/25/95		type Product Customer Drawing	
sheet index		revision sheet							