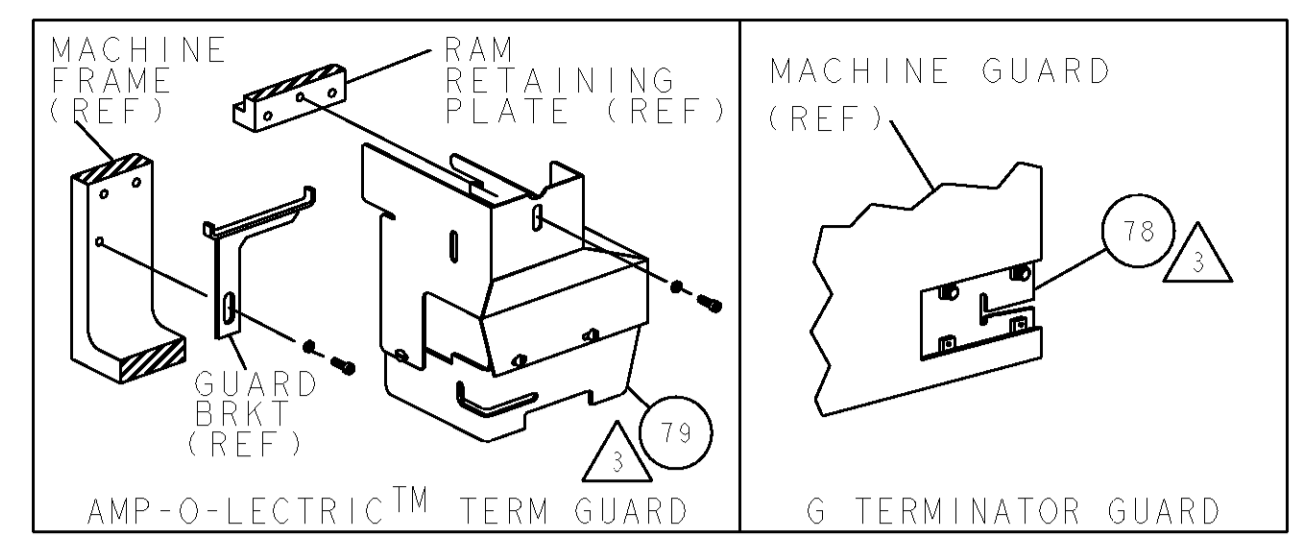


THIS DRAWING IS UNPUBLISHED.		RELEASED FOR PUBLICATION		
COPYRIGHT 20 BY TYCO ELECTRONICS CORPORATION. ALL RIGHTS RESERVED.				
PART NUMBER	REV	FIRST USED	POWER UNIT	FEED TYPE
1855364-1	A	122500-1	LEADMAKER & BENCH MODEL G	AIR FEED
1855364-2	A	565435-5	BENCH MODEL K	AIR FEED
7-1855364-7	A	-	SPARE PARTS	-

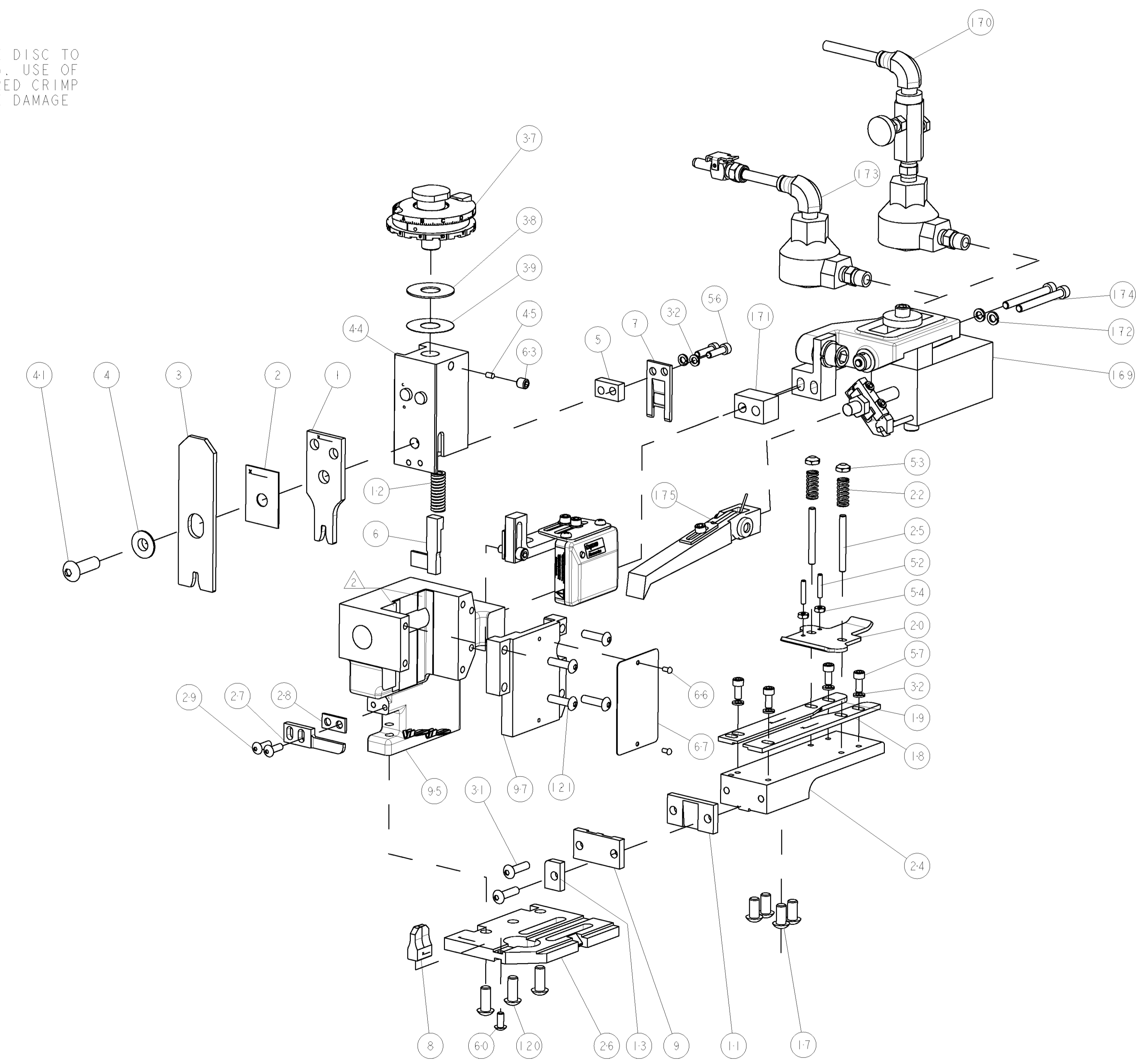
- △ RECOMMENDED SPARE PARTS
- △ GREASE LIGHTLY
- △ GUARD MUST BE IN PLACE WHEN OPERATING APPLICATOR IN A BENCH MACHINE

**\*WARNING:**  
 ON INSTALLATION, SET WIRE DISC TO LARGEST WIRE SIZE SETTING. USE OF SETTINGS BELOW MIN REQUIRED CRIMP HEIGHT SETTING WILL CAUSE DAMAGE TO CRIMP TOOLING.



TERMINAL NAME: TERMINAL, EYELET - STRAIGHT					
TE PN	-	TE TERMINAL - TE CRIMP SPECS			
1438247	-				
		PAD LTR	CRIMP HEIGHT	WIRE SIZE	REF SETTING*
-	-	A	2.49±0.05mm [.098±.002]	14 AWG	D0
-	-	B	-	-	-
-	-	C	-	-	-
-	-	D	-	-	-
		CRIMP	SIZE	TYPE	RANGE
-	-	-	.124 [3.15mm]	F	14 AWG
-	-	WIRE	-	-	-
-	-	INSUL	.160 [4.06mm]	F	∅.120 MAX
WIRE STRIP LENGTH	TERM APPL SPEC	FEED	APPL INSTRUCTIONS	SET UP GAGE	
.185 - .200	NONE	.910	1408-8490	458638-1	

LOC	DIST	REVISIONS				
A	66	P LTR	DESCRIPTION	DATE	DWN	APVD
		I	PRELIMINARY	24JAN2008	MEH	GB
		A	RELEASED	12FEB2008	MEH	TE



-	1	1	-	460680-2	FEED FINGER ASSEMBLY	175
-	2	2	-	4-21000-2	SCR, SKT HD CAP 10-32 X 1.750	174
-	-	1	-	692655-7	AIR FEED VALVE ASSEMBLY	173
-	2	2	-	21024-5	WASHER, SPRG LOCK, REG NO 10	172
-	1	1	-	461690-3	SPACER, AIR FEED	171
-	1	-	-	692655-5	AIR FEED VALVE ASSEMBLY	170
-	1	1	-	460277-1	AIR FEED ASSY	169
-	4	4	-	2-21002-9	SCR, BTN SKT HD CAP 10-32 X .750	121
-	3	3	-	2-22733-8	SCR, BHSC, SELF-LOCKING, 1/4-20 X .625	120
-	1	1	-	454220-1	CAP, RAM	97
-	1	1	-	453736-1	HOUSING, APPLICATOR	95
-	REF	-	-	455745-1	GUARD WINDOW	79
-	-	REF	-	679532-1	INSERT, GUARD	78
-	1	1	-	217238-1	GENERAL INSTRUCTION PKG	72
-	1	1	-	4088039	EF APPL INST 408-8039	71
-	1	1	-	461264-5	PLATE, IDENTIFICATION	67
-	2	2	-	21017-2	SCREW, DRIVE	66
-	1	1	-	21009-2	SCR, SET, SELF LOCKING 1/4-20 X .250	63
-	1	1	-	22733-8	SCR, BHSC, SELF-LOCKING, 8-32 X .375	60
-	4	4	-	2-21000-6	SCR, SKT HD CAP 8-32 X .375	57
-	2	2	-	2-21000-8	SCR, SKT HD CAP 8-32 X .625	56
-	2	2	-	21018-4	NUT, HEX, REG 4-40	54
-	2	2	-	21022-2	NUT, LOCK, HEX, TORQUE, 8-32	53
-	2	2	-	2-21006-6	SCR, SET, CUP POINT 4-40 X .625	52
-	1	1	-	690191-1	PLUG, NYLON	45
-	1	1	-	1-455674-3	RAM	44
-	1	1	-	7-21002-9	SCR, BTN SKT HD CAP 5/16-24 X 1.00	41
-	1	1	-	690125-1	SHIM SUB-ASSY	39
-	1	1	-	469367-7	SHIM	38
-	1	1	-	879103-2	FINE ADJUST HEAD SUBASSY	37
-	6	6	-	21024-4	WASHER, SPRG LOCK, REG NO 8	32
-	2	2	-	2-21002-9	SCR, BTN SKT HD CAP 10-32 X .750	31
-	2	2	-	2-21002-2	SCR, BTN SKT HD CAP 8-32 X .500	29
-	1	1	-	1-690451-4	SPACER, STRIPPER	28
-	1	1	-	240639-1	STRIPPER (MACHINING)	27
-	1	1	-	455676-1	PLATE, BASE	26
-	2	2	-	22354-8	STUD, THREADED	25
-	1	1	-	455678-2	PLATE, STRIP GUIDE	24
-	2	2	-	4-22281-1	SPRING, DRAG	22
-	1	1	-	454177-1	DRAG	20
-	1	1	-	4-458030-2	STRIP GUIDE, REAR	19
-	1	1	-	4-458031-2	STRIP GUIDE, FRONT	18
-	4	4	-	3-21002-3	SCR, BTN SKT HD CAP 1/4-20 X .500	17
-	1	1	-	690481-2	SPACER, HOLD DOWN	13
-	1	1	-	23846-1	SPRING, DIE	12
-	1	1	-	240644-9	PLATE, REAR SHEAR	11
-	1	1	-	1-690482-6	PLATE, FRONT SHEAR	9
-	1	1	-	2-1633249-3	ANVIL, COMBINATION	8
-	1	1	-	690474-2	BLADE, SLUG	7
-	1	1	-	7-455892-9	HOLD DOWN, TERMINAL	6
-	1	1	-	2-240641-5	SPACER	5
-	1	1	-	238009-1	BLOCK, FL CRIMPER SPACER	4
-	1	1	-	456134-9	CRIMPER, INSULATION F PREMIUM	3
-	1	1	-	455888-6	SPACER, CRIMPER	2
-	1	1	-	1633609-4	CRIMPER, WIRE	1

DIMENSIONS: INCHES		TOLERANCES UNLESS OTHERWISE SPECIFIED:		DWN: HERR 24JAN2008		Tyco Electronics Tyco Electronics Harrisburg, PA 17105-3608	
9 PLC ±.01		1 PLC ±.01		CHK: G. BAILEY 34JAN2008		NAME: END FEED HDM APPLICATOR	
3 PLC ±.001		4 PLC ±.0001		APVD: N. DEMING 24JAN2008		PRODUCT SPEC: -	
ANGLES ±.0001		FINISH: -		APPL SPEC: -		APPLICATION SPEC: -	
MATERIAL: -		FINISH: -		WEIGHT: -		SIZE: A1 00779 C=1855364	
CUSTOMER DRAWING		SCALE: 3:5		SHEET: 1 OF 1		REV: A	

# Mouser Electronics

Authorized Distributor

Click to View Pricing, Inventory, Delivery & Lifecycle Information:

[TE Connectivity:](#)

[1855364-2](#)