

Features and Benefits

- Fully shielded connector
- Advanced EMI/RFI protection
- ISDN standard
- Industry standard footprint and height
- Automatic vacuum placement

Reference Information

Product Specification: PS-95122
Packaging: Anti-static blister reel
Mates With: FCC 68 plugs
Designed In: Millimeters

Electrical

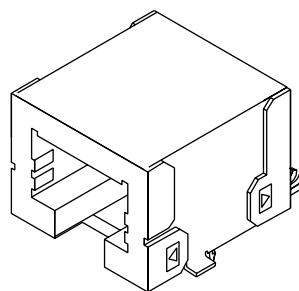
Voltage: 125V
 Current: 1.5A
 Contact Resistance: 20mΩ max.
 Dielectric Withstanding Voltage: 1000V
 Insulation Resistance: 500 MΩ min.
 Shielding Effectiveness: 20 dB min.

Physical

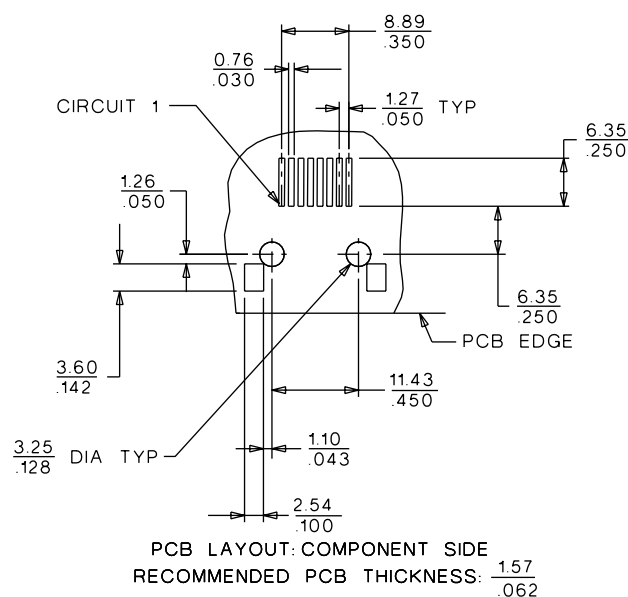
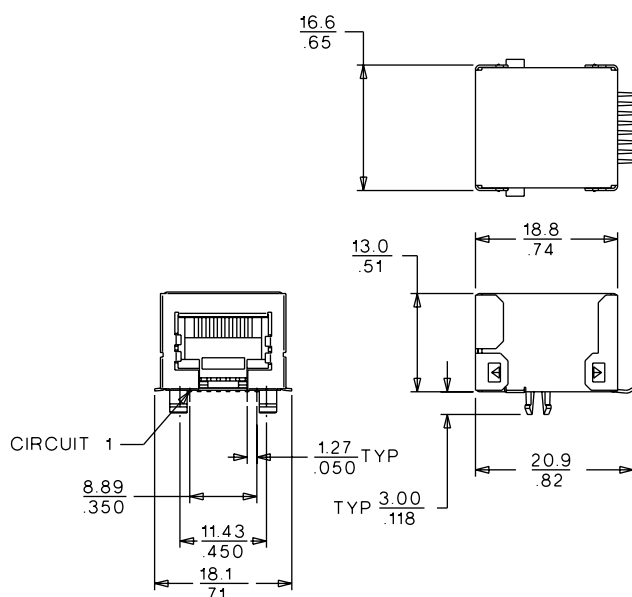
Housing: Black polyamide, UL 94V-0
Contact: Phosphor Bronze
Plating: Post plate 1.27 to 1.52µm (50 to 60µ") Gold in
contact area, 1.90µm (75µ") min. (90/10) Tin/Lead
in tail area both over Nickel overall
Operating Temperature: -40 to +80°C

95122

SMT, Right Angle Standard Profile, Shielded



CATALOG DRAWING (FOR REFERENCE ONLY)



ORDERING INFORMATION

Circuits	Loaded Contacts	Order No.	Panel Ground	Fixing Pegs
8	8	95122-6881	No	Yes
8	8	95122-6882	Yes	Yes
8	8	95122-6883	No	No
8	8	95122-6884	Yes	No