

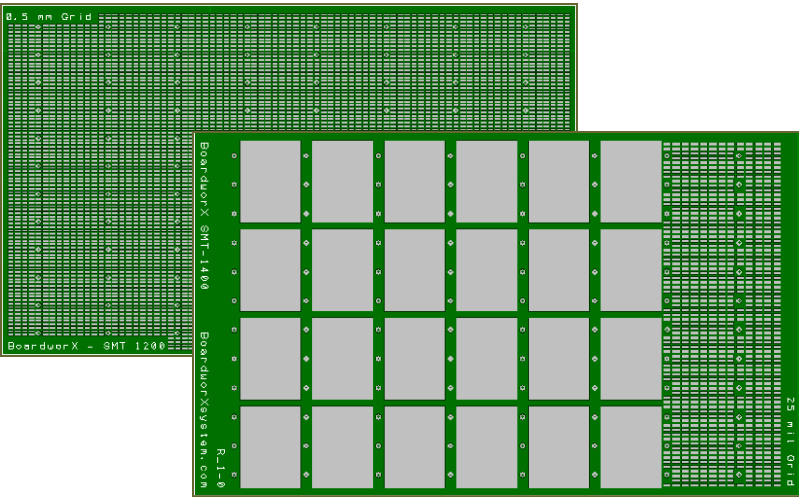
Information

Features:

- Convenient size for larger or smaller circuit development
- Fine pitches accommodated down to 0.5 mm
- Integrated power plane structures ease placement and wiring
- Allows entire design to be done in surface mount on one board independent of package types
- No need for adaptor boards from surface mount to through hole
- Power component accommodation on bottom side of board
- Prototype area on bottom of board
- Solder Mask for easier wiring.

Item Number:
SMT-1200

SMT-1200 Plane Board



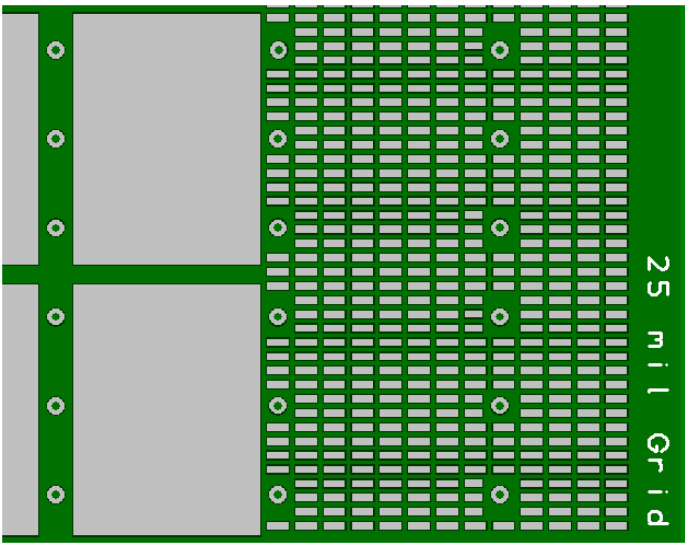
Description:

Description:

The SMT-1200 board expands on the traditional SMT-200 board with several new features. It is supplied with a solder mask that provides easier wiring and placement of components and is now available in lead free or leaded solder compatible finish. In addition, pads have been modified on the back side of the board to provide easier connections and a prototyping area is now included for more convenient development so the large pads can be accessed from circuitry on the same side. In addition the board has been made larger to accommodate more flexibility and usefulness.

All of the original features of the SMT-200 board apply of course as well as the standard benefits of using the BoardworX system .

Close Up sample of board



Summary and Specs

Product Summary:

The SMT-1200 is an Surface Mount Prototyping board designed for general surface mount prototyping. It features a separated plane structure on the bottom side to ease wiring for prototype circuits.

Specifications:

Dimensions:

3.3" X 2"

Grid Top:

0.5 mm

Grid Bottom:

28 power plane pads with Connecting holes

Material:

FR-4

Finish:

Lead Free Solder/Solder Mask

Pad Shape:

Rectangular

Certification:

IPC Class 2